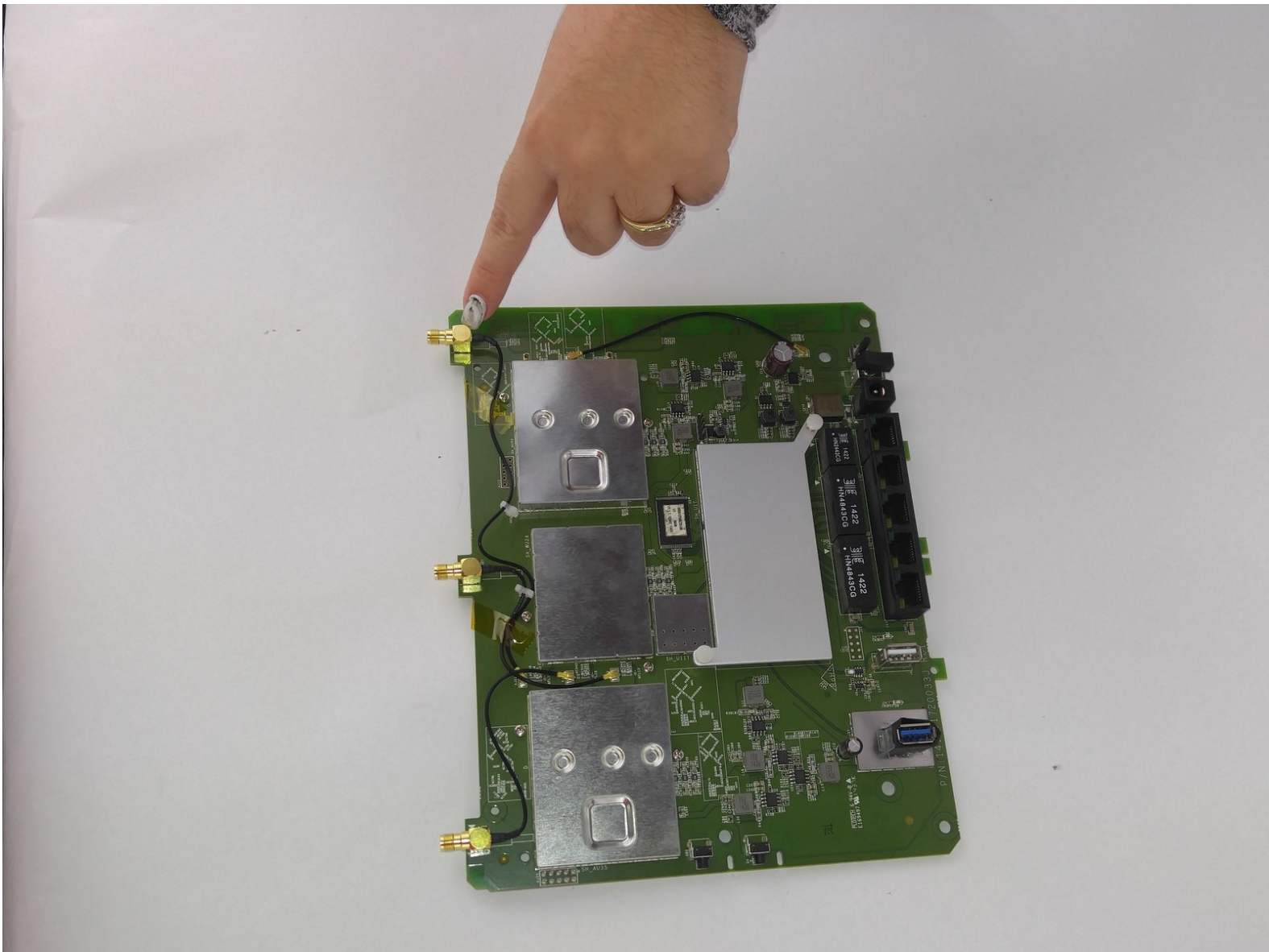




# Linksys EA9200 Antenna Port Replacement

With this guide you will be able to remove and replace any damaged antenna port to the Linksys EA9200

Written By: Shane Davis



---

## INTRODUCTION

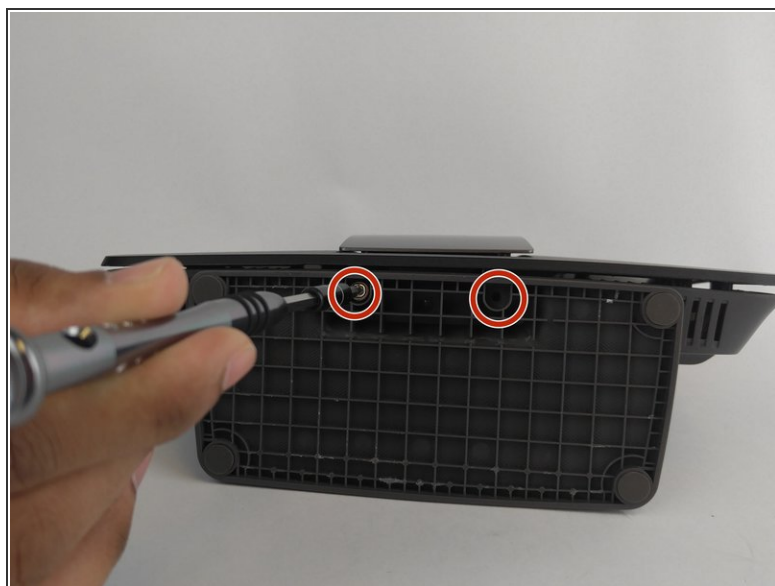
In the following guide you will be taking apart the outer casing to the Linksys EA9200, and desoldering the Antenna port from the circuit board. To complete this Antenna port removal you will need to have several tools as well as some practice desoldering. Both the tools needed as well as the steps to practicing desoldering are included in the guide.



### TOOLS:

- [Spudger](#) (1)
  - [Phillips #1 Screwdriver](#) (1)
  - [Soldering Iron](#) (1)
-

## Step 1 — Linksys EA9200 Disassembly



- Remove the sticker on the bottom.
- Remove the two screws holding the bottom plate in place. Use Phillips screwdriver tip #1 , the screw head-size is 5mm.

## Step 2



- Remove the back sticker that has all the labels.
- There are two screws to remove. They are 6mm in diameter, use phillips screw tip #1.

## Step 3




- Depress the 12 clips along the edge into the router. Use the nylon spudger as using a metal object could cause damage.



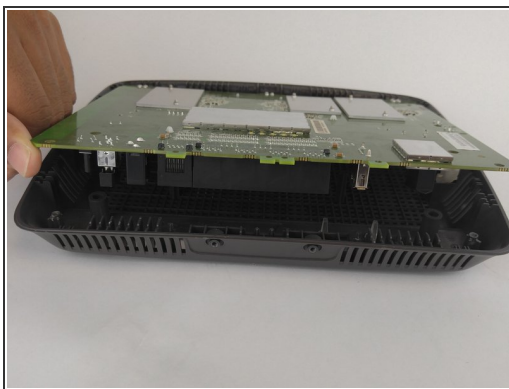
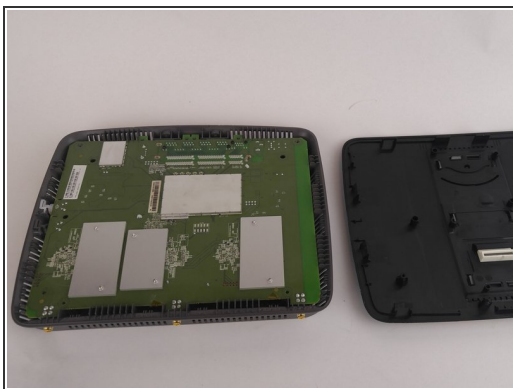
## Step 4



- Once you have one side open, keep a spudger wedged between both sides. This will help keep it open in case it tries to snap back together.

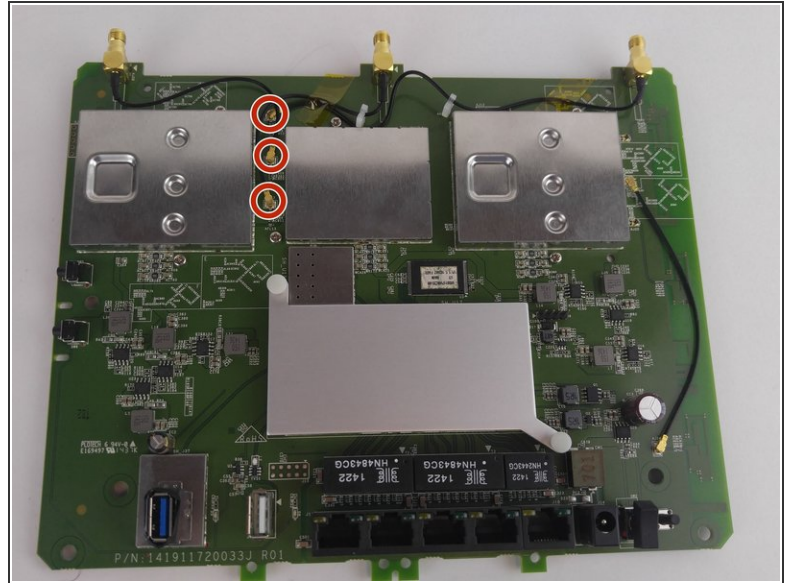
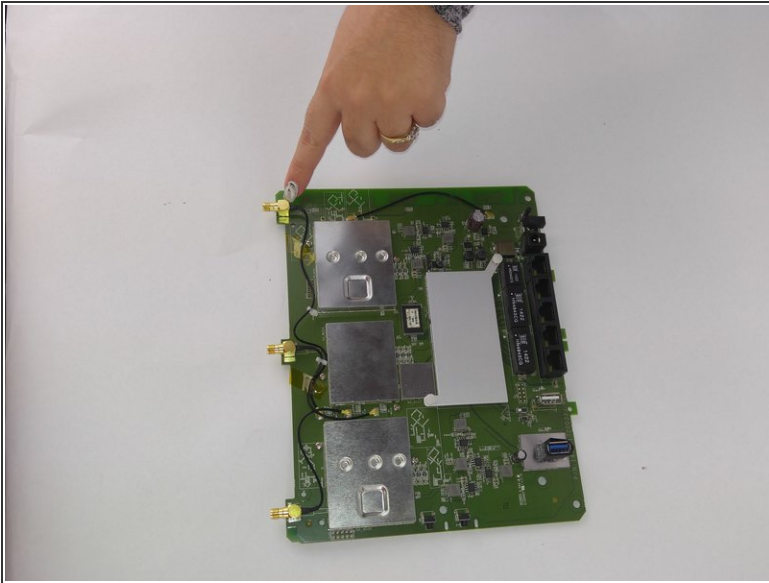
 These clips are tough and may need some additional force.

## Step 5



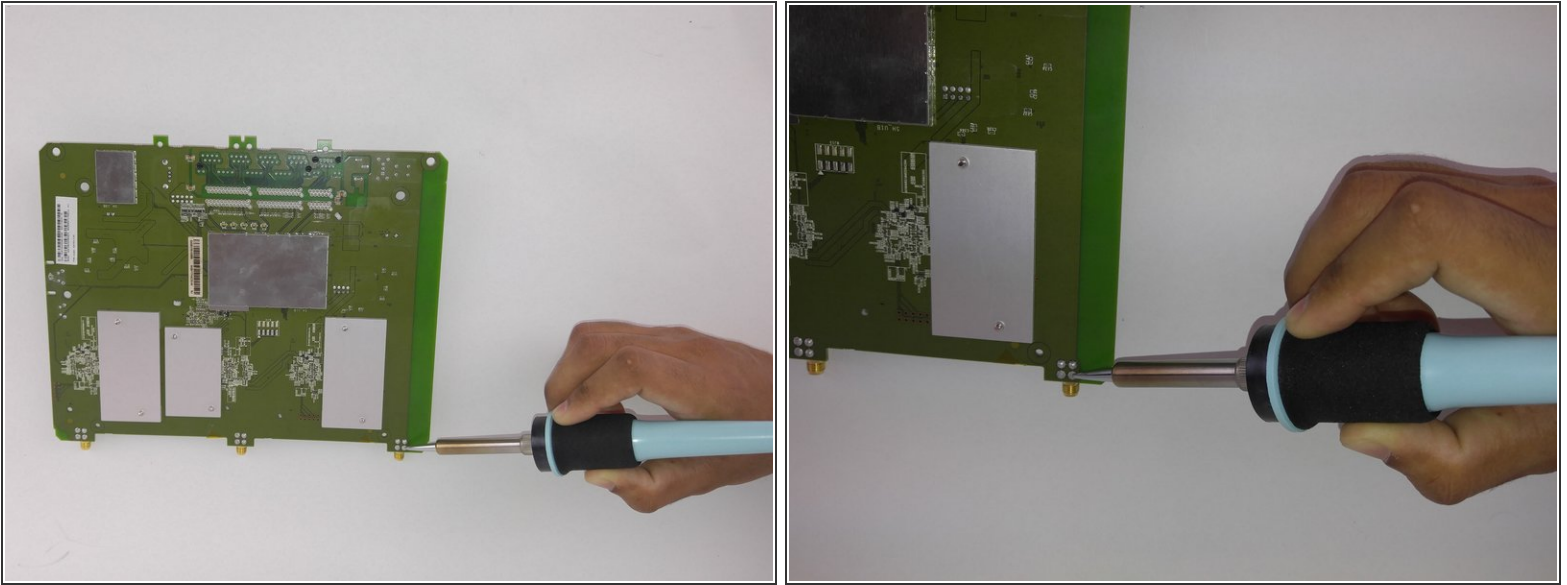
- Lift the board and pull down, away from the antennas.

## Step 6 — Antenna Port




- The antenna ports are connected to the board with a wire that has a "snap" connector.

## Step 7

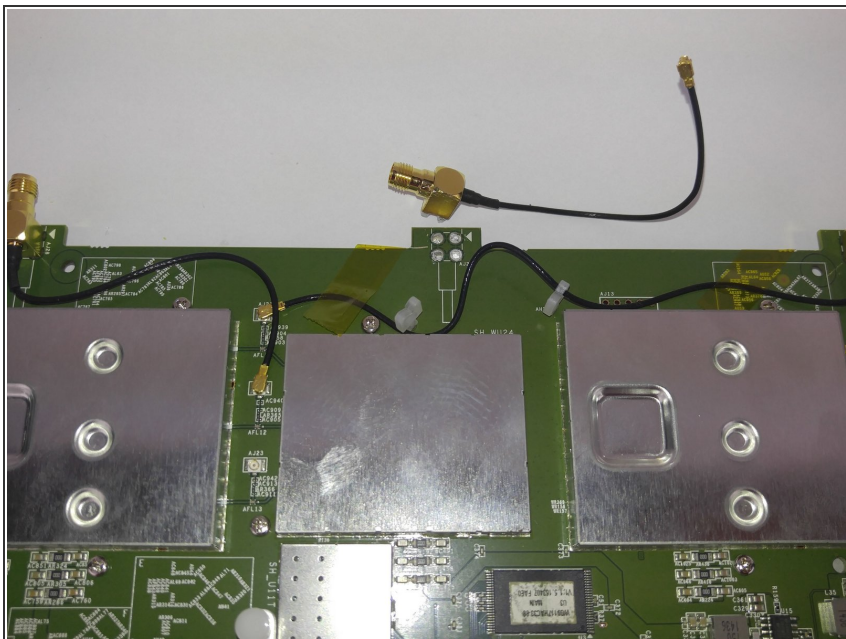


- Desolder the four pins of the antenna port.

 Do not place the soldering iron on the wrong terminals as this can cause the device to no longer to function.

- ① [How To Solder and Desolder Connections](#) is iFixit's official guide on how to use a soldering iron
- ① You will need a soldering iron that is capable of reaching temperatures greater than 300 degrees Fahrenheit.
- ① Temperature of the component will be very hot when desoldered, take precaution when handling.

## Step 8



- Once the solder is melted, quickly pull broken antenna port.

⚠ Temperature of the component will be very hot when desoldered, take precaution when handling.

To reassemble your device, follow these instructions in reverse order.