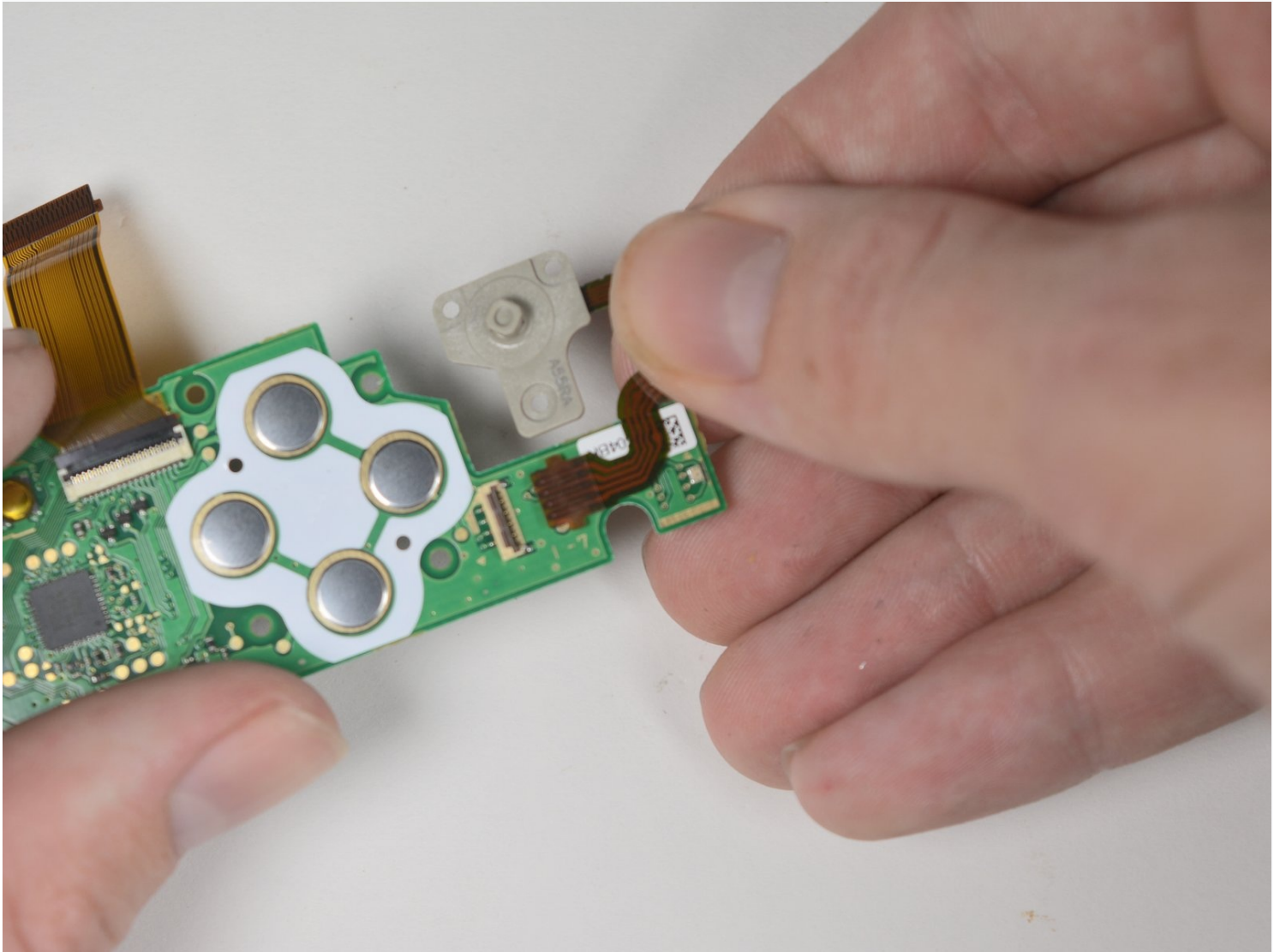




Nintendo 3DS 2015 C-Stick Replacement

If your C-Stick doesn't work, you may need to...

Written By: Tyler Starr



INTRODUCTION

If your C-Stick doesn't work, you may need to replace it. Watch out for delicate ribbon cables in the device. After removing the board with the C-Stick attached, the face buttons can fall out. Make sure to not lose them.

TOOLS:

[Phillips #0 Screwdriver](#) (1)

[iFixit Opening Tool](#) (1)

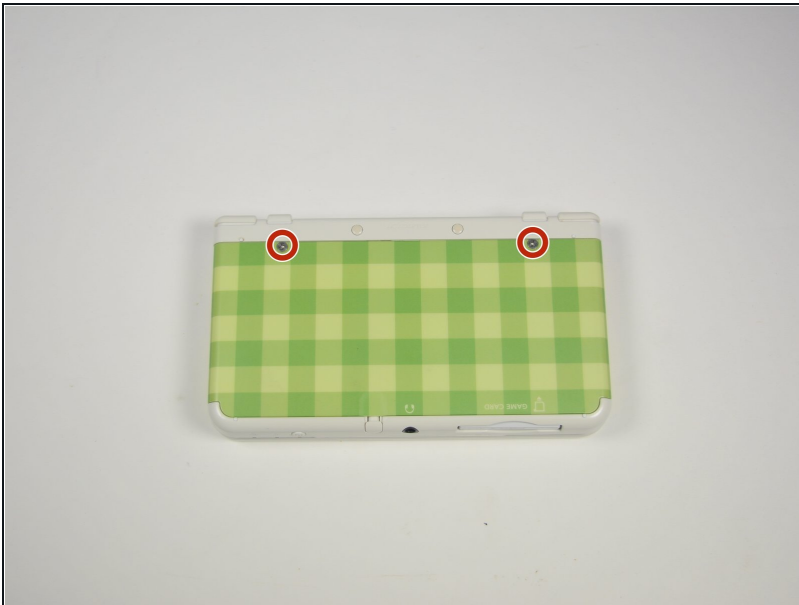
[Tri-point Y0 Screwdriver](#) (1)

[Phillips #00 Screwdriver](#) (1)


[Tweezers](#) (1)

[Spudger](#) (1)

Step 1 — Battery

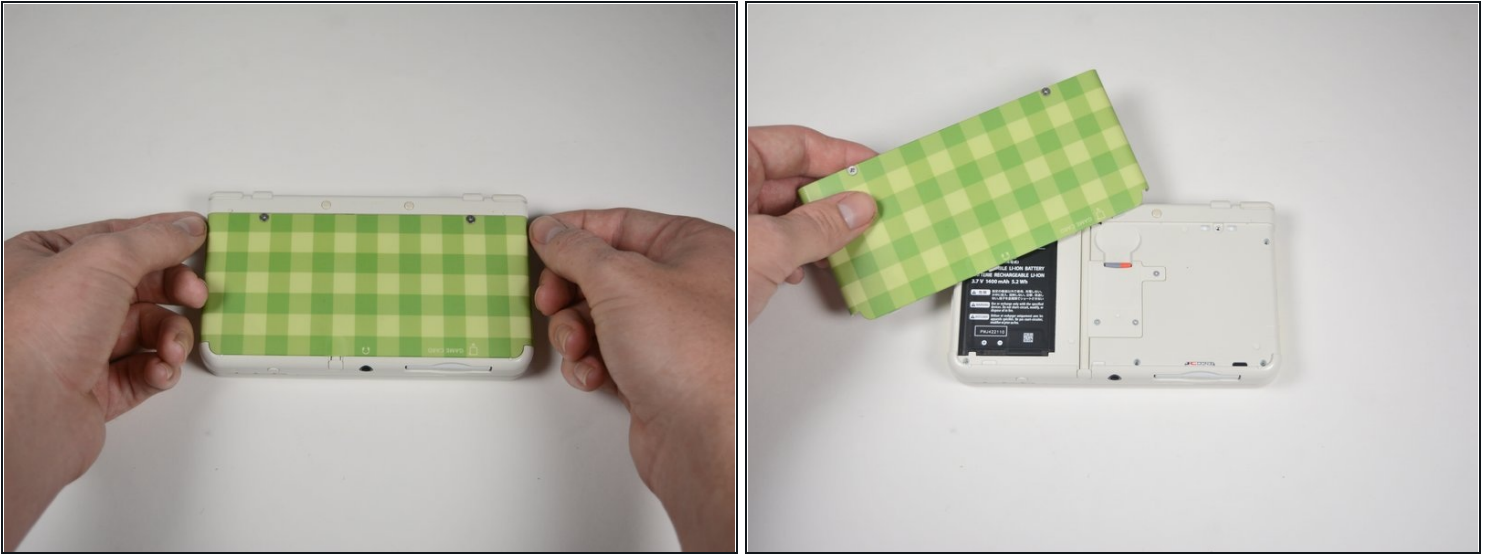


- Unscrew the two 3mm Phillips #0 head screws along the top edge of the device.

 The screws on the back panel strip easily. Go slowly and press down firmly.

- ① The screws on the back panel are held in by locking washers, so they won't come out of the back panel.

Step 2



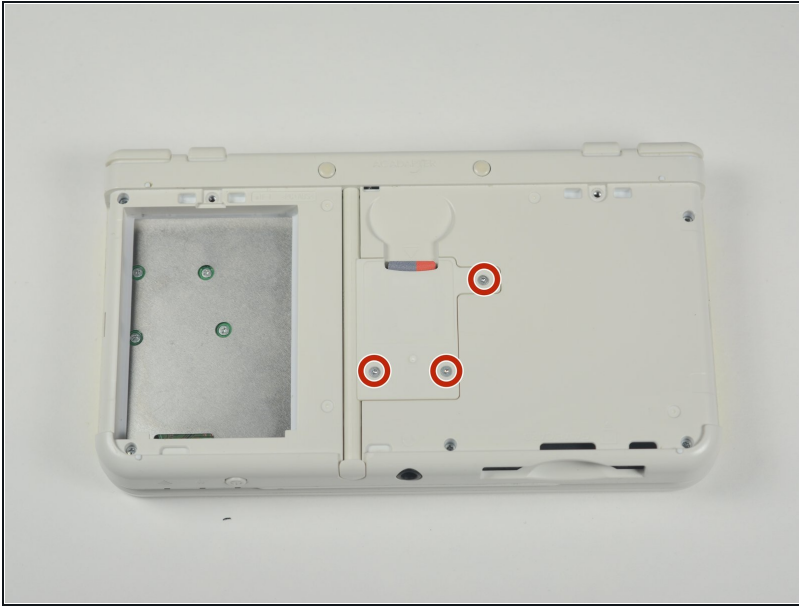
- Pull the top corner tabs of the front face plate outward and towards you.
- Pull the faceplate up and out of the slots at the bottom of the device.
- Set aside the back faceplate.

Step 3



- Insert a plastic opening tool into the notch at the top of the battery.
- Pry the battery up with the plastic opening tool.

Step 4 — SD Card Reader



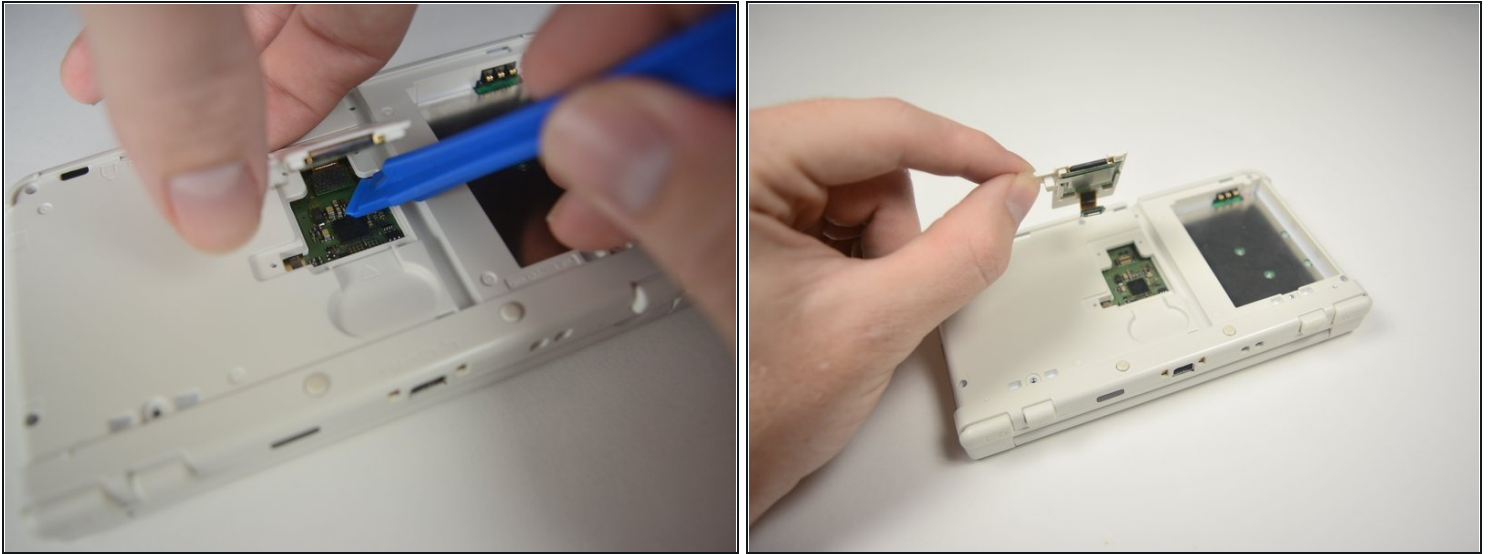
- Unscrew the three 3mm Y0 screws along the right and bottom of the SD card reader.
- ⓘ The bottom of the SD card reader should slightly pop out after removing the screws.

Step 5



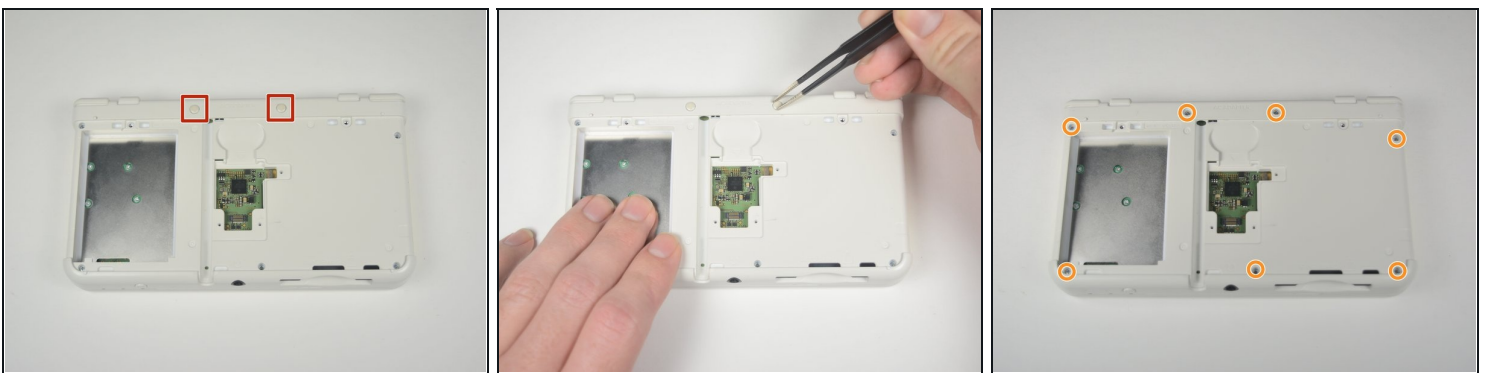
- Pull the SD card reader from the edge with two holes gently to free the tab at the top of the SD card reader.
- ⚠ Don't completely pull the SD card out of the device yet. There is a ribbon cable connected under the SD card reader.
- Reorient the device so that the power jack faces you.

Step 6



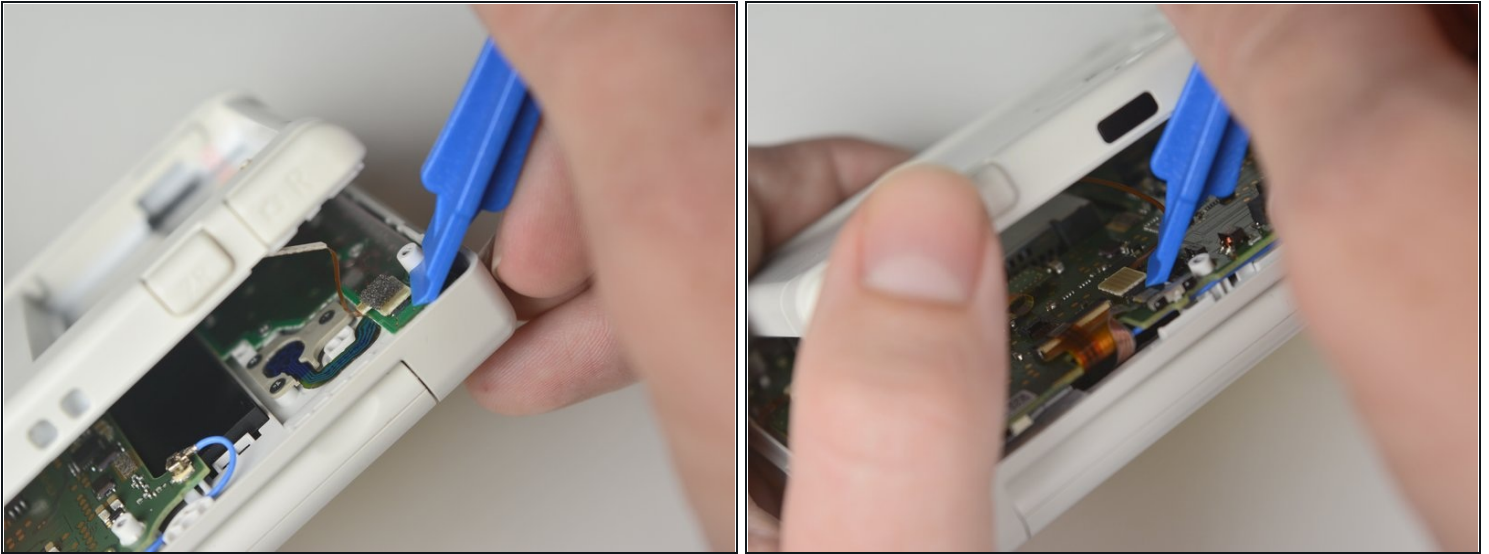
- Lift the SD card reader gently.
- Use a plastic opening tool to pry the SD card ribbon cable off the socket on the motherboard.
- Lift the SD card reader out off of the lower casing.

Step 7 — Lower Case



- Reorient the device so that the game slot now faces you.
- Remove the two rubber bumpers along the top of the device using [tweezers](#).
- Unscrew the seven 6mm Phillips #00 screws along the top and bottom of the 3DS.

Step 8

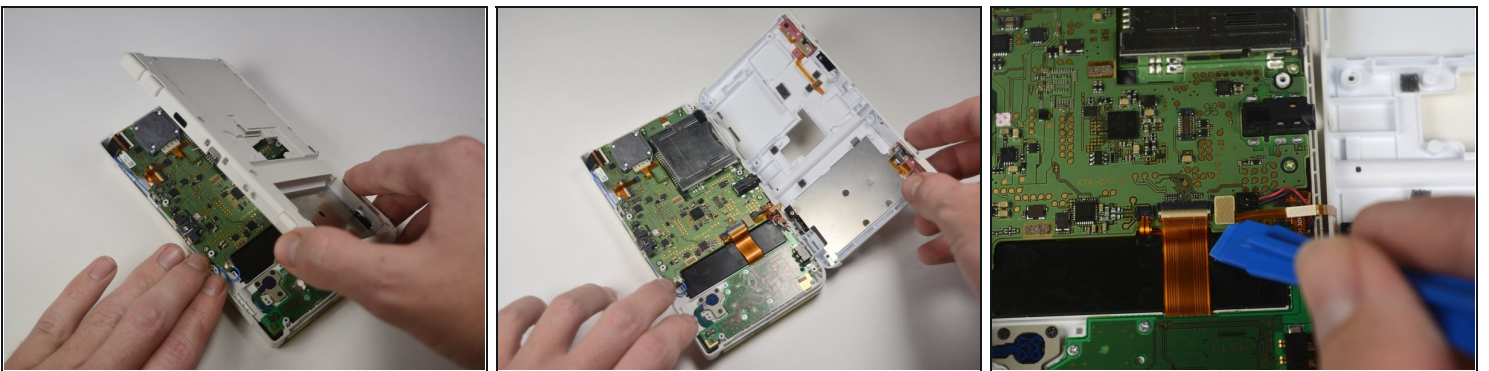


- Lift the top edge of the lower case slightly off on the 3DS.

⚠ Don't pull the lower casing completely off, you may break those connections. There are ribbon cables that must be disconnected first.

- Pry the ribbon cable socket under the right trigger using a plastic opening tool.
- Pry the ribbon cable socket under the infrared receiver cover using a plastic opening tool.

Step 9



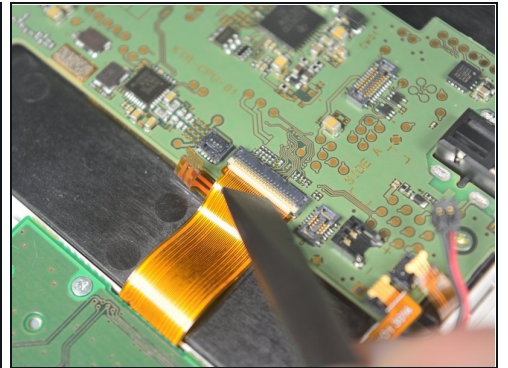
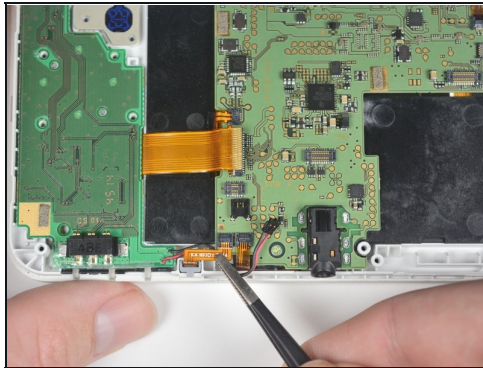
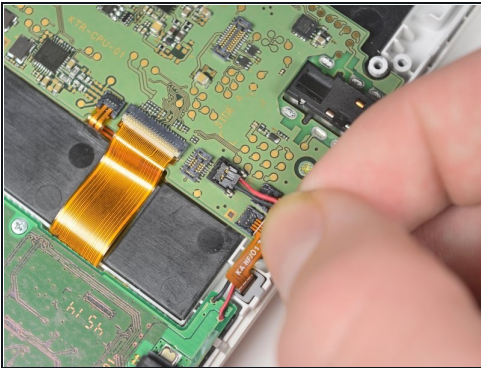
- Open the device slowly from its top edge. Be careful not to tug the ribbon cable connected near the bottom edge of the device.
- Pry the last ribbon cable attached to the lower case using a plastic opening tool.

Step 10 — C-Stick



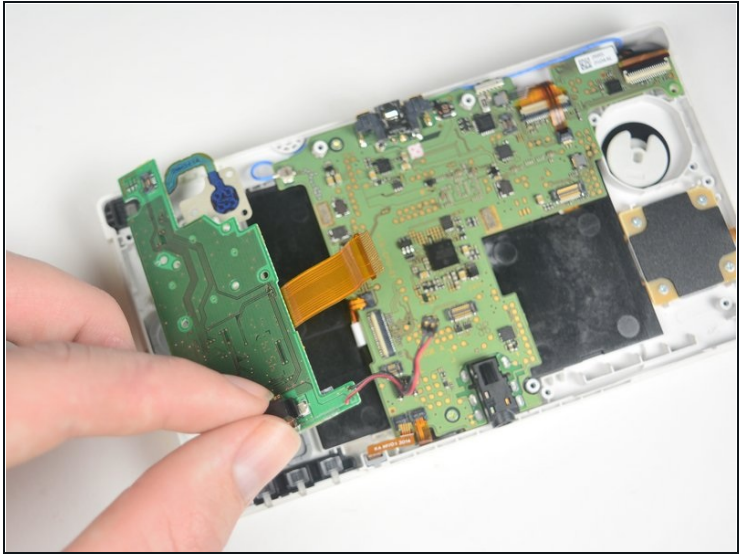
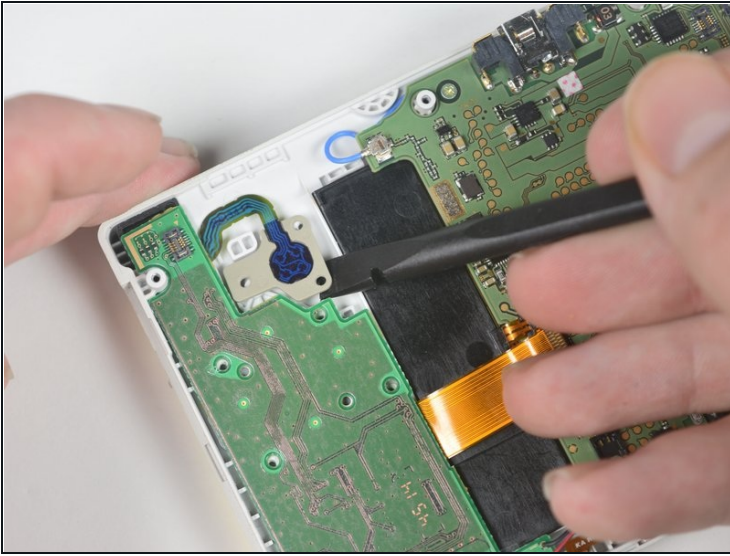
- Remove the four 3mm Phillips #00 screws.
- Remove the three 3mm Phillips #00 screws.

Step 11



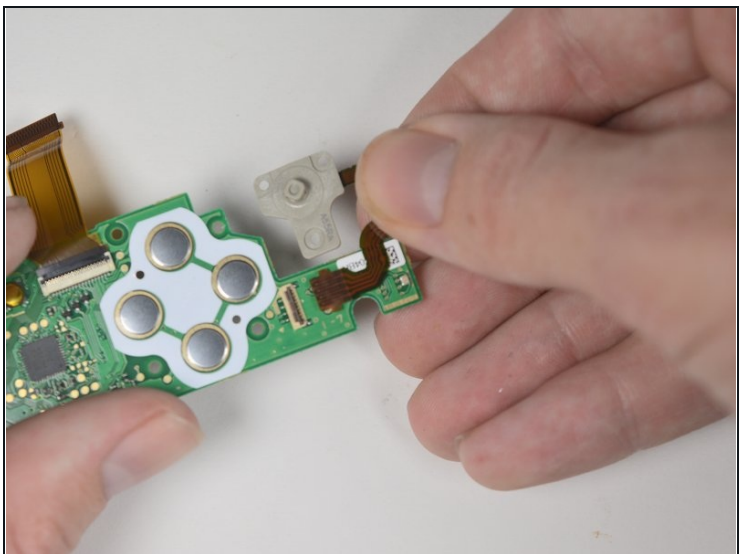
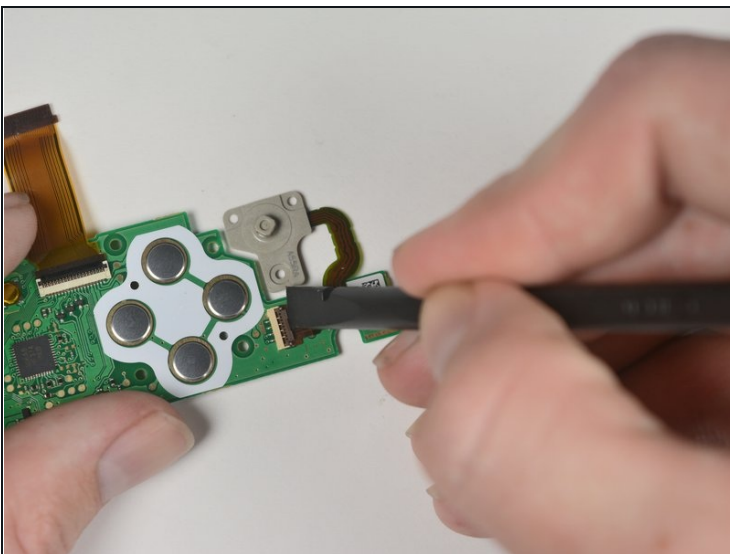
- Pull up gently on power cable to loose it from the motherboard.
- Pull the ribbon cable, connected to the mic, gently towards you with a pair of [tweezers](#).
- Lift the tab to free the large ribbon cable on just above the power connector.

Step 12



- Pry the C-Stick from its plastic housing with the flat side of a spudger.
- Lift the assembly gently out of the device from the battery connector at the bottom of the leftmost circuit board.

Step 13



- Flip the board over to reveal the connector for the C-stick's ribbon cable.
- Lift the tab on the ZIF connector securing the C-Stick to the board.
- Separate the C-Stick from the board.

To reassemble your device, follow these instructions in reverse order.