



Monster SoundStage S1 Mini Disassembly

“Prerequisite Only”

Written By: Sarah Garcia





TOOLS:

- [T10 Torx Security Bit Screwdriver](#) (1)
- [Slip Joint Pliers](#) (1)
- [T6 Torx Screwdriver](#) (1)

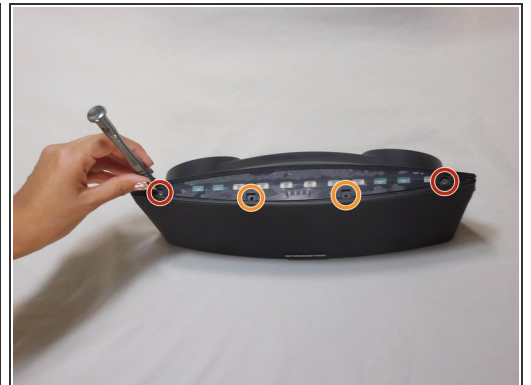
Step 1 — Monster SoundStage S1 Mini Disassembly



⚠ Unplug and power off the speaker.

- Lay the device on its back and unpeel the silicone base.
- Unscrew the four 5mm Torx Security #10 at base.

Step 2



- Return the device rightside up and unpeel the black display cover over the sensor board.
 - Unscrew the two 3mm Torx Security #6 screws on the edge of the device.
 - Unscrew the two 5mm Torx Security #10 in the middle of the device.
- 🔧 Do not worry, the display board *will* re-stick when reassembling.

Step 3



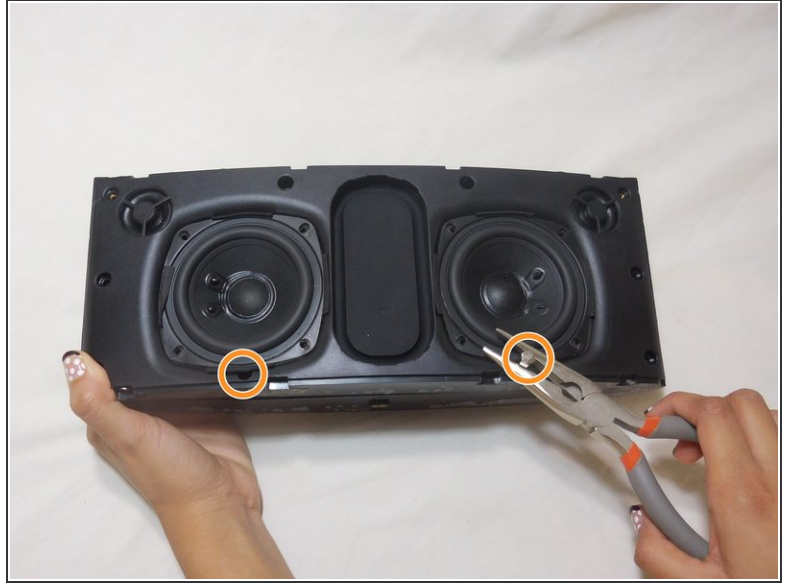
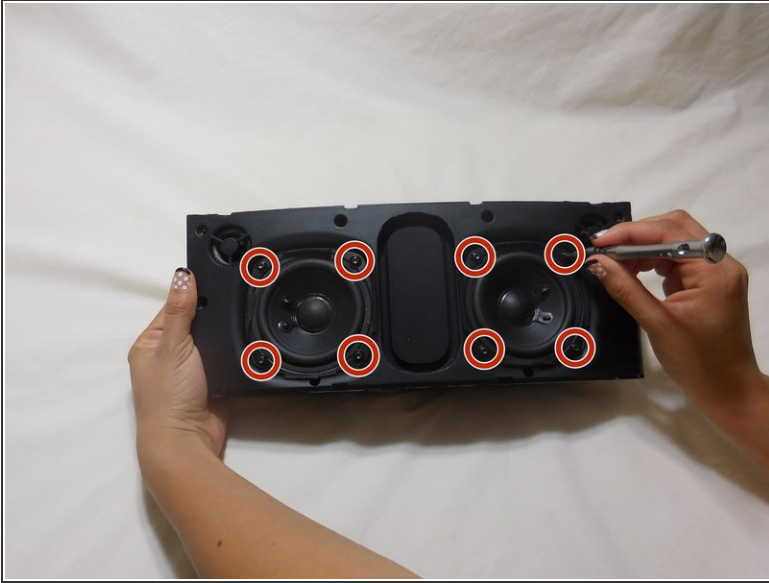
- Remove the metal screen.

Step 4



- Unscrew the two 4mm Torx Security #10 screws on the top edge.
- Unscrew the six 10mm Torx Security #10 screws around the perimeter.

Step 5



- Remove the four 10mm Torx Security #10 screws around each individual speakers.
- Loosen the two Torx Security #10 screws under the speaker using pliers or a long screwdriver.
- ⓘ Screws are hidden and are difficult to get to. Also, these screws remain in place due to the magnetic speakers inside.

Step 6



- Lift the speaker assembly and remove the stuffing.
- ☑ When returning the speaker assembly, make sure the stuffing is tucked in.

To reassemble your device, follow these instructions in reverse order.