



# Samsung Instinct Antenna Replacement

This guide shows how to take out the antenna so that a replacement can be installed.

Written By: Jimmy Kuo



---

## INTRODUCTION

This guide shows how to take out the antenna so that a replacement can be installed.

---



### TOOLS:

- [Phillips #00 Screwdriver](#) (1)
  - [iFixit Opening Tools](#) (1)
-

## Step 1 — Battery



- Apply pressure to the back cover and slide it forward towards the camera.
- Lift the back cover off the phone.

## Step 2



- Holding the phone firmly, use the notches to grip and lift up the battery.

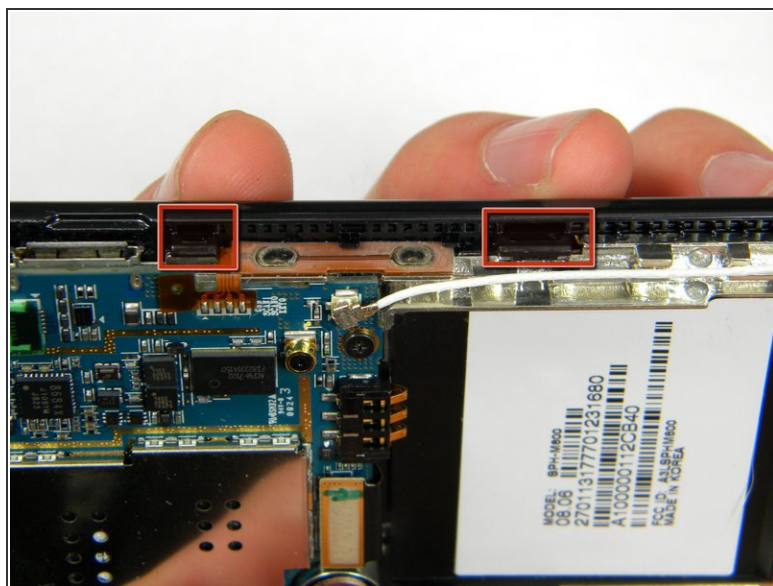


## Step 3 — Back Case



- Remove the four 4.45mm screws at the corners of the phone.

## Step 4



- Use the plastic opening tool to unhook the locks around the edges of the phone.
- ⓘ Do not worry about the inner components of the phone; they are not connected to this case.

## Step 5



- Lift the casing off of the phone.

## Step 6 — Antenna



- With the screws removed, locate the antenna.

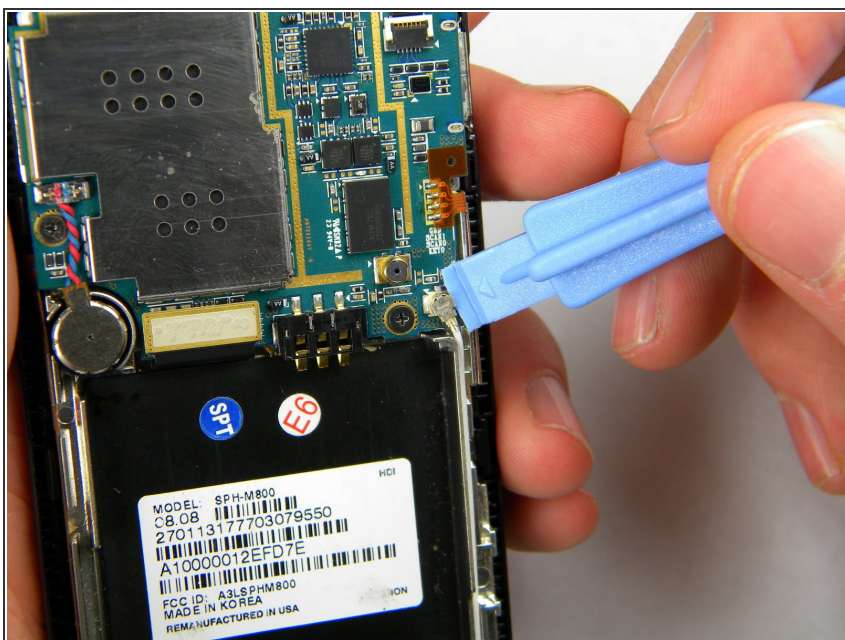


## Step 7



- Using a Phillips head screwdriver, remove the 4.50mm screw holding the antenna in place.

## Step 8



- Using the plastic opener tool, squeeze gently on the antenna cable connector and lift to remove the connector from its position.

## Step 9



- Gently lift up on the antenna and remove it from the back of the device.

To reassemble your device, follow these instructions in reverse order.