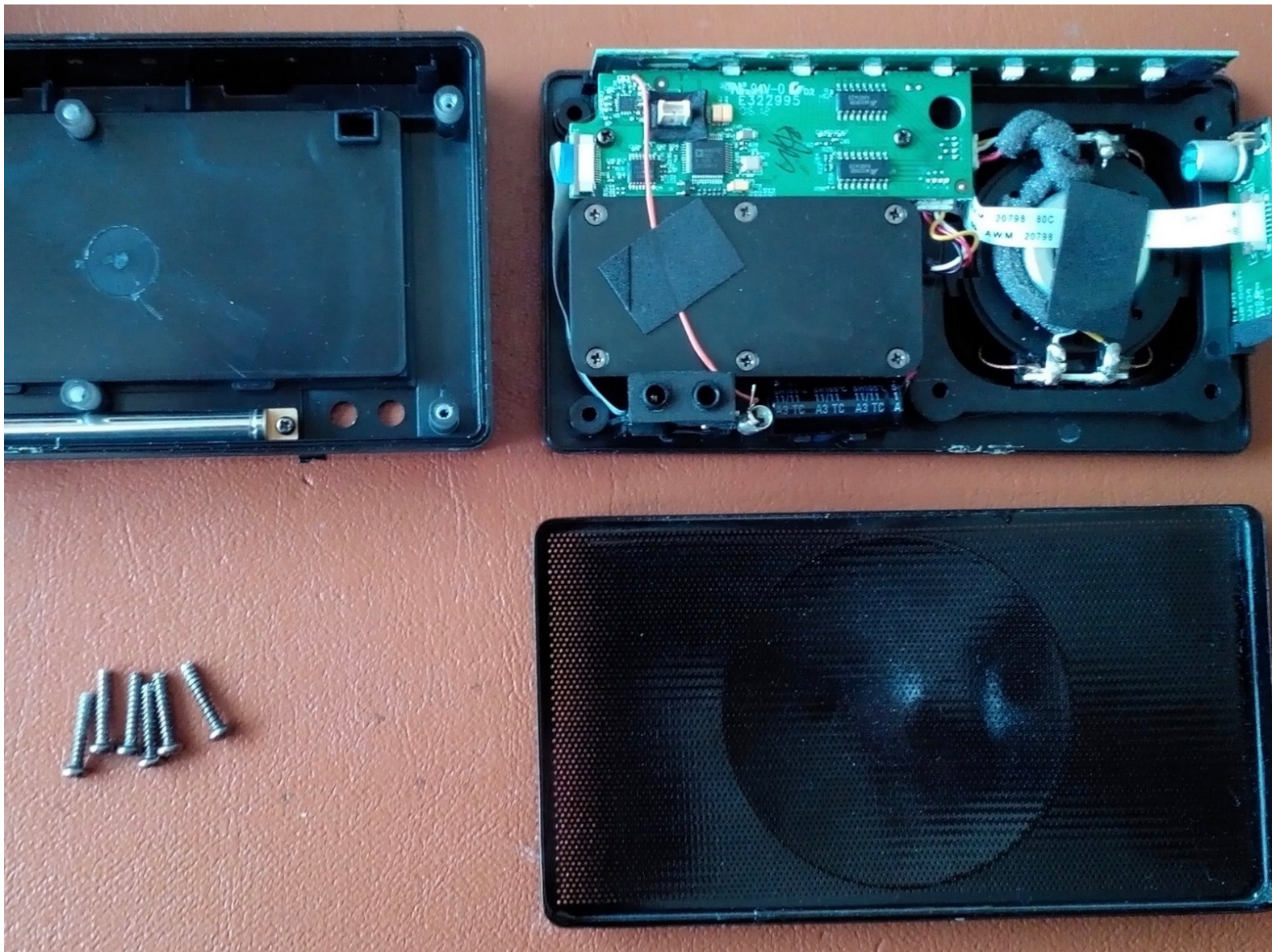




# Geneva XS Demontage

The device is disassembled into all its individual parts.

Written By: Leonard Kesting



---

## INTRODUCTION

It is shown step by step the complete disassembly of the device. Since there was no sign of life any more, I took it apart. The problem was finally a loose plug, which stopped the power supply of the device. The example shown here is unfortunately broken off from the outer shell, but this should not change the procedure.

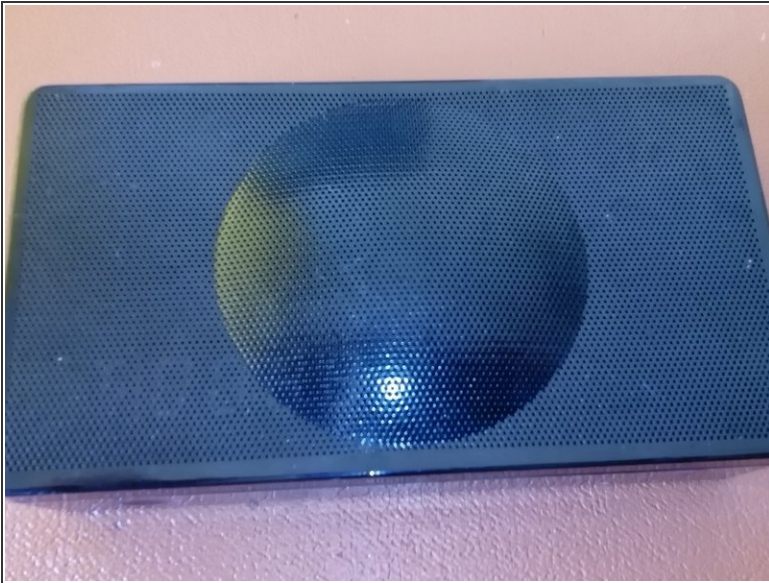


### TOOLS:

- [Metal Spudger Set](#) (1)
  - [Phillips #2 Screwdriver](#) (1)
  - [Phillips #1 Screwdriver](#) (1)
-



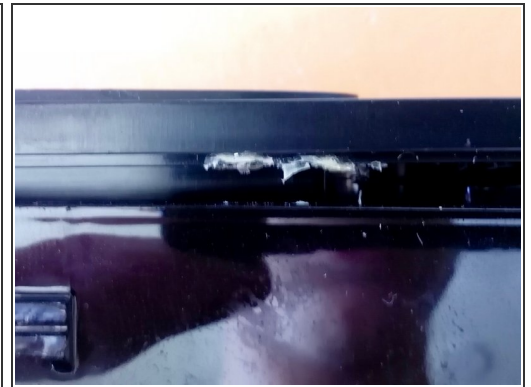
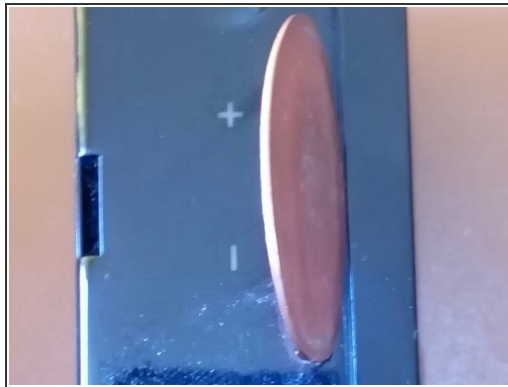
## Step 1 — Geneva XS Demontage



⚠ Disable any power supply:

- Remove the battery by prying up the rear cover on the two slots
- Disconnect charger (5.5V 2A)

## Step 2



- The metal grille, in the front of the device by pry remove. Here is a thin plastic or metal object to use (in the picture is a letter opener to see), a coin is actually too thick. This can be a little hard!

⚠ It is almost impossible to damage the plastic body easily.

- There may be a splice on the floor, but in my case it did not resist.

## Step 3



- Remove the six screws with a PH2 screwdriver

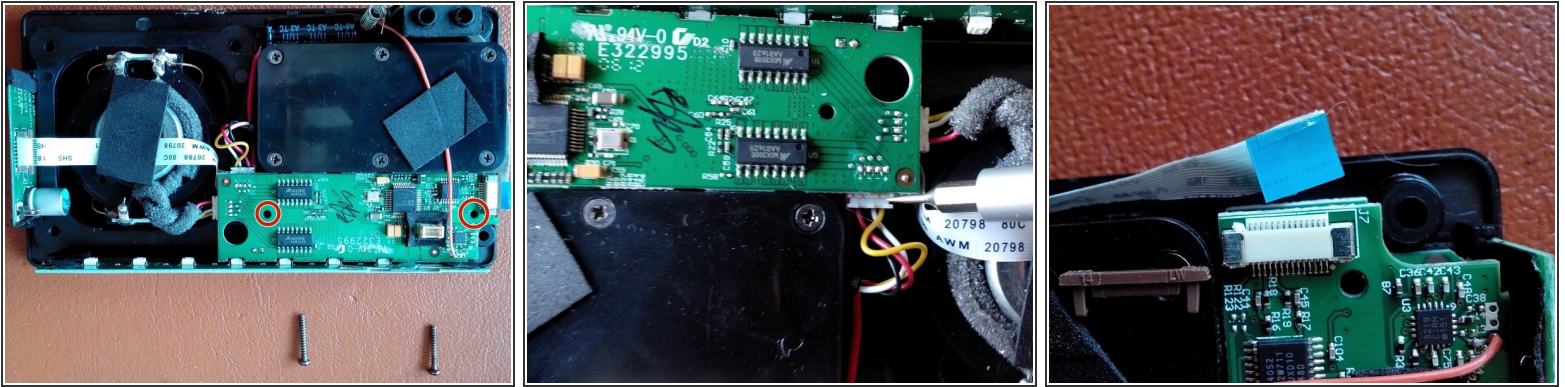
## Step 4



- Now the electronics can be removed from the carcass.

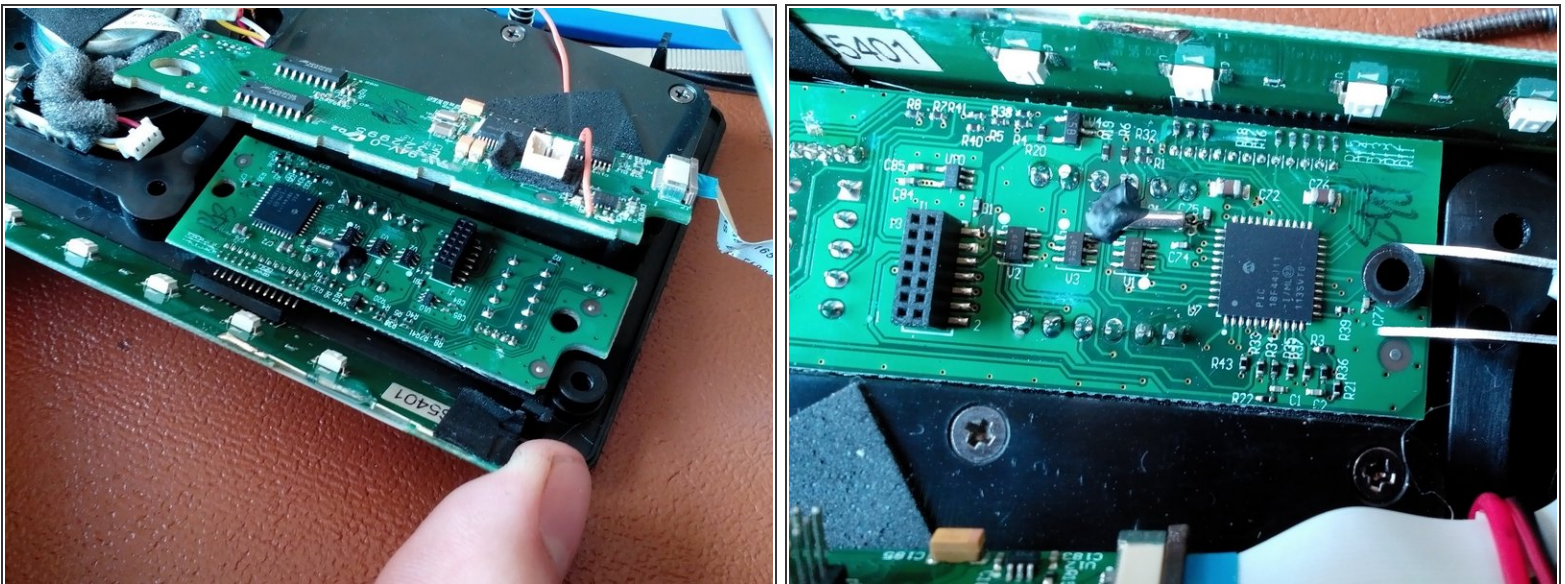


## Step 5



- With a PH1 screwdriver, the two remaining screws which hold the two larger boards arranged above each other can be removed.
- The flat white plugs can be removed with a screwdriver from the board.
- The width on the left edge of the device is held in place with a brown clip that can be easily pulled out. Thereafter, the flat cable is directly loose.

## Step 6

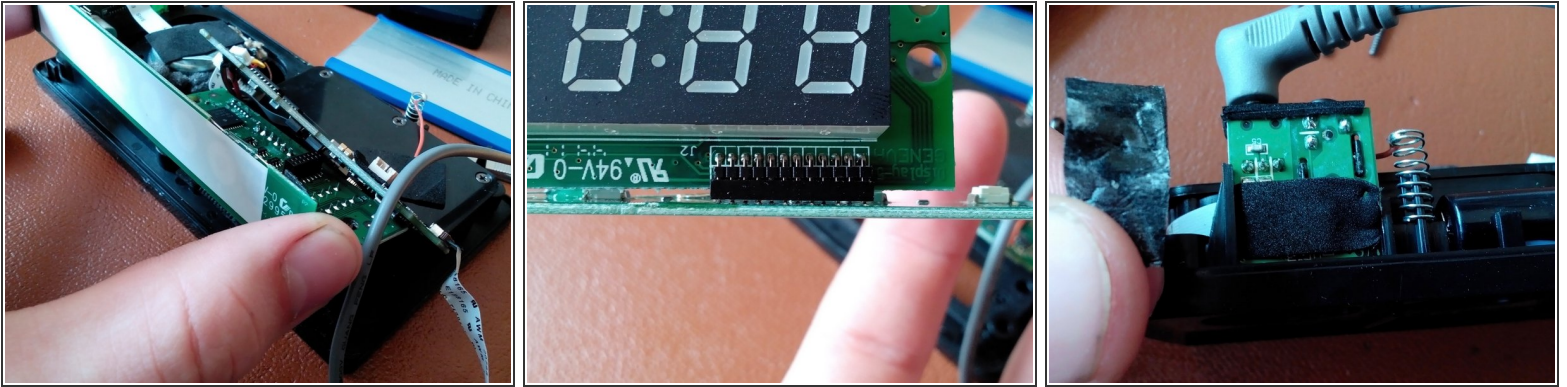


- When removing the board, be sure to watch out for the soldered cables, which will not let you play too much.
- Below are two black spacers (plastic) to light. Can be removed by hand or with tweezers.

This document was generated on 2021-01-22 02:39:08 AM (MST).



## Step 7



- Now the media panel can be removed together with the bottom chip. It is essential to pay attention to the plug contacts between them. (see 2nd picture)
- Next, the board is located on the charging socket sits. To do this, remove the adhesive pads.

## Step 8



- This can then easily be deducted upwards.

## Step 9 — Assembly



- The assembly is actually the same backwards.
- Clean the area around the controls THOROUGHLY because they are otherwise always "activated".
- ⚠ Be sure to pay attention to the flat cable on the left side of the device! This was the one that caused problems for me.

Repeat the steps in order to reassemble your device.