



# Texas Instruments TI-84 Plus CE Battery Replacement

Replace the battery in your TI-84 Plus CE.

Written By: o355



## INTRODUCTION

The TI-84 Plus CE features a replaceable 1200 mAh battery. It is designed to last "Up to one month" with standard use.

If your battery is holding a reduced charge or your calculator is having issues that may be related to the battery, you can replace it using this guide. This may also be helpful to swap batteries from time to time as well.



### TOOLS:

- [Phillips #0 Screwdriver](#) (1)




### PARTS:

- [Official TI-84 Plus CE Battery](#) (1)  
*From Texas Instruments. Note: you do not need the battery from Amazon if you buy one here.*
- [TI 84 Plus CE/ Nspire CX \(CAS\) Battery](#) (1)  
*From Amazon. Note: you do not need the battery from Texas Instruments if you buy one here.*

## Step 1 — TI-84 Plus CE Battery Repair





- Make sure your TI-84 Plus CE is off before starting the repair.

 Any objects in your RAM will be removed if the battery is taken out. To ensure your objects are safe, archive them or back them up to a computer.

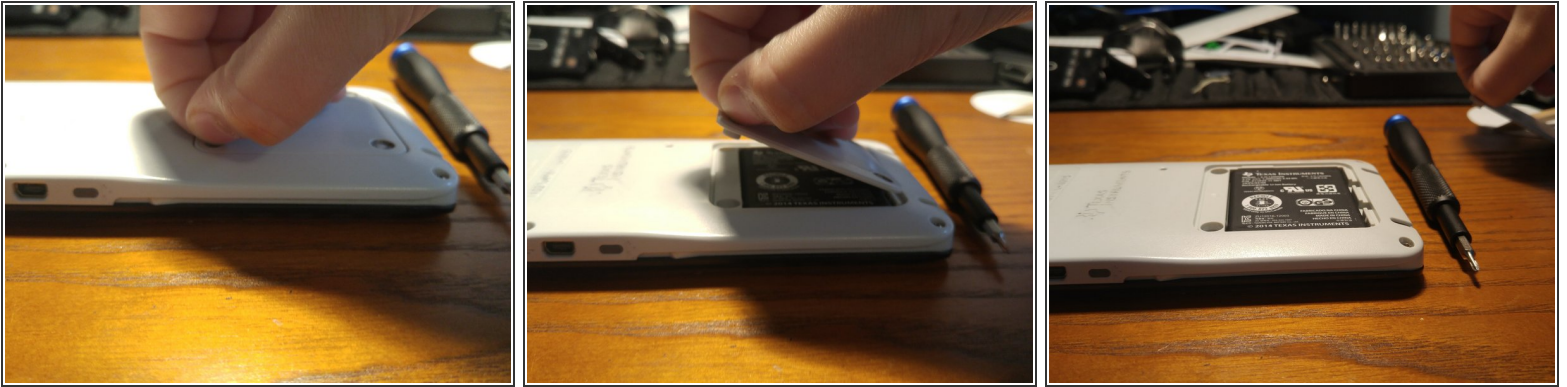
## Step 2 — Battery door



- Locate the 2 Philips screws on the back of your calculator, as outlined.
-  These screws are not to be confused with the 6 Torx T6 screws surrounding the calculator.
- With a Philips 0 or 00 screwdriver, unscrew the two screws.
-  The two Philips screws will not come out of the battery door, and will stay attached. Do not attempt to remove them completely.



### Step 3 — Battery door lift



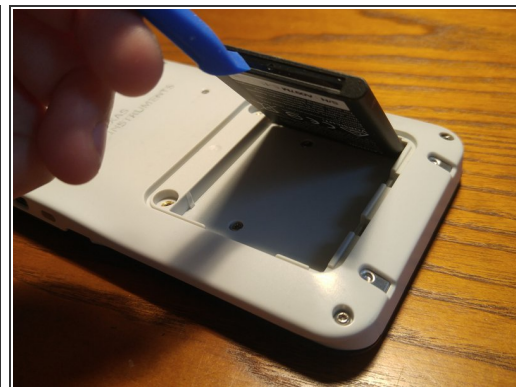
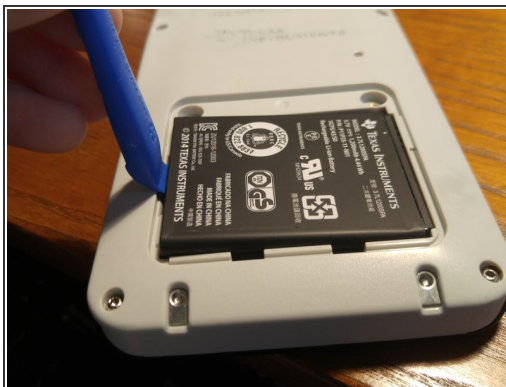
- Lift the battery door by grasping one of the two screws that are unscrewed, and pulling upwards.
- ⓘ Be sure to lift gently, as little force is needed to get the battery door removed.

### Step 4 — Battery removal using your nails



- Pull out the battery using your nails, by inserting your nail into the small cut out, and lifting up on the battery.
- ⓘ As an alternative, you can use an opening tool. Go to Step 5 to see the procedure.

## Step 5 — Battery removal using an opening tool



- Put your opening tool in the small opening as described in the photos.
- Gently pull out the battery. You may need to hold your calculator to prevent your calculator from sliding around your working surface.

To reassemble your device, follow these instructions in reverse order.