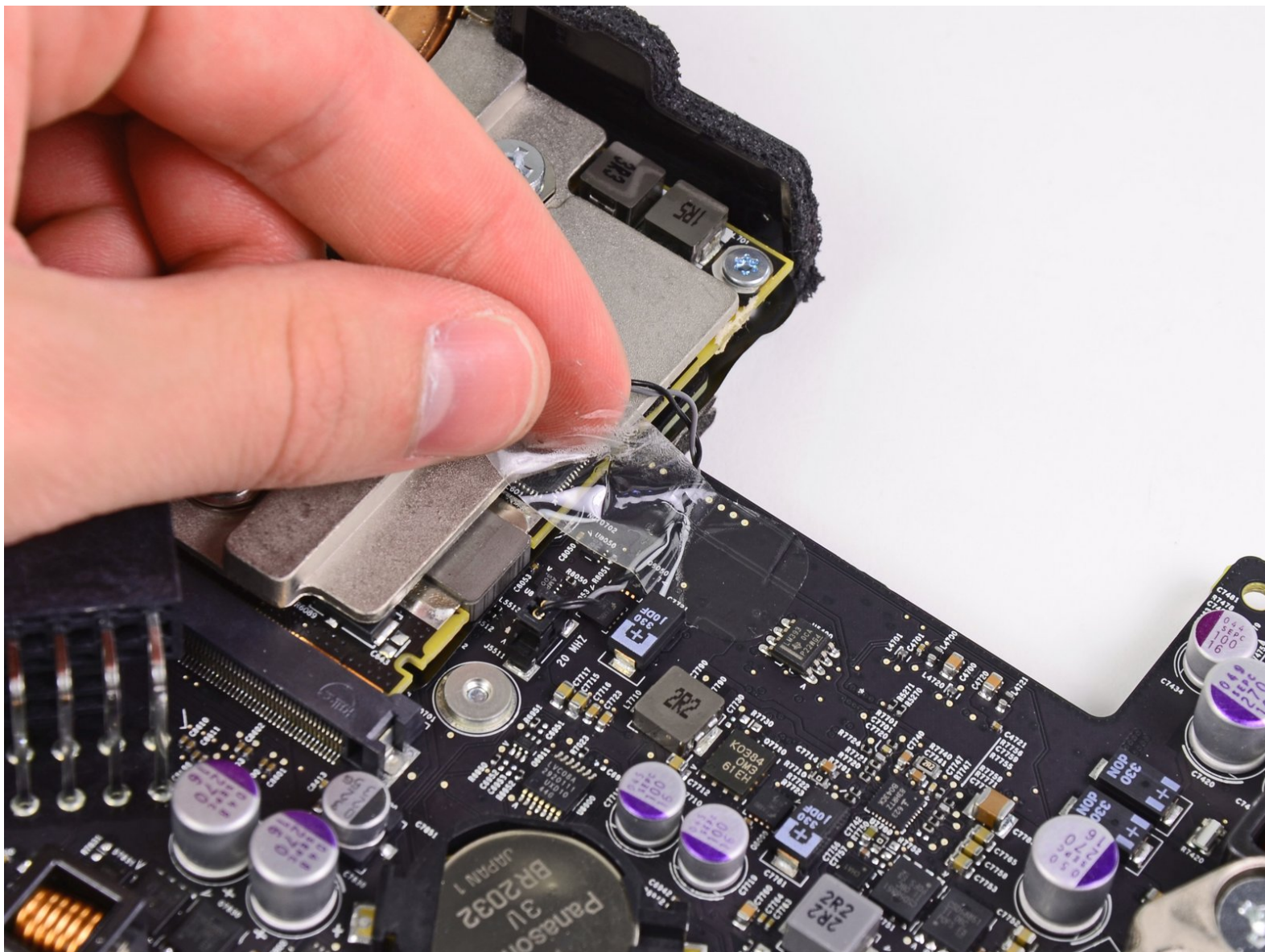




iMac Intel 21.5" EMC 2389 GPU Assembly Replacement

Internal Prerequisite.

Written By: Andrew Bookholt



INTRODUCTION

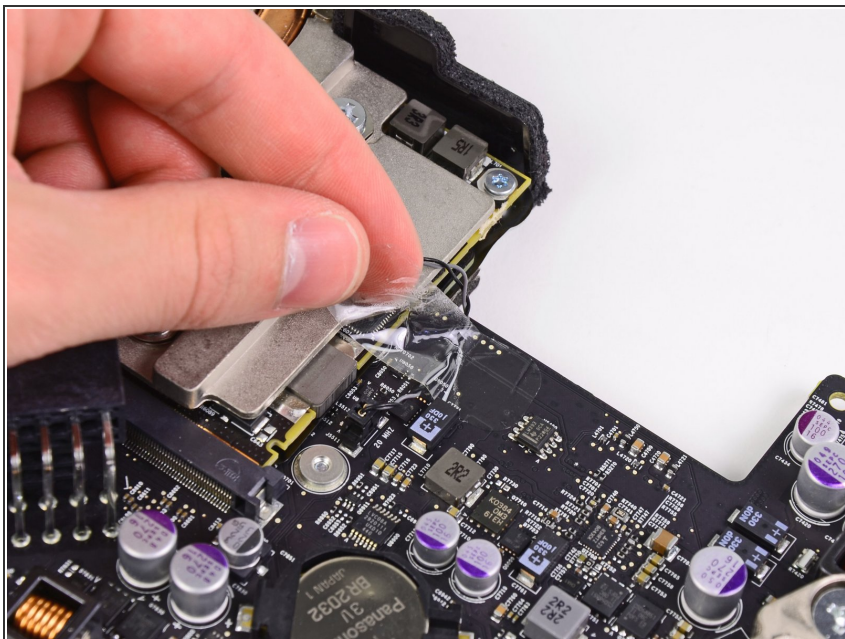
Internal Prerequisite.



TOOLS:

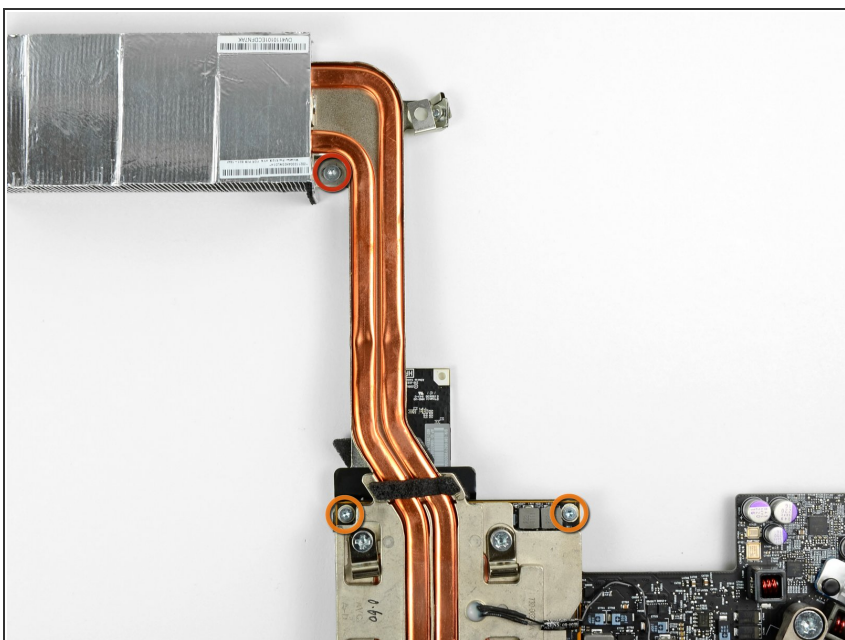
- [T8 Torx Screwdriver](#) (1)
 - [T10 Torx Screwdriver](#) (1)
-

Step 1 — GPU Assembly



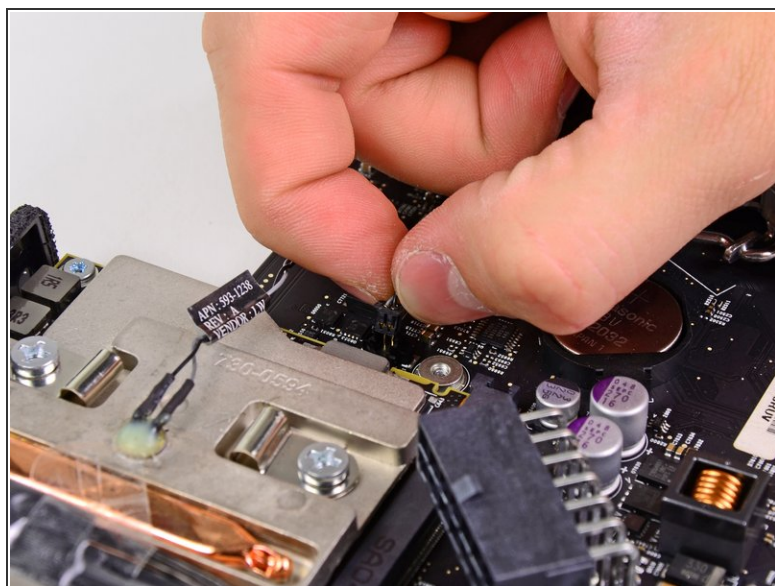
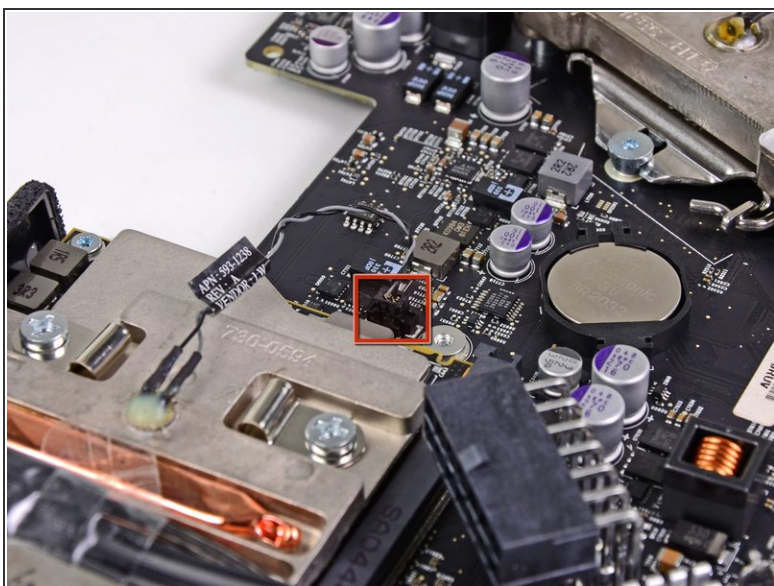
- Remove the strip of tape securing the GPU thermal sensor cable to the logic board.

Step 2



- Remove the following three screws:
 - One 4.2 mm T10 Torx screw
 - Two 5 mm T8 Torx screws

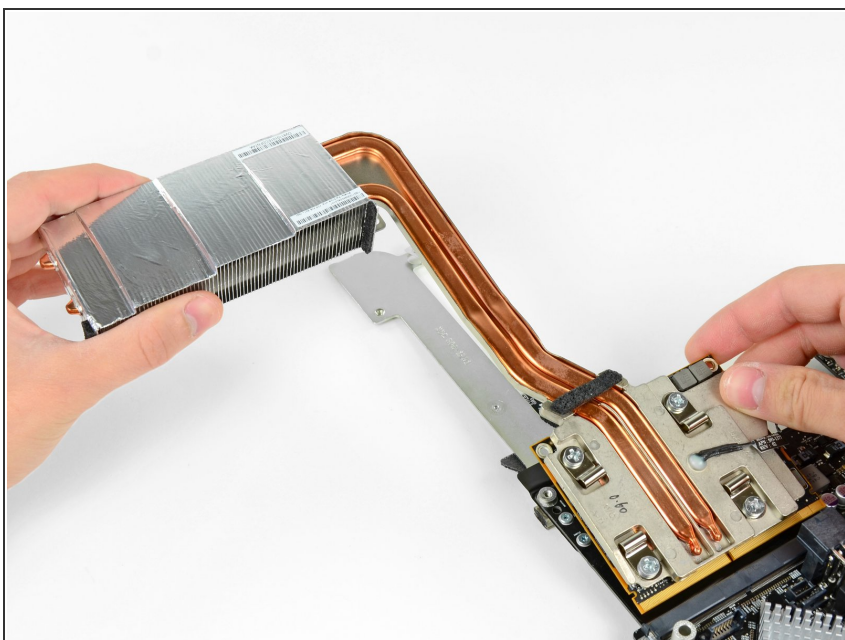
Step 3



- Grab the GPU thermal sensor cable connector and pull it straight up and out of its socket on the logic board.

⚠ Do not pull the connector out by its cables.

Step 4



- Lift the GPU heat sink slightly and pull the GPU board out of its socket on the logic board.

To reassemble your device, follow these instructions in reverse order.