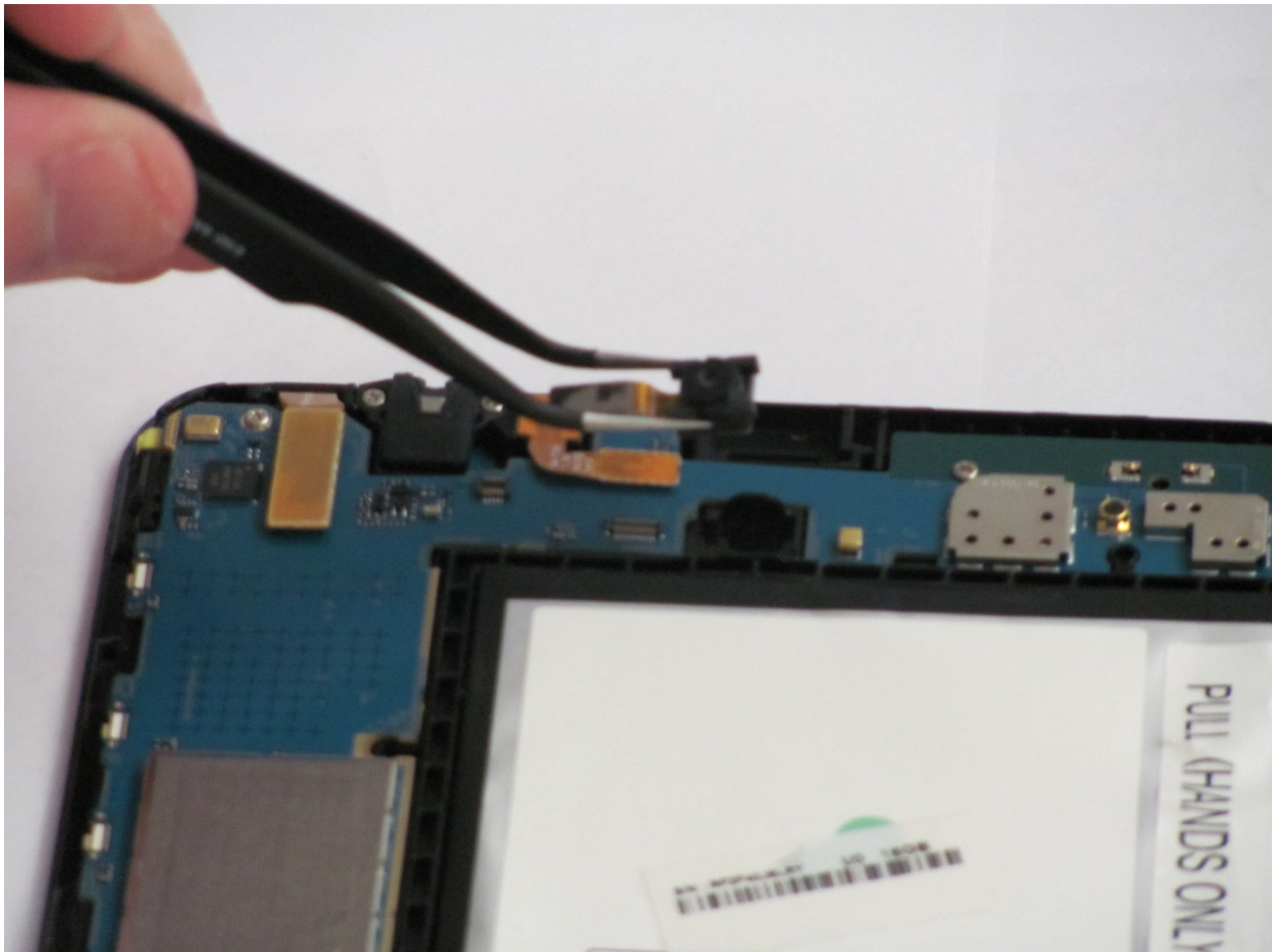




# Samsung Galaxy Tab 4 8.0 Wi-Fi Rear Facing Camera Replacement

After completing this replacement guide you will have successfully replaced/ repaired your rear facing camera on your tablet.

Written By: Cameron Morrow



## INTRODUCTION

This guide will show you how to remove and replace the rear facing camera on the Samsung Galaxy Tab 4 8.0 Wi-Fi.



### TOOLS:

- [Tweezers](#) (1)
- [iFixit Opening Tools](#) (1)



### PARTS:

- [Galaxy Tab 4 8.0 Rear Camera](#) (1)

## Step 1 — Rear Case



- ⓘ Before you begin the replacement process, make sure the tablet is completely powered off.
- Gently insert the plastic opening tool between the metal rim and the back plastic casing at the bottom of the tablet and pry the back casing away from the device. Continue to separate the back panel of the device from the front assembly.
- ⓘ Right-handed users will probably be more comfortable prying in a clockwise movement, while left-handed users will feel more comfortable doing a counter clockwise movement.
- ⓘ When taking off the rear case there will be periodic clicking noises. Do not worry about those noises. They are just the rear case being disconnected.
- ⚠ Be careful not to use too much force as the plastic clips can easily be broken.

## Step 2



- Place the tablet screen down on a clean surface.
- Grasp the back panel and lift it from the device.

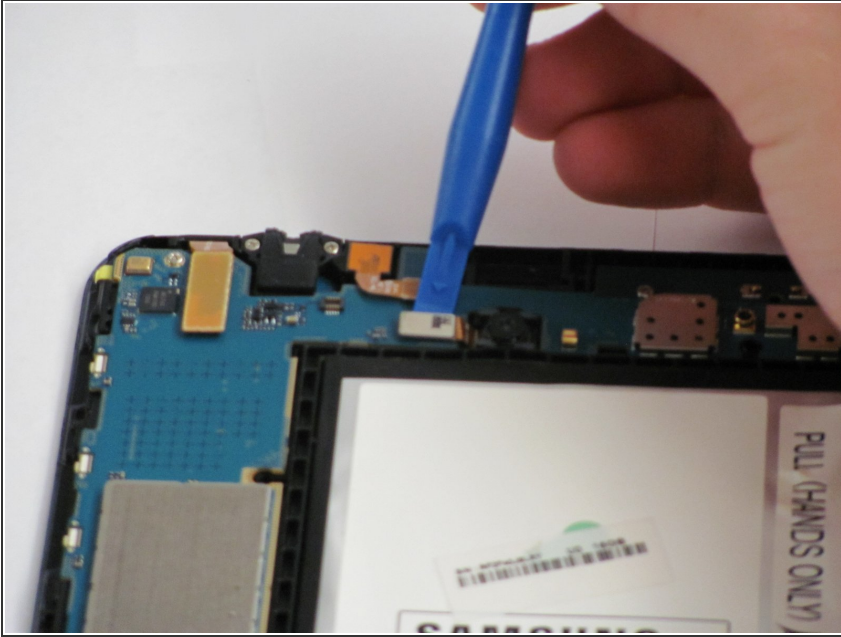
## Step 3 — Rear Facing Camera



- The rear facing camera will be located just to the right and below the front facing camera, near the top and center of the motherboard.

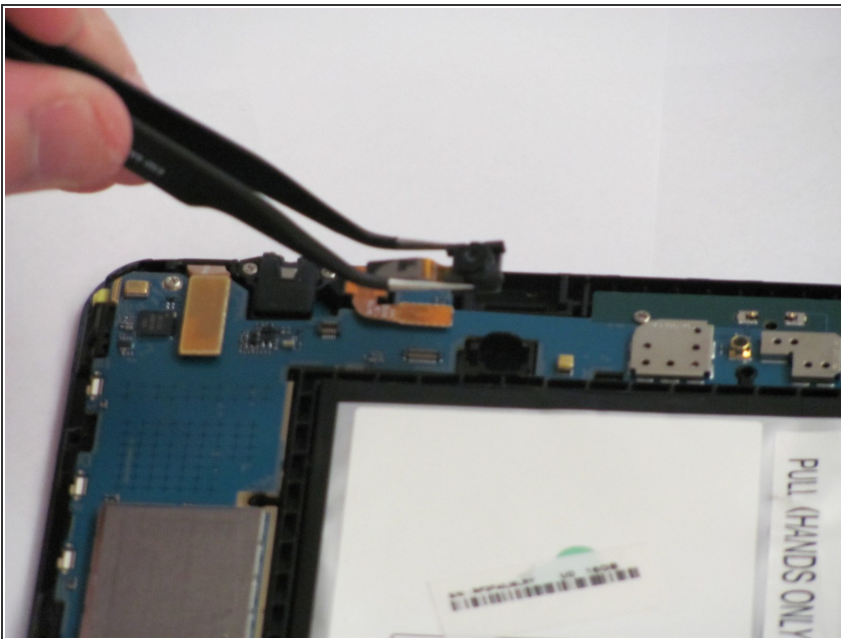


## Step 4



- Slide the flat end of the blue plastic opening tool underneath the rectangular metal connector of the rear facing camera.
- Apply slight pressure outwards until the camera's metal connector pops from its socket on the motherboard.

## Step 5



- Remove the camera from it's housing with your tweezers.

To reassemble your device, follow these instructions in reverse order.