



# Moto X Pure Edition Auxiliary Port Replacement

Follow this guide to replace the auxiliary port...

Written By: Lucas Dos Santos



# INTRODUCTION

Follow this guide to replace the auxiliary port in the Moto X Pure Edition.

Before you begin, download the [Rescue and Smart Assistant](#) app to backup your device and diagnose whether your problem is software or hardware related.

---

## TOOLS:

[iOpener](#) (1)  
[Tweezers](#) (1)  
[T3 Torx Screwdriver](#) (1)  
[iFixit Opening Picks \(Set of 6\)](#) (1)  
[Spudger](#) (1)  
[SIM Card Eject Tool](#) (1)

## PARTS:


[Moto X Pure Rear Cover Adhesive](#) (1)

---

## Step 1 — Opening Procedure



- [Prepare an iOpener](#) and heat the back of the phone along its right edge for about five minutes. This will help soften the adhesive securing the back cover.
- ⓘ You may need to reheat and reapply the iOpener several times to get the phone warm enough. Follow the iOpener instructions to avoid overheating.

 A hair dryer, heat gun, or hot plate may also be used, but be careful not to overheat the phone—the LCD display and internal battery are both susceptible to heat damage.

## Step 2



- In the following steps, you'll be cutting through the adhesive securing the back cover.
- ⓘ The adhesive is laid out as seen in the first image, which shows the inside of the cover.
- **Avoid slicing in this area to avoid damaging delicate ribbon cables.**

## Step 3



- Hold a pair of pointed [tweezers](#) closed, and insert them into the small hole on the edge of the back cover near the SIM card slot.
- Use the tweezers to lift the cover up slightly, and slide an opening pick into the gap between the cover and the frame.

## Step 4



- Slide the opening pick along the edge of the phone to slice through the back cover adhesive.
  - Try to insert the pick as far as you can underneath the cover, toward the center of the cover. There's thick adhesive on the middle of the cover that must be separated.
- ⓘ Leave the pick in place as you proceed to the next step. Leaving the pick inserted can help prevent the glue you just separated from re-adhering.

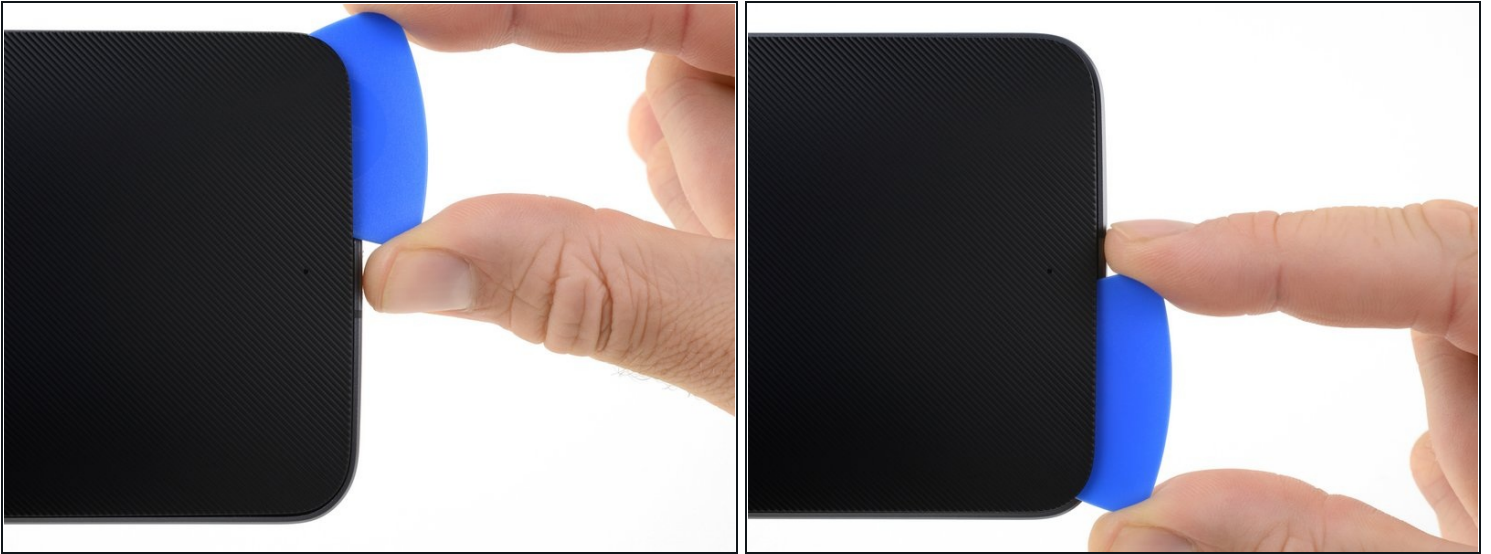
## Step 5



- [Prepare an iOpener](#) and heat the back of the phone along its left edge for about five minutes. This will help soften the adhesive securing the rest of the back cover.
- ⓘ You may need to reheat and reapply the iOpener several times to get the phone warm enough. Follow the iOpener instructions to avoid overheating.



## Step 6



- Slice through the adhesive along the bottom edge of the phone.
  - ① Re-heat the back cover as needed to prevent the glue from cooling and hardening.

## Step 7



- Slice through the adhesive along the left side of the phone.
  - Try to insert the pick as far as you can underneath the cover, toward the center of the cover. There's thick adhesive on the middle of the cover that must be separated.

**⚠ Stop cutting when you get to the edge of the volume buttons. Cutting past this point may damage the ribbon cables underneath the cover.**

## Step 8



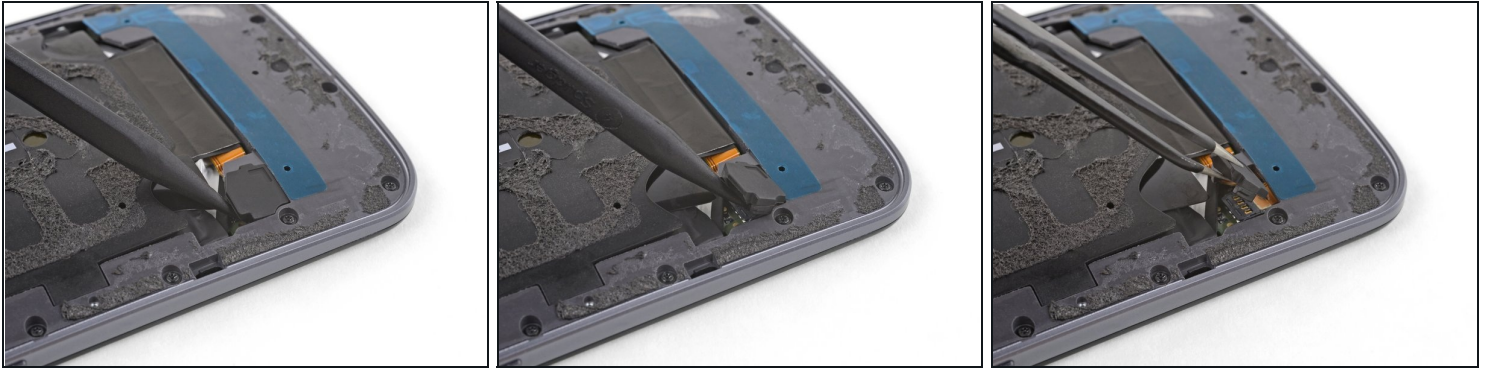
- Slice through the adhesive along the top edge of the phone, pulling the pick out slightly to guide it around the rear-facing camera.

## Step 9



- Carefully pry the cover away from the phone.
  - ⓘ This may take a lot of force if the adhesive in the middle is still attached. As you lift the cover, you may need to use an opening pick to slice through any remaining adhesive.
- ★ To reinstall the back cover:
  - First use tweezers and a spudger to peel and scrape away any remaining adhesive from both the back cover and the phone's chassis.
  - Then, clean the adhesion areas with high concentration isopropyl alcohol (at least 90%) and a lint-free cloth. Swipe in one direction only, not back and forth. This will help prep the surface for the new adhesive.
  - Replacement adhesive comes in a pre-cut sheet to match the exact contours of the back cover. If that's not available, you can use a high-bond double-sided tape, such as [Tesa 61395](#). Before installing the precut adhesive on the back cover, [remove the metal insert](#). Install the adhesive, then replace the insert.
  - After installing the back cover, apply strong, steady pressure to your phone for several minutes to help the adhesive form a good bond.
- ⓘ If desired, you may reinstall the back cover without replacing the adhesive. Remove any large chunks of adhesive that might prevent the back cover from sitting down flush. After installation, heat the back cover and apply pressure to secure it.

## Step 10



- Use the point of a spudger to pry up the rubber cover over the battery connector.
- Remove the rubber cover.

## Step 11



- Use the flat end of a spudger to pry the battery connector straight up and out of its socket.
  - ① Only pry the small tab on the end of the connector opposite the ribbon cable. Do not push against the connector too hard or you risk damaging the plug on the motherboard.

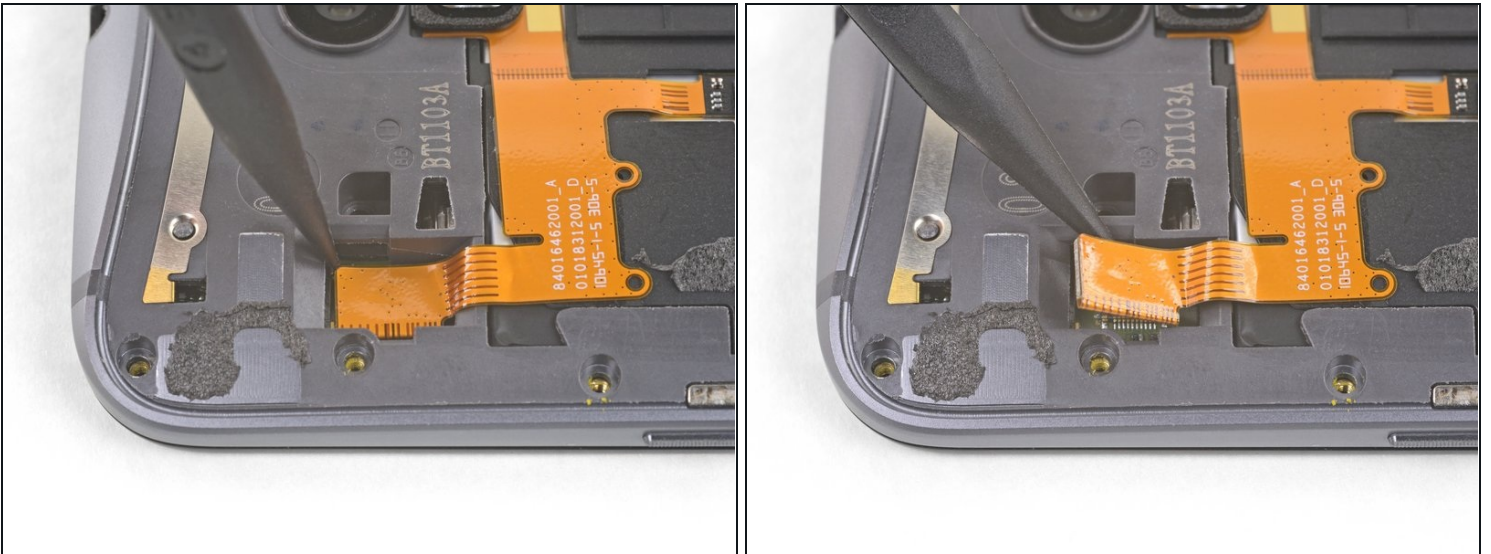


## Step 12



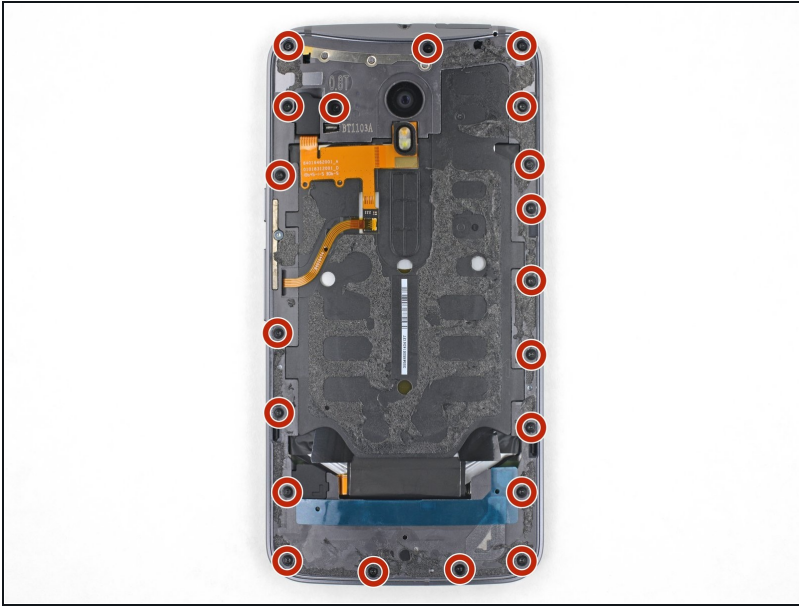
- Use tweezers to lift away the rubber cover over the flash connector.

## Step 13



- Use the tip of a spudger against the corner of the flash connector to pry the connector straight up and out of its socket.

## Step 14



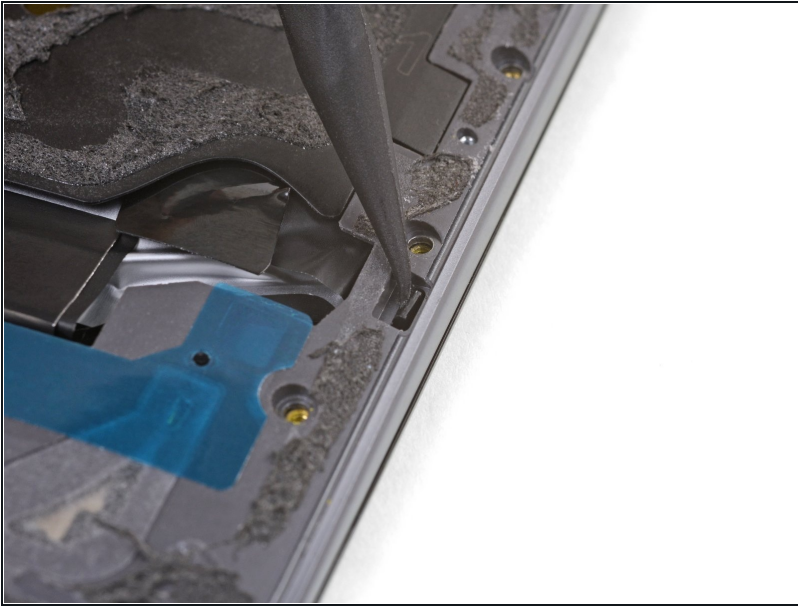
- Use a T3 Torx driver to remove twenty 2.4 mm screws.

## Step 15



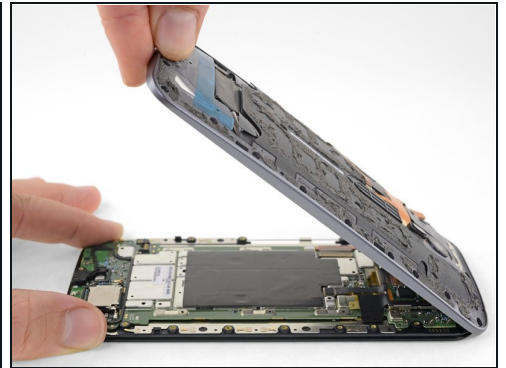
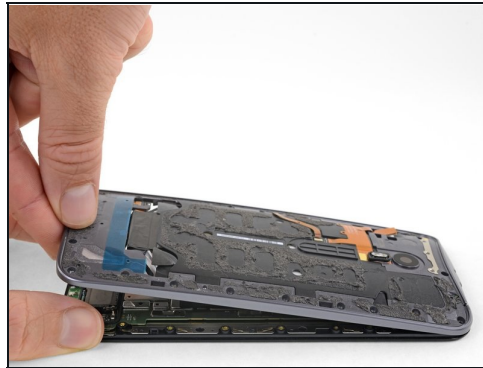
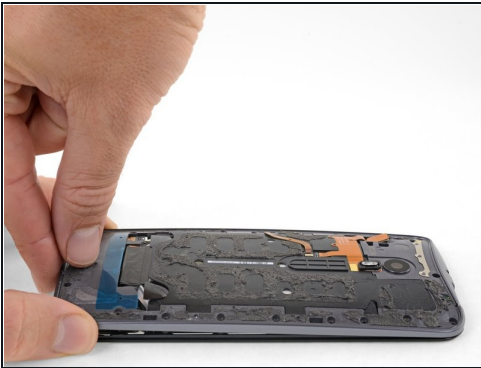
- Use the point of a spudger to push the small clip securing the left side of the midframe toward the edge of the phone, releasing the clip.

## Step 16



- Repeat the previous step to release the right side midframe clip.

## Step 17



- Holding the display by the edges, gently lift the midframe away from the display.
- Remove the midframe from the display.

## Step 18 — Auxiliary Port



- Using the nylon spudger, remove the auxiliary port.

---

To reassemble your device, follow these instructions in reverse order.