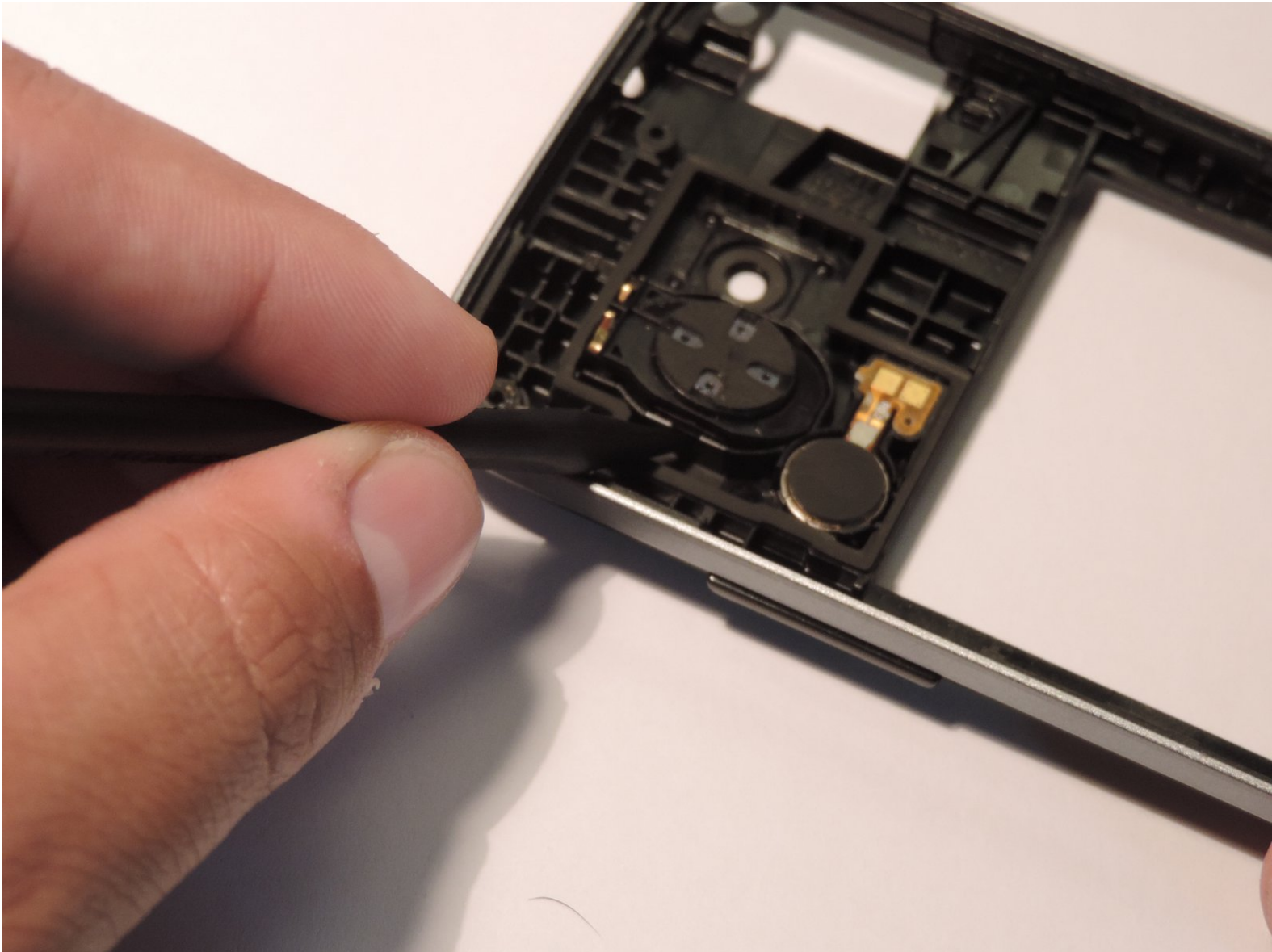




Samsung Galaxy Star Pro Speaker Replacement

Guides showing how to replace the speakers on the device.

Written By: Kevin Teque



INTRODUCTION

The speaker allows you to enjoy all your favorite music and videos with clear sound from your phone. Speakers can become distorted and lose sound quality from use overtime. Static sound or unclear sound can be a cause for a concern that your speaker may be blown and needs to be replaced. This guide will show you how to replace the speaker in your device in no time.



TOOLS:

- [iFixit Opening Tools](#) (1)
 - [Screwdriver](#) (1)
-

Step 1 — Battery Replacement



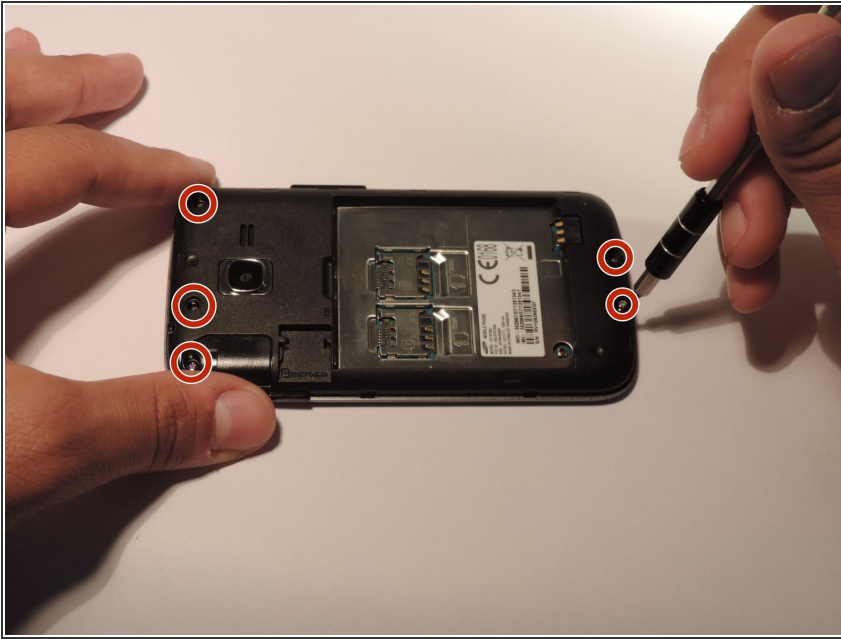
- Place phone firmly between both hands with one hand flat on the back of the phone and pop off the back cover

Step 2



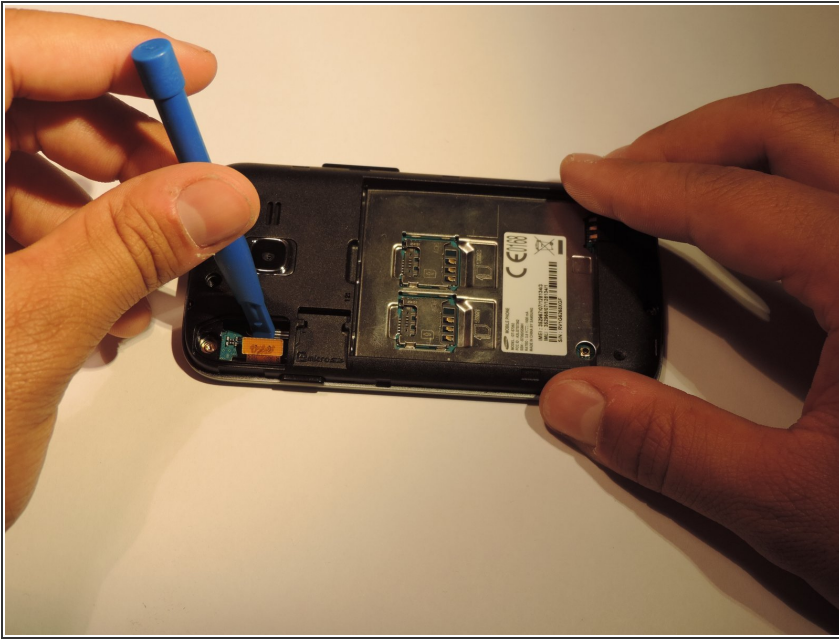
- Once rear cover is off use small pastic spudger to lift battery out of the phone

Step 3 — Screen




- After following how to remove the battery, unscrew the five 1.2mm Phillips Screws on the one back of the phone using screw driver. Use the J00 Phillips head screw bit to take out the screws

Step 4



- Once screws are removed turn the phone over and use the plastic opening tool and unclip the connector holding the screen to the motherboard.

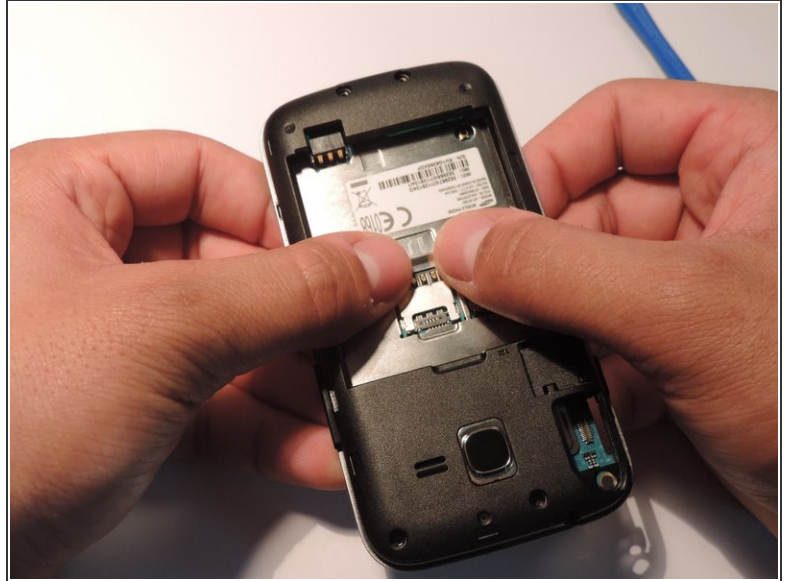
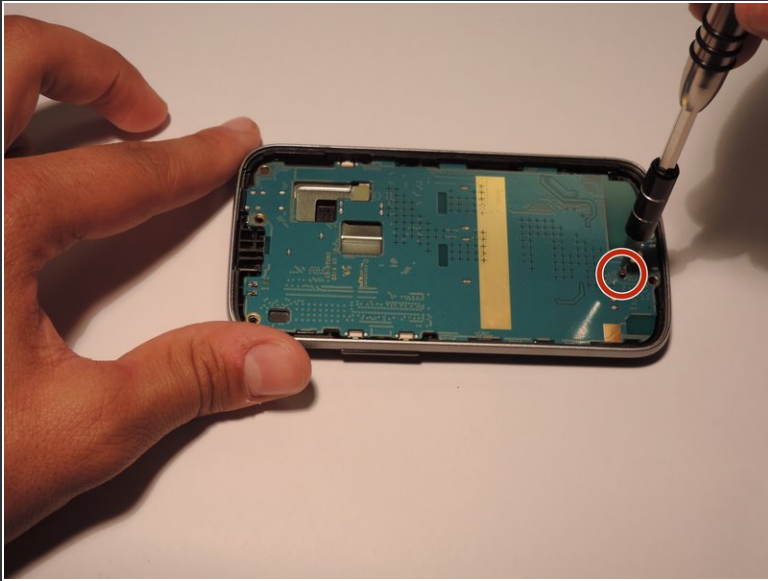
 Be careful to not damage the press-fit connector that connects the screen to the motherboard.

Step 5



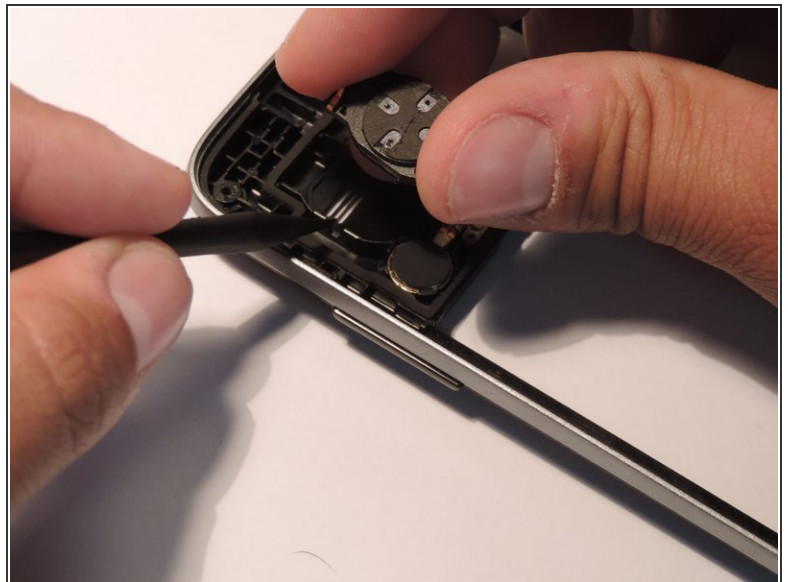
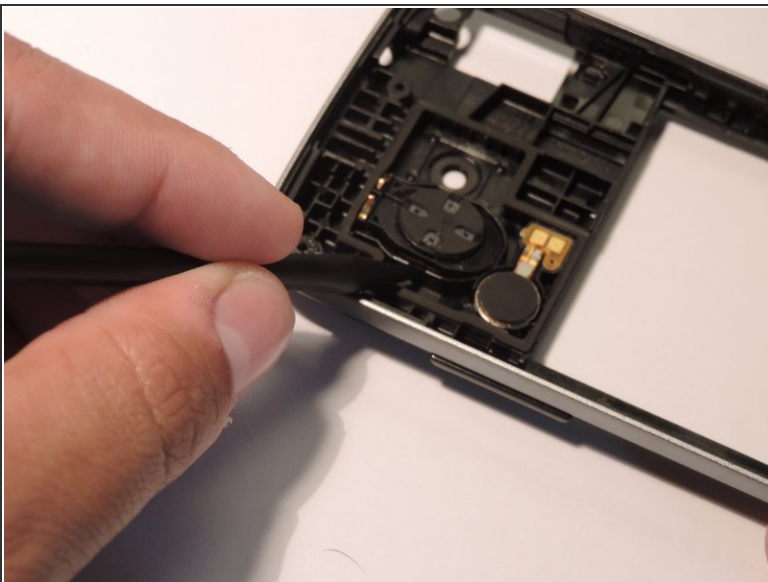
- Use the plastic opening tool to pry apart the screen from the plastic. Start from one side and work your way around the whole phone.

Step 6 — Motherboard



- Unscrew the 1.2mm Phillip screw that connects the motherboard to the rest of the phone. Then by using your thumbs pop the inners of the phone out. Also use same J00 Phillips head bit from prior steps.

Step 7 — Speaker



- Use plastic tools to grab hold of one side of the speaker on the motherboard, and then gently lift. There is nothing holding the speakers, so it should come right off.

To reassemble your device, follow these instructions in reverse order.