



TaoTronics TT-SK06 Charging Port Replacement

If the device will not charge when plugged into...

Written By: Niko Fabian



INTRODUCTION

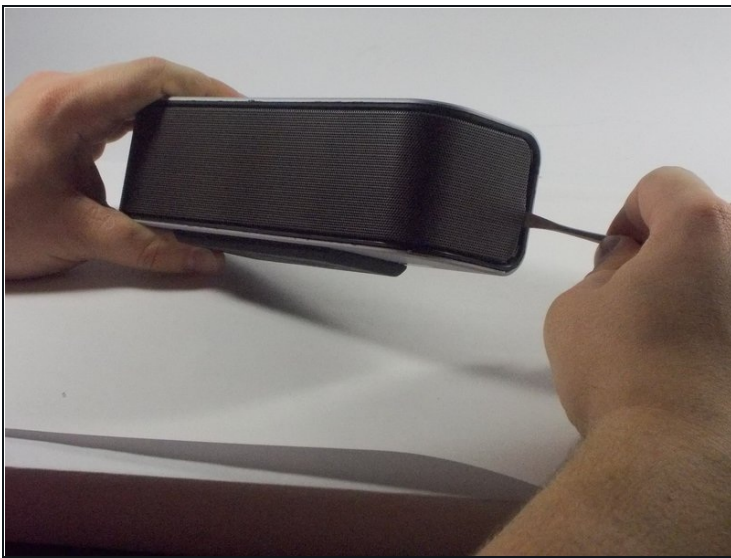
If the device will not charge when plugged into an outlet, you will have to replace the charging port on the device. This is how you will replace it.

TOOLS:


Metal Spudger Set (1)

Tweezers (1)

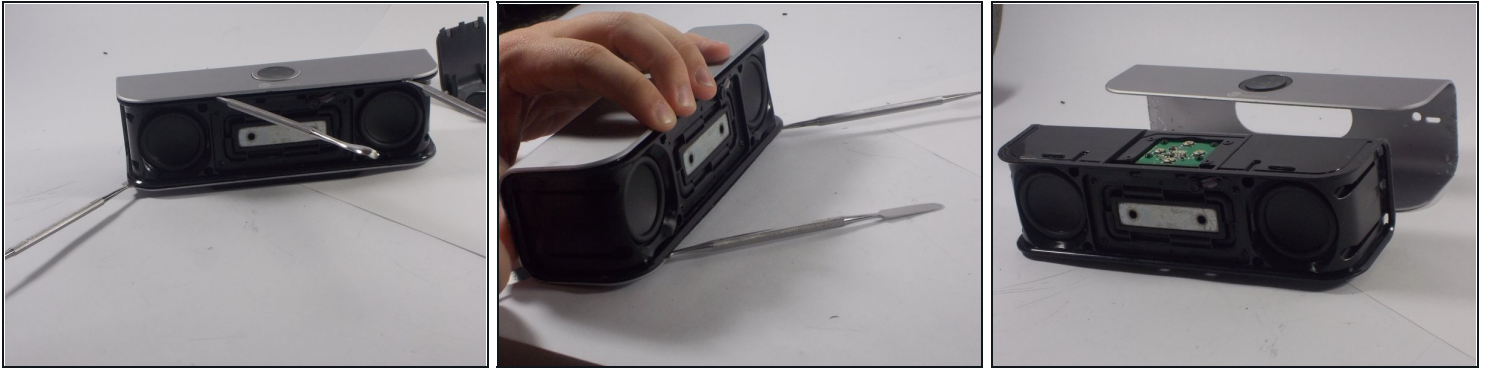
Step 1 — Front Grate



- To remove the front grate of the speaker grab a metal spudger and go to the back corner of the device where the front panel curves around the device. Insert the spudger and pry apart the corner until clips release from panel. Repeat for the other side of the grate. When all clips are released pull grate off from the front of device

 When working with electronics, it's important to choose a tool that's ESD-safe to avoid accidental damage to the device. The metal spudger is great when you need serious prying power, but the regular black nylon spudger or a plastic opening tool should be used whenever possible.

Step 2



- Grab two metal spudgers and insert one into the slit underneath the silver plating on the top of the device. Pry upward with the spudger until you unhook the two locks on the top. Repeat same step for the bottom of the device. When all four tabs are released, slide device out of the casing

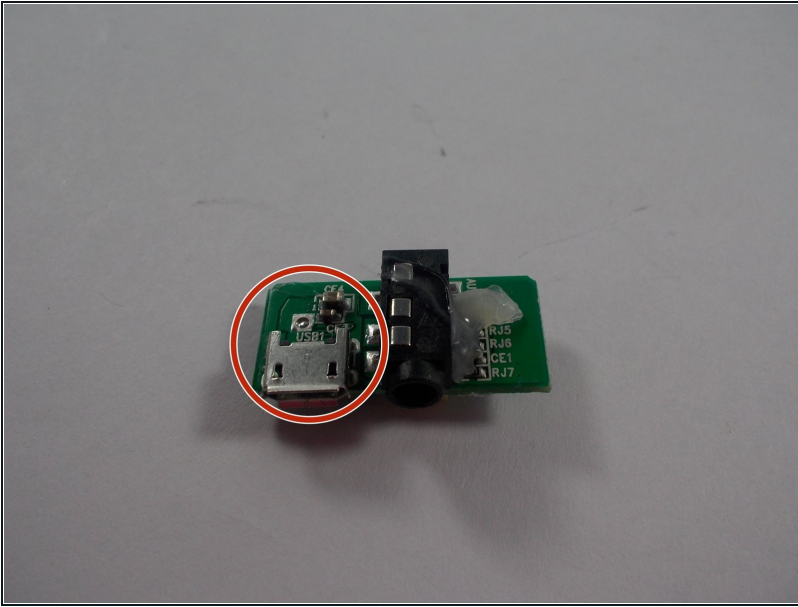
⚠ Use caution when working with the metal spudger, as it can potentially damage your device.

Step 3 — Charging Port



- Locate the slit on the back of the device and the board will be located there. Remove board from slit by using [tweezers](#).

Step 4



- Once board is removed, locate silver component on the board. This is the charging port. Remove the charging port. To put it back on the board you need to solder the component back onto the board.

To reassemble your device, follow these instructions in reverse order.