



Vtech Kidibeats Drum Set White Drum Head Replacement

Replace the white drum head(s) in order to bring back proper safety and functionality to your drum set.

Written By: Aaron Klementowski



INTRODUCTION

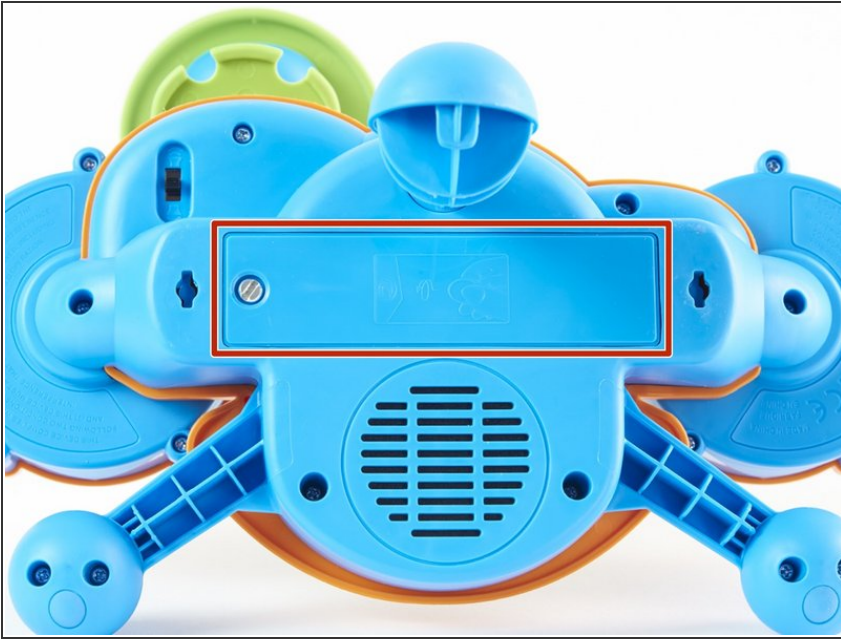
A broken or cracked drum head can be very hazardous to small children. Additionally, a damaged drum head could prevent the drum set from working properly. This guide is designed to show how to correctly replace the white drum head(s) in order restore your drum set to a safe and functioning condition.



TOOLS:

- [Phillips #00 Screwdriver](#) (1)
 - [Phillips #2 Screwdriver](#) (1)
-

Step 1 — Back Panel



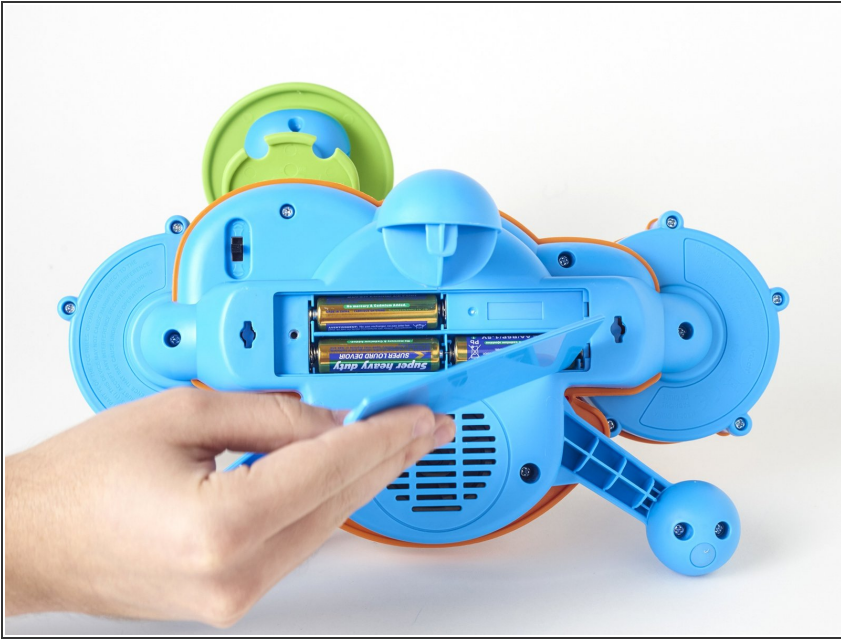
- Locate the battery panel that is centered between the three leg supports at the bottom of the drum set.

Step 2



- To remove the battery panel, loosen the 10 mm panel screw using a flathead 4.0 screwdriver.
- ⓘ You can also use a small coin to loosen the screw.

Step 3



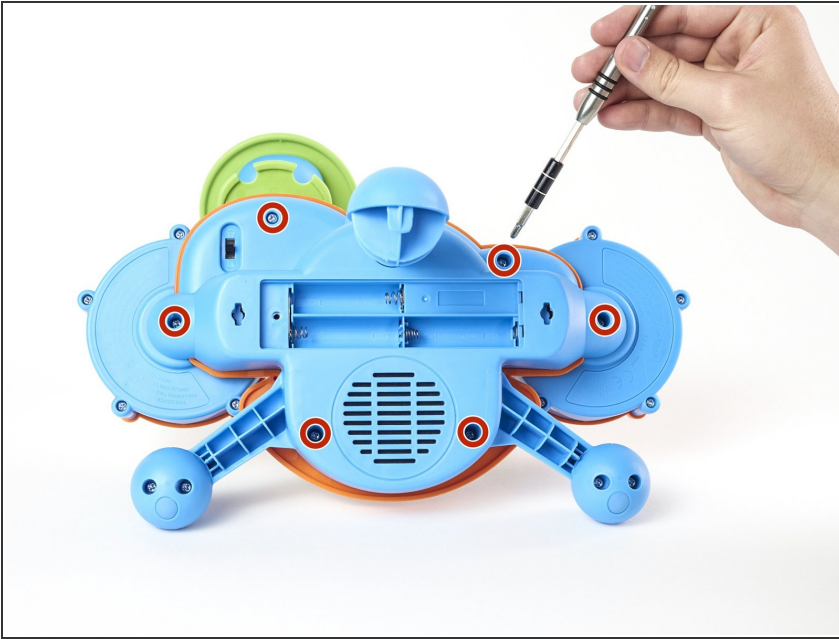
- Using your fingers, pry open and remove the back battery panel.

Step 4



- Use your fingers to remove each battery from its housing.

Step 5




- Using a Phillips #2 screwdriver, loosen and remove the six 14 mm screws.

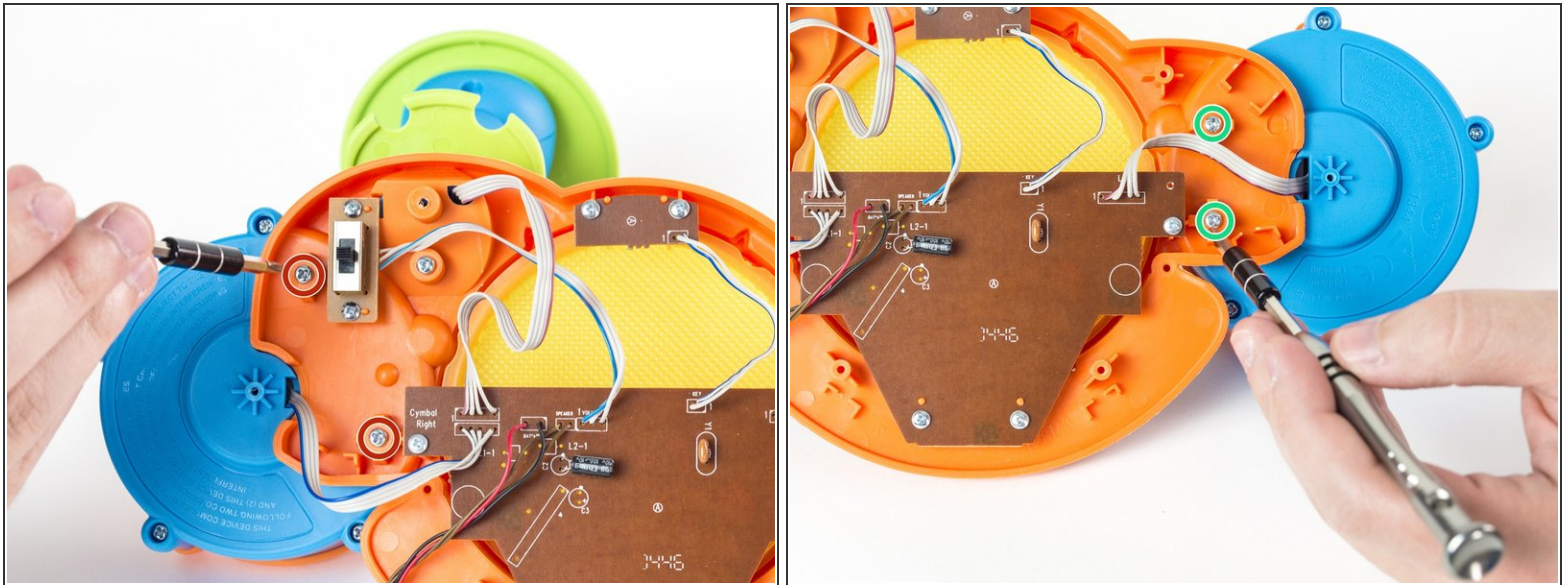
Step 6



- With your hands, separate the bottom panel from the drum set.

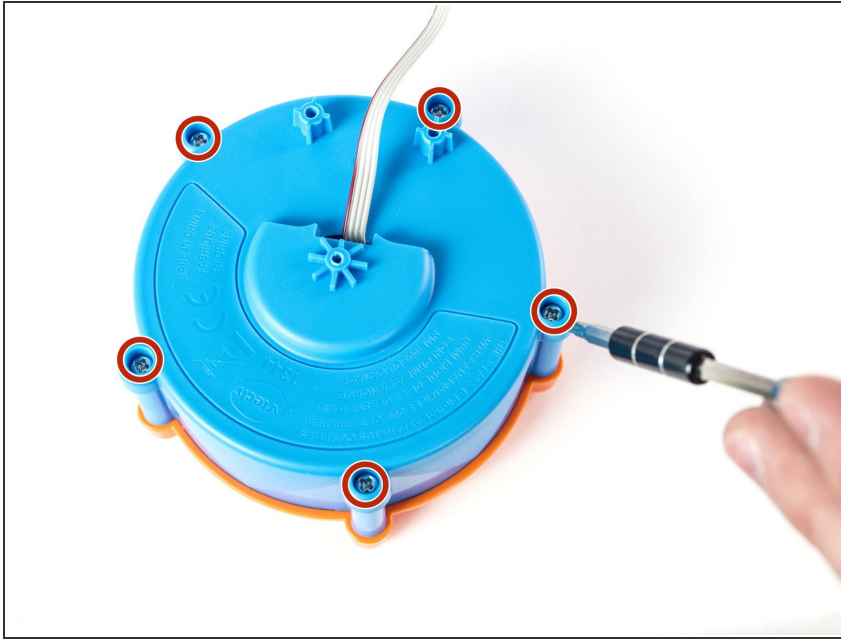
 When removing the bottom panel, be careful not to pull too hard in order to prevent damaging the connections from the motherboard to the speaker and power source.

Step 7 — White Drum Head



- To replace the white drum head on the cymbal side, use a Phillips #00 screwdriver to loosen and remove the two 8 mm screws.
 - To replace the white drum head on the side opposite of the cymbal, use a Phillips #00 screwdriver to loosen and remove the two 8 mm screws.
- ⚠ The blue drums will fall after the screws are loosened. Be sure to brace the blue drums in this step in order to prevent damage to the connection points between the blue drum components and the motherboard.

Step 8



- Loosen and remove the five 15 mm screws using a Phillips #2 screwdriver.

Step 9



- Using your hands, remove the orange rim and white drum head from the blue base.

Step 10



- Using your hands, pull apart the white drum head from the orange rim.

To reassemble your device, follow these instructions in reverse order.