



# Disassembling front of the Panasonic SA-PM17

Although its not likely that you'll have to replace the entire front of your device, this guide is a prerequisite for several other items you could replace.

Written By: NathanB



---

## INTRODUCTION

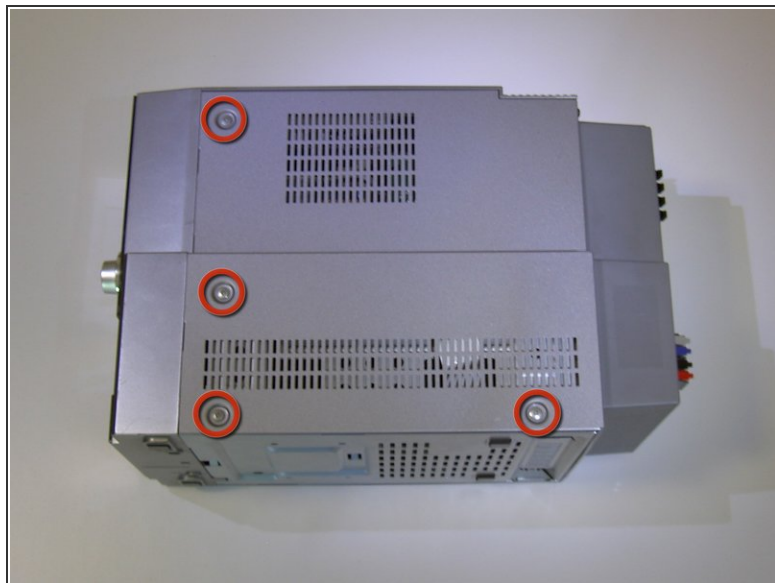
This guide will show you the quickest way to remove the front of the device so you can get to deeper parts of the device.

---

### TOOLS:

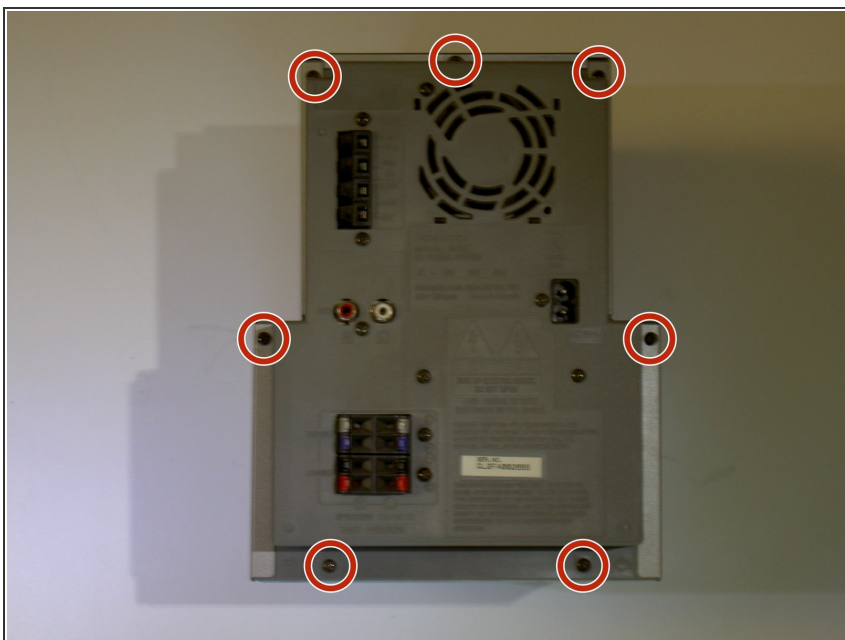
- [Tweezers](#) (1)
  - [Phillips #0 Screwdriver](#) (1)
-

## Step 1 — Disassembling front of the Panasonic SA-PM17



- Using a Phillips screwdriver, remove the eight 9.5 mm screws on the left and right sides of the device.

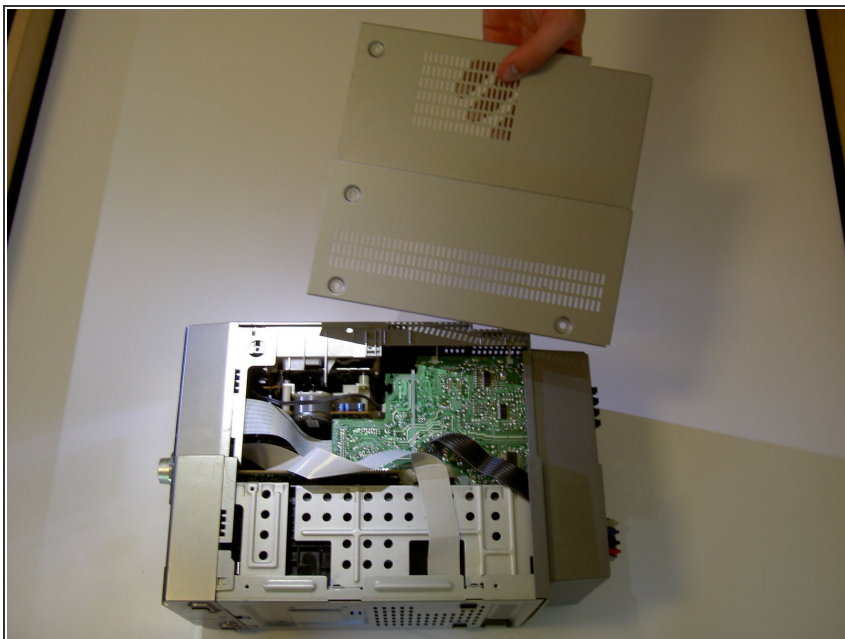
## Step 2



- Remove these seven 11.5 mm screws and place aside.

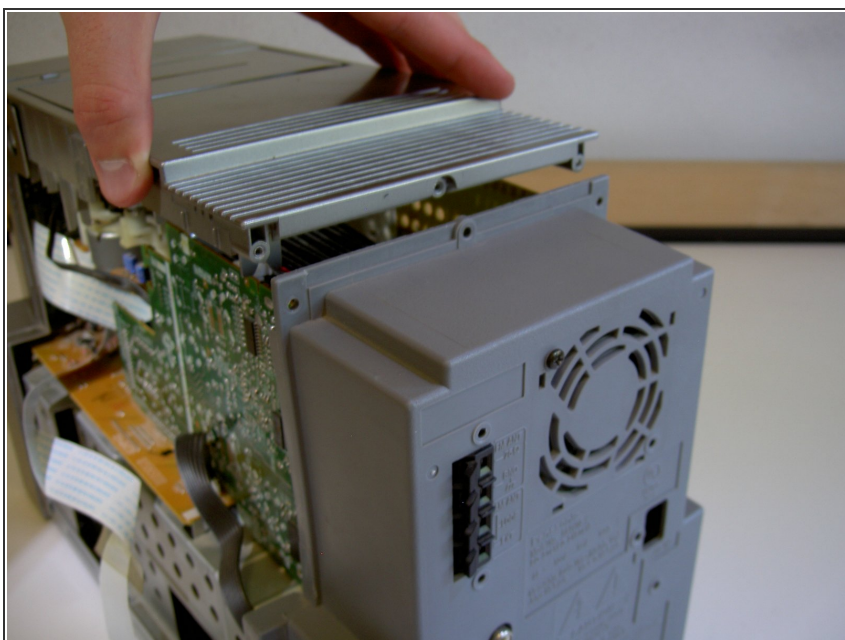


### Step 3



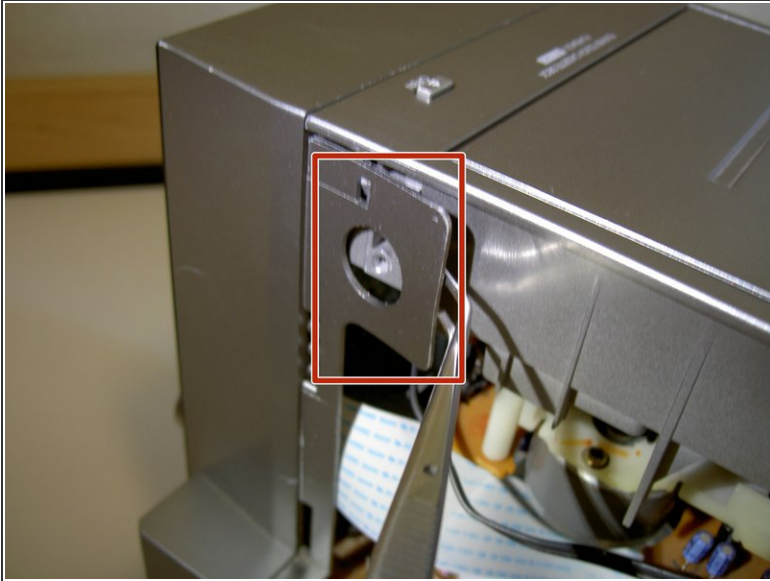
- Lift the right side off of the device and place aside.
- Repeat for left side.

### Step 4



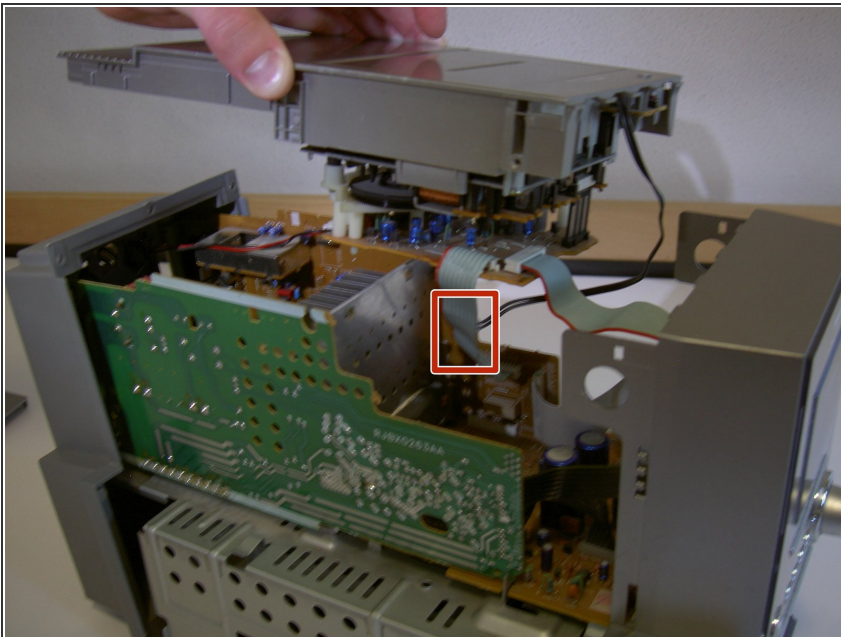
- Lift the top gently but firmly from the back of the device. Allow it to rest on the back without reattaching it.
- ⚠ Do not pull the top too far as there are wires attached to it.

## Step 5



- Gently lift up on the indicated tabs to disengage them from the hooks holding them in place.

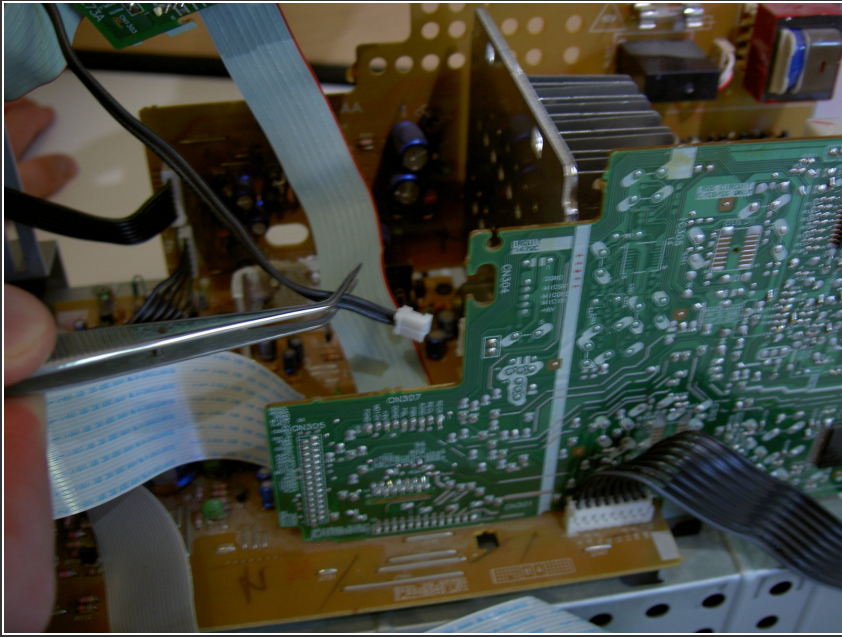
## Step 6



- Lift up the top while firmly sliding it towards the back of the device.
- ⚠ Do not lift the top up too high as there are cords that need to be detached before the top can be removed.
- The next step is a zoom-in of the indicated area.

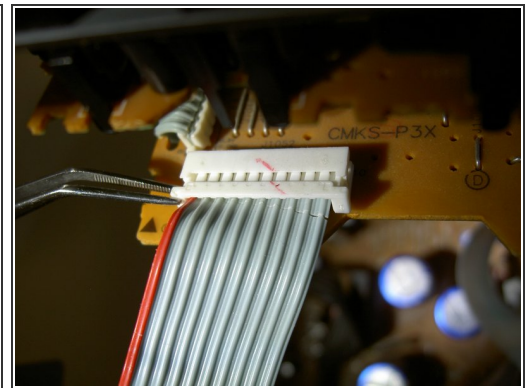
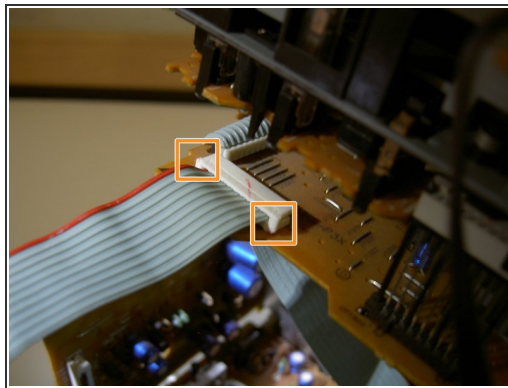
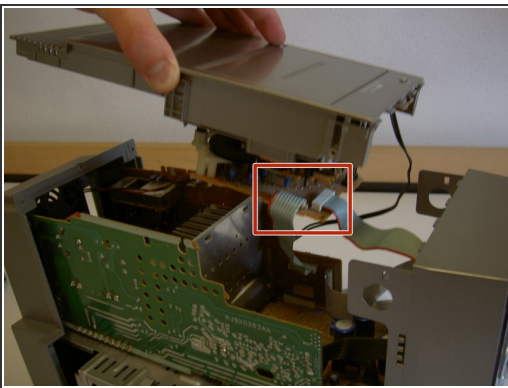


## Step 7



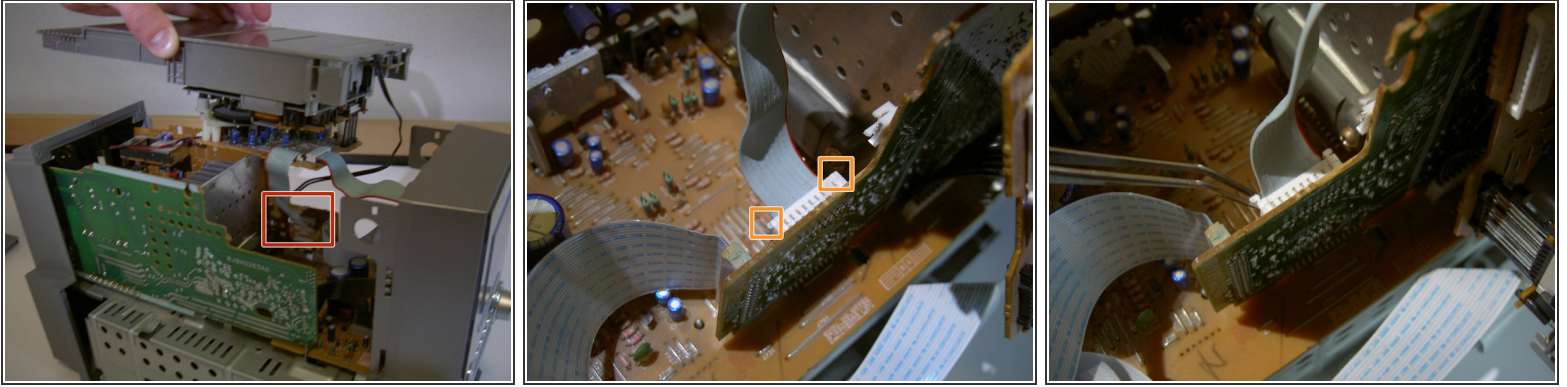
- Using forceps or fingers, remove the small black wire indicated.
- Grip the wire near its base and pull gently but firmly until it pops out of the slot.

## Step 8



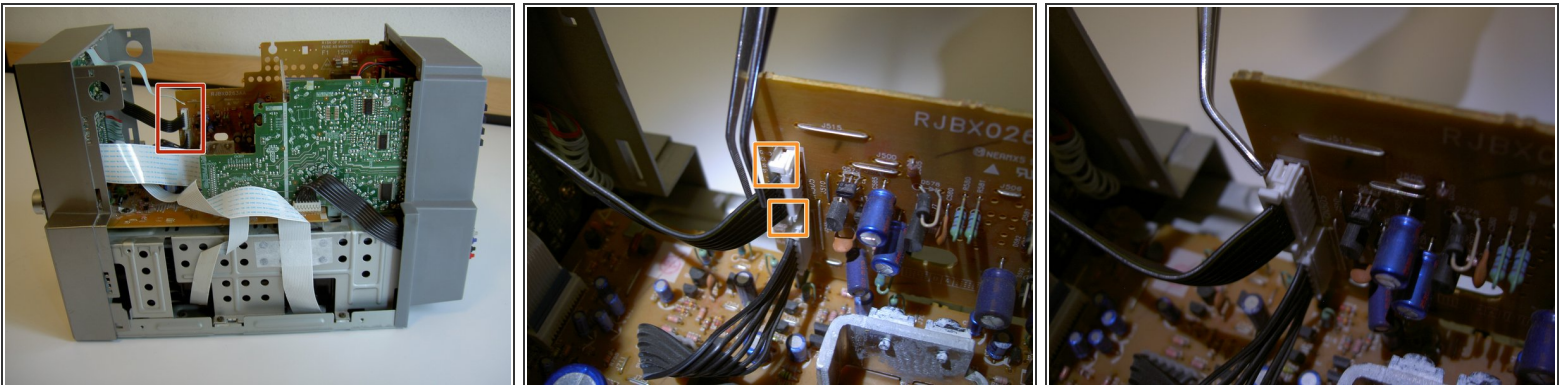
- This step deals with the indicated area of the device.
- Using fingers or tweezers, lift the indicated tabs out until the cord's restraint looks like the final picture.
- Gently pull on the cord near its base until it comes free of the restraint.

## Step 9



- This step deals with the indicated area of the device.
- Lift the indicated tabs out until the restraint looks like the final picture.
- Gently pull on the cord until it comes free of the attachment.
- The top section of the device should now be free of the body. Place it aside in a safe place.

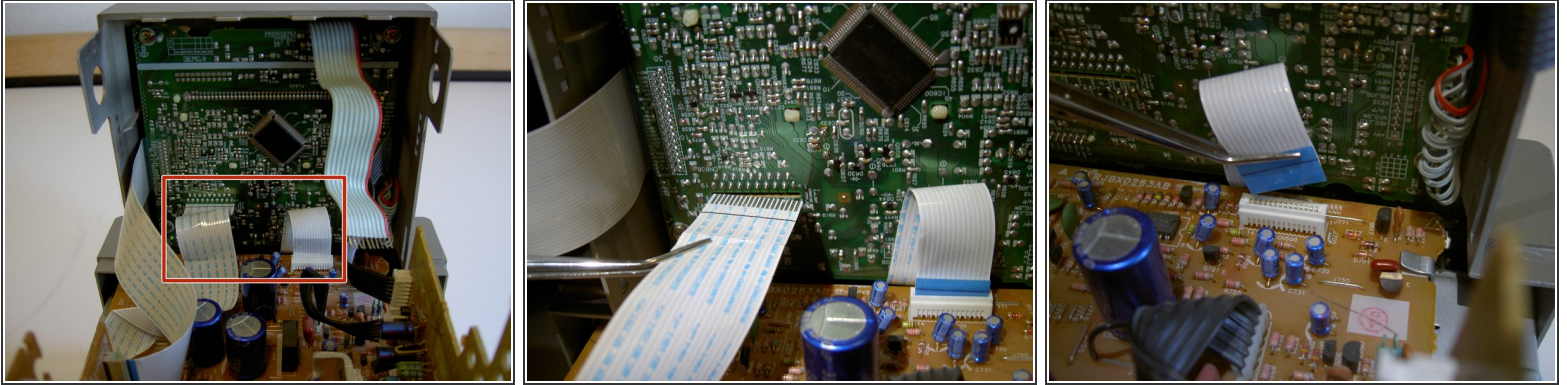
## Step 10



- This step deals with the indicated portion of the the device.
- Lift the indicated tabs out until they look like the final picture.
- Gently pull on the cord until it comes free of its restraint.

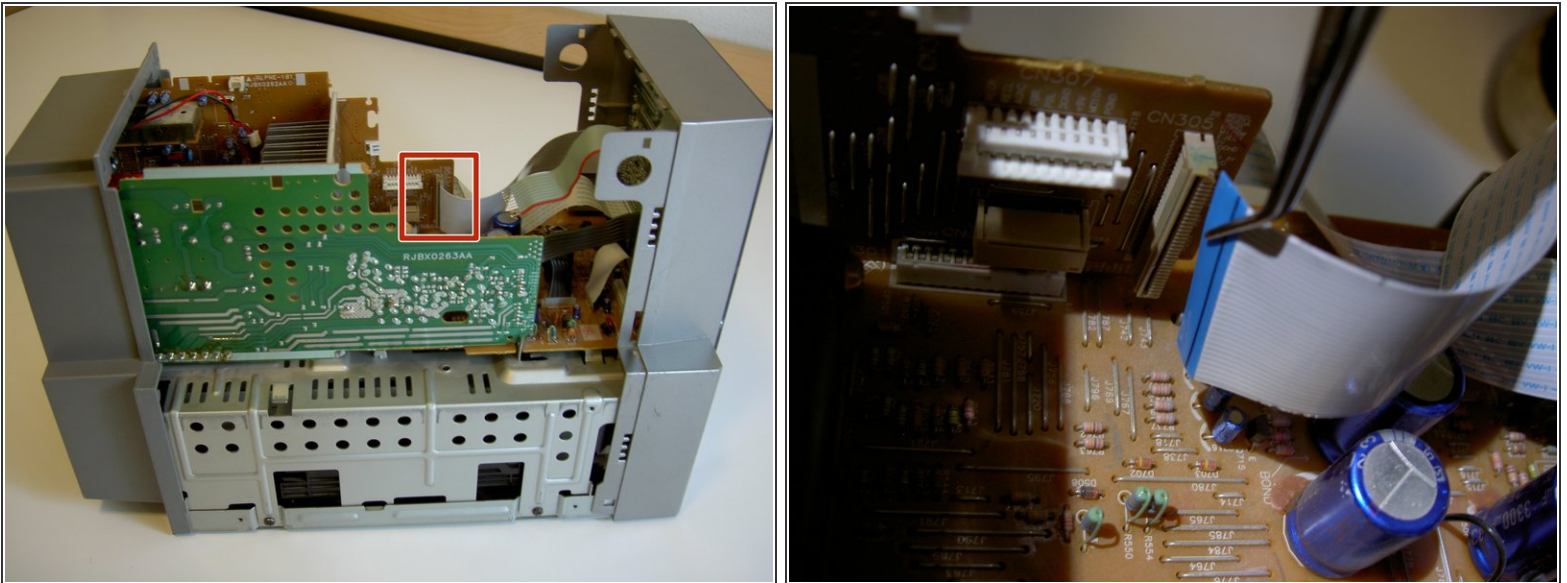


## Step 11



- This step deals with the indicated area of the device.
- Neither of the indicated cords have restraints on them like the previous ones. Use tweezers or fingers to pull firmly on the base of each cord until it comes free.

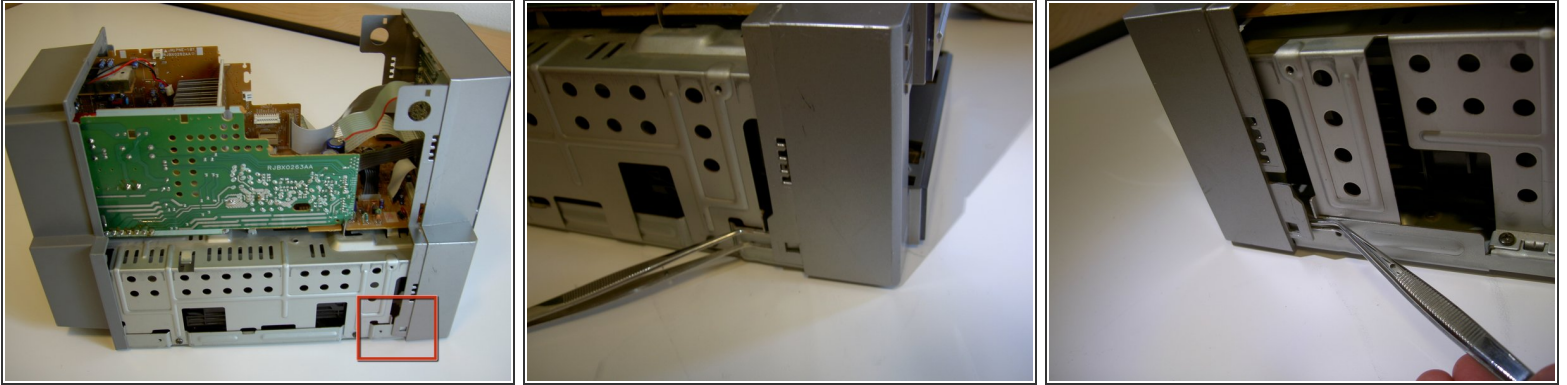
## Step 12



- This step deals with the indicated area of the device.
- Use tweezers or fingers and firmly pull straight out on the cord until it comes free.

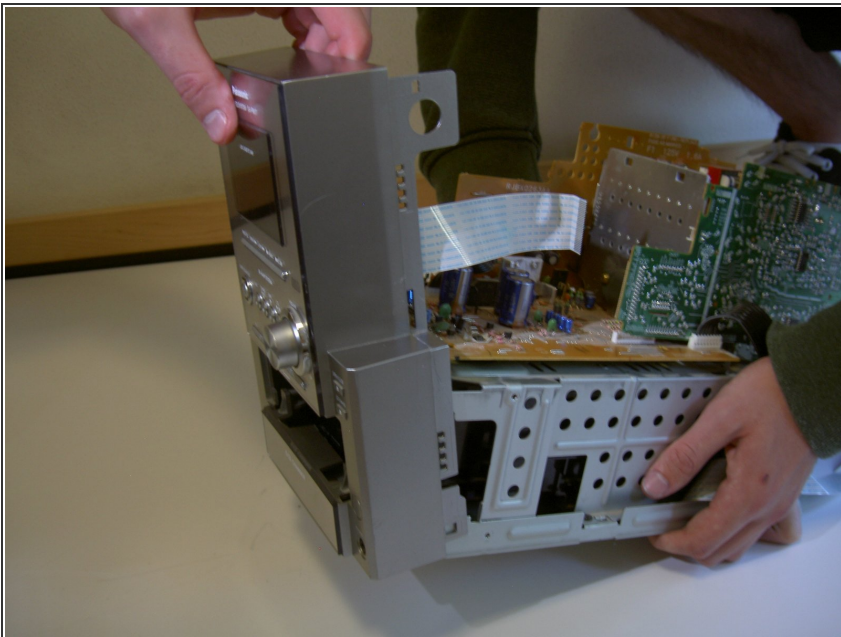


## Step 13



- This step deals with the indicated area of the device.
- Using tweezers or fingers, lift gently on the tab indicated to free the front from the body of the device.
- Rotate device 180 degrees and repeat for other side.
- Rotate the front slightly forward to keep the tabs from re-engaging on their hooks.

## Step 14



- Wiggle the front gently while pulling it forward until it comes free of the body of the device.

To reassemble your device, follow these instructions in reverse order.