



AYL SoundFit Motherboard Replacement

This guide will help you replace the AYL...

Written By: john



INTRODUCTION

This guide will help you replace the AYL SoundFit motherboard. If you're experiencing power problems, audio distortion, or connectivity glitches, a motherboard replacement may be necessary.

The motherboard is an essential component that controls the core functions of the AYL SoundFit speaker. It manages audio processing, power, and connectivity. Replacing the motherboard can resolve a variety of issues that make the speaker non-functional.

This motherboard replacement process involves soldering, which requires skill and caution. If you're not experienced with soldering, we highly recommend referring to the guide "[Solder and Desolder Connections](#) " before proceeding with this motherboard replacement.

Now that you understand the importance of the motherboard in your AYL SoundFit speaker and the caution regarding soldering, let's proceed to step 1 and get started on resolving your issues.



TOOLS:

[Heavy-Duty Spudger](#) (1)

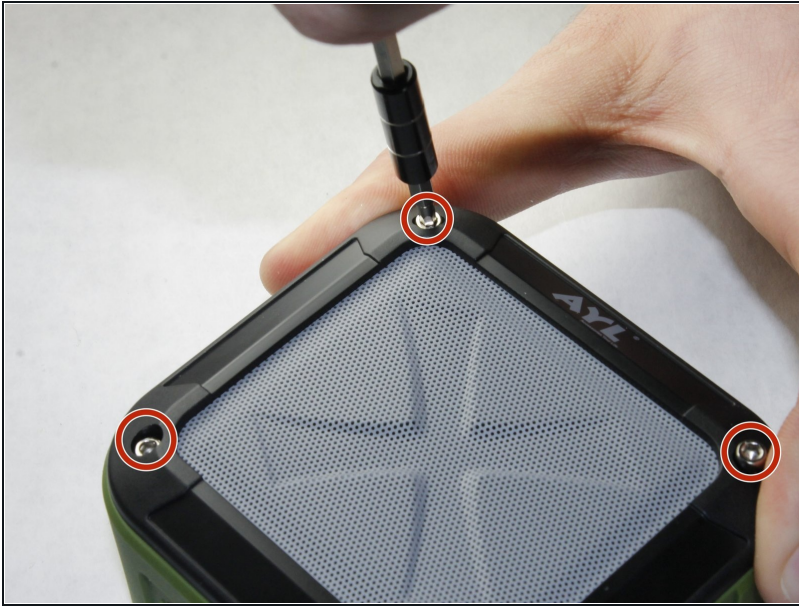
[Phillips #0 Screwdriver](#) (1)

[Lead-Free Solder](#) (1)

[Soldering Workstation](#) (1)

[2.5 mm Hex Bit](#) (1)

Step 1 — Motherboard



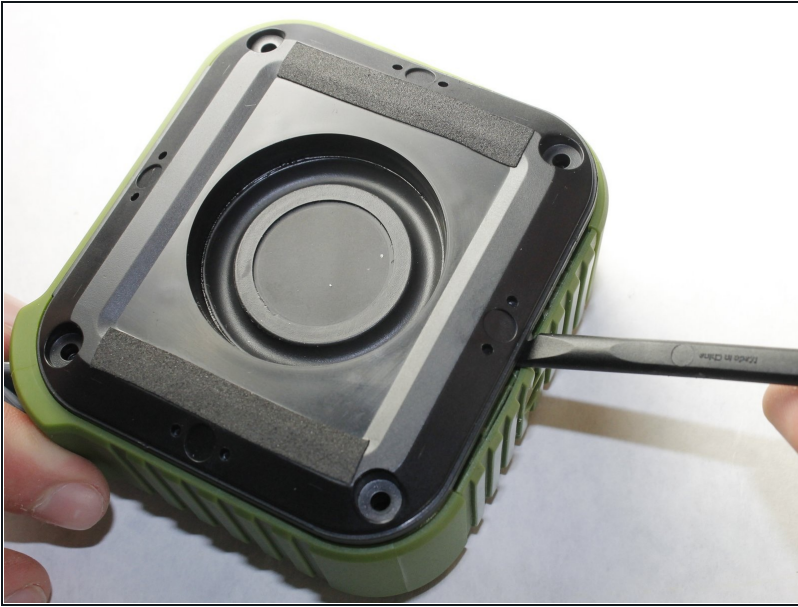
- Unscrew the four hex screws on the top of the device using a 2.5mm hex screwdriver.

Step 2



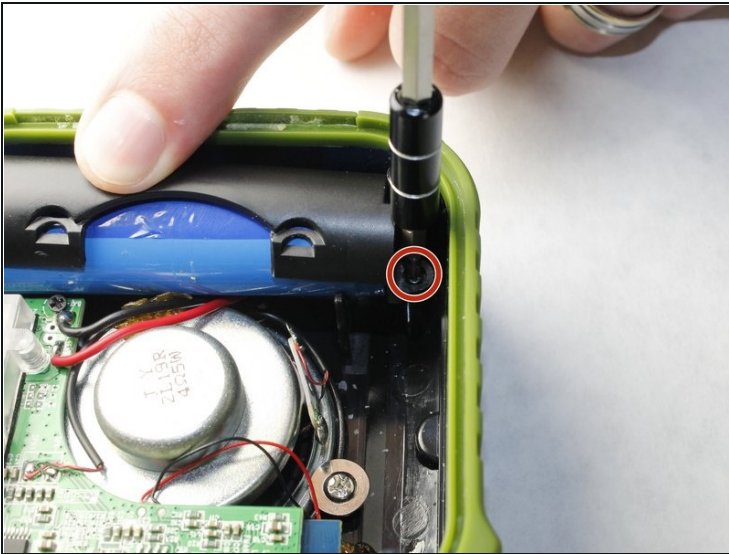
- Place a spudger between the black plastic cover and the green case.
- Remove the black cover away from the main casing and remove the cover.

Step 3



- Place the spudger tool between the black housing, which contains the woofer, and the outer rubber casing.
- Remove the housing away from the body to reveal the motherboard, speaker, and battery.

Step 4



⚠ Remove the two Phillips screws which hold its battery casing on the housing using a PH00 Phillips screwdriver.

- Remove the battery case to reveal the battery.

Step 5



- Using a soldering iron, heat up and remove both the positive and negative battery contacts from the motherboard.

Step 6



⚠ Remove all three Phillips screws which holds the motherboard to the base using a PH00 Phillips screwdriver.

- The motherboard can now be wiggled free from the base.

To reassemble your device, follow these instructions in reverse order.