



Canon EOS 30 Remote Control Socket Replacement

The Remote Control Socket is not difficult to...

Written By: Antonia



INTRODUCTION

The Remote Control Socket is not difficult to access. However, it's connections are soldered, so it will be difficult to remove.

TOOLS:

Phillips #00 Screwdriver (1)

Step 1 — Front Panel



- Remove the two 4.8 mm black screws above the lens on the front of the camera.

Step 2



- Remove the 4.3 mm black screw under the lens ring, and the 4.8 mm black screw under the camera.

Step 3



- Remove the 4.8 mm black screw on the left side of the camera.

Step 4



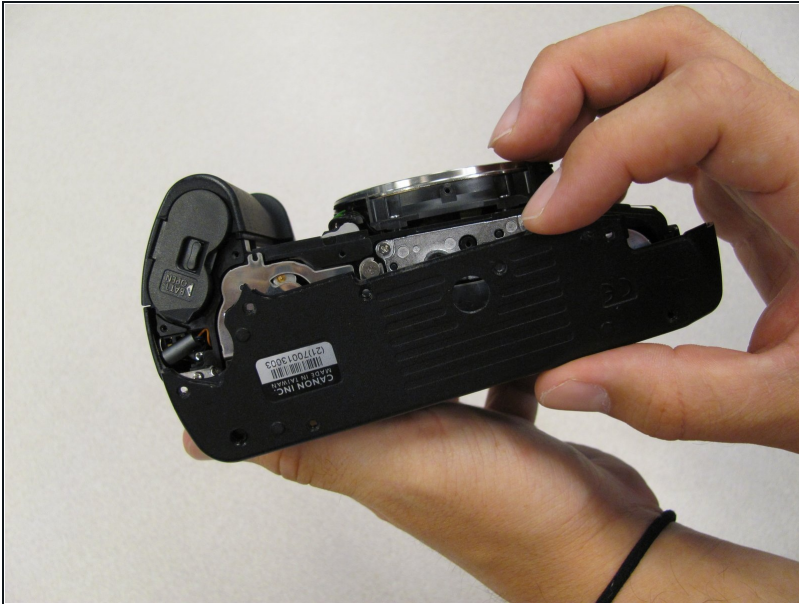
- Remove the front panel by lifting it away from the camera's body.

Step 5 — Bottom Panel



- Remove seven 4.25 mm black screws on the bottom panel.

Step 6



- Remove the bottom panel.

Step 7 — Side Panel With Remote Control Socket



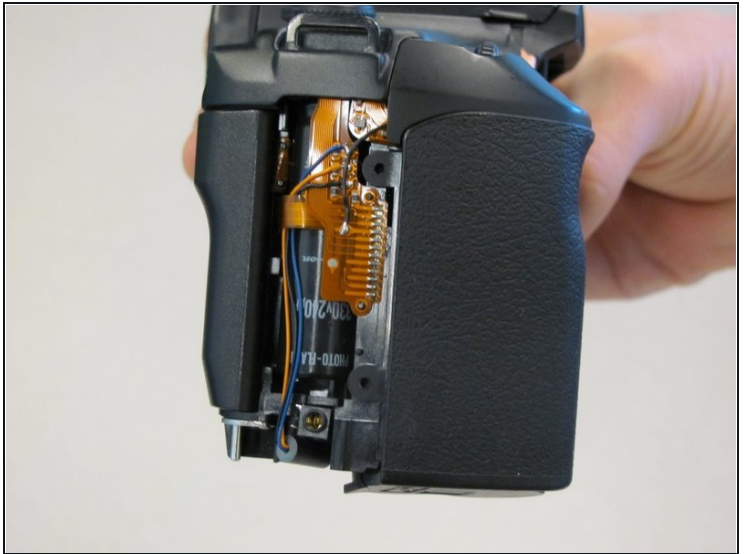
- Remove two 6.5 mm black screws from the panel.

Step 8



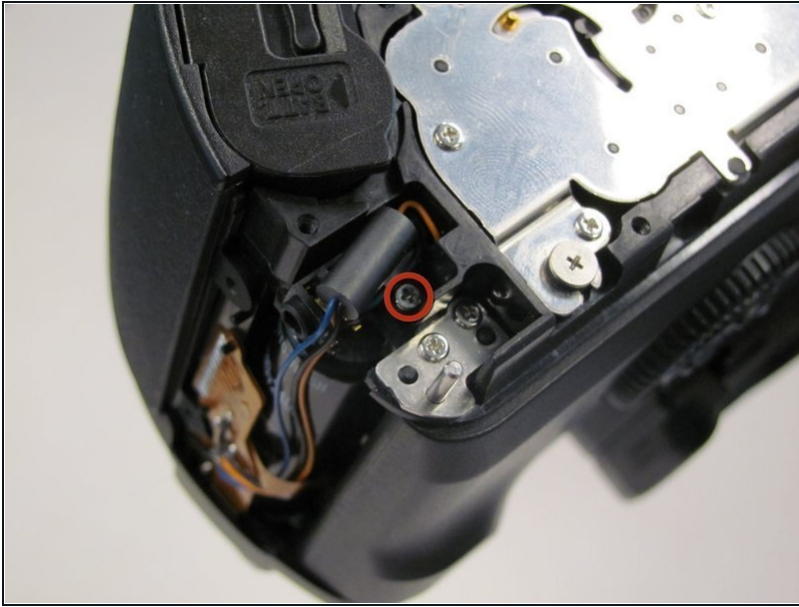
- Remove the plastic remote control socket cap by pulling it straight out.

Step 9



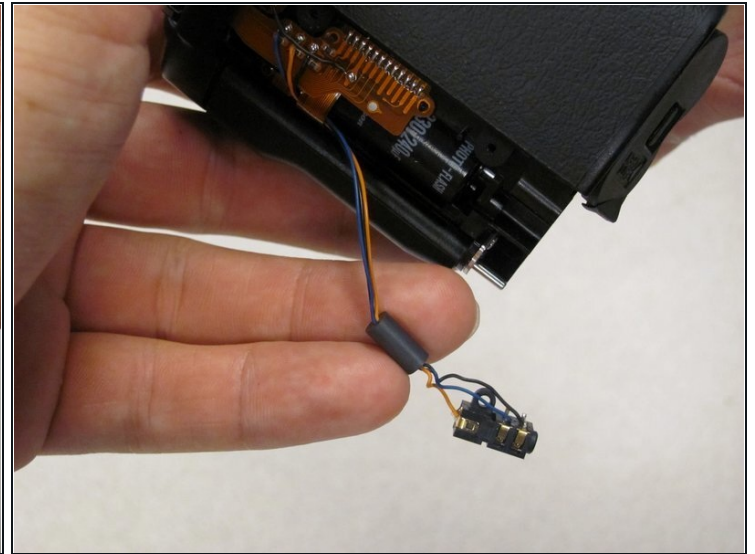
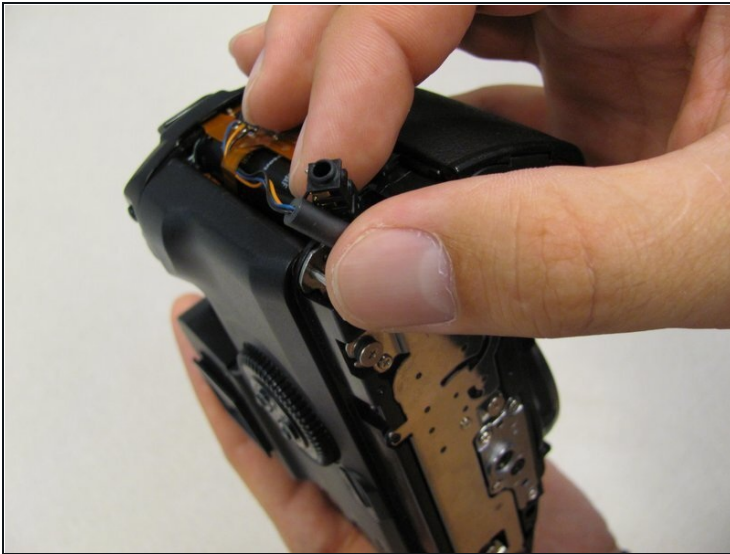
- Slide the panel toward the bottom of the camera to remove.

Step 10



- Remove the single 4.8 silver screw from the control socket.

Step 11



① The control socket is now secure by three wires.

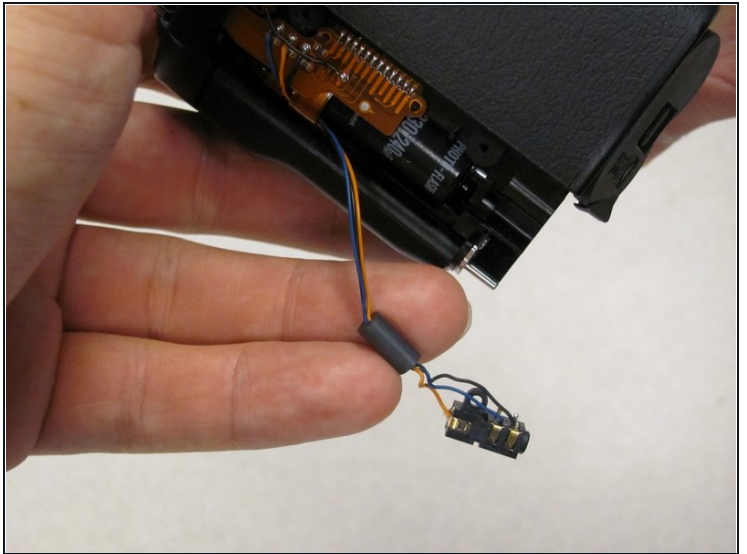
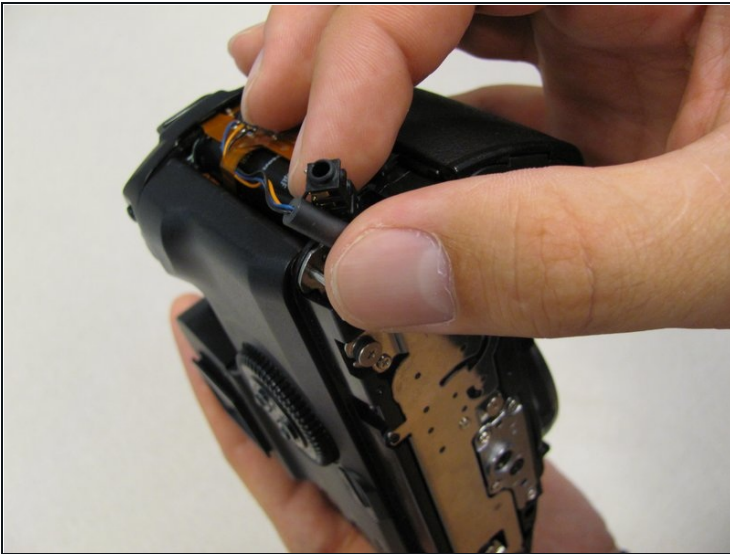
- [Desolder](#) connections to replace the remote control socket.

Step 12 — Remote Control Socket



- Remove one 4.8 mm silver screw securing Remote Control Socket to camera.

Step 13



- Remote Control Socket is now secured by 3 wires.
- Desolder connections to replace Remote Control Socket.

To reassemble your device, follow these instructions in reverse order.