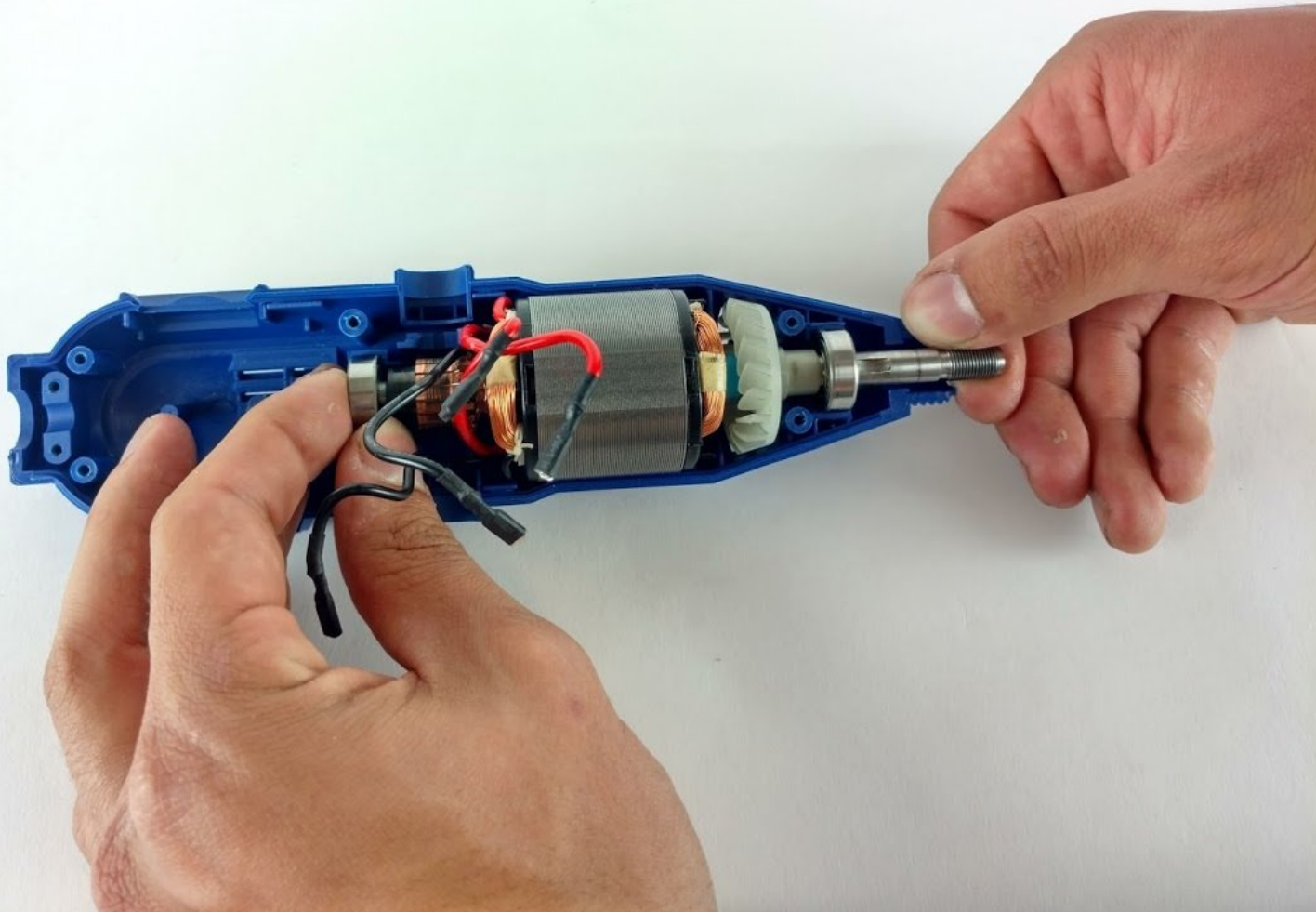




# Wen 2307 Motor Replacement

This guide explains how to replace the motor in the Wen 2307 rotary tool.

Written By: Joshua Bowery



---

## INTRODUCTION

If the device doesn't rotate, the motor could be bad. Use this guide to replace it.

---

### TOOLS:

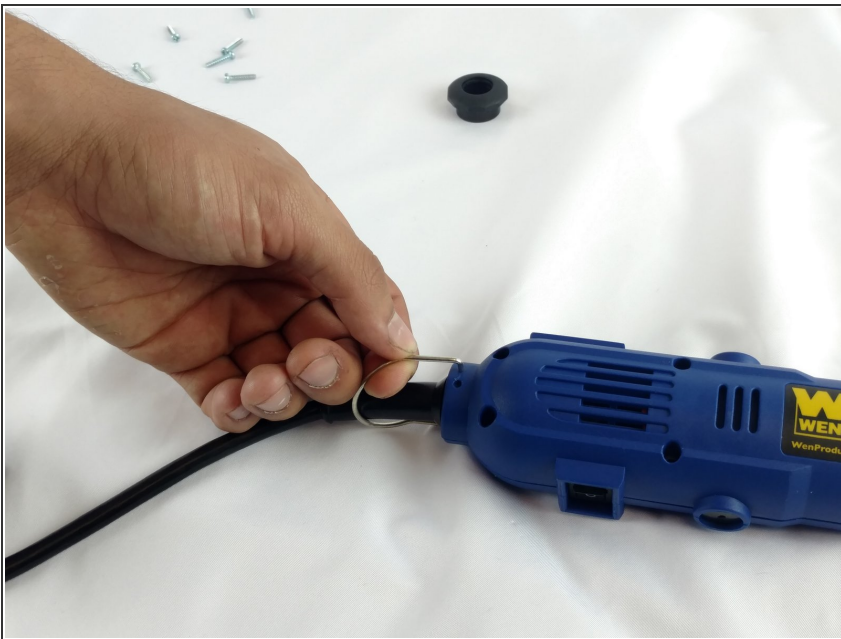
- [Flathead 3/32" or 2.5 mm Screwdriver](#) (1)
  - [Phillips #2 Screwdriver](#) (1)
-

## Step 1 — Front Panel



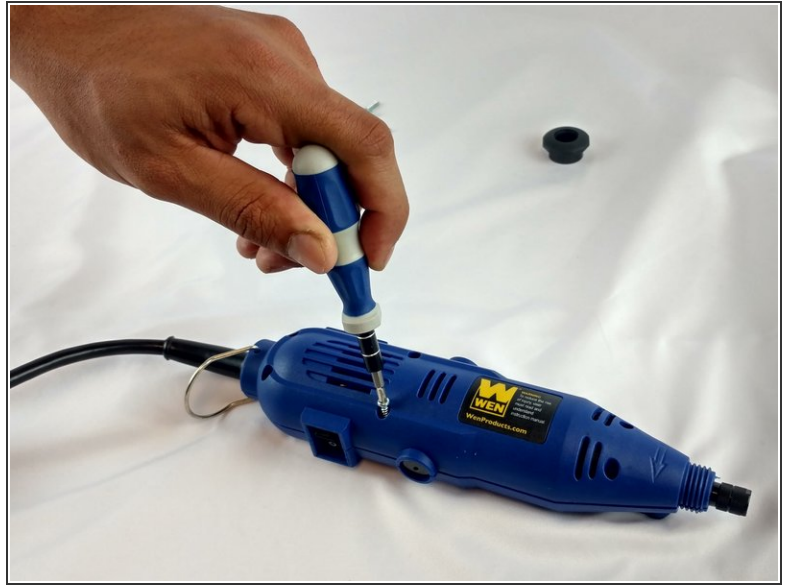
- Unscrew the locking sleeve.

## Step 2



- Remove the hanging clip.

### Step 3



- Unscrew the six 8mm PH2 screws.

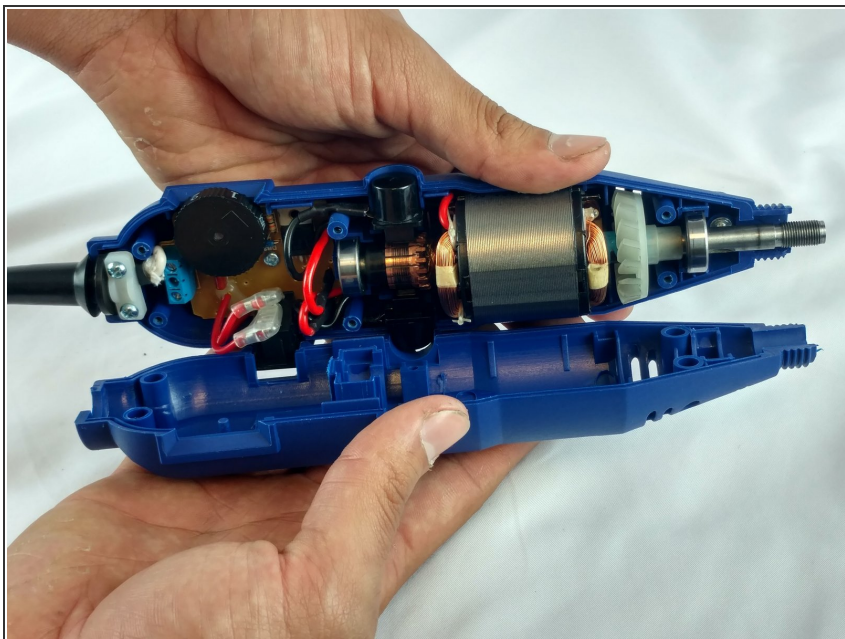
### Step 4



- While pressing the spindle lock button, unscrew the collet nut and remove it along with the brass collet.

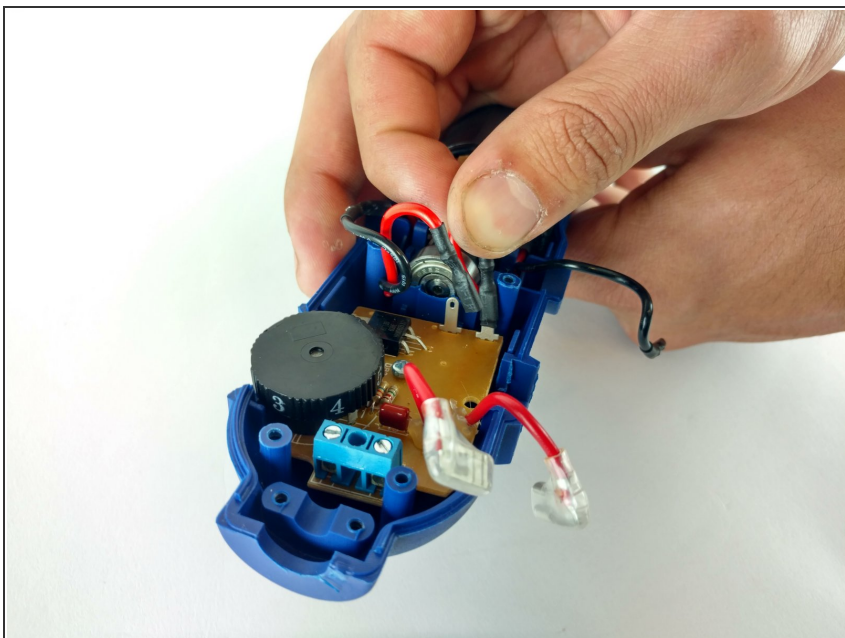


## Step 5



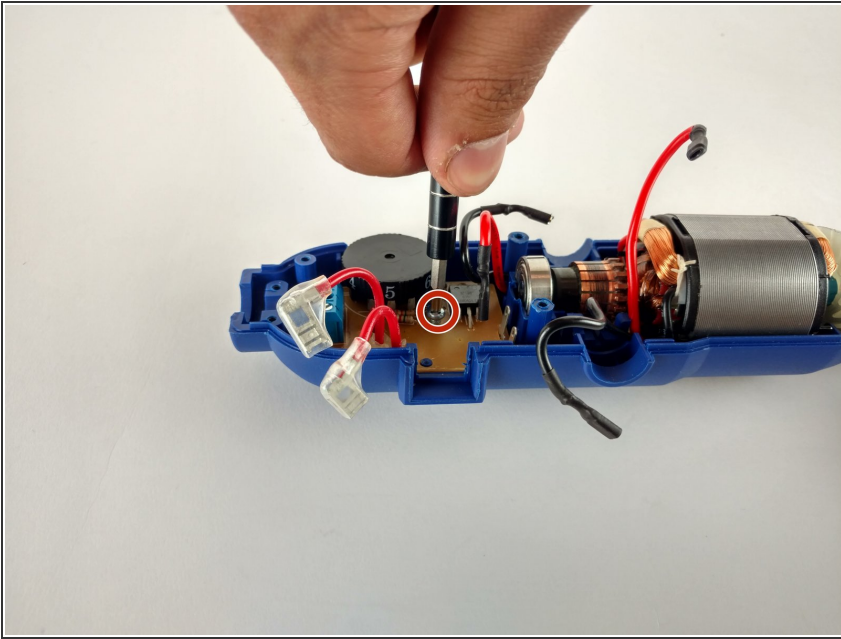
- To remove the front panel, pry the device apart while holding the device with the other hand.
- ⓘ The front panel should come out easily.

## Step 6 — Speed Adjustment Assembly



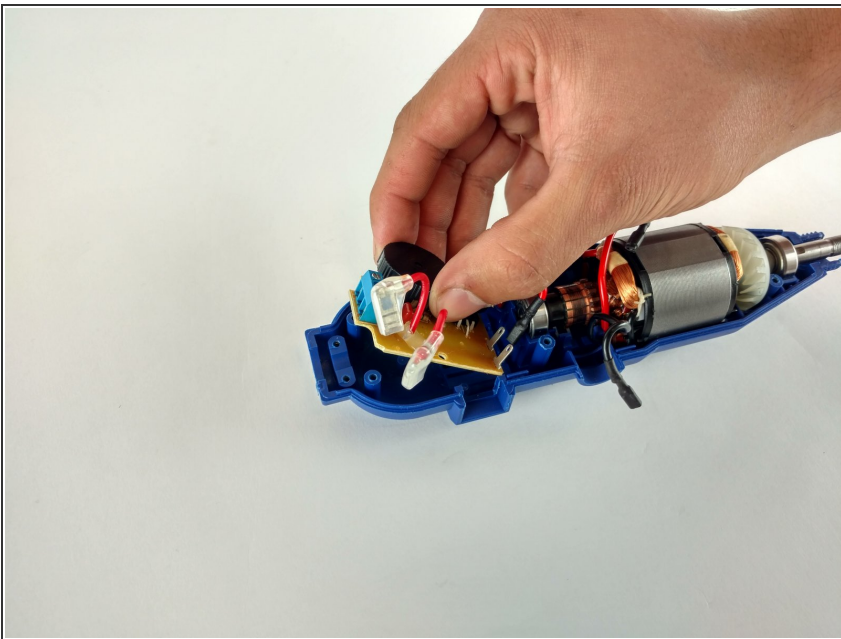
- Remove the connected wiring from the circuit board.

## Step 7



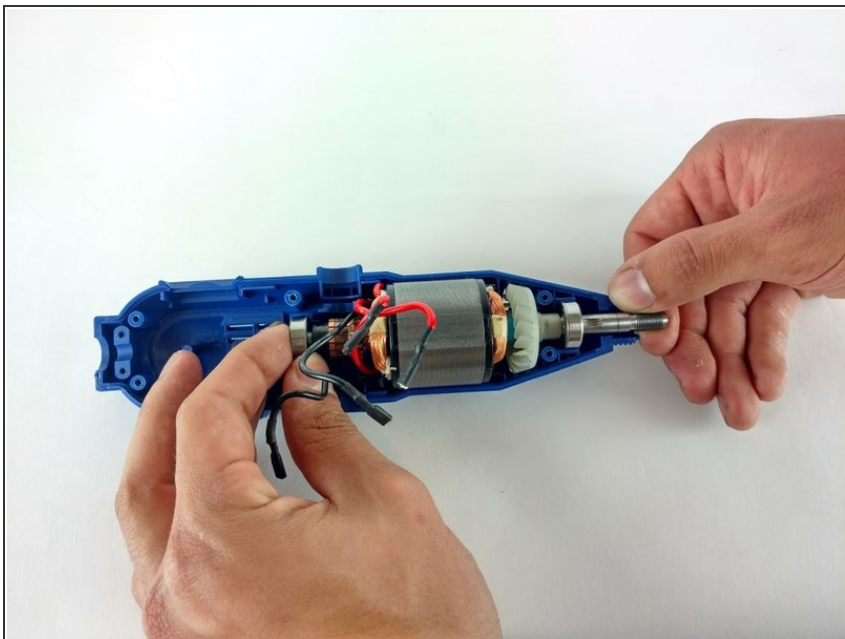
- Remove the single 4mm screw retaining the circuit board.

## Step 8



- Gently pry the circuit board from the back piece.

## Step 9 — Motor



- Gently pull motor assembly out of the panel.

## Step 10



- ❗ Motor separates into two pieces.

To reassemble your device, follow these instructions in reverse order.