



# Samsung Eternity Camera Replacement

You will need to find a clean area to work in...

Written By: Michelle Haddock



# INTRODUCTION

You will need to find a clean area to work in and have the necessary tools. Follow this guide to gain access to your cellphone's camera module.

---

## **TOOLS:**

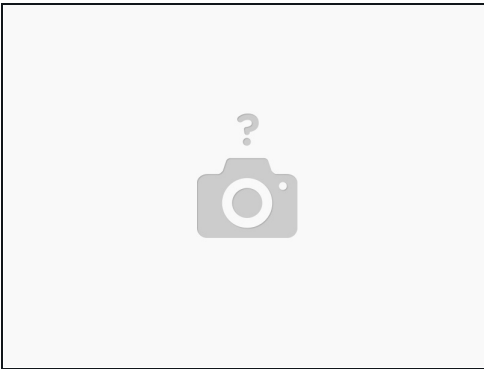
[Phillips #00 Screwdriver](#) (1)

[Spudger](#) (1)

[Tweezers](#) (1)

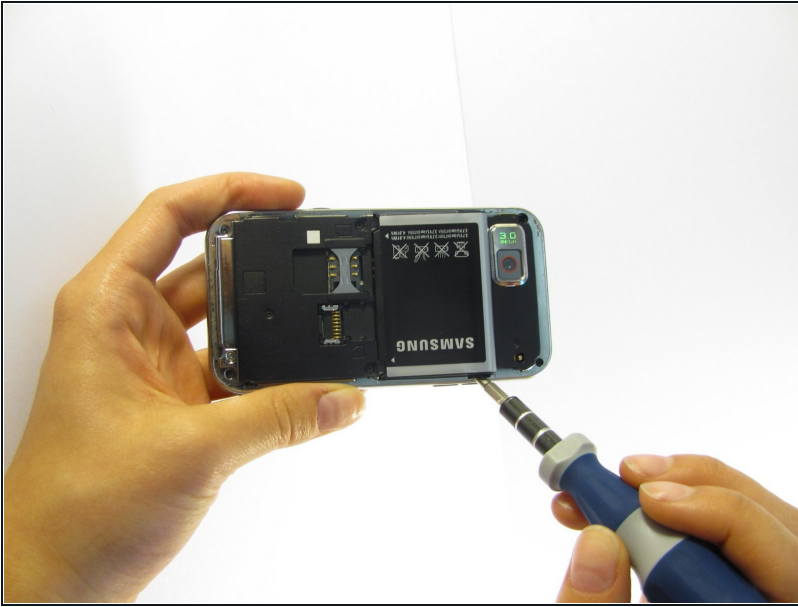
---

## Step 1 — Back Case



- Remove the back battery cover.

## Step 2



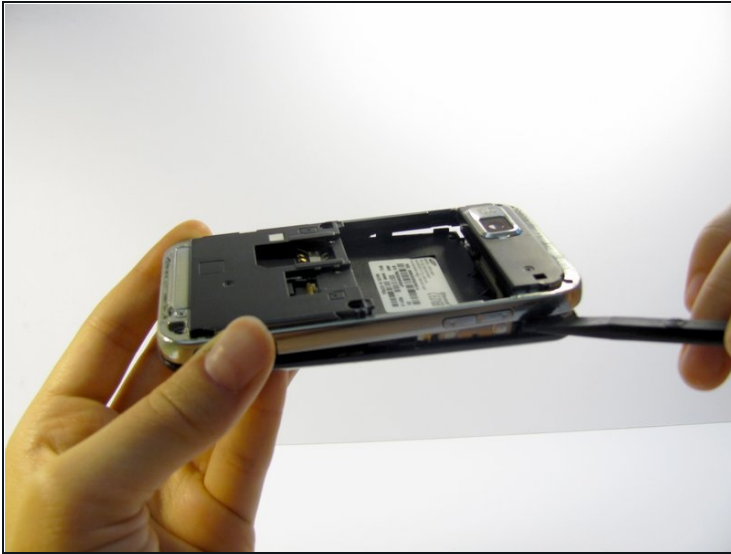
- Using the Phillips #00 screwdriver, remove the phone's battery.

## Step 3



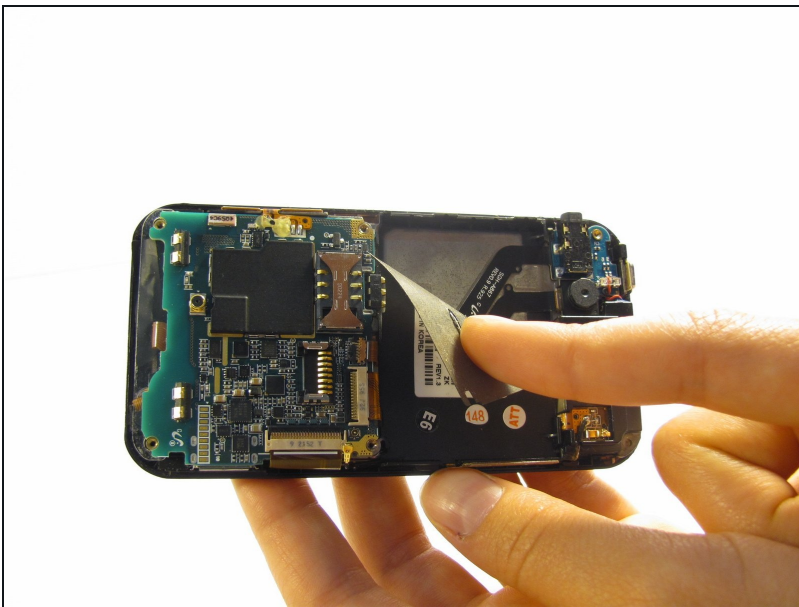
- Remove six (4.28 x 1.25)mm screws using the Phillips #00 screwdriver

## Step 4



- Continuing to use the Phillips #00 screwdriver, gently pry the silver plastic back plate from the body of the phone.

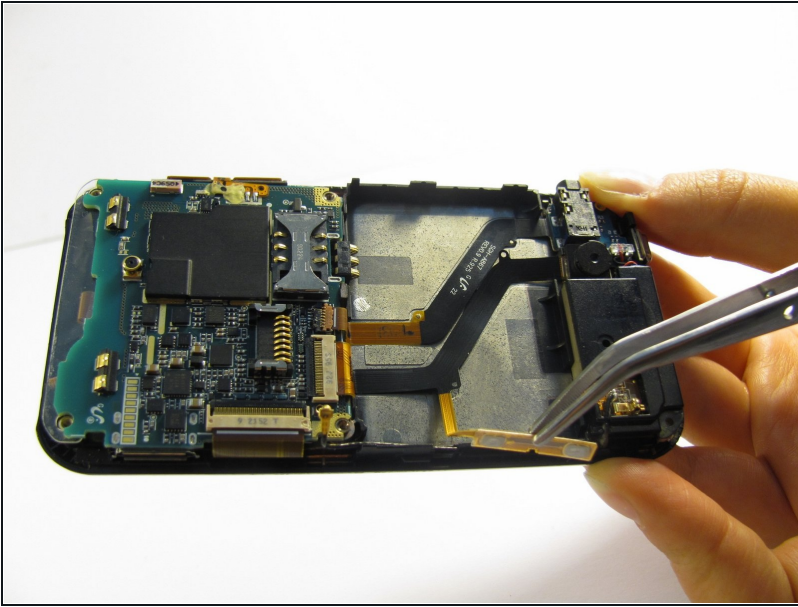
## Step 5 — Camera



- Peel off the Identification sticker.

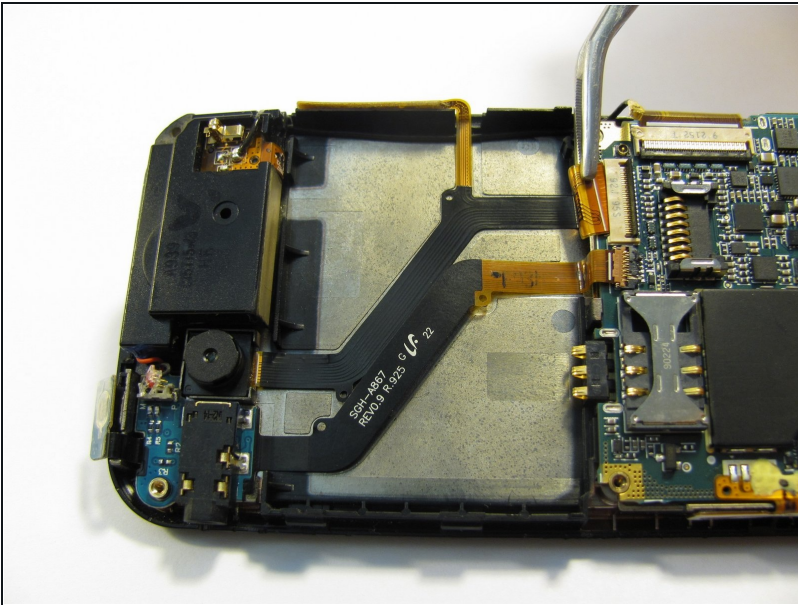


## Step 6



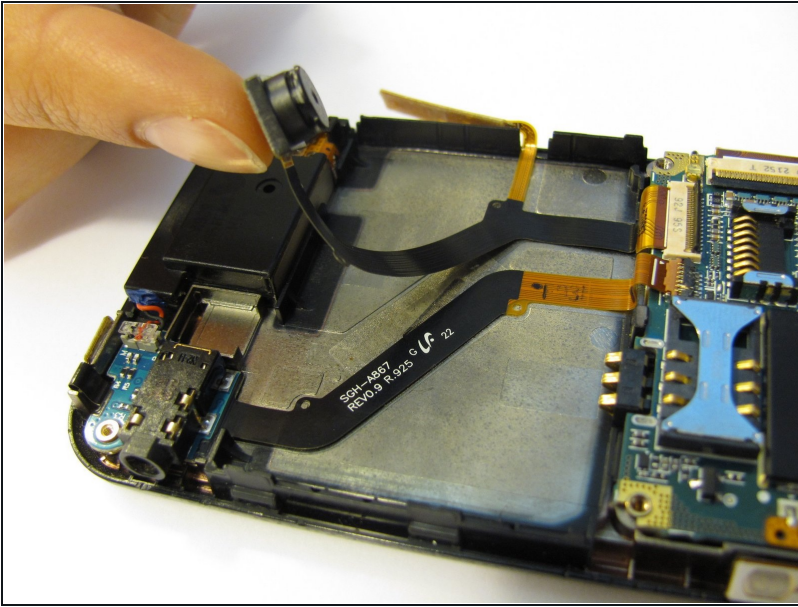
- Peel the button sensor on the side of the motherboard off of the case.

## Step 7



- Pop the black hinged-release lever toward its ribbon, then slide the ribbon out.

## Step 8



- Peel up the camera attachment.

## Step 9



- You will now be able to replace the Camera component with a new part.

---

To reassemble your device, follow these instructions in reverse order.