

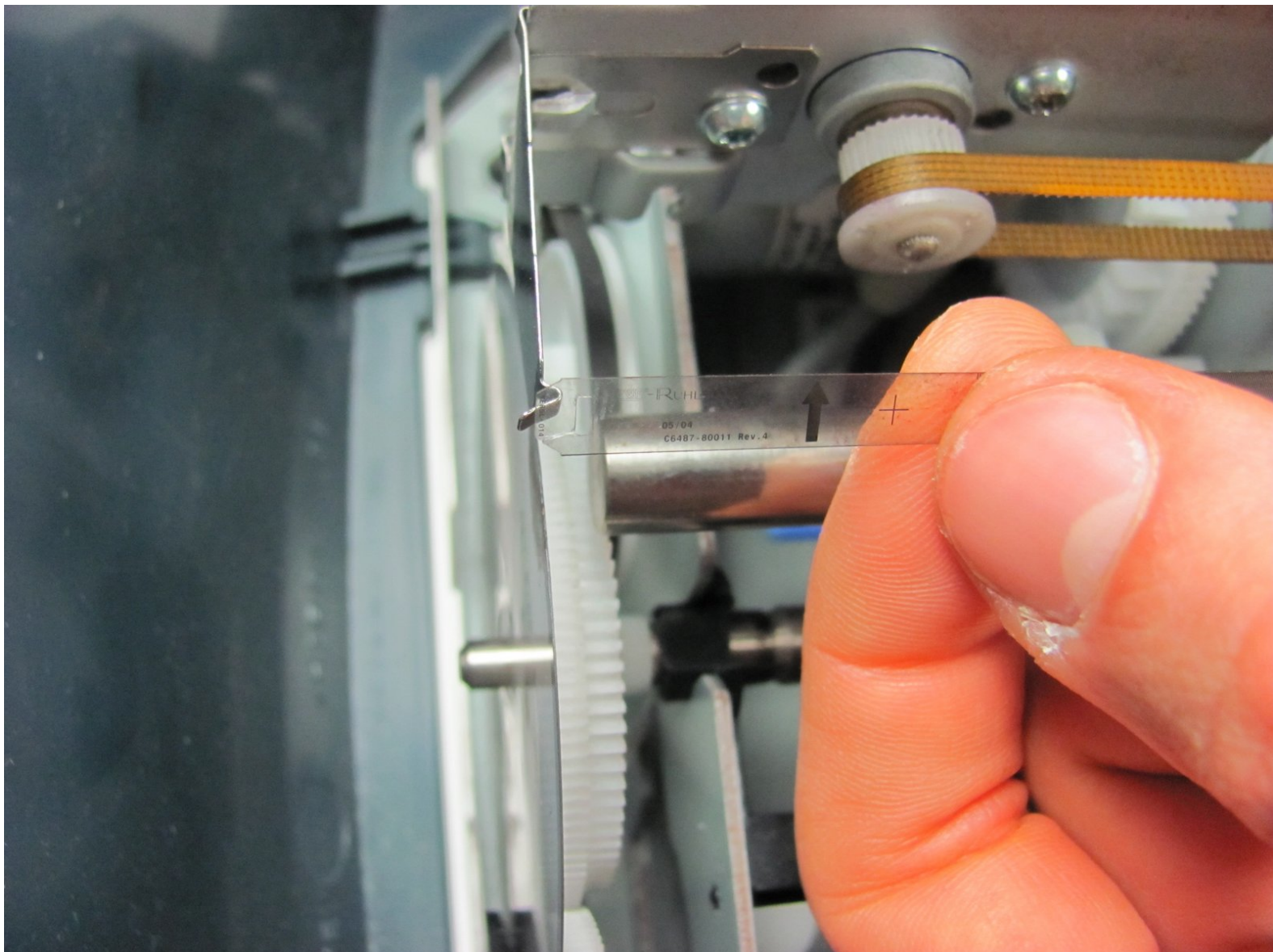


# HP PSC 2410 Photosmart All In One Printer

## Encoder Strip Replacement

Replace the encoder strip of your HP PSC 2410 Photosmart All In One Printer.

Written By: Jeremy Mahrt



---

## INTRODUCTION

Replace the encoder strip of your HP PSC 2410 Photosmart All In One Printer.

---



### TOOLS:

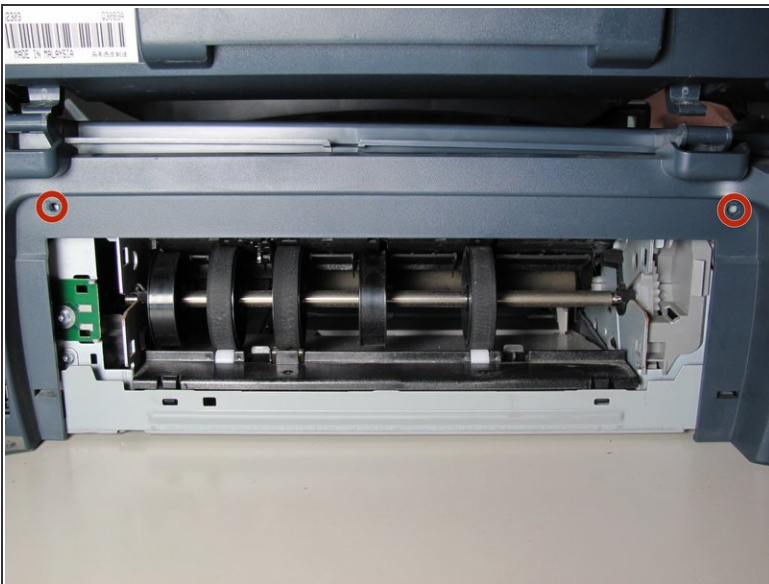
- [T10 Torx Security Bit Screwdriver](#) (1)
-

## Step 1 — Remove Back Panel



- Remove the back panel by inserting your fingers into the indentations next to the tabs. Press the tabs inward towards each other while pulling the back panel toward you.

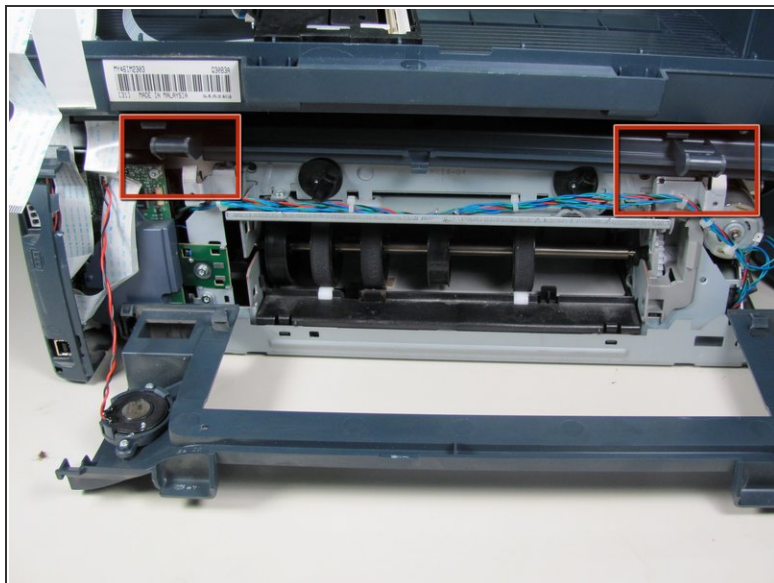
## Step 2 — Remove Inner Back Pannel



- Using the T10 Torx Security Bit Screwdriver, unscrew the screws on the upper left and right corners of the inner panel to remove the inner back panel.

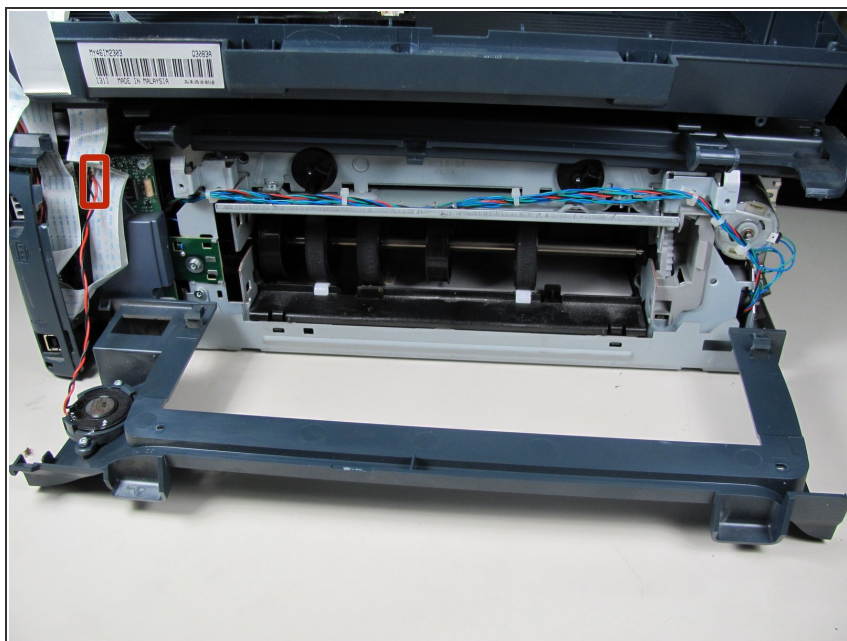


### Step 3 — Remove Upper Portion



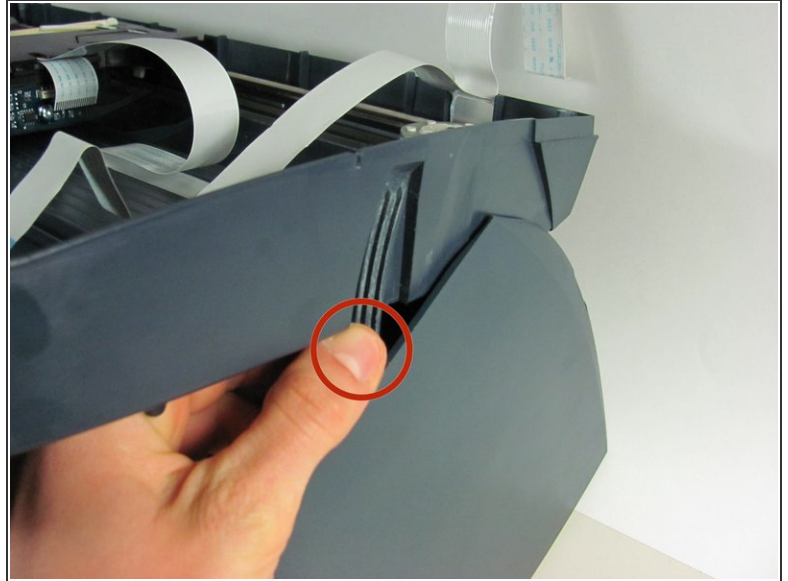
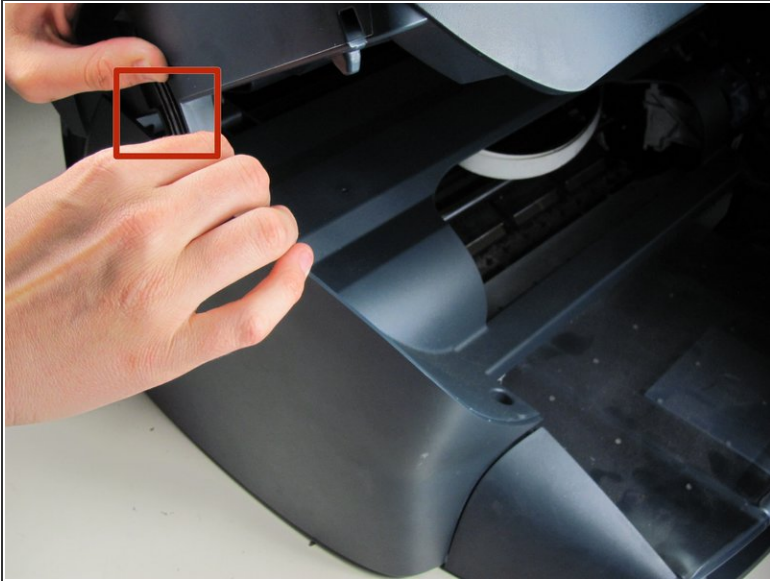
- Press down on the two plastic hinges to remove the upper portion of printer.

### Step 4 — Unplug Speaker Wire



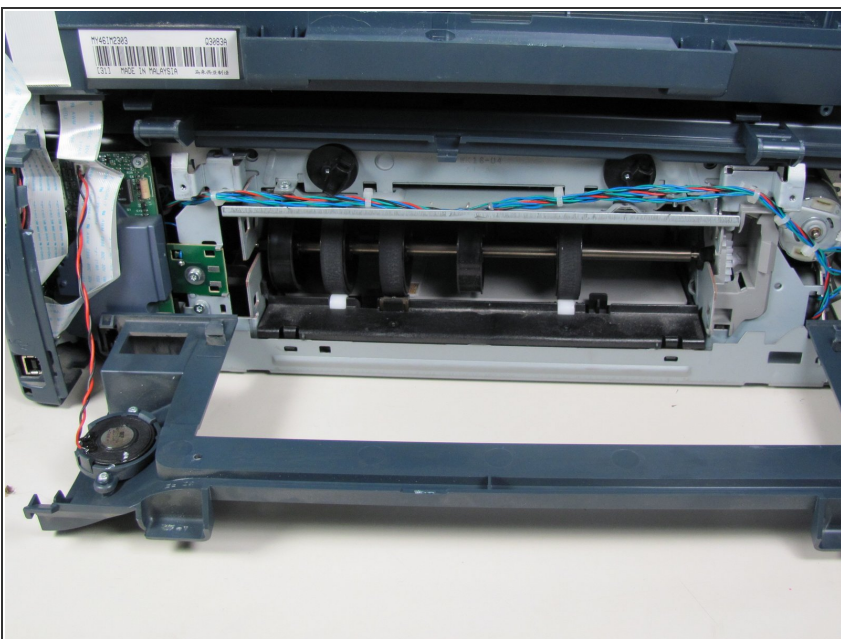
- Grasp the plastic plug on the end of the speaker wire, then gently pull the plug away from the printer until the wire is removed.

## Step 5 — Removing Scanner Tray



- Rotate the printer so the paper tray is facing towards you.
- Gently lift the scanner tray up and away from the printer.
- Press the gray plastic tabs inward to release the tabs from the printer.

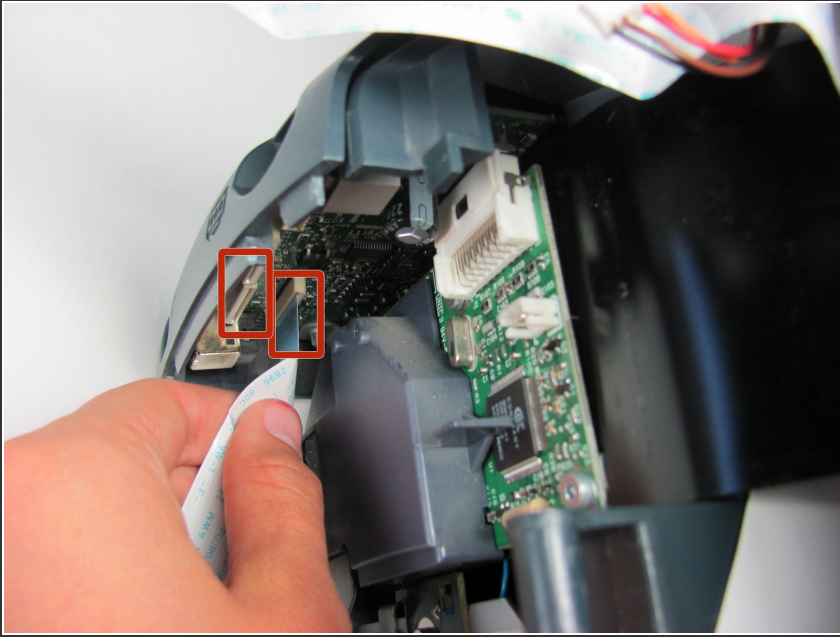
## Step 6 — Removing Scanner Tray - cont.



- Returning to the back of the printer, remove the scanner from the back hinges.
- ⓘ With pressure applied, the scanner will detach easily.

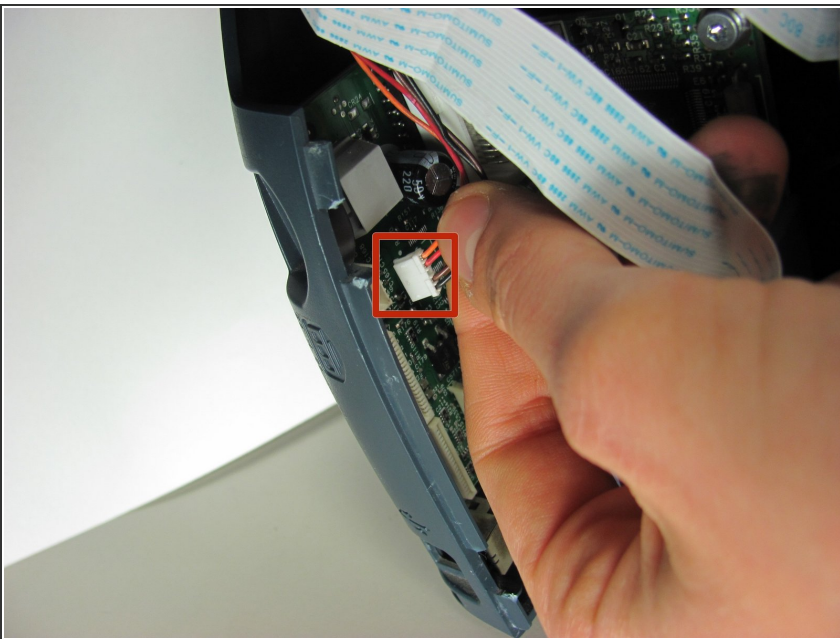


## Step 7



- Gently grasp and unplug the two white ribbon cables from the printer body.
- ⓘ Be sure to grasp the cable at the connector and not to pull on the wires themselves.

## Step 8



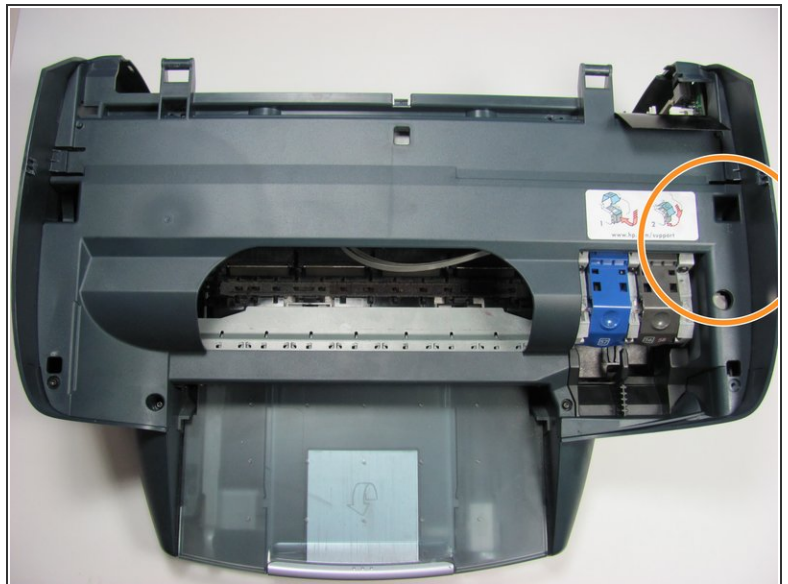
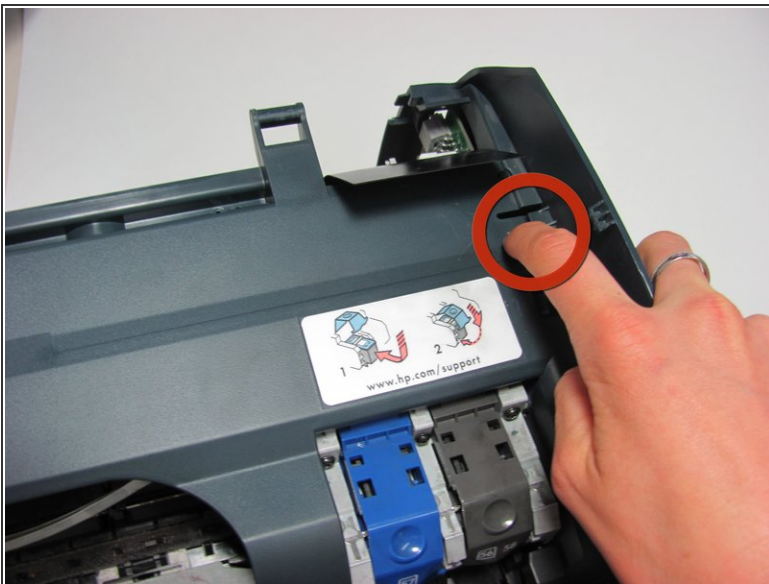
- Unplug the white plastic multi-wire connector (with orange, black, red, and brown wires) from its port.
- ⓘ Be sure to grasp the white connector and not to pull on the wires themselves.

## Step 9 — Detaching the Scanner Tray



- Detach the scanner tray from the printer by lifting the scanner tray off the printer body.

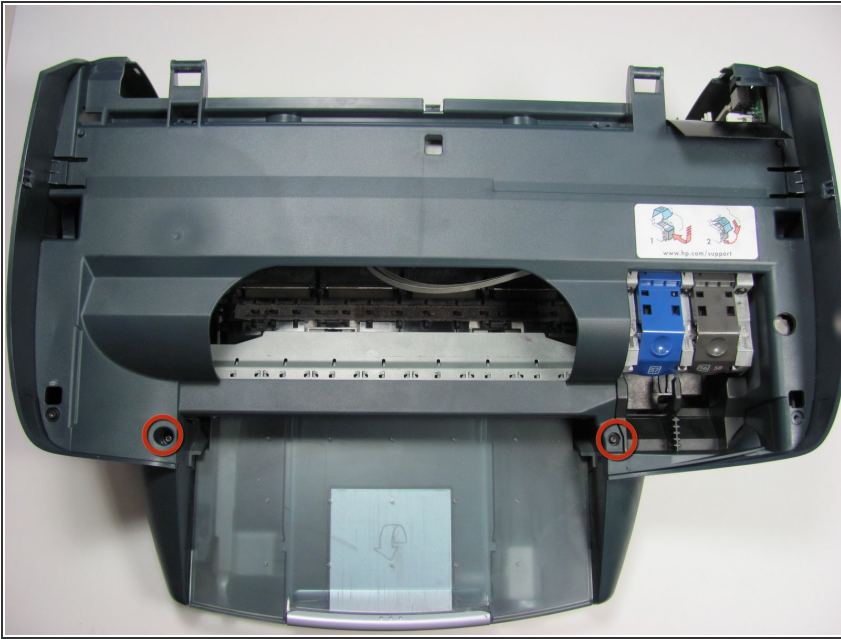
## Step 10 — Encoder Strip



- Locate the panel labeled with a HP support link sticker.
- Release the tab by the support link sticker.
- Remove the black screw below the tab.

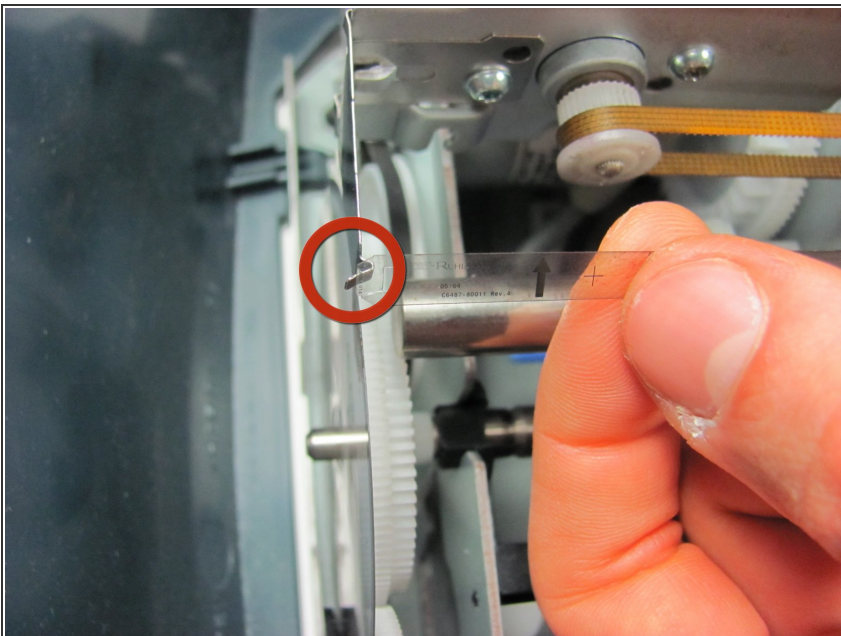


## Step 11



- Remove the two black screws closest to the printer tray.

## Step 12



- Unhook the encoder strip from its small silver hooks and remove it from the printer.
- To replace, feed the new encoder strip through the silver hooks.

To reassemble your device, follow these instructions in reverse order.