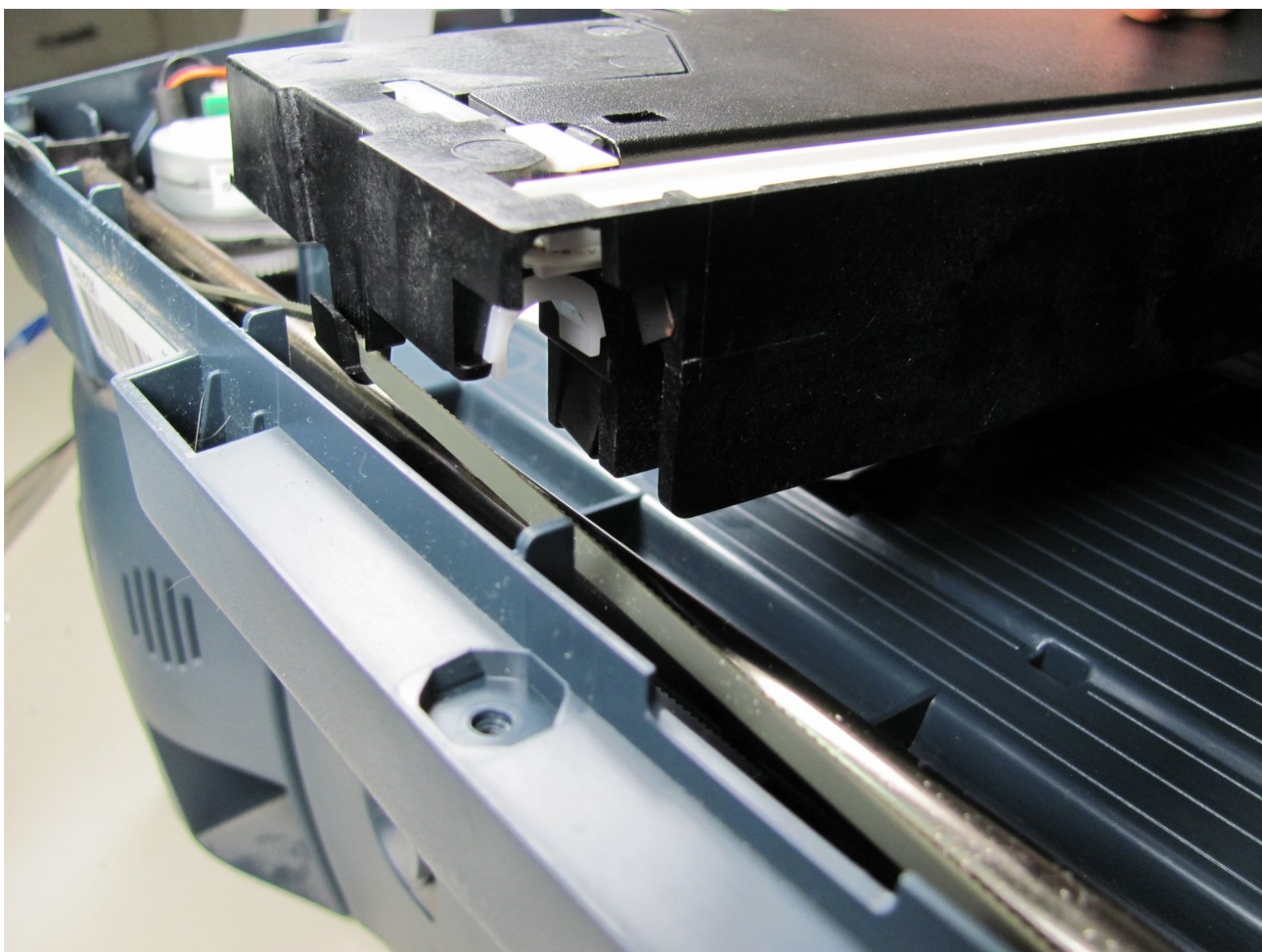




Scanner Head Replacement

If your scanner is not working, it may need a new scanner head - this guide shows you how to replace it.

Written By: Mackenzie Billings



INTRODUCTION

This guide will show you how to access and replace the scanner head on your HP PSC 2410 Photosmart All In One Printer.



TOOLS:

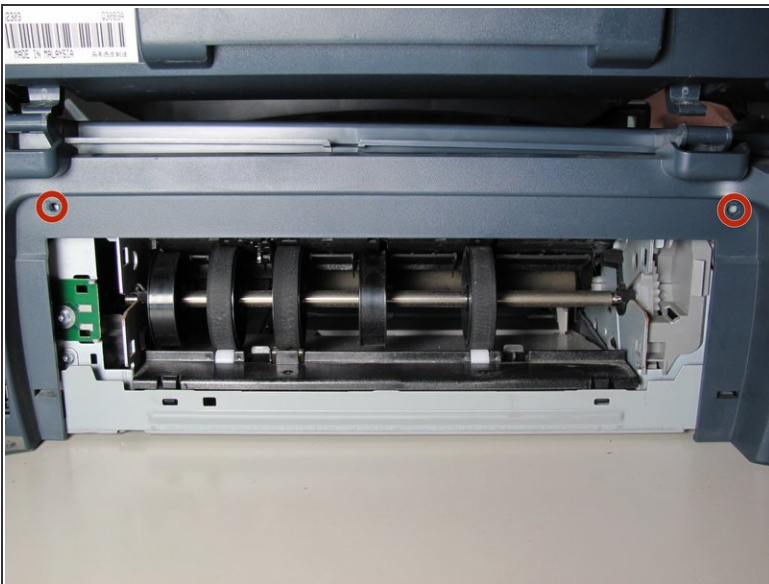
- [TR10 Torx Security Screwdriver](#) (1)
-

Step 1 — Remove Back Panel



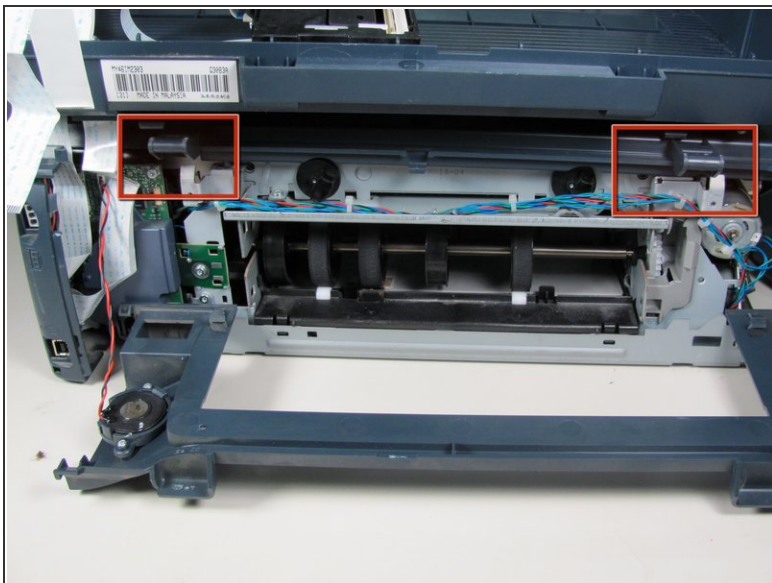
- Remove the back panel by inserting your fingers into the indentations next to the tabs. Press the tabs inward towards each other while pulling the back panel toward you.

Step 2 — Remove Inner Back Pannel



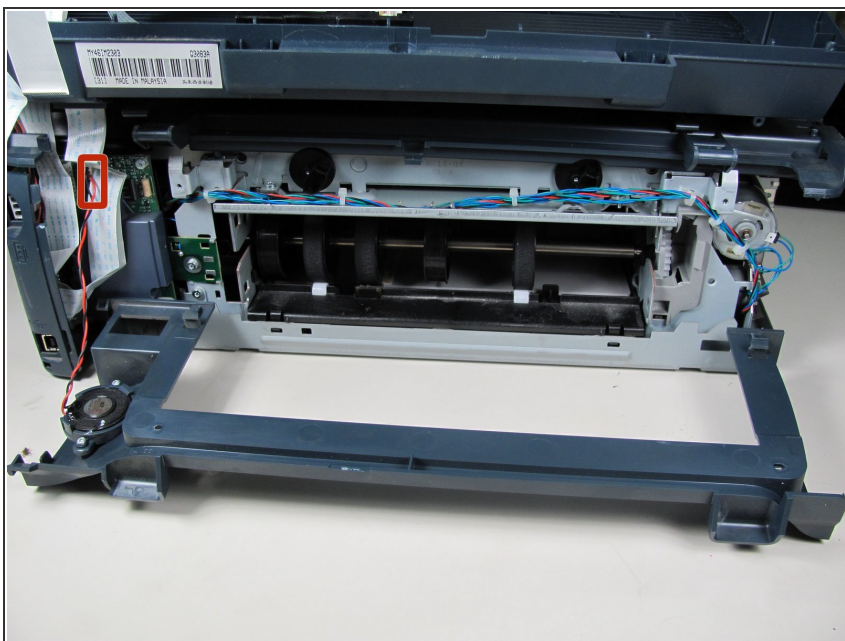
- Using the T10 Torx Security Bit Screwdriver, unscrew the screws on the upper left and right corners of the inner panel to remove the inner back panel.

Step 3 — Remove Upper Portion



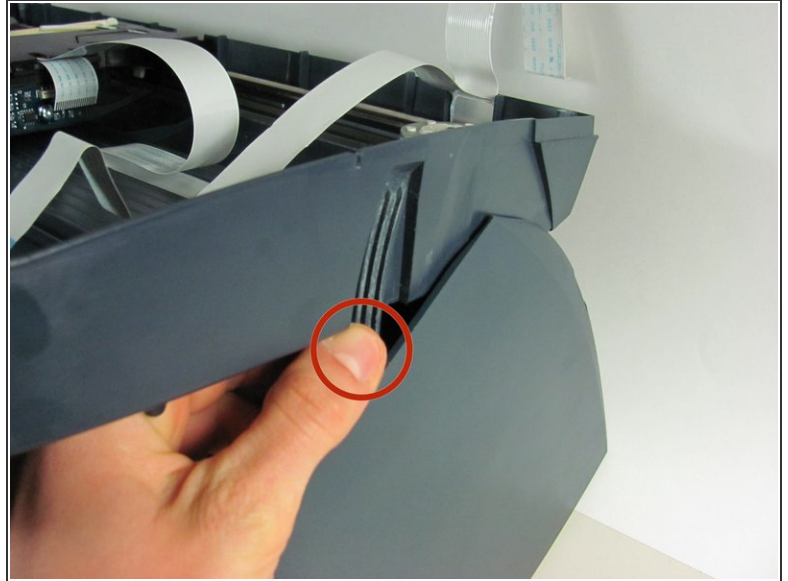
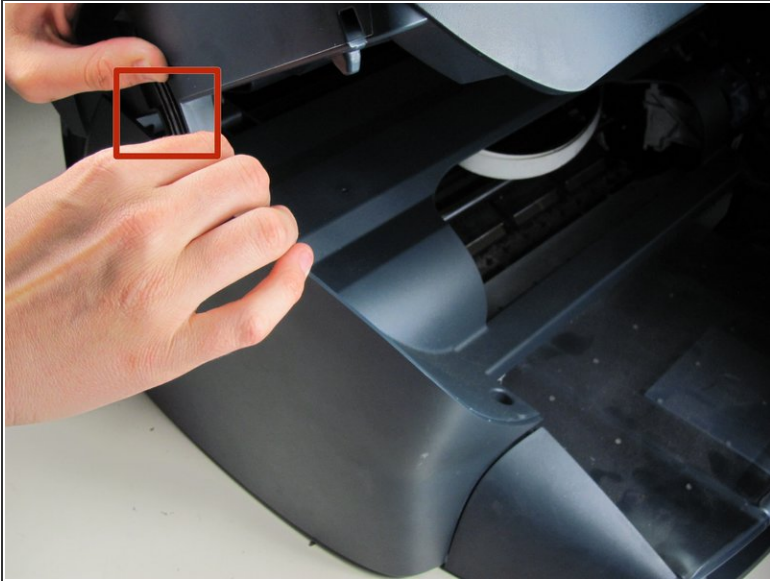
- Press down on the two plastic hinges to remove the upper portion of printer.

Step 4 — Unplug Speaker Wire



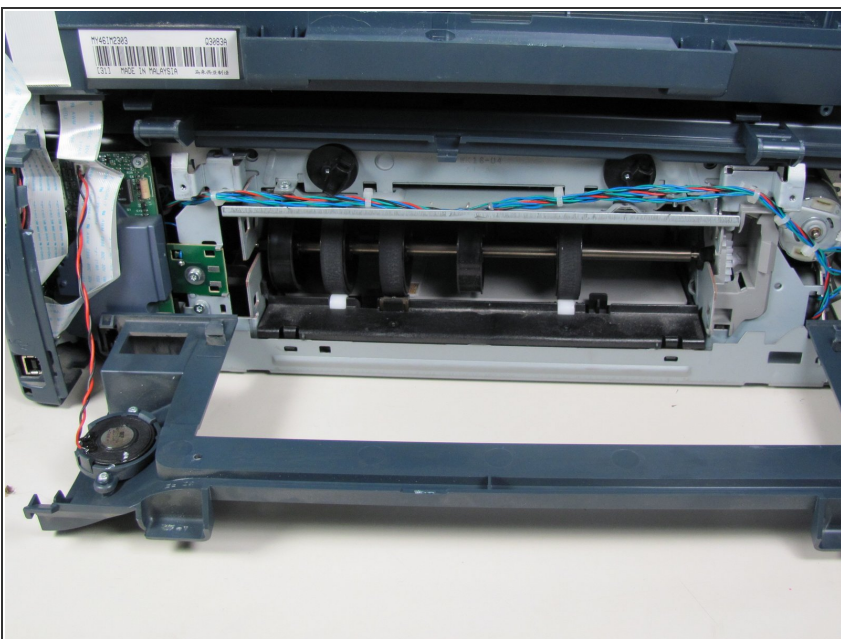
- Grasp the plastic plug on the end of the speaker wire, then gently pull the plug away from the printer until the wire is removed.

Step 5 — Removing Scanner Tray



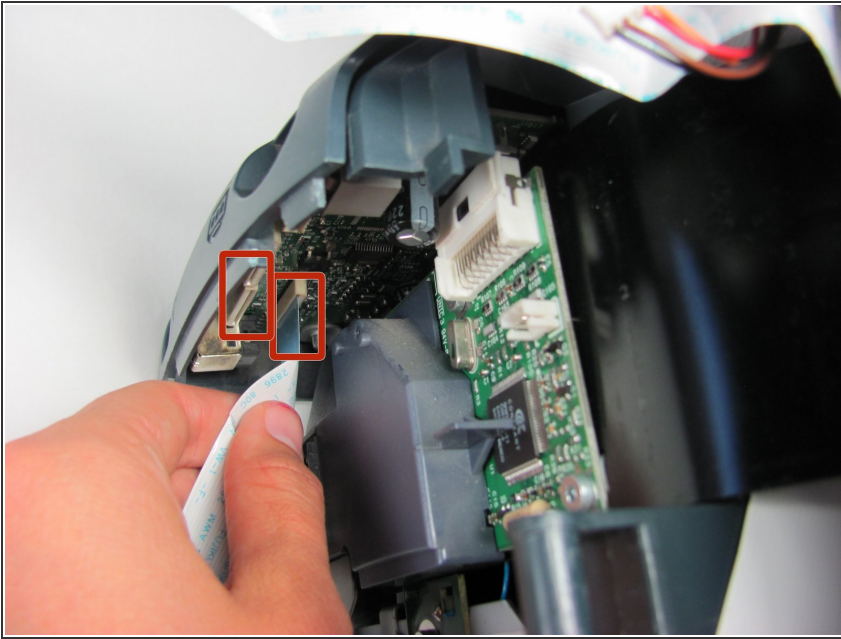
- Rotate the printer so the paper tray is facing towards you.
- Gently lift the scanner tray up and away from the printer.
- Press the gray plastic tabs inward to release the tabs from the printer.

Step 6 — Removing Scanner Tray - cont.



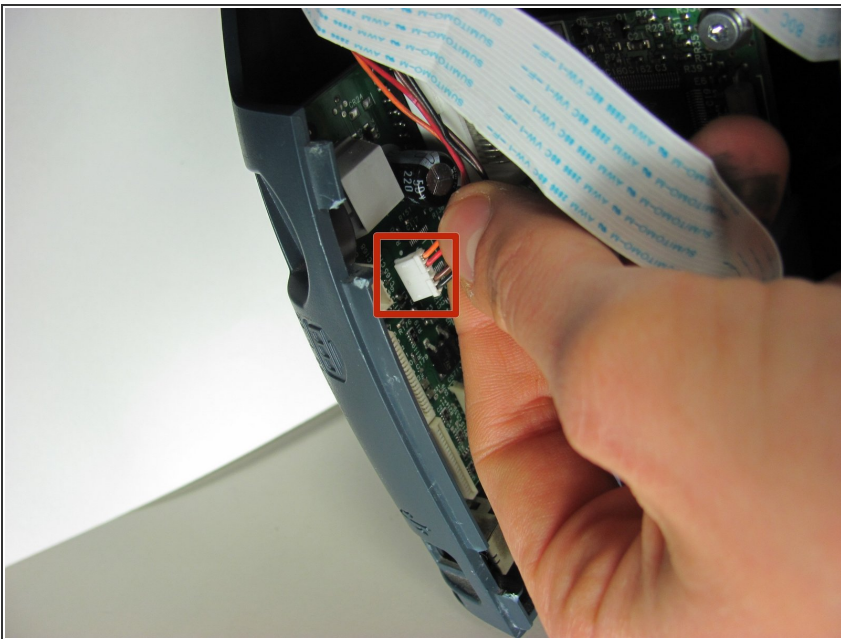
- Returning to the back of the printer, remove the scanner from the back hinges.
- ⓘ With pressure applied, the scanner will detach easily.

Step 7



- Gently grasp and unplug the two white ribbon cables from the printer body.
- ⓘ Be sure to grasp the cable at the connector and not to pull on the wires themselves.

Step 8



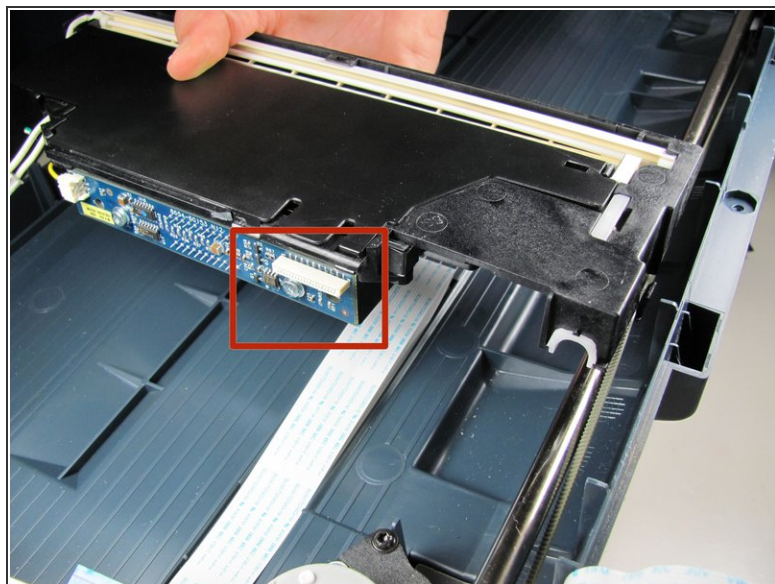
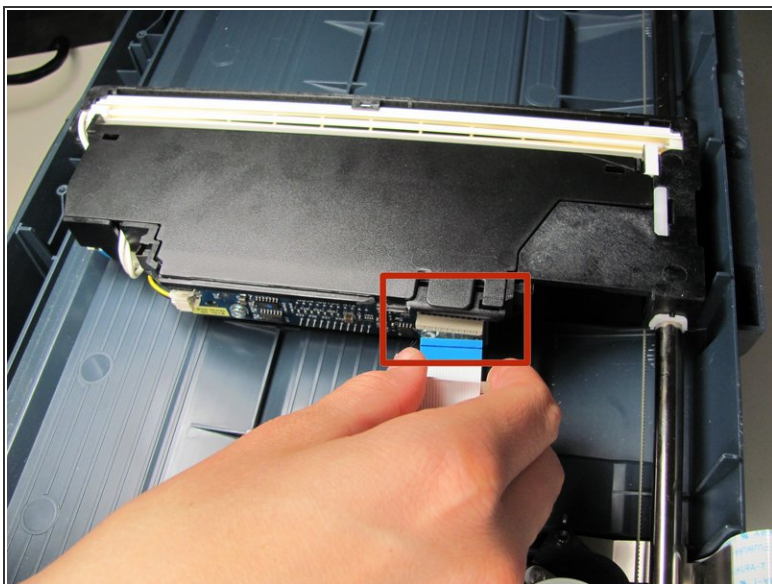
- Unplug the white plastic multi-wire connector (with orange, black, red, and brown wires) from its port.
- ⓘ Be sure to grasp the white connector and not to pull on the wires themselves.

Step 9 — Detaching the Scanner Tray



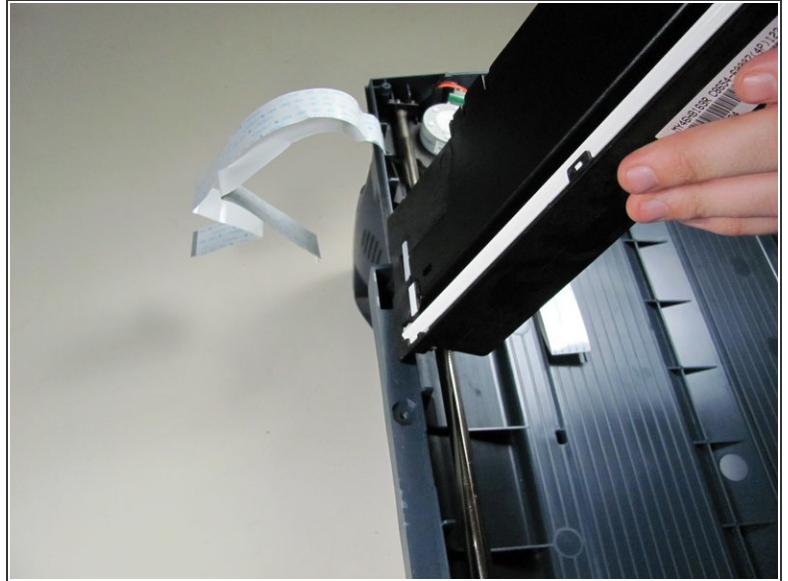
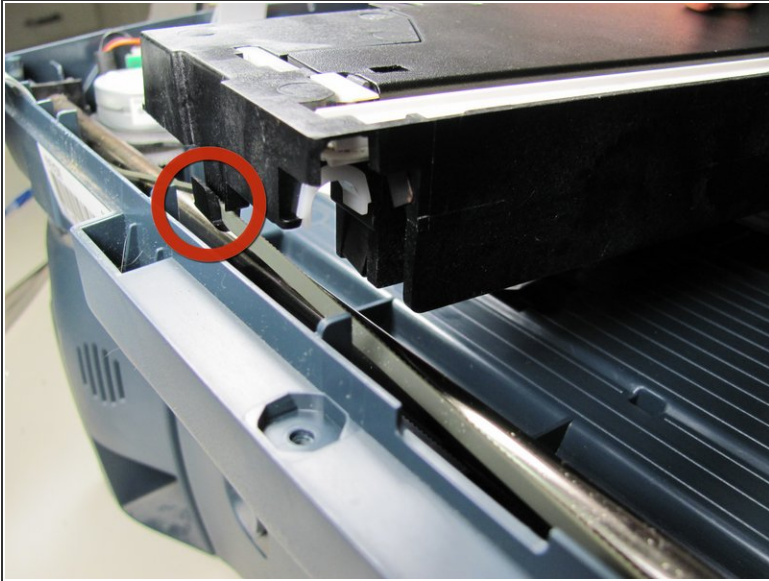
- Detach the scanner tray from the printer by lifting the scanner tray off the printer body.

Step 10 — Detaching the Scanner Head



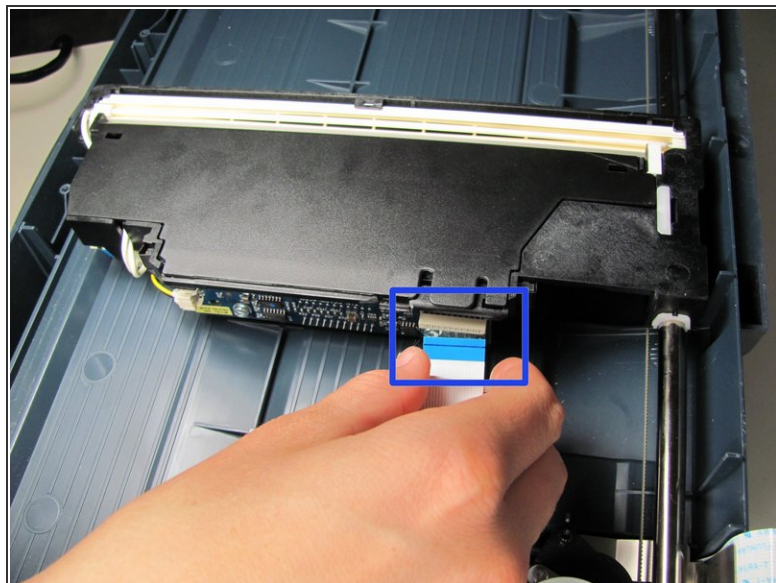
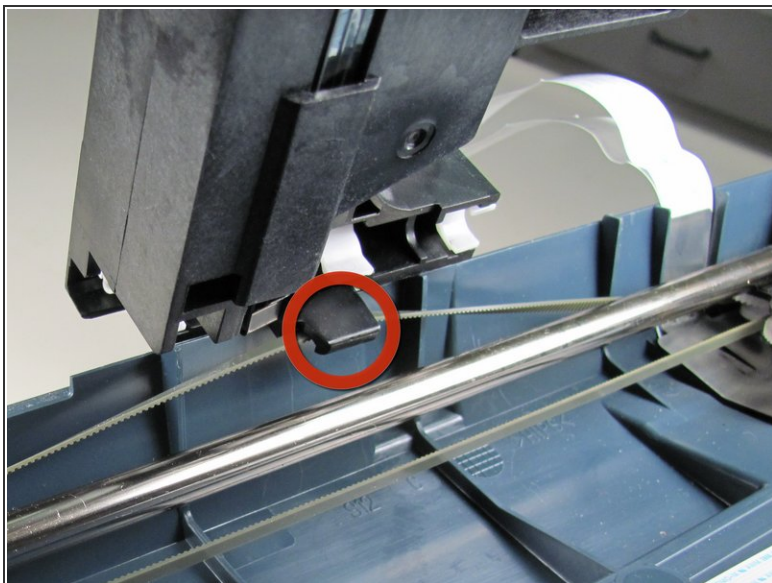
- Detach the white ribbon wire from the scanner head by pulling gently at the connection.

Step 11 — Removing the Scanner Head



- Lift the gray drive belt from the black tab to disconnect the drive belt from the scanner head.
- Remove the scanner head from the scanner by gently rotating and then lifting.

Step 12 — Adding New Scanner Head



- Place the new scanner head in the scanner tray by fastening the drive belt into the black tab.
- ⓘ Make sure the tab on the outer portion of the gray drive belt is fastened.
- Once the drive belt is secured, rotate the scanner head back into position.
- Re-attach the white ribbon wire to the connection from Step 10.

To reassemble your device, follow these instructions in reverse order.