



# iPod Classic Headphone Jack & Hold Switch Replacement

No audio? Replace the headphone jack! Unable to...

Written By: iRobot



# INTRODUCTION

No audio? Replace the headphone jack!

Unable to unlock? Replace the lock switch, which is an integral part of the headphone jack sub assembly.

---

## TOOLS:

[1.5" Thin Putty Knife](#) (1)  
[iFixit Opening Tool](#) (1)  
[Metal Spudger](#) (1)  
[Phillips #00 Screwdriver](#) (1)  
[Spudger](#) (1)

## PARTS:

[iPod Classic \(Thin\) Headphone Jack & Hold Switch](#) (1)  
[iPod Classic \(Thick\) Headphone Jack & Hold Switch](#) (1)

---

## Step 1 — Battery



**⚠ For your safety, completely discharge your iPod before disassembling your device.**

This reduces the risk of a dangerous thermal event if the battery is accidentally damaged during the repair. If your battery is swollen, [take appropriate precautions](#).

**i** Apple designed their new iPods to be very difficult to take apart without destroying major components. Because of the metal faceplate, the metal backing, and the 13 (yes, 13) metal clips holding the case together, this is one of the toughest iPods to disassemble.

**⚠ Proceed with caution and the warning that you may significantly damage your iPod beyond its present condition. Also, you may want a few extra pairs of plastic opening tools during installation, as they are easy to ruin when opening the iPod. Have fun!**

**i** Before opening your iPod, ensure that the hold switch is in the locked position.

## Step 2



- ❗ Opening this iPod is challenging. Don't get discouraged if it takes you a few tries before the iPod is opened. One thing to notice is the angle of the plastic opening tool's tip while inserting it into the iPod. Ideally, the angle should be as vertical as possible while still clearing the edge of the rear panel.
- Insert a plastic opening tool into the seam between the front and back of the iPod.

## Step 3



- Insert another plastic opening tool into the seam between the front and back of the iPod, leaving at least 1.5 inches of space between the two tools.

## Step 4



- At an angle, carefully insert a putty knife about 1/8 inch into the seam between the two opening tools.

⚠ There are thin metal rails running along the inside of the rear panel, so take great care when inserting the putty knife.

- Once the putty knife has cleared the lip of the rear panel, pivot the putty knife so that it is vertical, and carefully (but firmly) wiggle it straight down into the gap between the opening tools.

## Step 5



- Push with your fingers on the rear panel behind the putty knife to minimize bending. Slowly flex the putty knife, as shown in the picture, to ensure that most of the metal tabs on this side of the iPod are disengaged.
- ① The theory behind this method is, rather than attempting to not bend the rear panel at all, to bend it in a favorable manner that allows you to easily restore it later. Therefore, any bend in the sides of the rear panel should be drawing the lip of the rear panel away from the iPod, rather than pushing out on the curved surface. This method also disengages as many of the side clips as possible.



## Step 6



- Remove the putty knife from the iPod and reinsert it closer to the corner of the iPod, using the same wiggle method as before.

⚠ If at all possible, do not bend the corner of the rear panel.

## Step 7



- Between the lock slider and headphone jack, insert a plastic opening tool into the seam between the front and back of the iPod.
- ⓘ You may find it easier to carefully flex the putty knife downward in order to create more of a gap for the opening tool, but be sure not to bend the corner of the rear panel!

## Step 8



- Near the center of the display, carefully insert a metal spudger into the gap created by the plastic opening tool.

⚠ It is easy to create a noticeable bump in the rear panel here that is difficult to repair. When prying the tab free, try to have the metal spudger pivot on the edge of the rear panel rather than bending the rear panel outward.

- Using the metal spudger, disengage the single clip on the top of the iPod.

## Step 9



- Near the other top corner, insert an opening tool into the seam between the front and back of the iPod



## Step 10



- On the other side, insert an opening tool into the seam between the front and back of the iPod.
- ① You may find it easier to angle the opening tool stuck in the top corner in order to create a sufficient gap.

## Step 11



- Remove the plastic opening tool from the top corner and insert it into the seam between the front and back of the iPod, leaving at least 1.5 inches of space between the two tools (as done on the other side).

## Step 12



- At an angle, carefully insert a putty knife about 1/8 inch into the seam between the two opening tools.

⚠ Again, there are thin metal rails running along the inside of the rear panel, so take great care when inserting the putty knife.

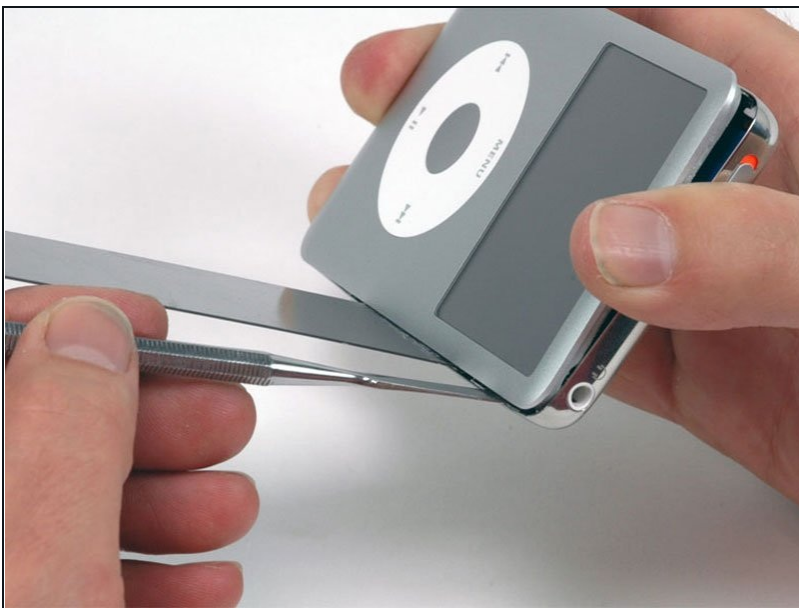
- Once the putty knife has cleared the lip of the rear panel, angle the putty knife so that it is vertical, and carefully (but firmly) wiggle it straight down into the iPod via the gap between the plastic opening tools.
- Push with your fingers on the rear panel behind the putty knife to minimize bending. Ever so slightly flex the putty knife to ensure that most of the metal tabs on this side of the iPod are disengaged.

## Step 13



- ❗ The metal clips near the corners are notorious for tenaciously gripping the front panel. It is necessary to disengage these clips in order to open the iPod.
- Carefully insert a metal spudger into the area near the stubborn metal clip.

## Step 14



- Gently wiggle the metal spudger down so that it is all the way in the rear panel.

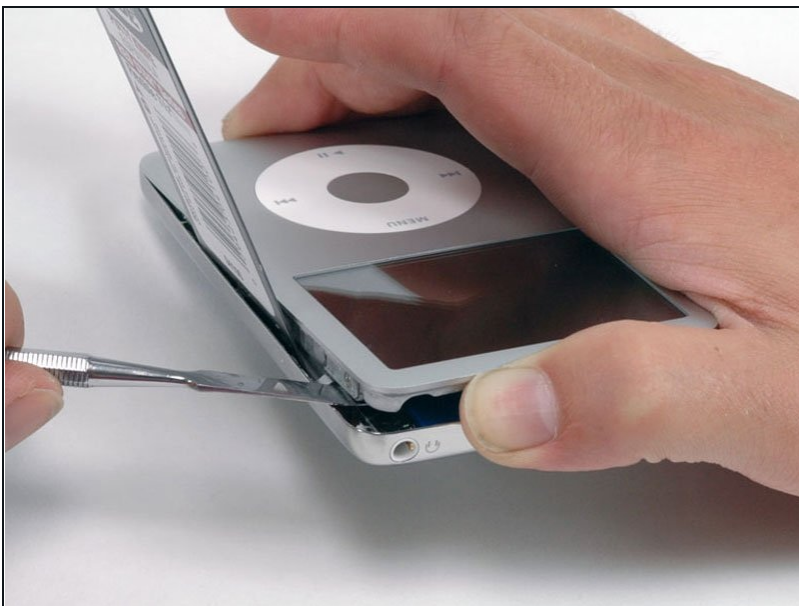
## Step 15



- Gently begin to disengage the clip from the front panel.

⚠ It is easy to create a noticeable bump in the rear panel here that is difficult to repair. When prying the tab free, try to have the metal spudger pivot on the edge of the rear panel rather than bending the rear panel outward.

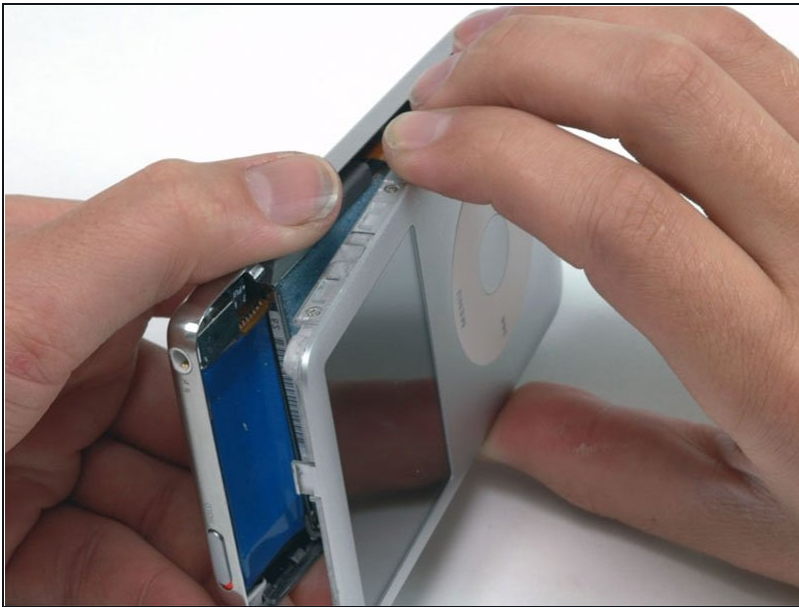
## Step 16



- Continue to push up on the front panel with the metal spudger until the metal clip releases.



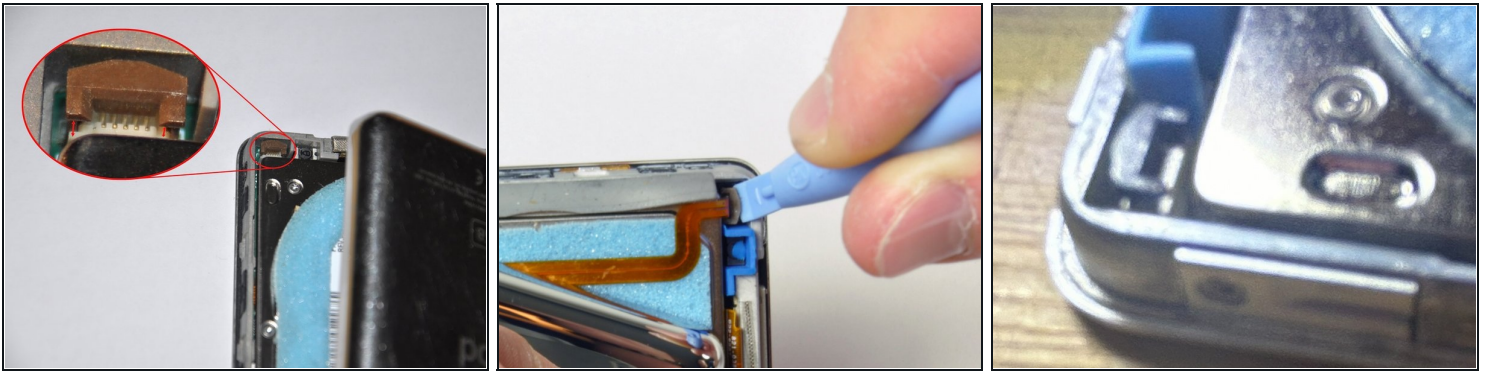
## Step 17



⚠ There are two ribbon cables connecting the rear panel to the rest of the iPod. In the following step, be careful not to damage these ribbon cables.

- Grasp the front panel assembly with one hand and the rear panel with the other.
- ⓘ Take a deep breath!
- Gently (GENTLY) disengage the remaining clips on the rear panel by pulling the tops of the front and rear panels away from each other (think of the bottom of the iPod as a hinge), taking great care not to damage the ribbon cables holding the two halves together.

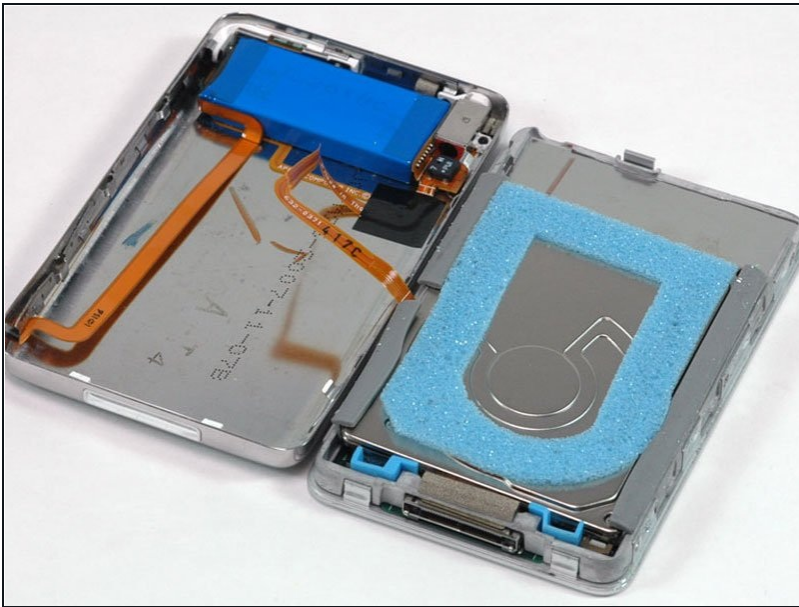
## Step 18



- ⚠ **The lock tab securing the battery flex cable is very delicate.** Pulling too much or pulling the white part of the connector easily risks pulling it completely off the main board. Once it's ripped off of the main board, repair of the battery connector will be very difficult.
- Use angled tweezers or an opening tool to lift the brown lock latch **straight up by 1 mm**. Make sure you pull from both sides of the latch.
    - ⚠ Be careful not to pull at the white parts that extend to the outer edges of the connector.
    - ⚠ Make sure to slide the brown lock tab straight up. The connector is frail and will break if it is accidentally shifted to the side.
  - Grasp the flex cable with your fingers or tweezers and pull it straight up to disconnect it.
    - ⚠ If you're using tweezers, be careful not to grasp the cable too close to the socket, or you'll short the cable contacts.



## Step 19



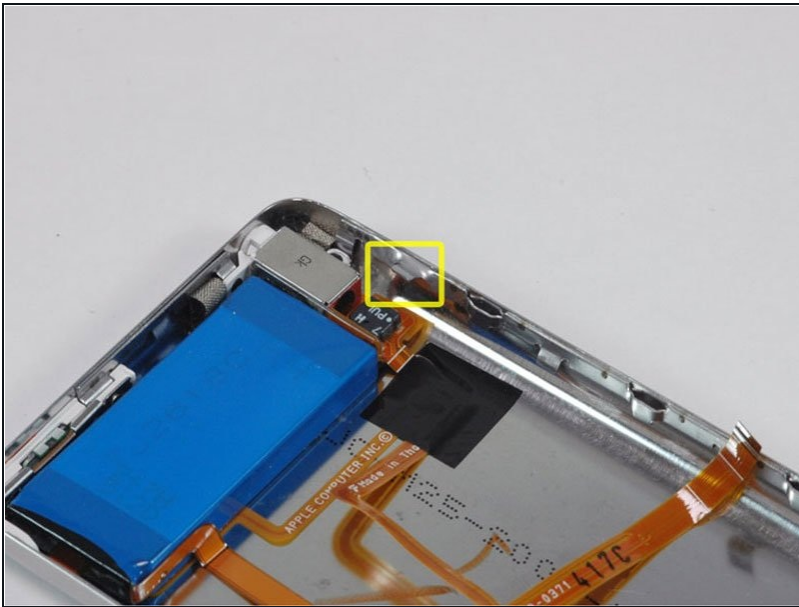
- Place the rear panel next to the iPod, being careful not to strain the orange headphone jack cable.

## Step 20



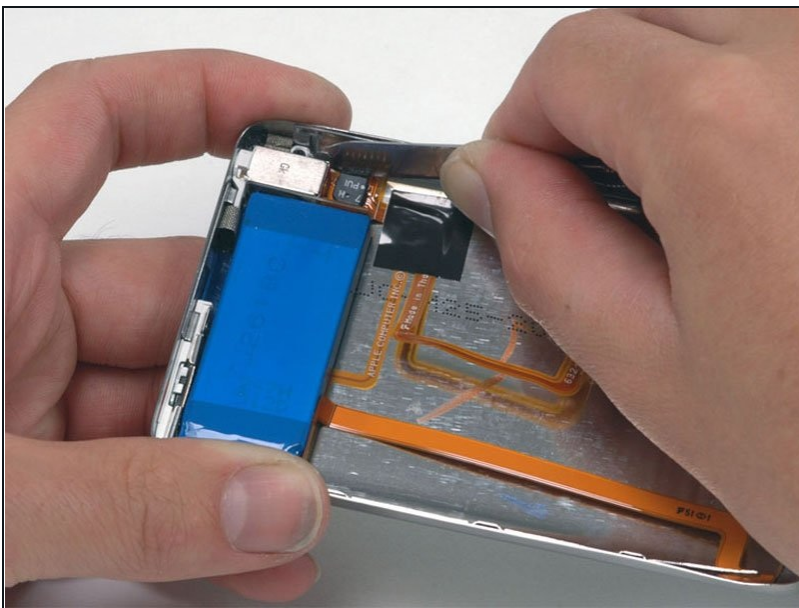
- Lift the hard drive up with one hand so you can access the headphone jack ribbon beneath.
- Use a spudger to flip up the plastic tab holding the headphone jack ribbon in place. The tab will rotate up 90 degrees, releasing the ribbon cable.
- Slide the orange headphone jack ribbon out of its connector.
- The rear panel is now free from the iPod.

## Step 21



- Now to repair the damage caused by liberating the internal parts of the iPod Classic! It is highly likely that at least one of the metal clips in the rear panel has been bent upward. These clips must all be pointing downward in order to reinstall the rear panel.

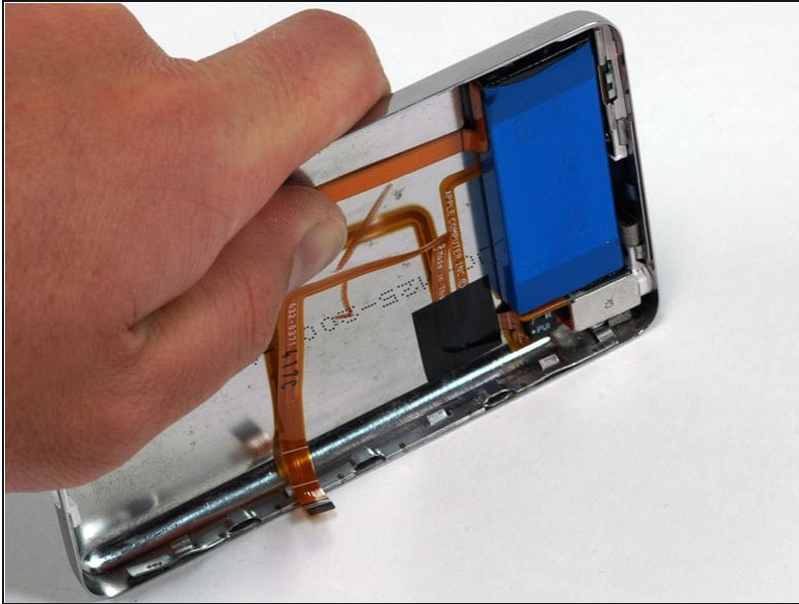
## Step 22



- Take the broad, flat side of the metal spudger and push the clip down, taking care not to tear the thin metal rail from the rear panel. Alternatively a pair of flat pin nosed pliers can be used to reduce risk of slipping and damaging the headphone jack.

⚠ Be careful not to damage any of the headphone jack parts while shaping these clips!

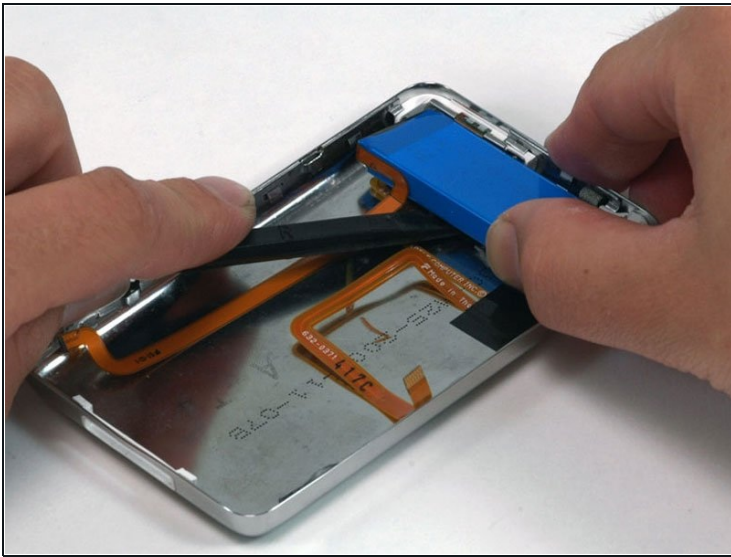
## Step 23



- On a clean, hard surface, lay the rear panel on its side. Carefully but firmly push down on it, rolling the entire lip side back into its proper spot.
- ⓘ It may be necessary to do this multiple times in order to achieve optimal straightness on the sides. It is better to have the edges of the case pushed in slightly too far rather than not far enough, because the reseating of the front panel will bend the rear panel into its correct alignment.
- ⓘ Now that the rear panel is back to a beautiful condition, you can move on to repairing the iPod!



## Step 24



**⚠** The battery is attached to the rear panel with adhesive. Be careful not to tear the orange headphone jack or hold button ribbon cables when removing the battery.

- Use a spudger to lift the battery and the attached orange cable out of the iPod. If you have a 160 GB iPod, the battery will be thicker than the one pictured.
- i** If you have trouble removing the battery, you can use a hair dryer or a heat gun on the back of the iPod to soften the glue holding the battery in place. Be careful not to overheat the battery.

## Step 25 — Headphone Jack & Hold Switch



- Use one hand to hold the orange ribbon cables in place, and peel up the black tape securing the cables to the rear panel with your other hand.

## Step 26



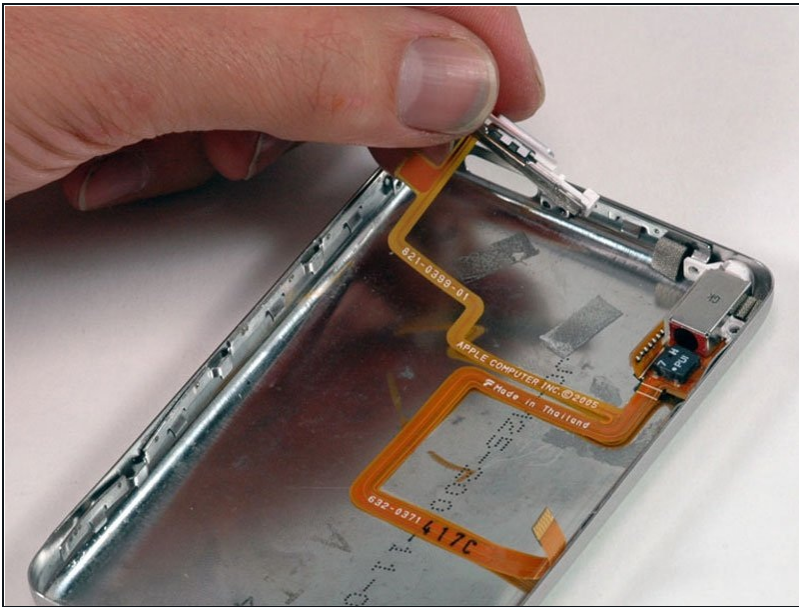
- Remove the two black Phillips screws securing the headphone jack to the rear panel.
- These are SMALL! Be sure you have a size 00 screwdriver on hand

## Step 27



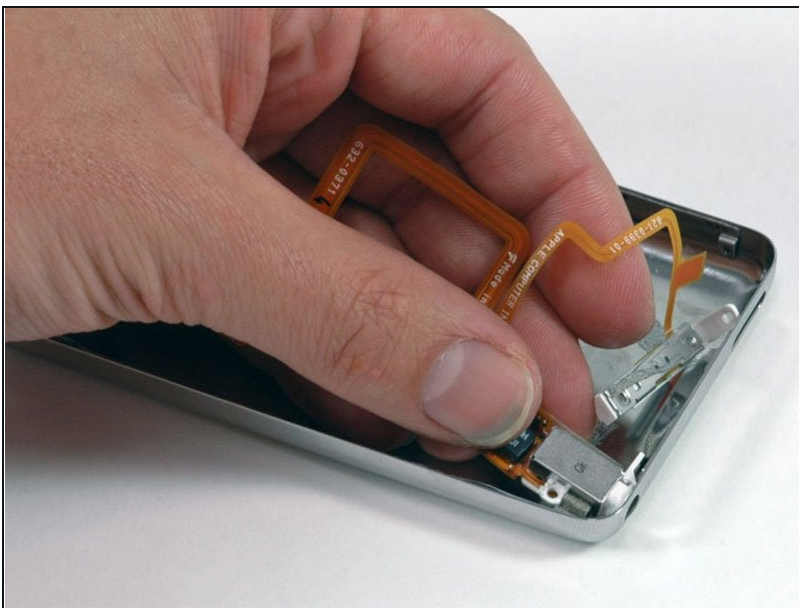
- Remove the following two screws:
  - One black Phillips screw securing the hold switch near the corner of the iPod.
  - One silver Phillips screw securing the other side of the hold switch.

## Step 28



- Lift the hold switch free from its housing on the rear panel. Don't remove the hold switch completely at this time, because it is connected to the same cable as the headphone jack.

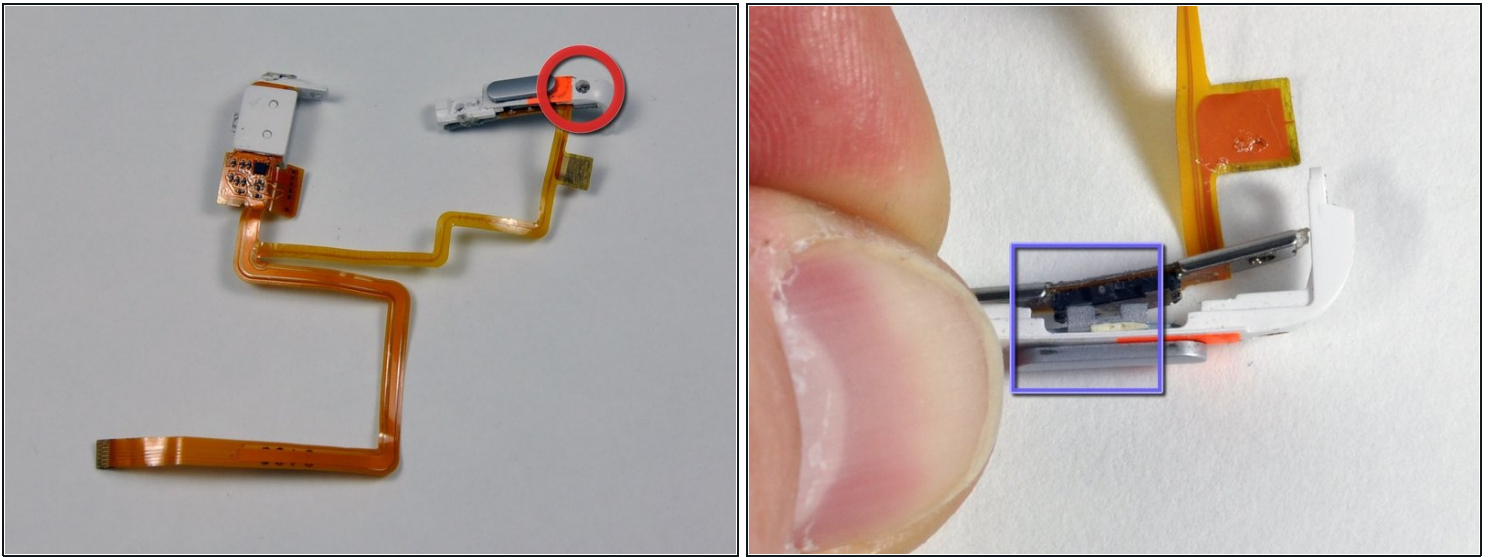
## Step 29



- Slide the headphone jack out of its housing on the rear panel.
- Lift the headphone jack and hold switch assembly out of the iPod.

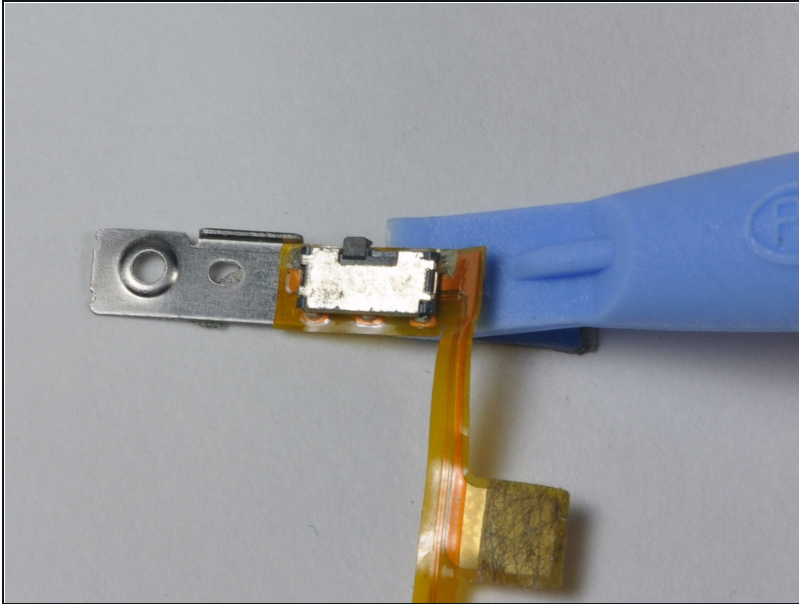


## Step 30



- ① If you're just trying to remove the rear panel, you can skip Steps 30 and 31.
- ① If your replacement headphone jack includes the white plastic hold switch, simply reinstall the replacement headphone jack. When replacing the hold switch assembly note the locating pin near the hole the silver screw position, concentrate on locating that and the rest falls into place. Once it's all screwed in remember to peel the backing tape off the contact pad just along from the jack.
- If your replacement part does not include the plastic hold switch, follow the next steps to transfer the plastic hold switch to your new headphone jack.
- Remove the single Phillips screw nearest to the hold switch.
- Lift the plastic portion of the Hold switch away from the orange ribbon cable.
- ☑ Ensure that the black notch lines up with the gray slider during reassembly of the switch (see picture 2).

## Step 31



- Use the small iPod opening tool to carefully peel the orange ribbon cable and attached black Hold switch up from the metal backing.
- ★ When re-attaching the replacement Hold switch, make sure the two small posts on the back of the switch are aligned with the two holes in the metal backing.

---

**Before you snap the case shut, be sure to test the device to ensure that it's working properly.**

To reassemble your device, follow these instructions in reverse order.