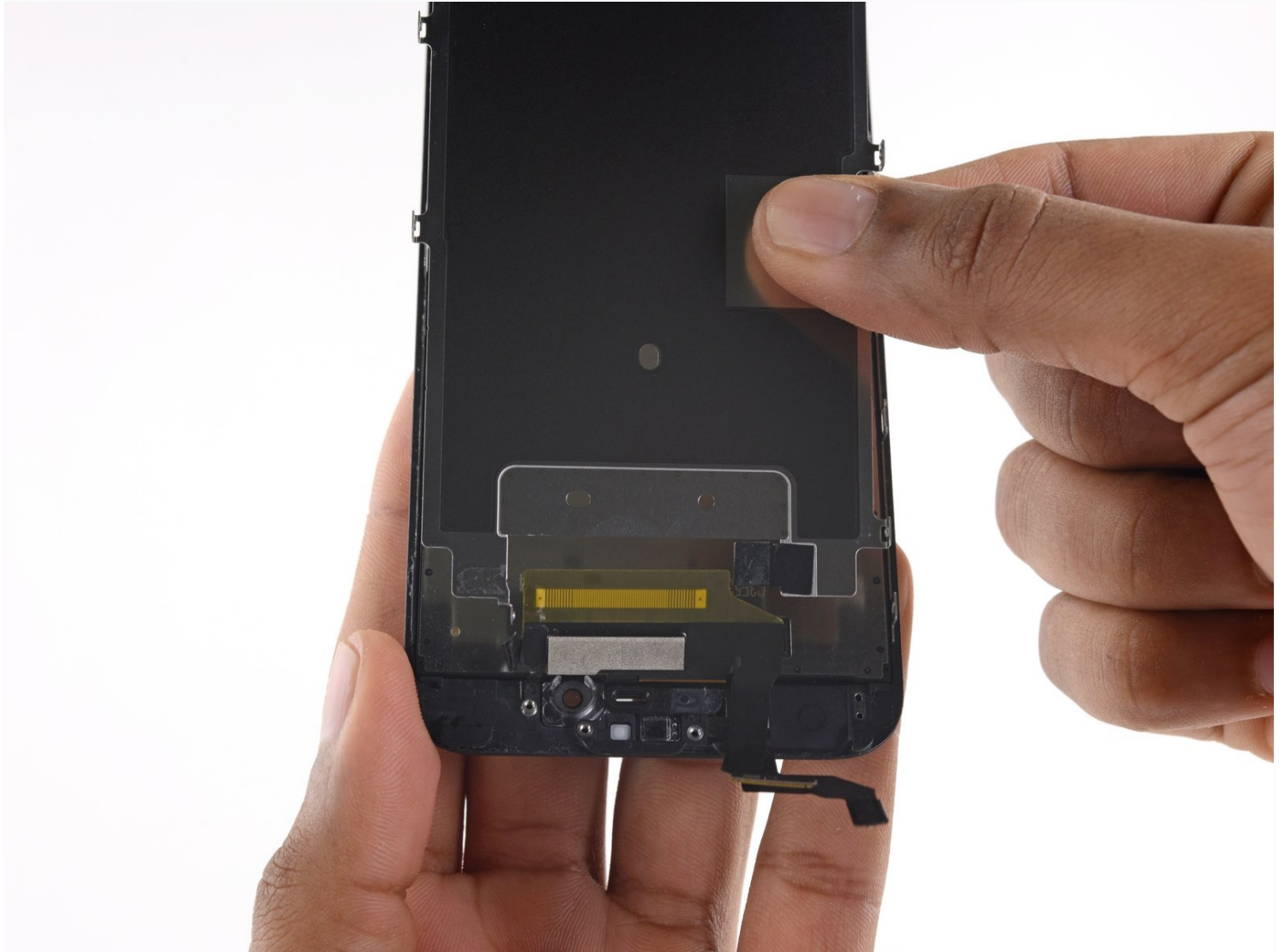




# iPhone 6s Display EMI Shield Replacement

Follow the steps in this guide to replace the...

Written By: Evan Noronha



# INTRODUCTION

Follow the steps in this guide to replace the EMI shield backing the display on your iPhone 6s.

## TOOLS:


Phillips #000 Screwdriver (1)  
iOpener (1)  
iFixit Opening Picks (Set of 6) (1)  
Tweezers (1)  
P2 Pentalobe Screwdriver iPhone (1)  
Suction Handle (1)  
Spudger (1)


## PARTS:

iPhone 6s LCD Shield Plate (1)

## Step 1 — Pentalobe Screws



 Before disassembling your iPhone, discharge the battery below 25%. A charged lithium-ion battery can catch fire and/or explode if accidentally punctured.

 Power off your iPhone before beginning disassembly.

- Remove the two 3.4 mm P2 Pentalobe screws on the bottom edge of the iPhone, on either side of the Lightning connector.

## Step 2 — Opening Procedure



- If you don't have an [Anti-Clamp](#), follow the next three steps to use a suction handle.
- Apply mild heat to the lower edge of the iPhone using an [iOpener](#) or hair dryer for about a minute.
- ① Heat softens the adhesive securing the display, making it easier to open.

### Step 3



- ① Opening the display on the 6s separates a thin strip of adhesive around the perimeter of the display. If you prefer to replace the adhesive, have a set of new adhesive strips ready before you continue. It's possible to complete the repair without replacing the adhesive, and you probably won't notice any difference in functionality.
- Apply a suction cup to the lower left corner of the display assembly.
  - Take care **not** to place the suction cup over the home button.
- ① If your display is badly cracked, [covering it with a layer of clear packing tape](#) may allow the suction cup to adhere. Alternatively, very strong tape may be used instead of the suction cup. If all else fails, you can superglue the suction cup to the broken screen.

## Step 4



- Pull up on the suction cup with firm, constant pressure to create a slight gap between the front panel and rear case.
  - ① Take your time and apply firm, constant force. The display assembly is a much tighter fit than most devices and is held down with adhesive.
- ⚠ Pulling too hard may damage the display assembly. Apply just enough pressure to create a small gap between the display assembly and the rear case.**
- ① If you have any trouble, heat the front of the iPhone using an iOpener, hair dryer, or heat gun until it's slightly too hot to touch. This will help soften the adhesive securing the edges of the display.



## Step 5



ⓘ There is a notch on the underside of the display, just above the headphone jack. This is the safest place to begin prying the phone open.

- Place the flat edge of a spudger into the gap between the screen and rear case, directly above the headphone jack.

## Step 6



- Twist the spudger to widen the gap between the front panel assembly and the rest of the phone.

## Step 7



- Insert the flat end of the spudger on the left side of the phone, between the display assembly and rear case.
- Slide the spudger up the side of the phone to separate the adhesive and pop the clips free.

## Step 8



- Remove the spudger and reinsert it on the bottom edge, where you pried the phone open.
- Slide the spudger to the right, along the bottom edge of the phone.

## Step 9



- Slide the spudger up the right side to continue separating the adhesive and popping the display clips free from the iPhone.

## Step 10

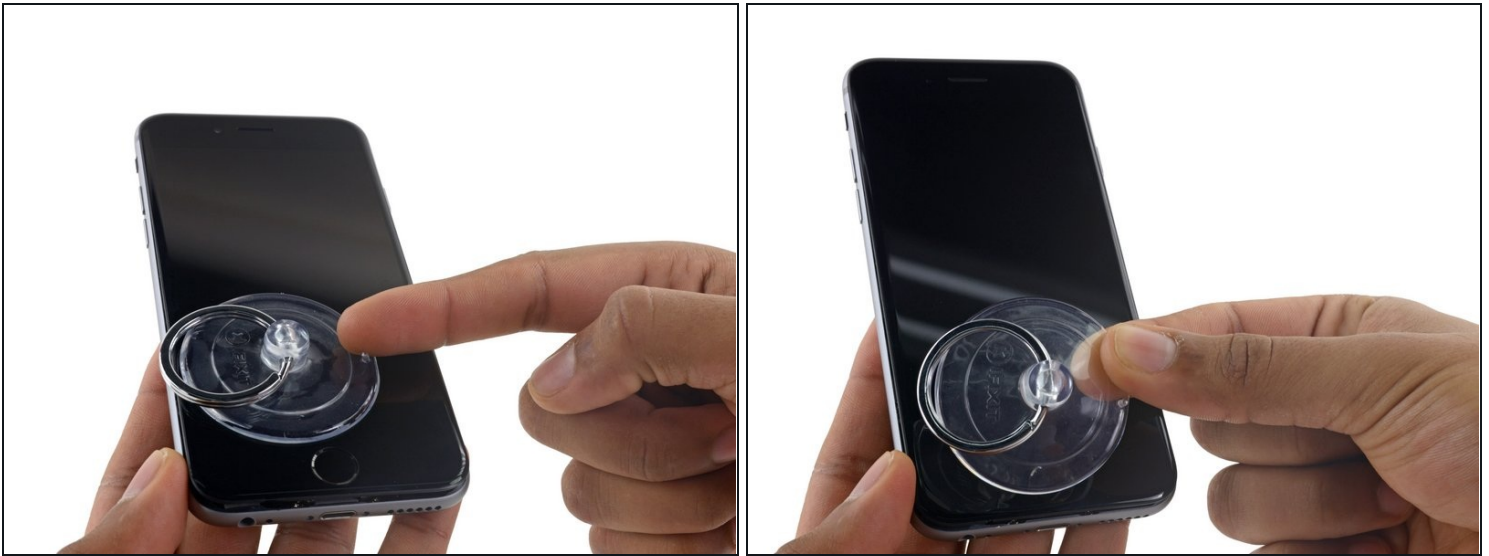


- Use the suction cup to open the display, breaking the last of the adhesive.

⚠ Don't open the display more than 90°, as it is still connected at the top by three cables that may break if stretched.



## Step 11



- Pull up on the nub on the top side of the suction cup to remove it from the front panel.

## Step 12



- Gently grasp the display assembly and lift it up to open the phone, using the clips at the top of the front panel as a hinge.
- Open the display to about a 90° angle, and lean it against something to keep it propped up while you're working on the phone.
  - Add a rubber band to keep the display securely in place while you work. This prevents undue strain on the display cables.
- ⓘ In a pinch, you can use an unopened canned beverage to hold the display.

## Step 13 — Battery Connector



- Remove two Phillips screws securing the battery connector bracket, of the following lengths:
  - One 2.9 mm screw
  - One 2.2 mm screw
- ① Throughout this repair, [keep track of each screw](#) and make sure it goes back exactly where it came from to avoid damaging your iPhone.

## Step 14



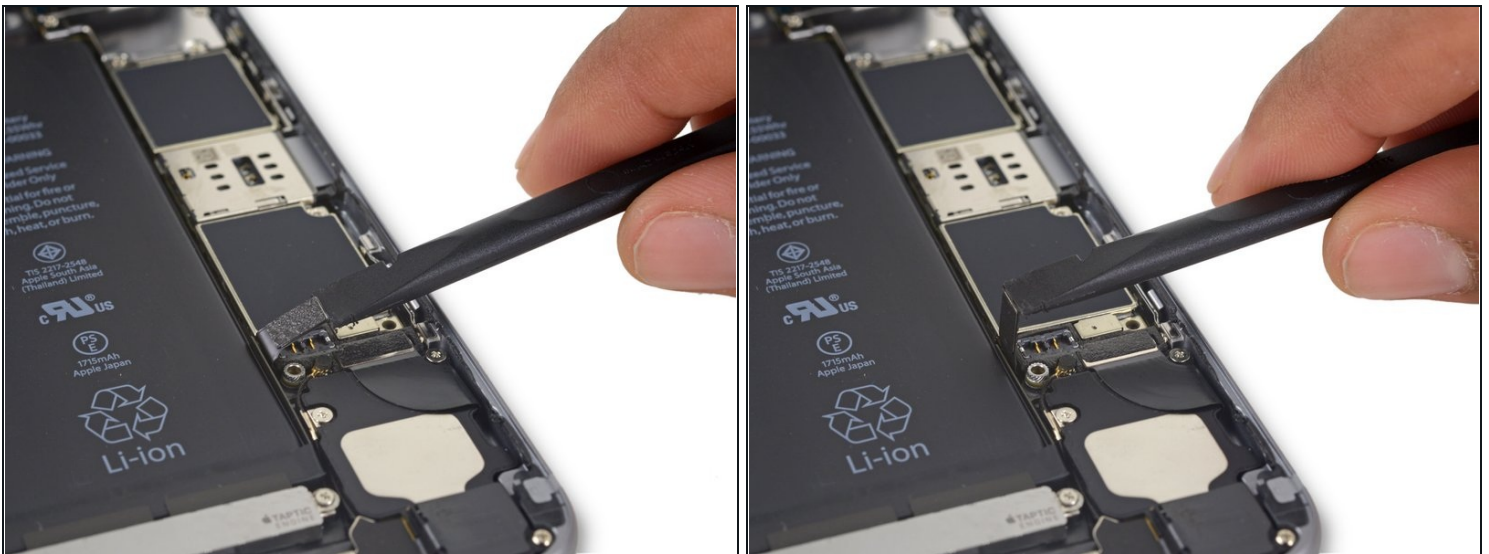
- Remove the battery connector bracket from the iPhone.

## Step 15



- Use the point of a spudger to disconnect the battery connector by prying it straight up from the logic board.

## Step 16



- Push the battery connector away from the logic board until it stays separated from its socket, so as to avoid any accidental connection to the battery while you work.



## Step 17 — Unfasten the display cable bracket



- Remove the following four Phillips screws securing the display cable bracket:
  - Three 1.2 mm screws
  - One 2.8 mm screw

## Step 18



- Remove the display cable bracket.



## Step 19



- Use a spudger or a clean fingernail to disconnect the front camera flex cable by prying it straight up from its socket on the logic board.

## Step 20



- Disconnect the digitizer cable by prying it straight up from its socket on the logic board.

⚠ When reconnecting the digitizer cable, **do not press the center of the connector**. Press one end of the connector, then press the opposite end. Pressing in the center of the connector can bend the component and cause digitizer damage.

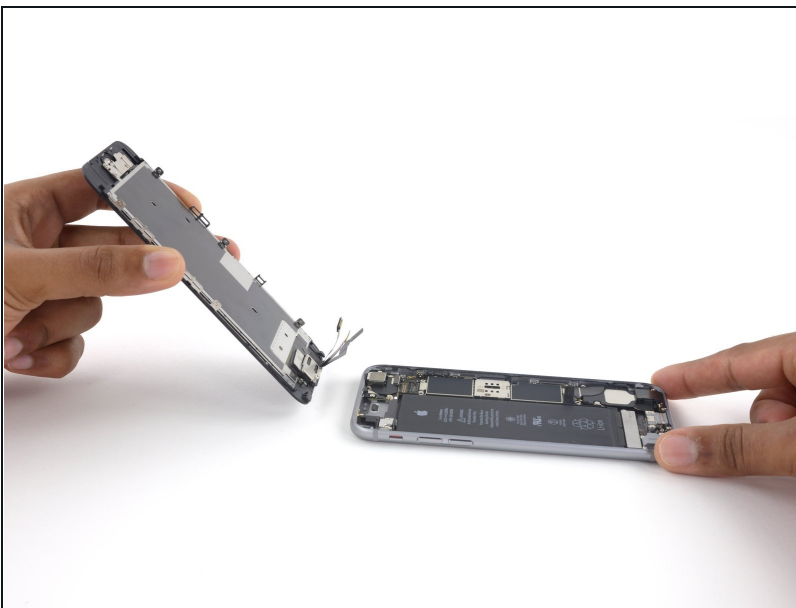
## Step 21



⚠ Make sure the battery is disconnected before you disconnect or reconnect the cable in this step.

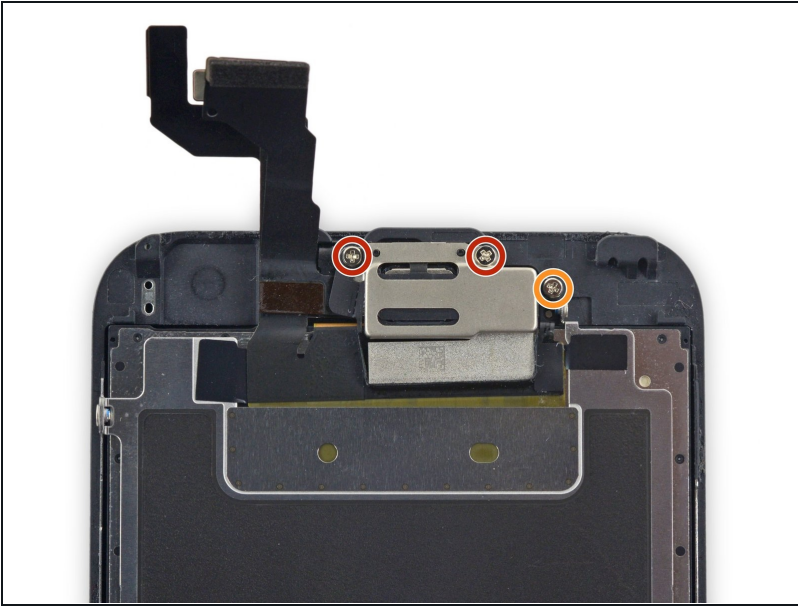
- Disconnect the display cable by prying it straight up from its socket on the logic board.

## Step 22



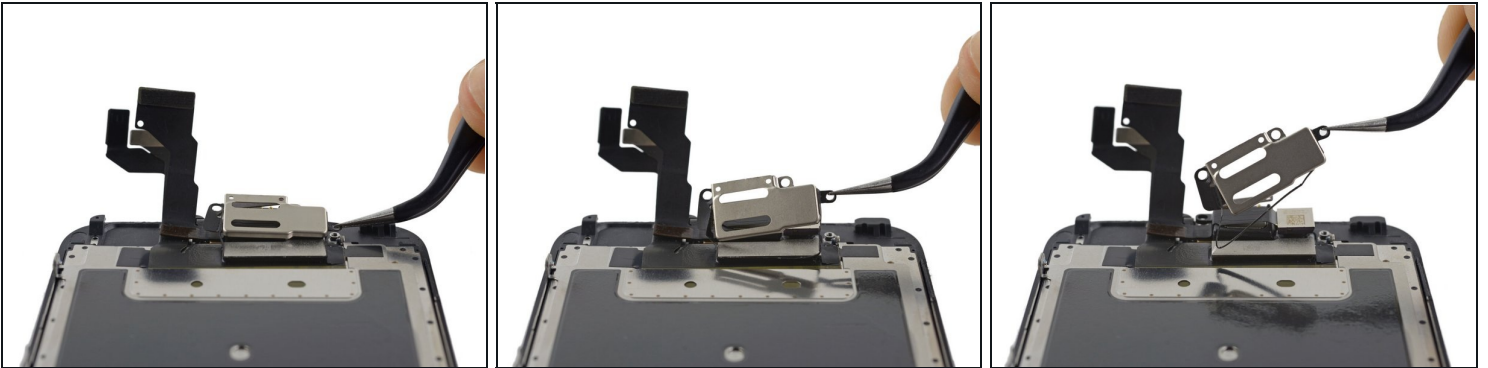
- Remove the display assembly.
- ✦ During reassembly, pause here if you wish to [replace the adhesive around the edges of the display](#).

## Step 23 — Earpiece Speaker



- Remove the following three Phillips screws securing the earpiece speaker bracket:
  - Two 2.3 mm screws
  - One 1.9 mm screw

## Step 24

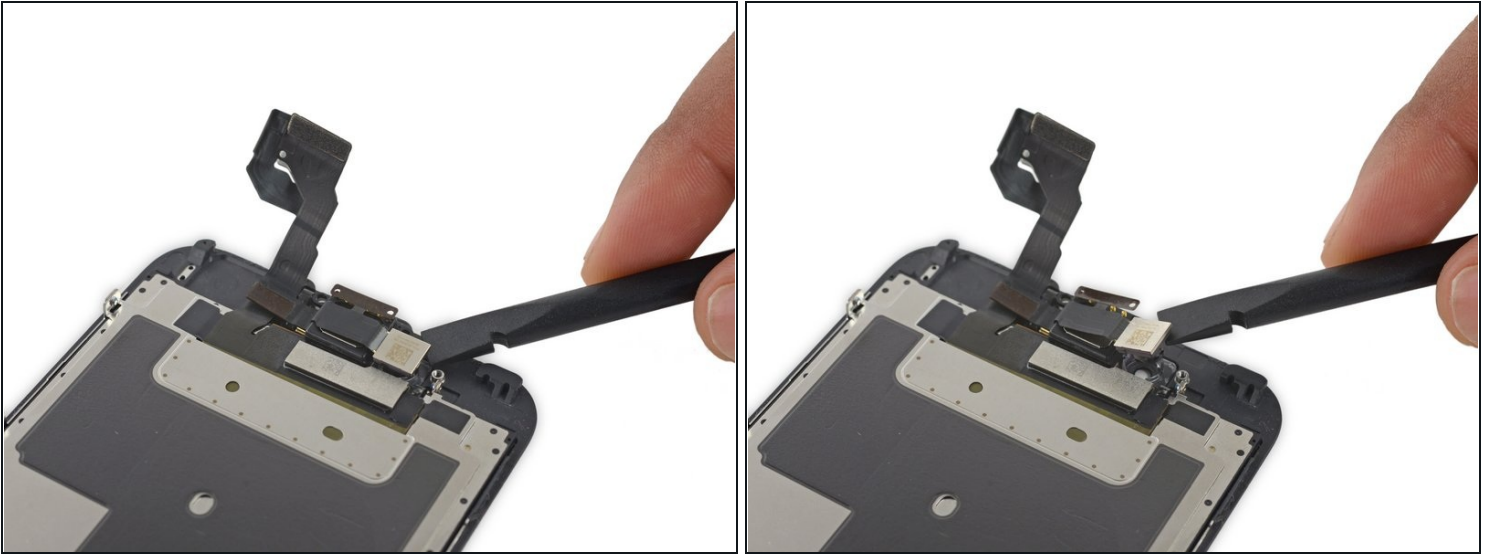


- Lift up and remove the earpiece speaker bracket, peeling up the bracket gasket as you go.

⚠ Peel up the gasket carefully, as it is thin and can tear easily.

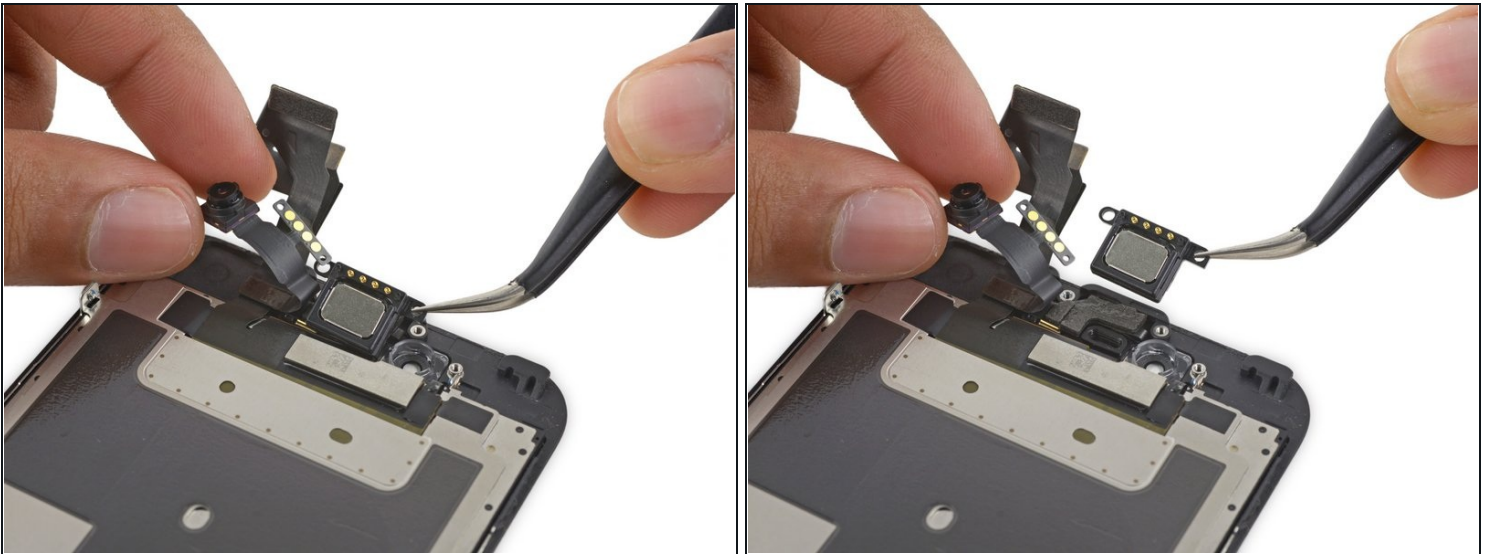


## Step 25



- Use the flat end of a spudger to nudge the front-facing camera from its housing.

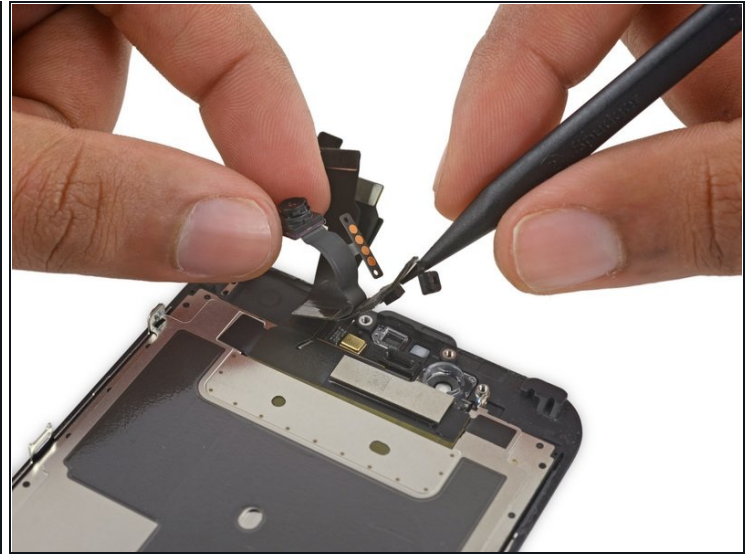
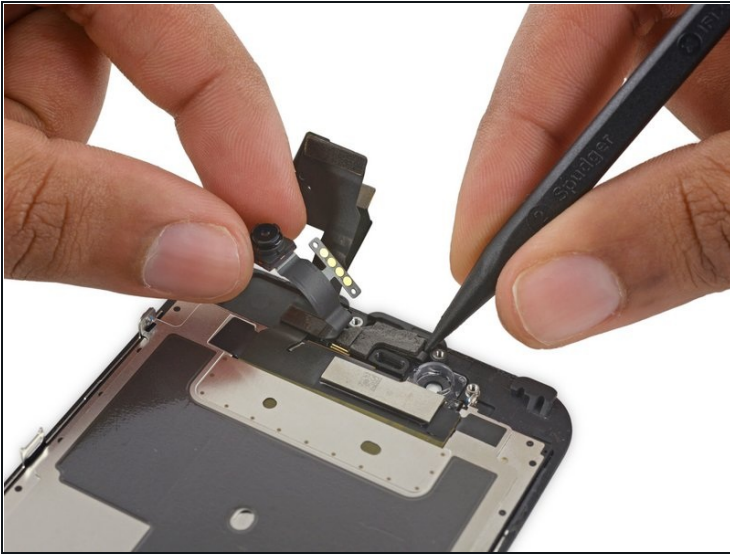
## Step 26



- Pull back the front-facing camera to access the earpiece speaker.
  - Remove the earpiece speaker.
- ⓘ Be careful not to touch the golden contacts as you remove and replace the speaker. Oil from your skin can interfere with the contacts and interrupt the connection. If you accidentally touch them with your skin, wipe them off with a little isopropyl alcohol (rubbing alcohol) before reinstalling them.

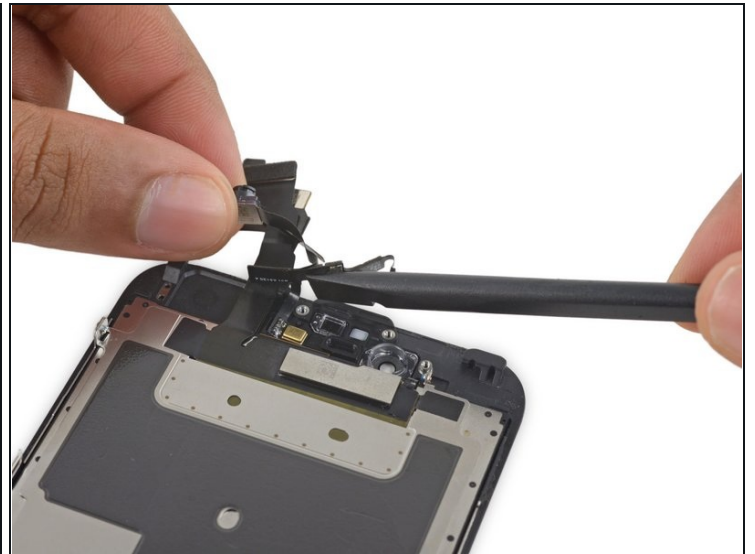
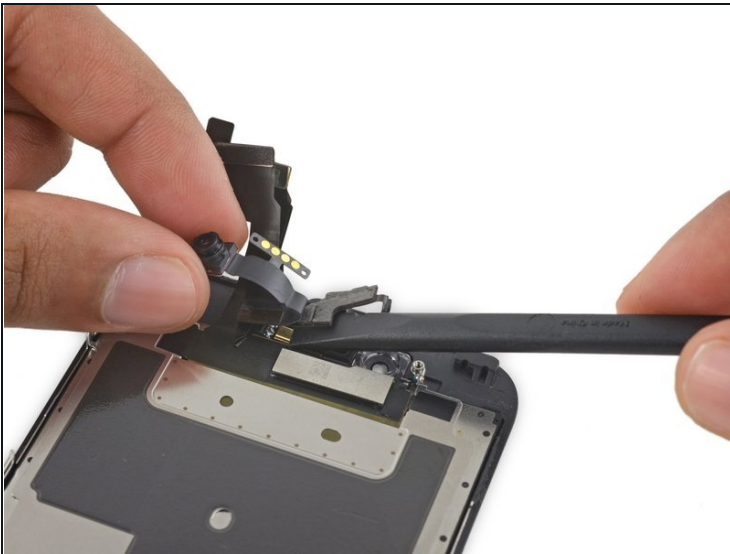


## Step 27 — Front-Facing Camera and Sensor Assembly



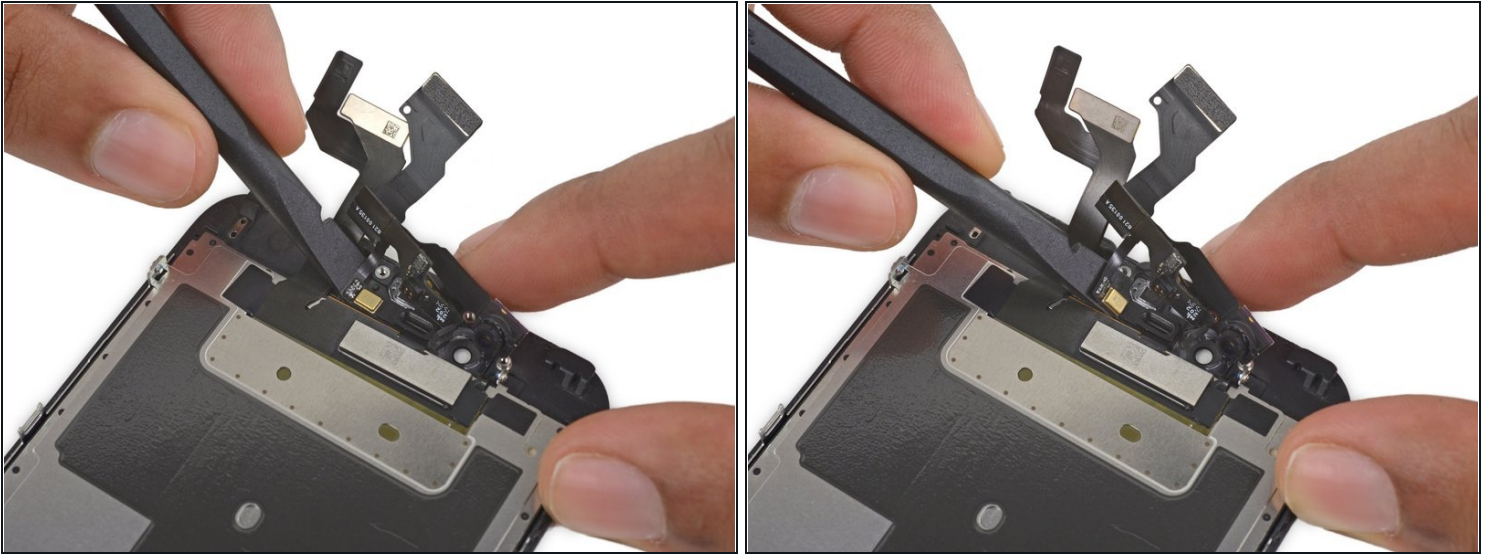
- Holding the front-facing camera out of the way, use the point of a spudger to push the ambient-light sensor up out of its recess in the front panel.

## Step 28



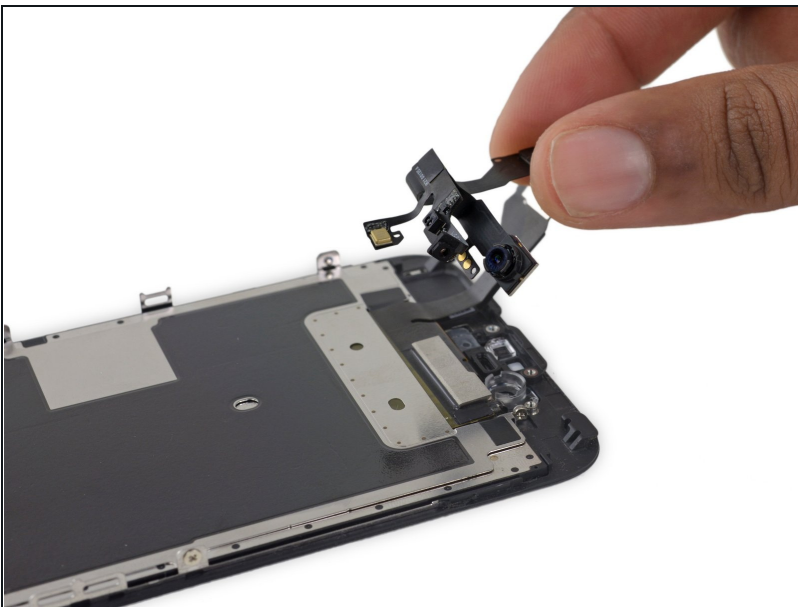
- Fold the front-facing camera and sensor cable up to allow access to the microphone.

## Step 29



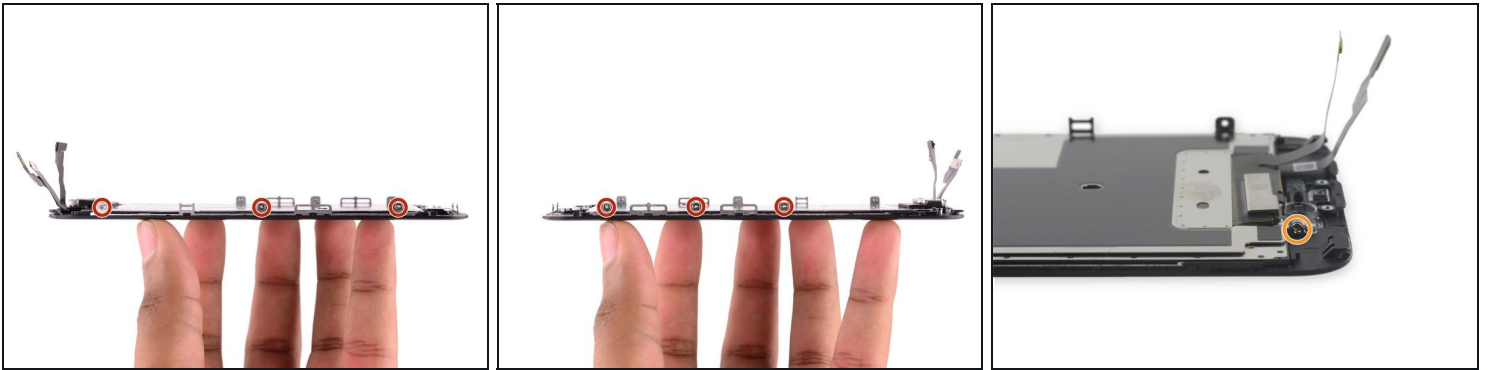
- Use the flat end of a spudger to gently break up the adhesive securing the microphone to the front panel.

## Step 30



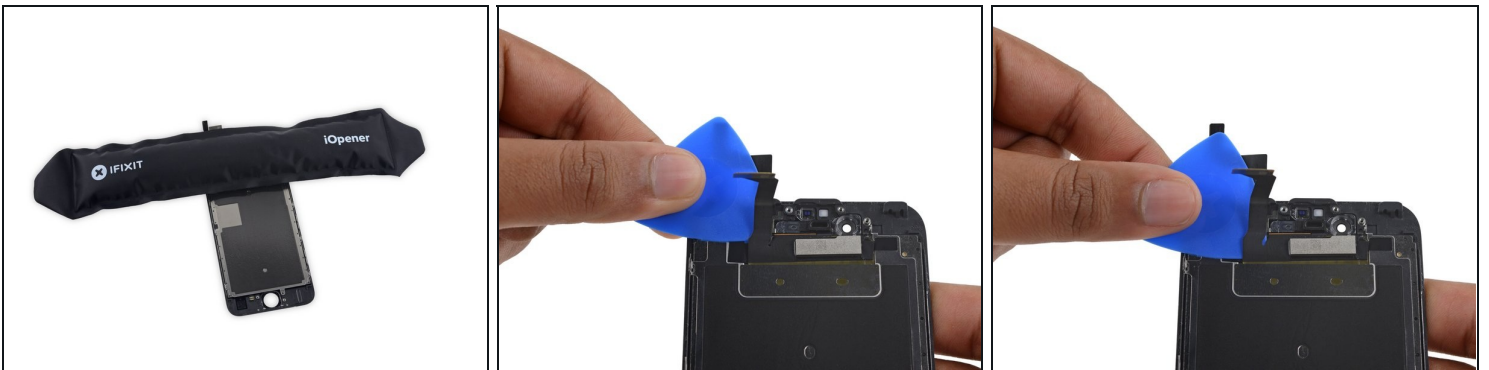
- Remove the front-facing camera and sensor cable.

## Step 31 — Display EMI Shield



- Remove the following seven 1.3 mm Phillips screws:
  - Three screws each on the left and right edges of the display panel.
  - A single screw recessed 1.5 cm from the right edge of the screen.

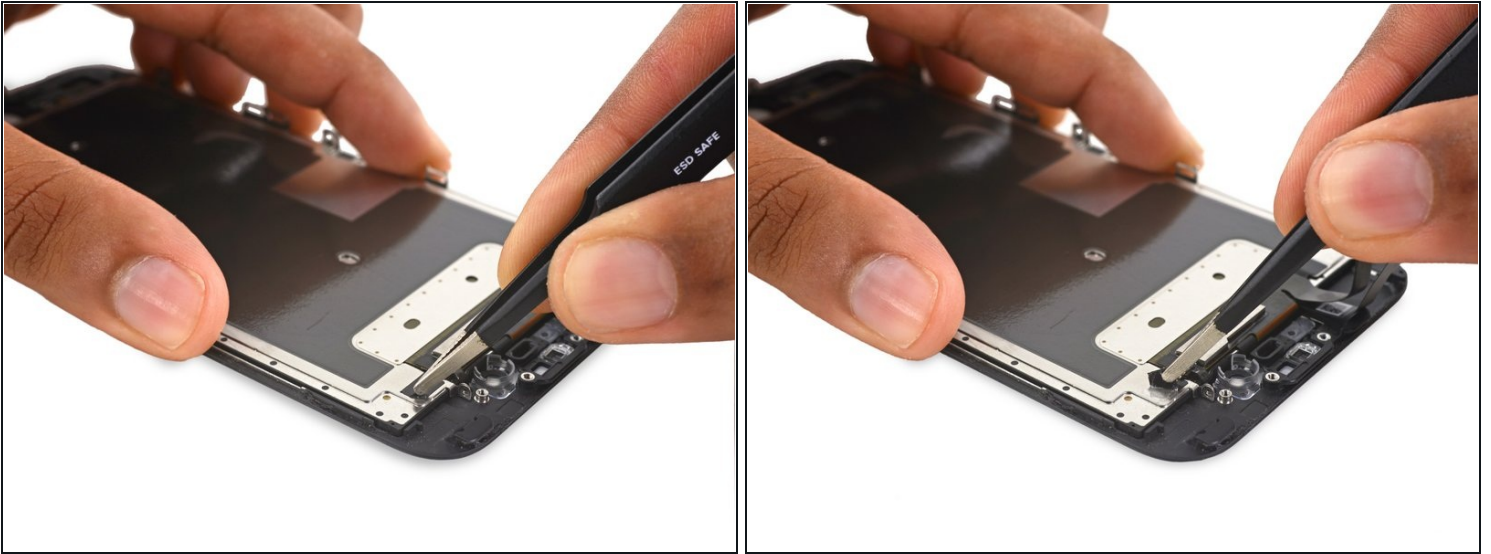
## Step 32



- [Prepare an iOpener](#) and lay it over the top edge of the phone to loosen the tape connecting the EMI shield to the front panel.
- After a minute, insert an opening pick between the tape and display data cable.
- Push the pick downwards until it is flush with the upper edge of the EMI shield.

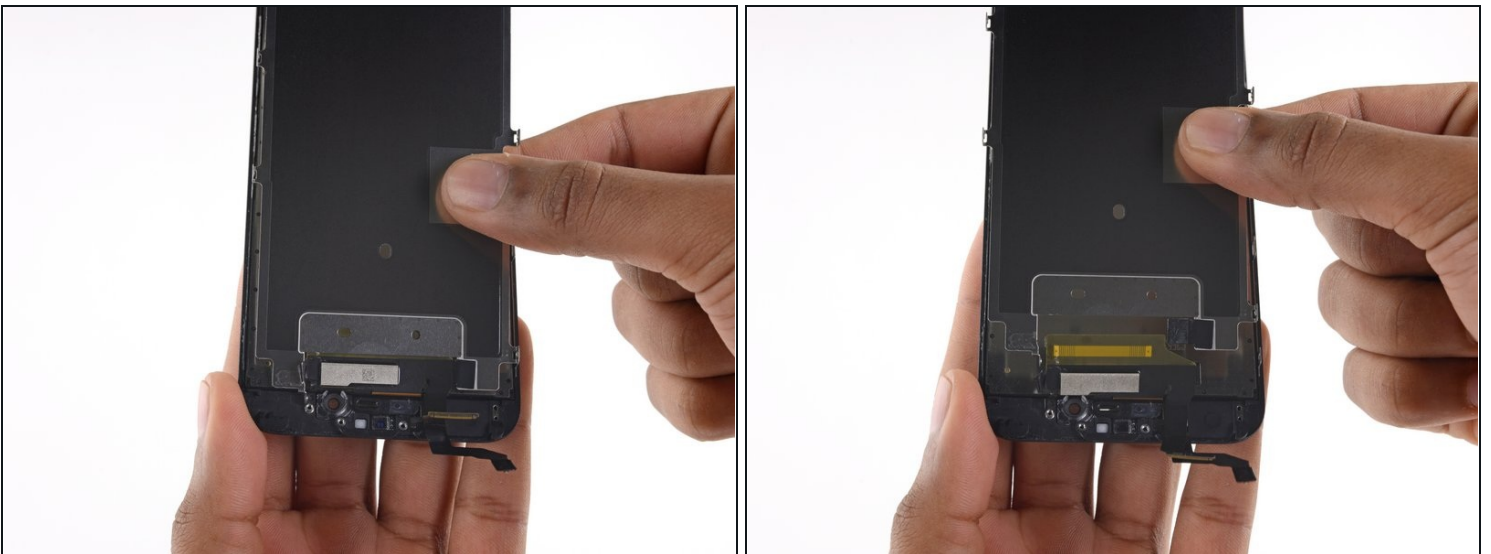


### Step 33



- Use a pair of tweezers to peel up the piece of tape from the EMI shield, near the front camera housing.

### Step 34



- Remove the EMI shield.
- ☑ When installing the EMI shield, orient it so that the metal cutout (shown at bottom center) lays over the top of the display cable assembly, while the piece of tape slides behind it.



---

To reassemble your device, follow these instructions in reverse order.