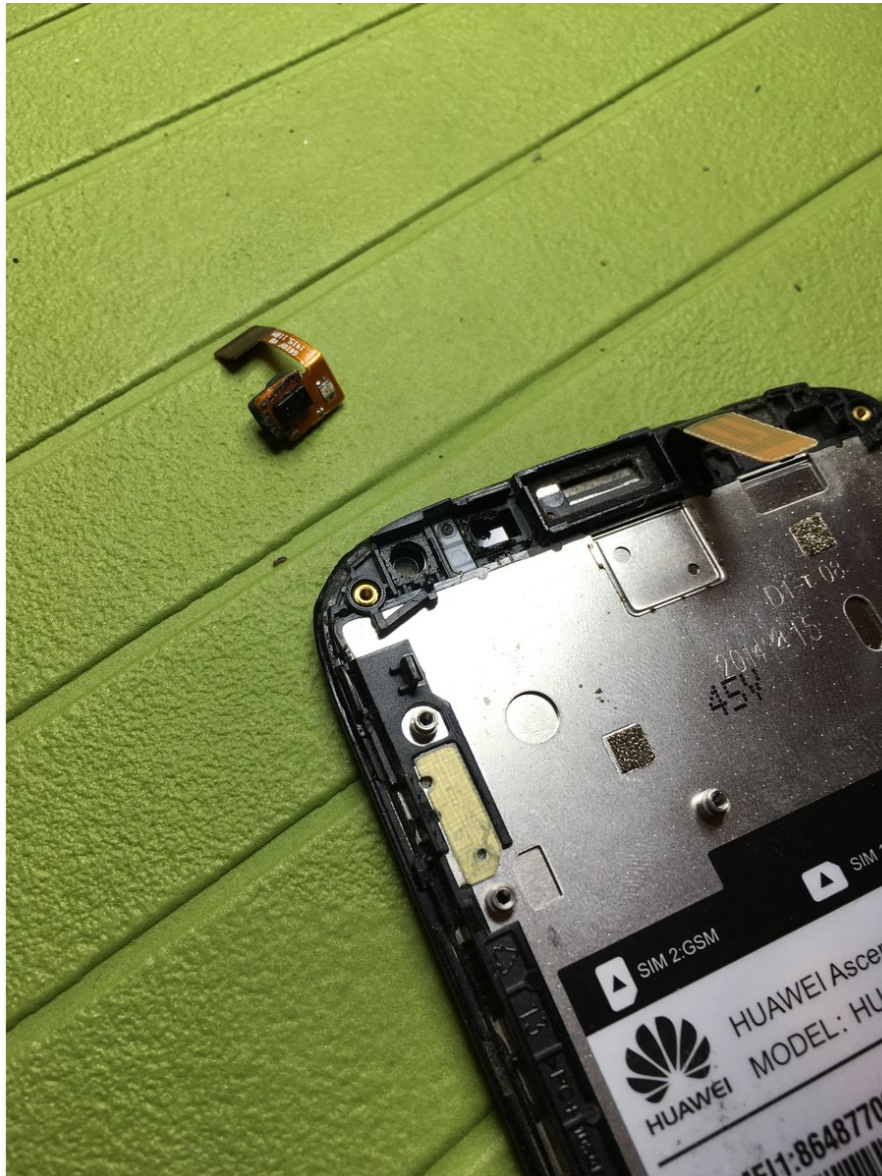




Huawei Ascend G610 Replacement proximity brightness sensor

Follow this repair guide if you have problems with the brightness sensor in your device

Written By: Smilzo



INTRODUCTION

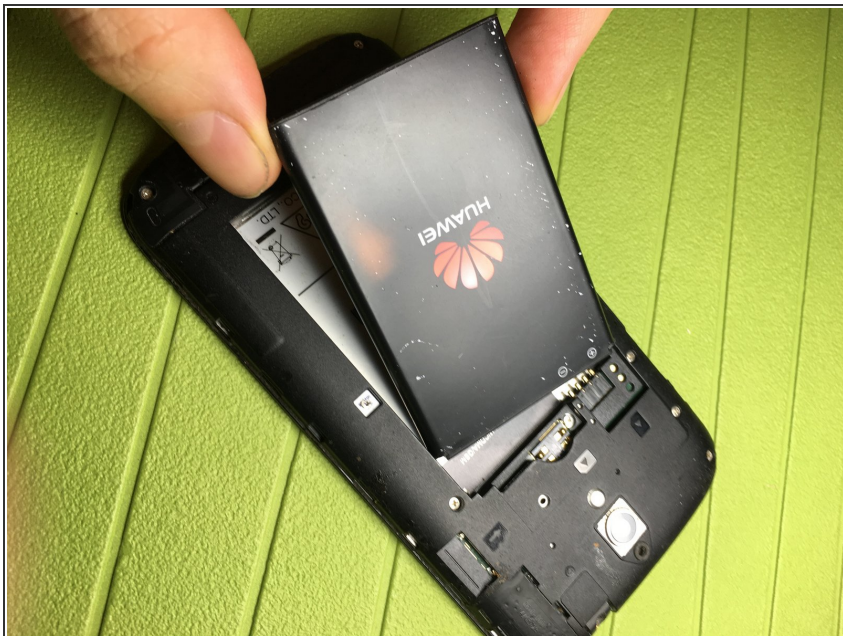
Follow this repair guide if you have problems with the brightness sensor in your device

Step 1 — Proximity brightness sensor



- Remove back cover

Step 2



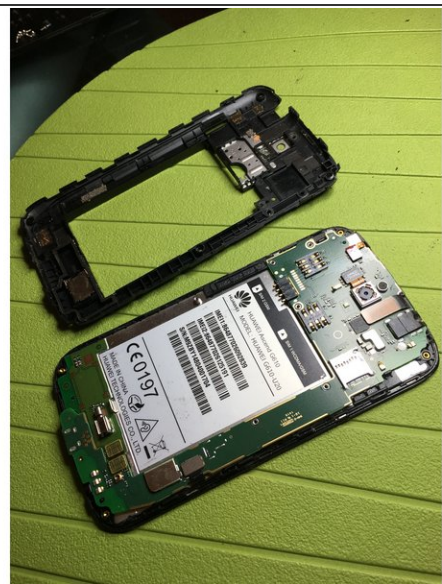
- Remove battery

Step 3



- With the help of a Phillips screwdriver, remove the 9 side screws, one is located under the adhesive

Step 4



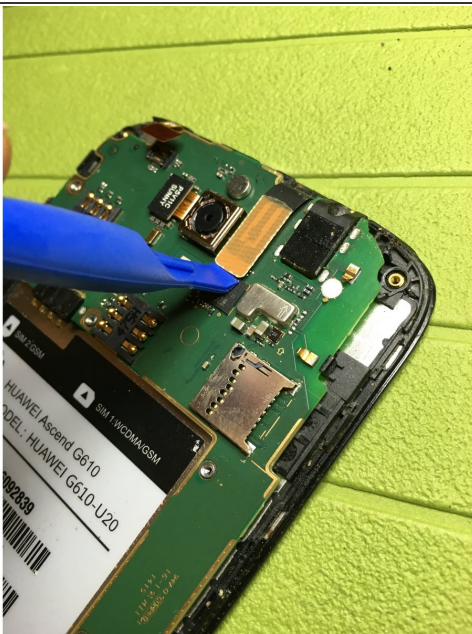
- With the help of a thin tool, pry up the side joints to remove the central body

Step 5



- Unhook the display connector

Step 6



- Unclip the touchscreen connector

Step 7



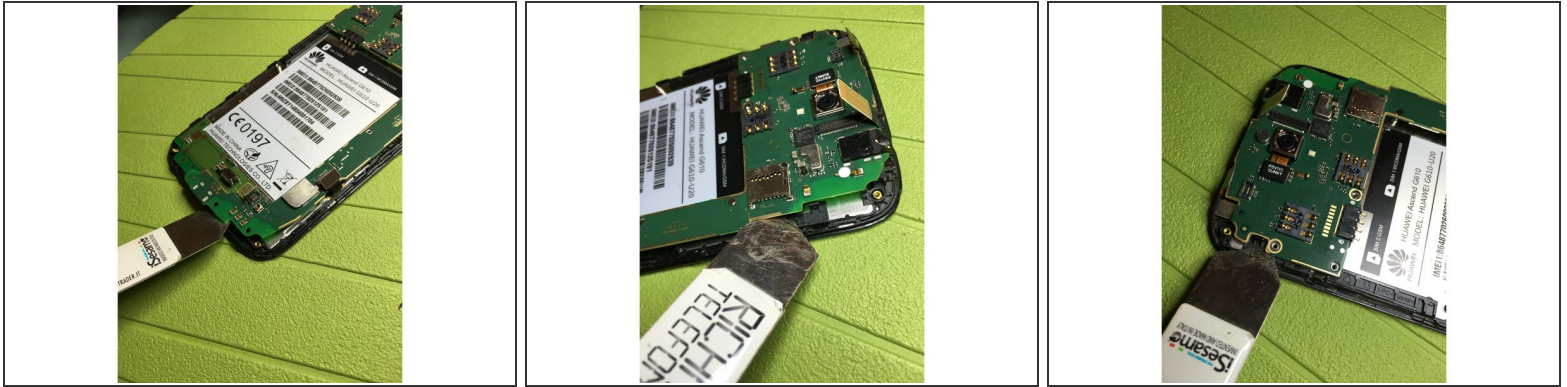
- Unclip the brightness sensor connector

Step 8



- Unhook the connector that connects the motherboard to the dock

Step 9



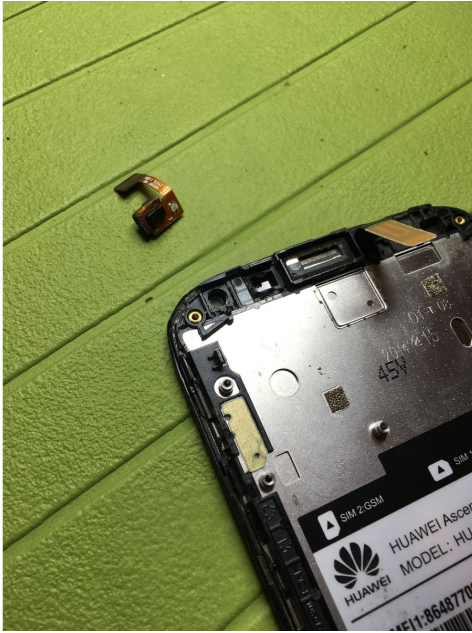
- With the help of a thin tool, uncouple the mother board interlocked on the plastic hooks

Step 10



- Remove motherboard

Step 11



- With the help of a heat source of the tweezers remove proximity and brightness sensor by replacing it with a new one

To reassemble the device, follow these instructions in reverse order.