



Dell Inspiron 8600 LCD Replacement

Follow this guide to remove the LCD Display.

Written By: Perry



INTRODUCTION

Follow this guide to remove the LCD Display.

TOOLS:

Phillips #00 Screwdriver (1)

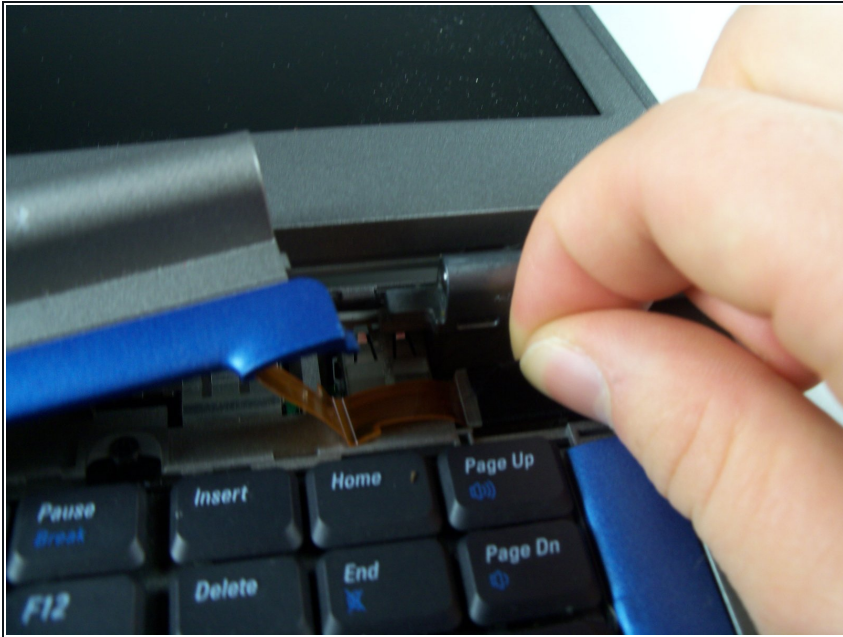
Step 1 — Hinge Cover



- Insert a spudger into the notch at the far left side of the top blue panel and pry the hinge cover off.
- You may need to pry the other side off as well. You can do this by inserting the spudger between the hinge and the top cover.

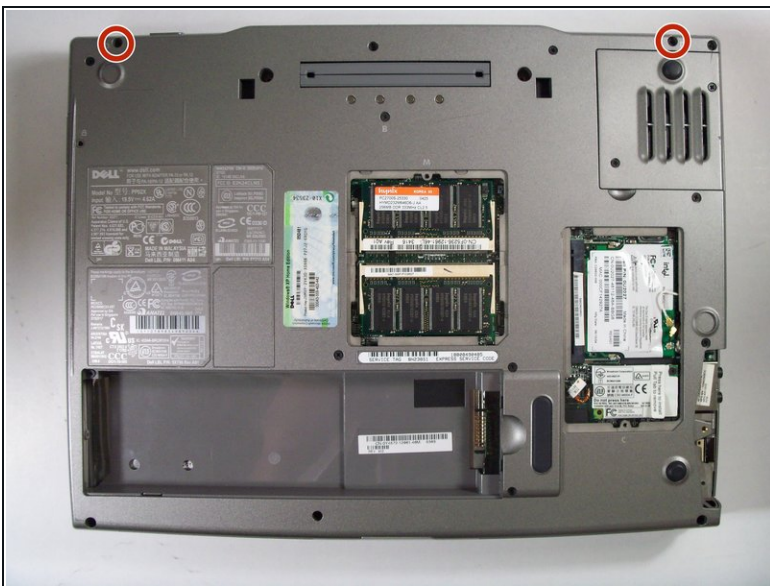
 Be careful of the wire attached to the underside of the hinge cover.

Step 2



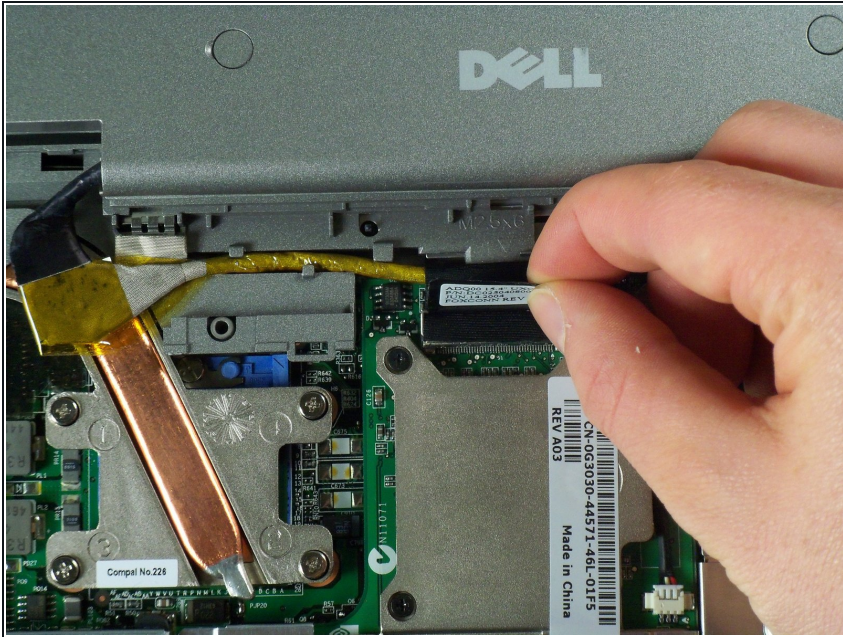
- Pull the small black tab on the right hand side of the laptop.
- You have now removed the hinge cover.

Step 3 — Display Module



- Flip the laptop over and remove the indicated screws.
- Flip the laptop back over.
- Find the two places where the display module is attached to the base of the computer.

Step 4



- Disconnect the video card from the display module by gently lifting upwards on the black tab.

Step 5



- Lift the display module directly upwards from the base of the computer.

Step 6



- Now remove the display module.

Step 7 — LCD



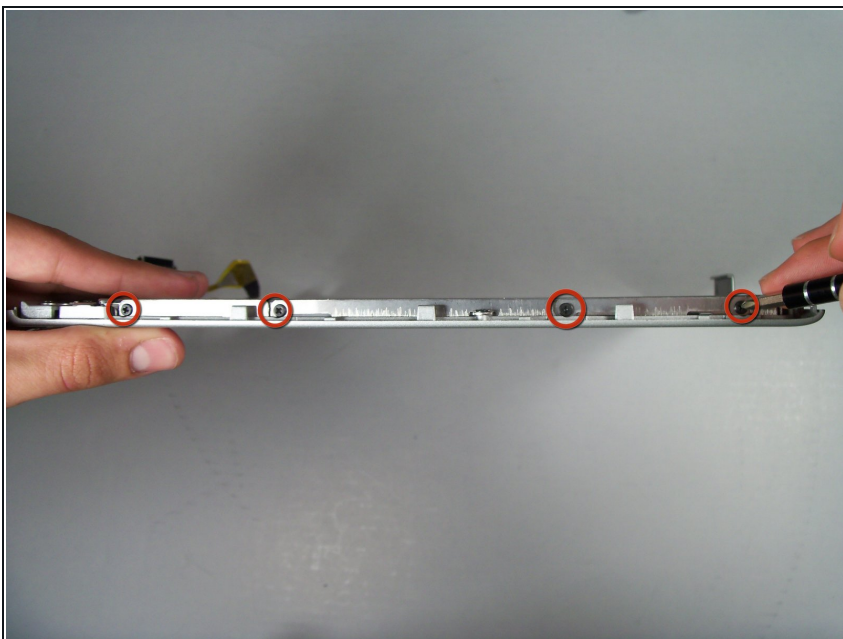
- First, remove the plastic tabs that are covering the interior screws.
- After removing the tabs, remove the interior screws using a #1 Philips Screwdriver.
- Note there are 8 tabs and 8 screws in total.

Step 8



- Now that the screws are removed, press the plastic casing inward to loosen the case. Then remove the plastic case from the monitor unit.

Step 9



- Using a Philips #1 screwdriver remove the screws holding the LCD in place.
- ⓘ Note there are 8 screws in total for this step, 4 on each side of the unit.

Step 10



- Remove the broken LCD unit, and replace with new unit.

To reassemble your device, follow these instructions in reverse order.