



# HTC Touch Pro 2 Logic Board Replacement

The HTC Touch Pro 2 is a smartphone with...

Written By: Melinda Phan



# INTRODUCTION

*The HTC Touch Pro 2 is a smartphone with internet access, 3-G/LTE bandwidth, and extended battery life.*

*Before moving forward, make sure you've gone over the [Troubleshooting](#) page to ensure the issue is with the logic board. General issues regarding logic boards can be caused by water damage, overheating, a chipped board preventing it from turning on, or usage over a long period without cleaning.*

*This guide's purpose is to assist you in replacing the logic board, a printed circuit board that contains logic circuits responsible for managing and controlling the data flow between the CPU, RAM, and storage devices.*

*CPU - Central Processing Unit, meant to process the input and output of the device aka. "The Control Center"*

*RAM - Random Access Memory, meant to temporarily store information for quick access*

---

## TOOLS:

[Phillips #00 Screwdriver](#) (1)

[Spudger](#) (1)

[iFixit Opening Tool](#) (1)

---

## Step 1 — Battery



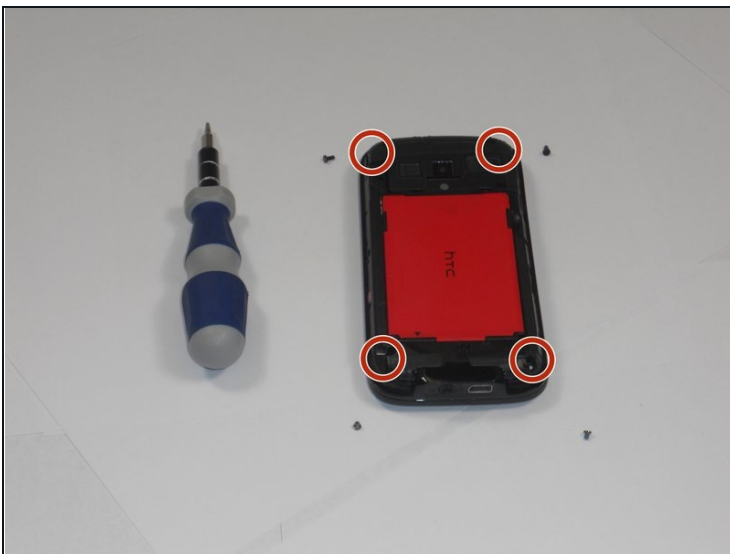
- Apply pressure and slide upward to remove back cover.
- Lift the back cover up away from the phone.

## Step 2



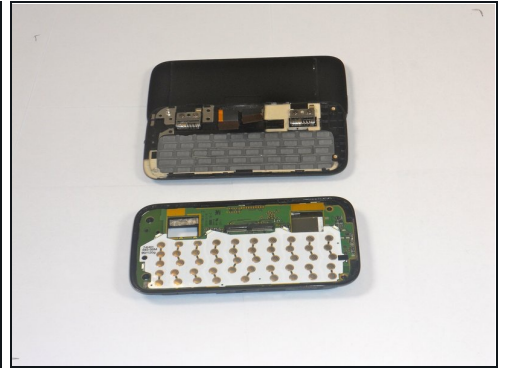
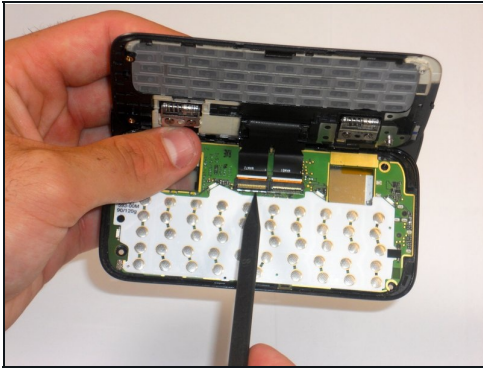
- Lift battery upward on the upper right-hand side to remove it.
- Check the battery to make sure there's no bent corners

## Step 3 — Housing



- Using a T5 screwdriver, remove the four screws in corners as shown.
- Lift the top portion of the rear case.  
⚠ There is a ribbon attached on the back of this part that requires caution to remove.

## Step 4



- Using an iFixIt Plastic Tool, detach the plastic casing from the keyboard. This may require some force.
- Using a spudger or other thin tool, carefully pry up ZIF connectors as shown. This will allow the black ribbons to detach from the keyboard.
- Slide the two parts away from each other so that the black ribbons slide through the slots and you will now have housing into two parts.

---

To reassemble your device, follow these instructions in reverse order.