



Written By: Kelsea Weber



INTRODUCTION

This guide gives you a look at the major components of the Samsung NX Mini and provides complete disassembly instructions.

We highly suggest you use a [magnetic project mat](#) or an organization tray. This camera has **many** different types of screws and keeping them organized is key to proper reassembly.



TOOLS:

- [Phillips #00 Screwdriver](#) (1)
 - [Spudger](#) (1)
 - [Tweezers](#) (1)
 - [Magnetic Project Mat](#) (1)
-

Step 1 — Battery



- Orient the camera so the button panel and LCD are facing you.
- Use a spudger or fingernail to open the battery compartment on the right side of the camera.

Step 2



- Push the blue trapdoor to the left to release the battery, and remove the battery.

 There is no battery shown in this photo.

Step 3 — Front Case



- Use a Phillips #00 screwdriver to remove the 4 mm screw inside the battery compartment.

Step 4



- Remove the 4 mm Phillips #00 screw hiding in the external flash port.

Step 5



- Remove the four 5 mm Phillips #00 screws from the lens assembly.

Step 6



- Remove the metal lens mount by hand or with tweezers.
- ⚠ Be careful not to touch the sensor in the center of the lens assembly.

Step 7



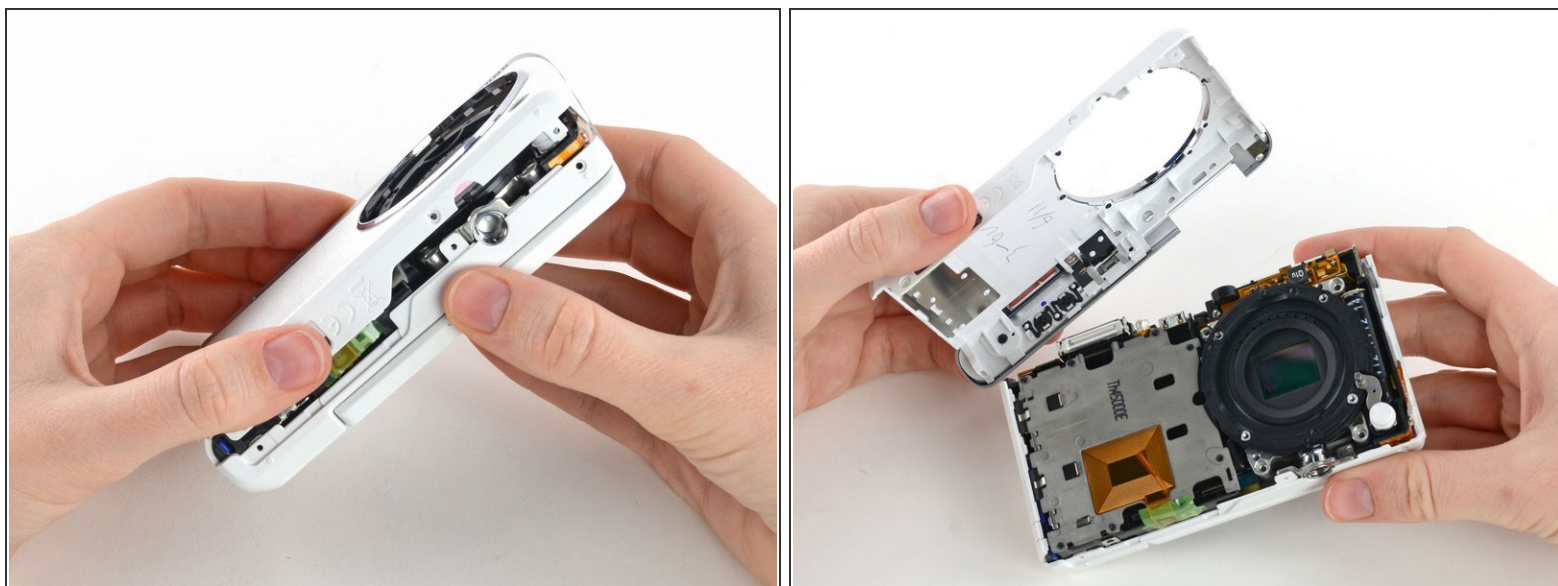
- Use tweezers to remove the inner metal ring.

Step 8



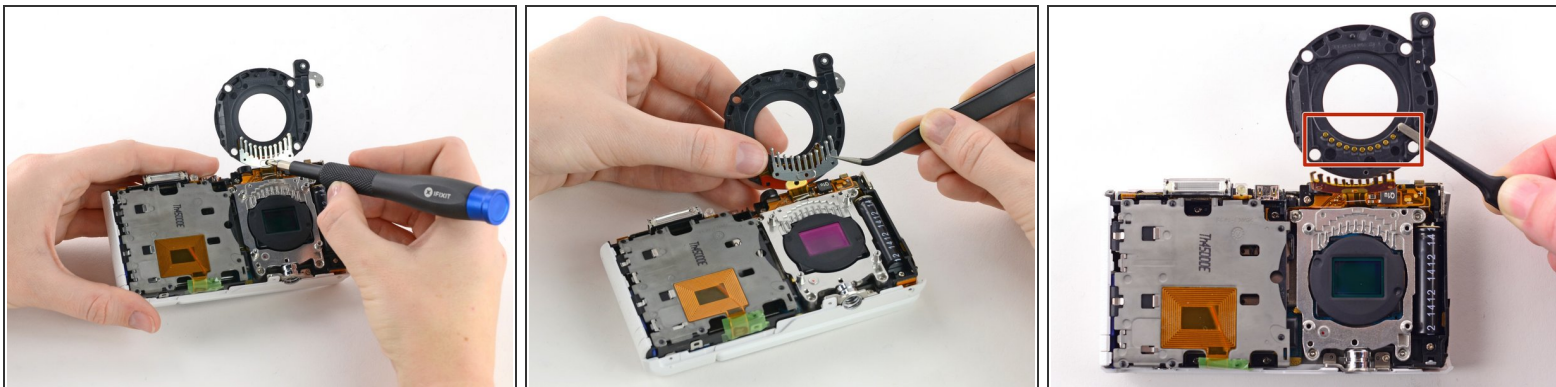
- Use a Phillips #00 screwdriver to remove the three 4 mm screws from the bottom of the case.

Step 9



- Use your hands to slowly pull the front casing away from the camera.
- ⓘ The case is attached with multiple clips that may make a cracking noise as you pull it away from the camera.

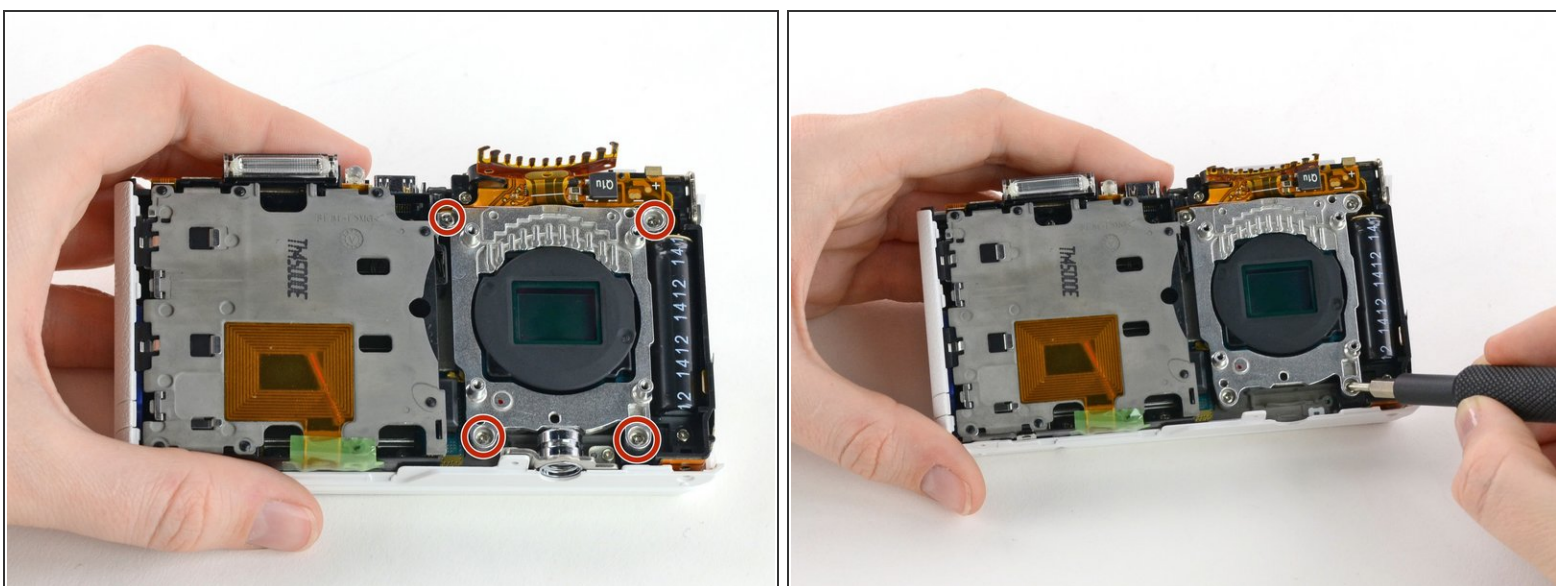
Step 10 — Sensor



- Gently flip the sensor cover back to expose the screw attaching the sensor cover to the ribbon cable.
- Use a Phillips #00 screwdriver to remove the 3 mm screw from the sensor cover.
- Use tweezers to remove the metal contact cover. Be sure to carefully remove the cover so the gold contacts remain in place.

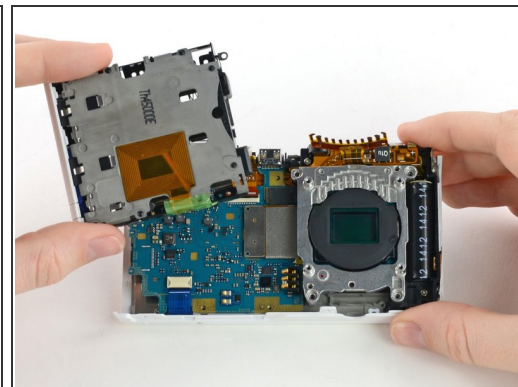
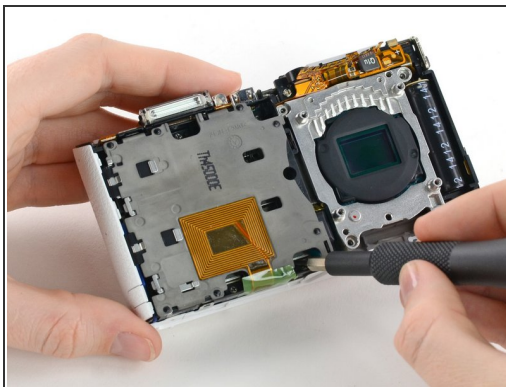
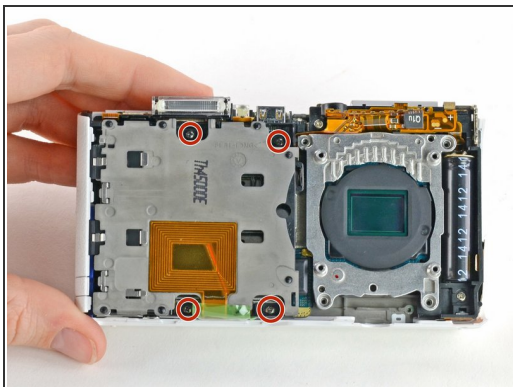
⚠ The gold lens contacts lying beneath the ribbon cable become loose when the screw and contact cover are removed.

Step 11



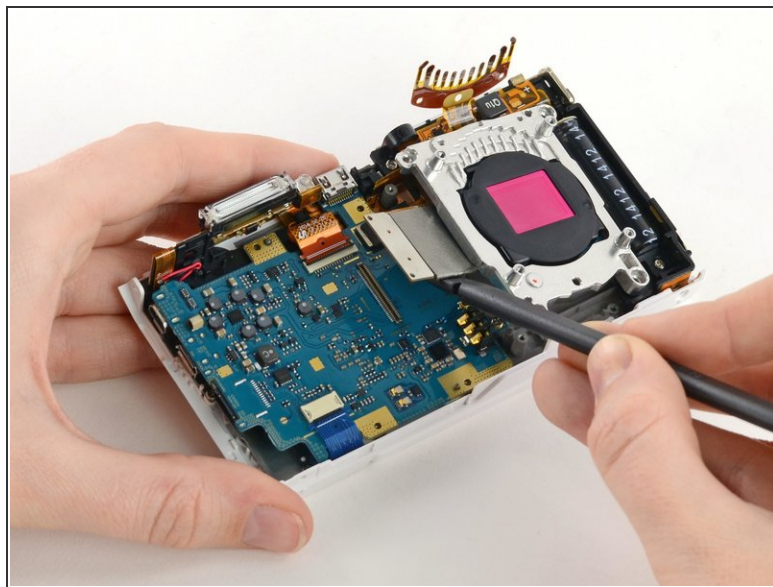
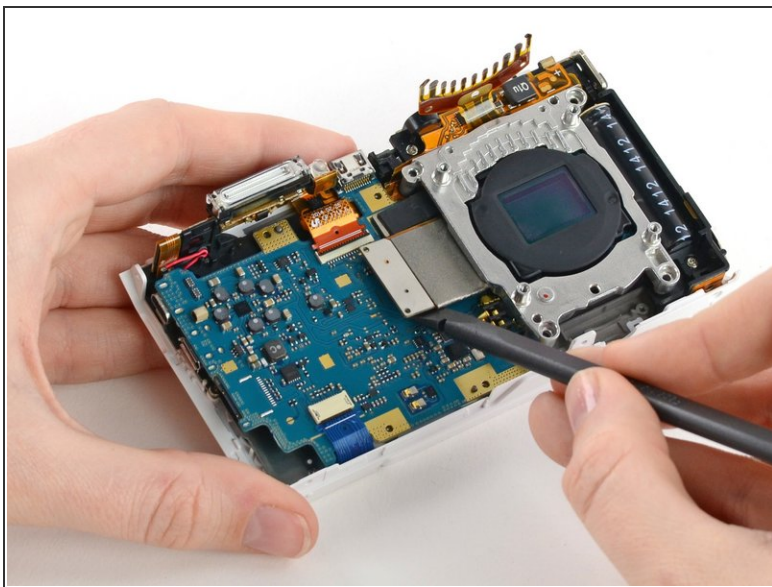
- Remove the four 4 mm Phillips #00 screws holding the sensor mount in place.

Step 12



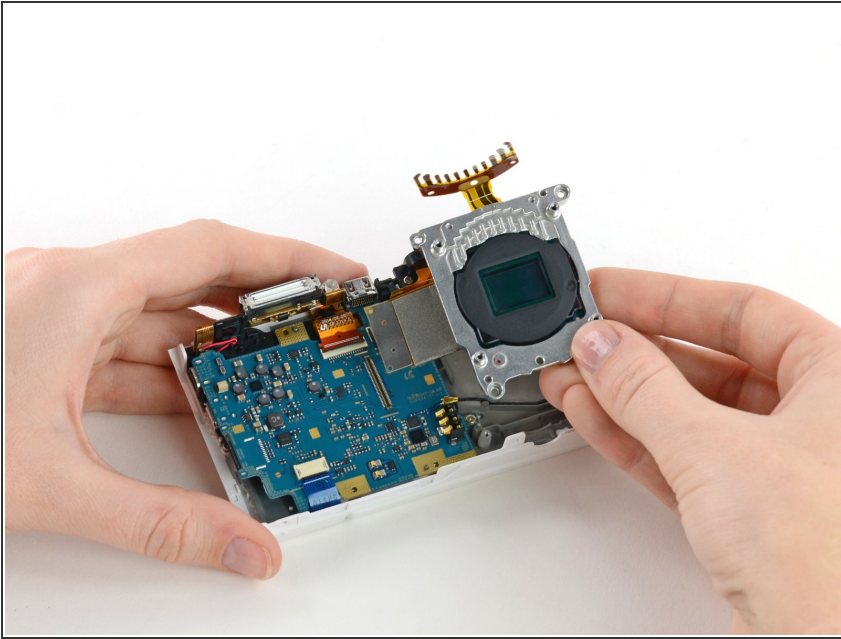
- Remove the four 4 mm Phillips #00 screws securing the battery compartment to the mother board.
- Remove the battery compartment.

Step 13



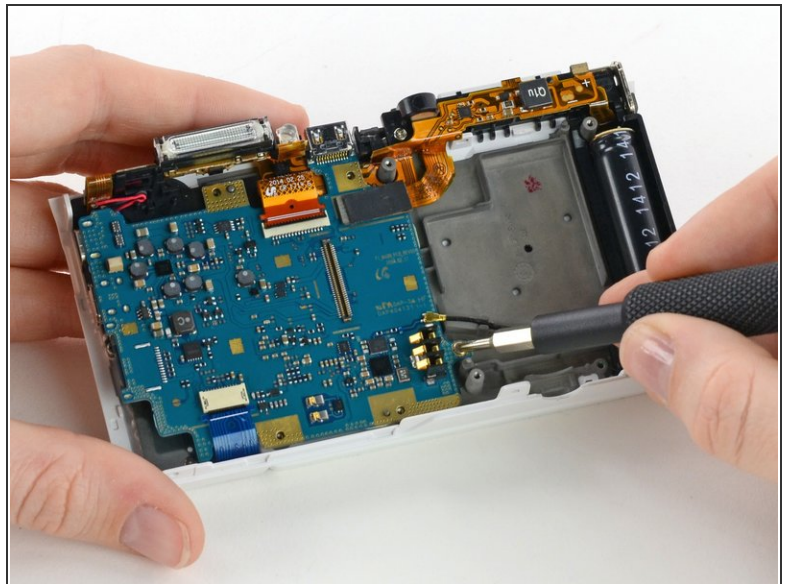
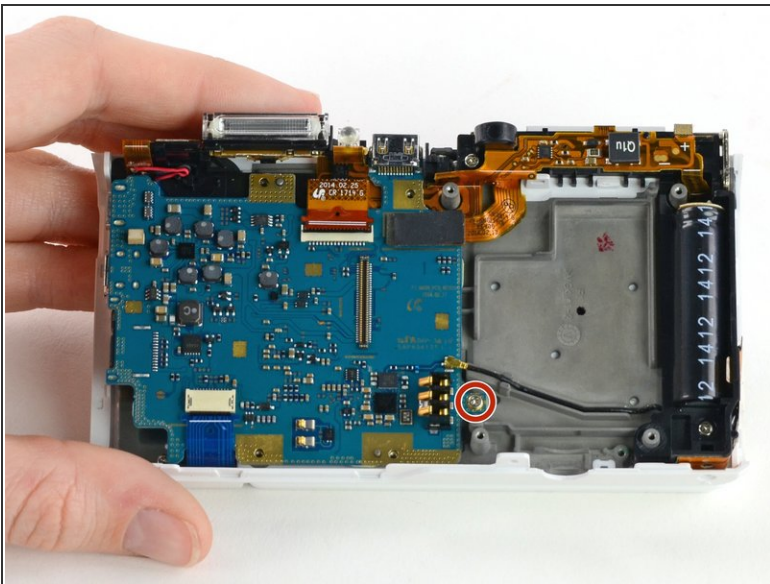
- Use a spudger to disconnect the ribbon cable connecting the image sensor to the motherboard.

Step 14



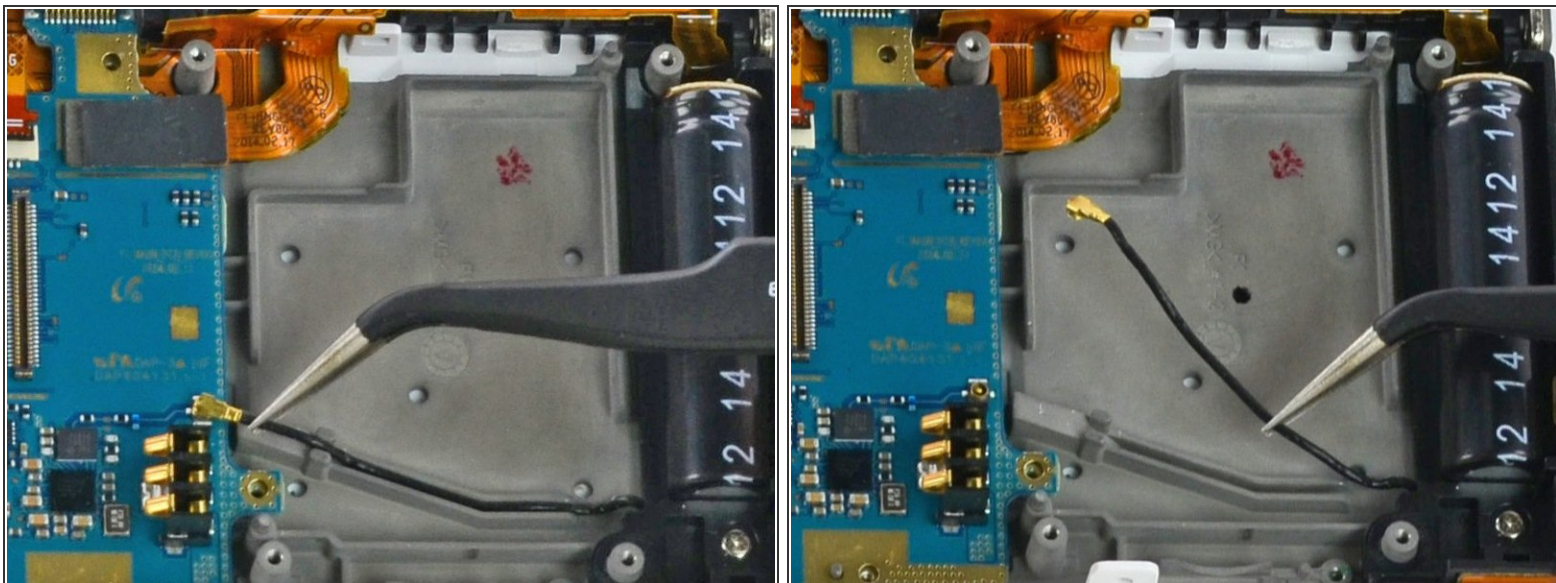
- Gently remove the sensor mount from the camera case.

Step 15 — Motherboard



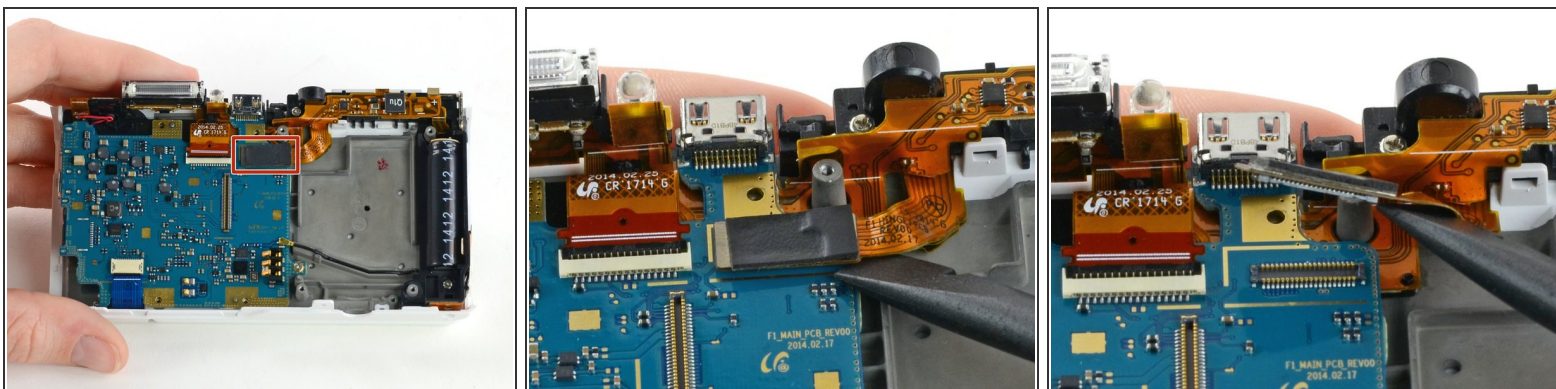
- Use a Phillips #00 screwdriver to remove the 3 mm screw located below the wifi antenna.

Step 16



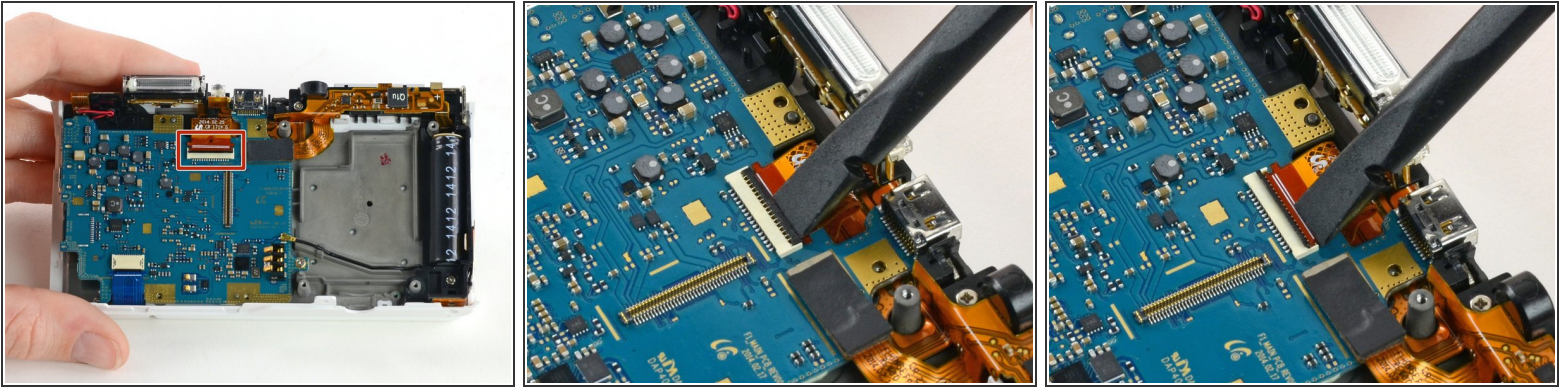
- Use tweezers to disconnect the wifi antenna from the motherboard.

Step 17



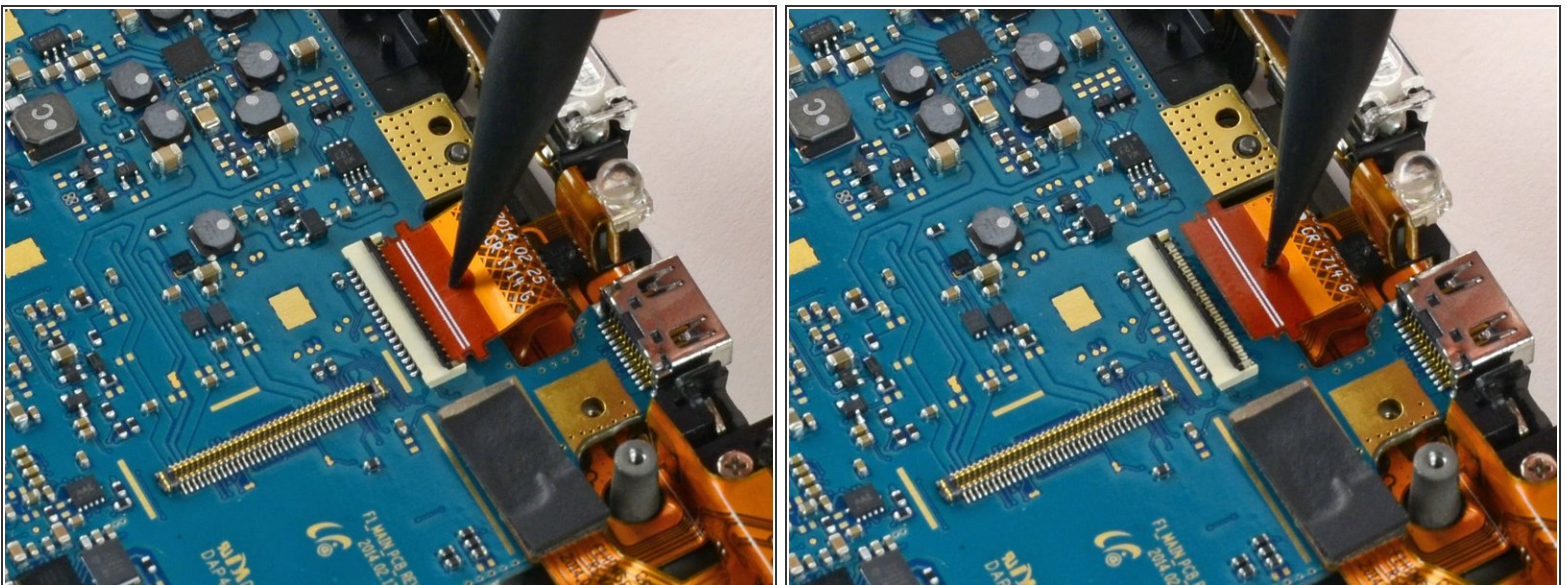
- Use a spudger to disconnect the LCD ribbon cable by prying it straight up from the motherboard.

Step 18



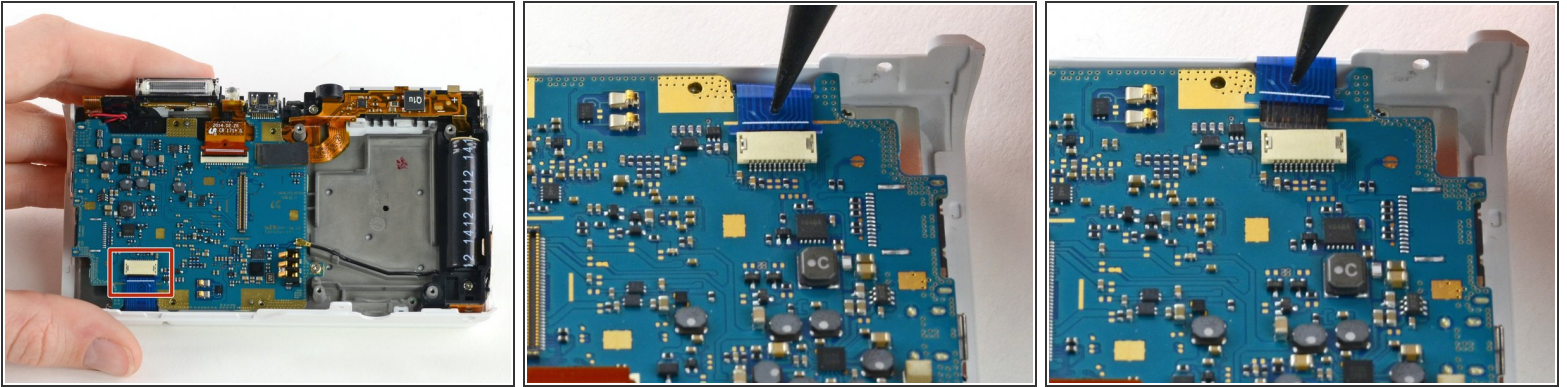
- Use a spudger to unlock the topmost ZIF connector by flipping open the black flap.

Step 19



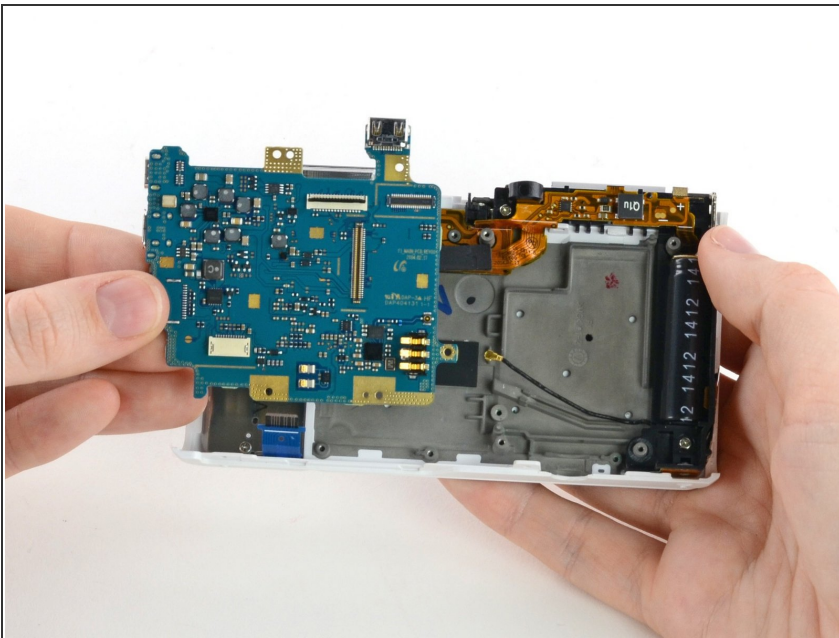
- Insert the pointed end of a spudger into the hole in the middle of the ribbon cable.
- Gently pull the spudger back to slide the ribbon cable out of its connector.

Step 20



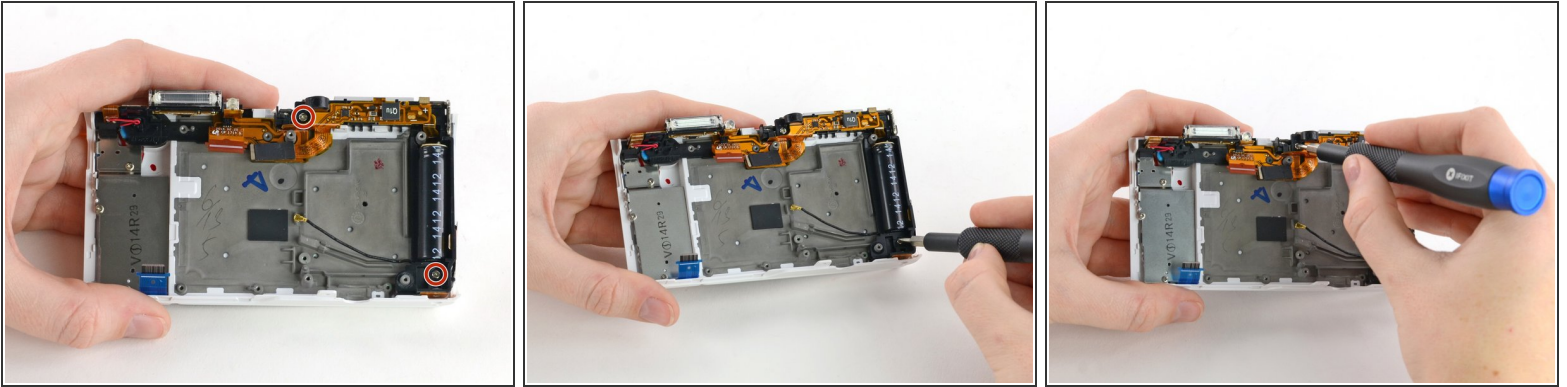
- Disconnect the blue ribbon cable from the motherboard.
 - Insert the pointed end of a spudger into the hole in the top of the ribbon.
 - Gently pull the ribbon from the connector.

Step 21



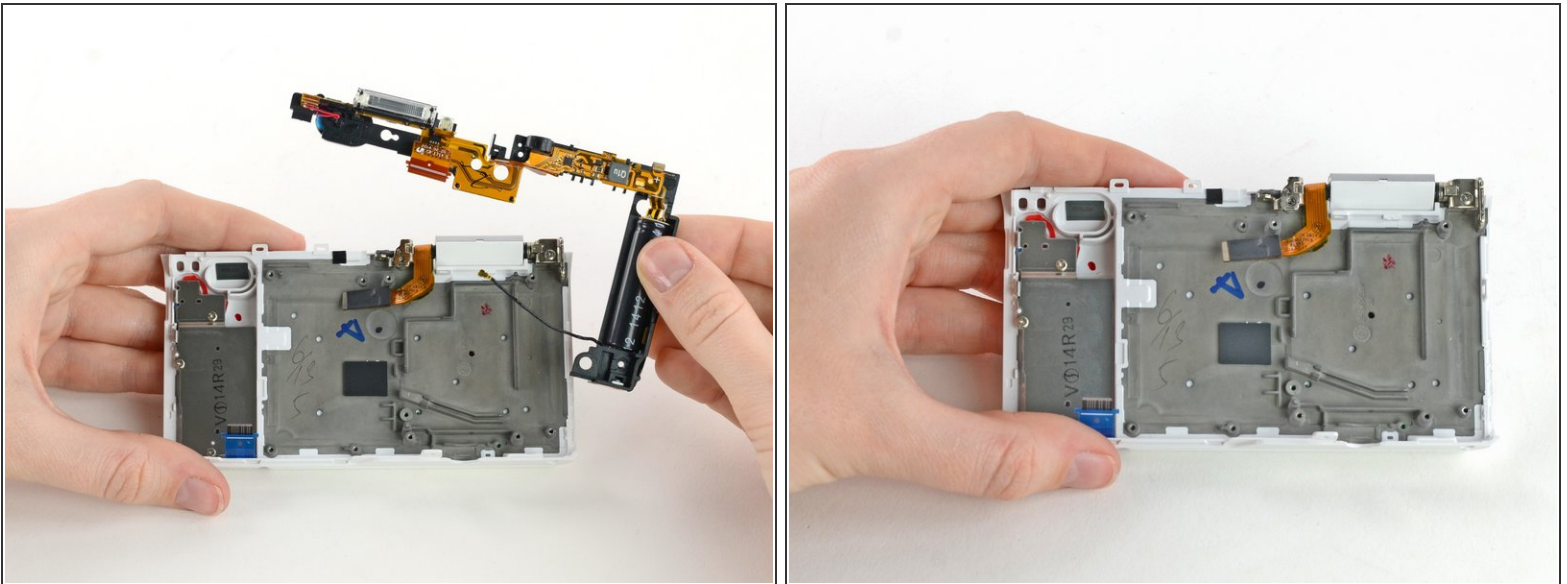
- Remove the motherboard from the camera.

Step 22 — Flash Assembly



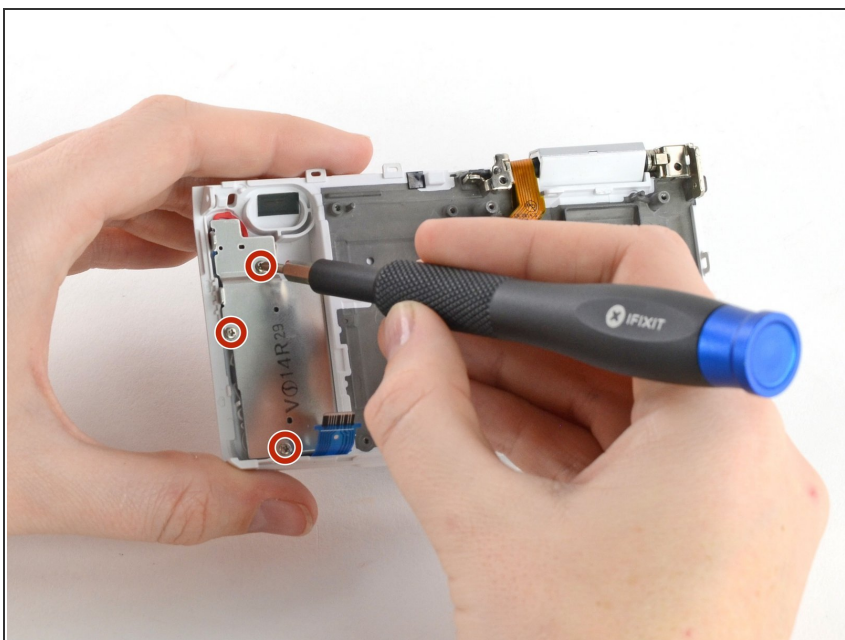
- Use a Phillips #00 screwdriver to remove the two 5 mm screws holding the flash assembly to the camera case.

Step 23



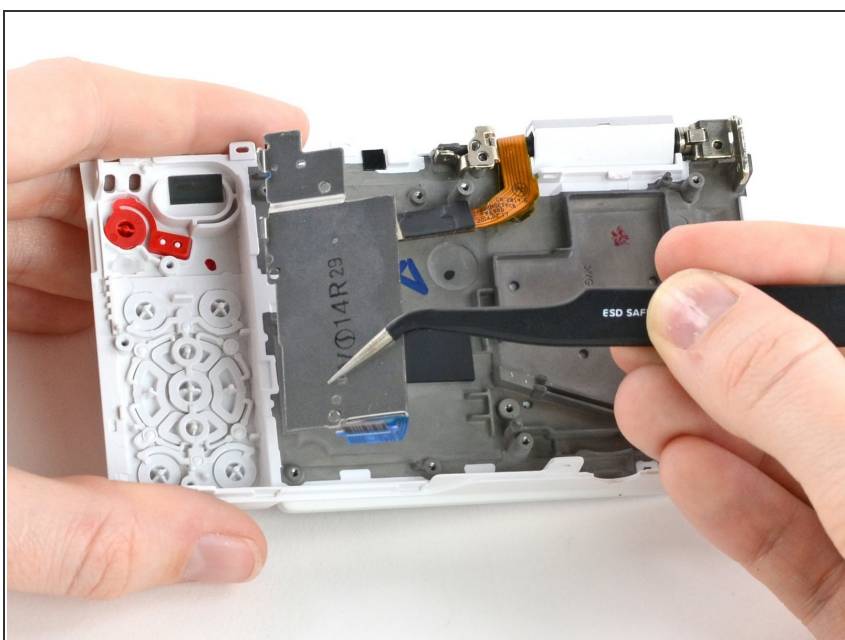
- Remove the flash assembly by gently pulling it away from the case.
- ⓘ You may need to use a spudger to release some of the clips holding the assembly in place.
- ⚠ Avoid touching the ends of the capacitor (the large black cylinder on the right). Capacitors that haven't been discharged may cause electric shock. Learn how to discharge a capacitor [here](#).

Step 24 — Button Panel



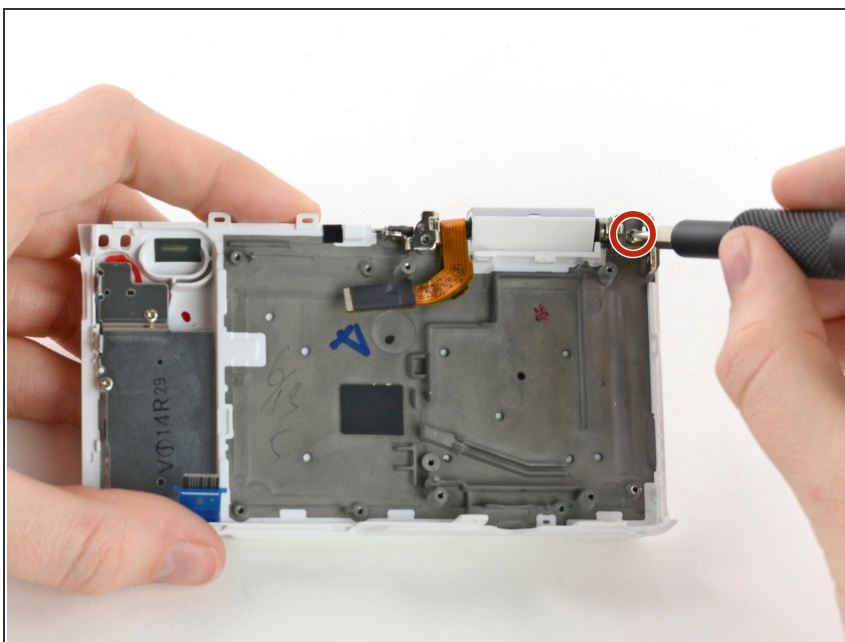
- Remove the three 4 mm Phillips #00 screws securing the button panel to the camera case.

Step 25



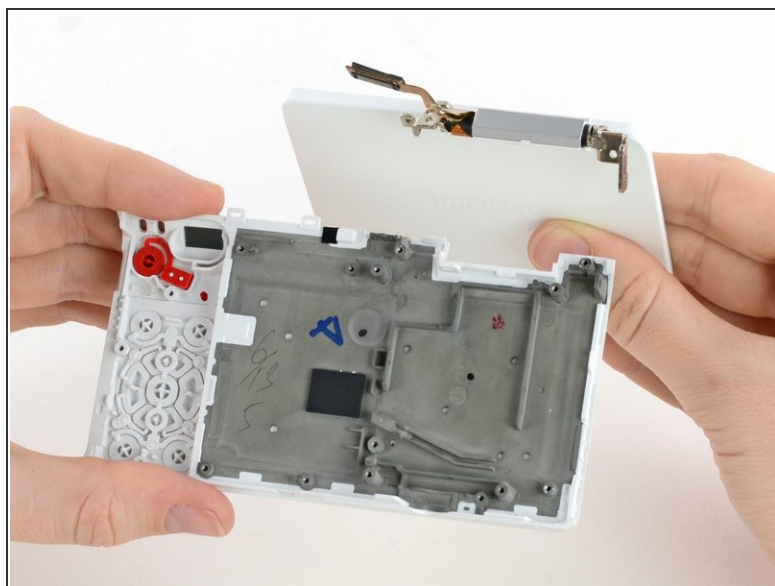
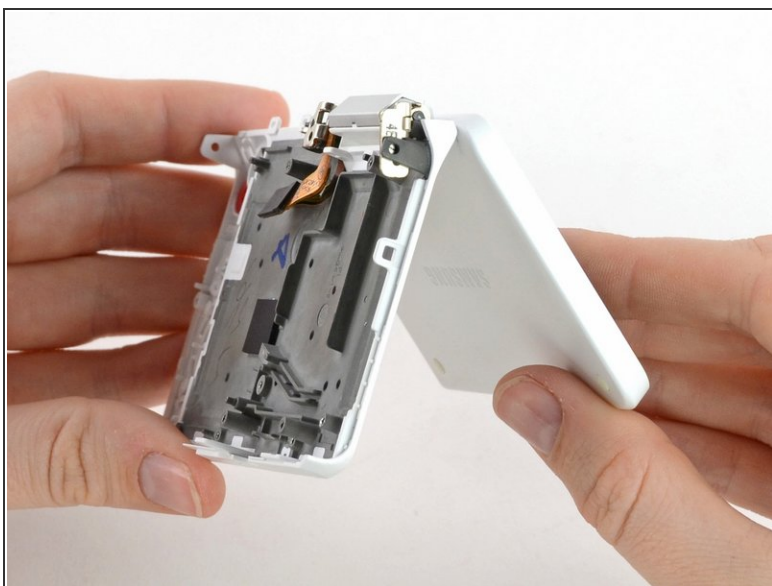
- Use tweezers to lift the button panel cover away from the case.

Step 26 — LCD



- Remove the 5 mm Phillips #00 screw in the top right corner of the LCD assembly.

Step 27



- Tilt and wiggle the LCD to remove it from the case.

Step 28 — Samsung NX Mini Disassembly



- You have disassembled the Samsung NX Mini!
- ⓘ The capacitor can be removed from the flash assembly by desoldering. Learn about soldering techniques [here](#).

To reassemble your device, follow these instructions in reverse order.