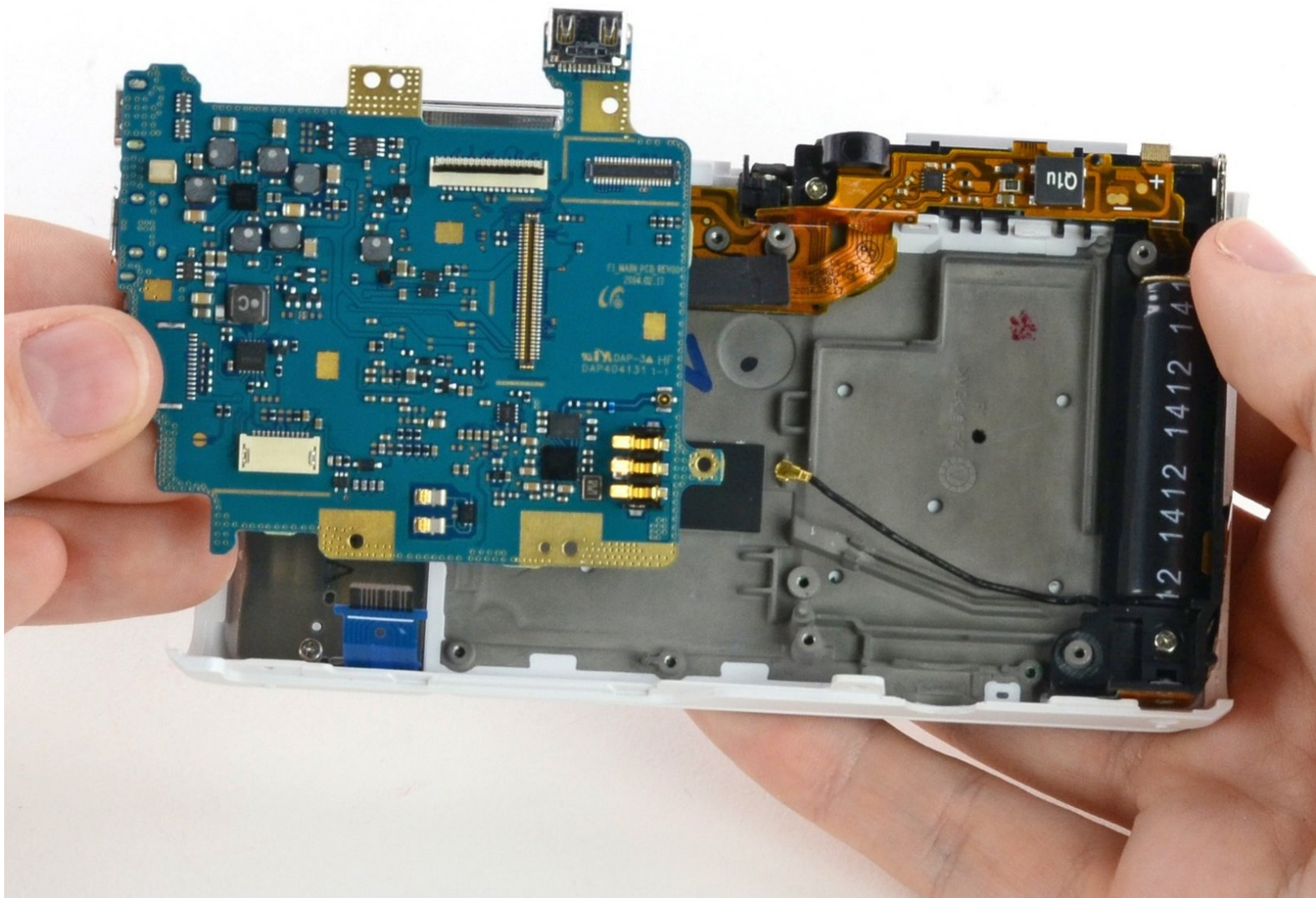




# Samsung NX Mini Motherboard Replacement

This guide will show you how to replace the motherboard to the Samsung NX Mini.

Written By: Kelsea Weber



## INTRODUCTION

Is your camera exhibiting symptoms of a faulty motherboard? This guide will help you access the motherboard to replace it or make necessary repairs.

---

### TOOLS:

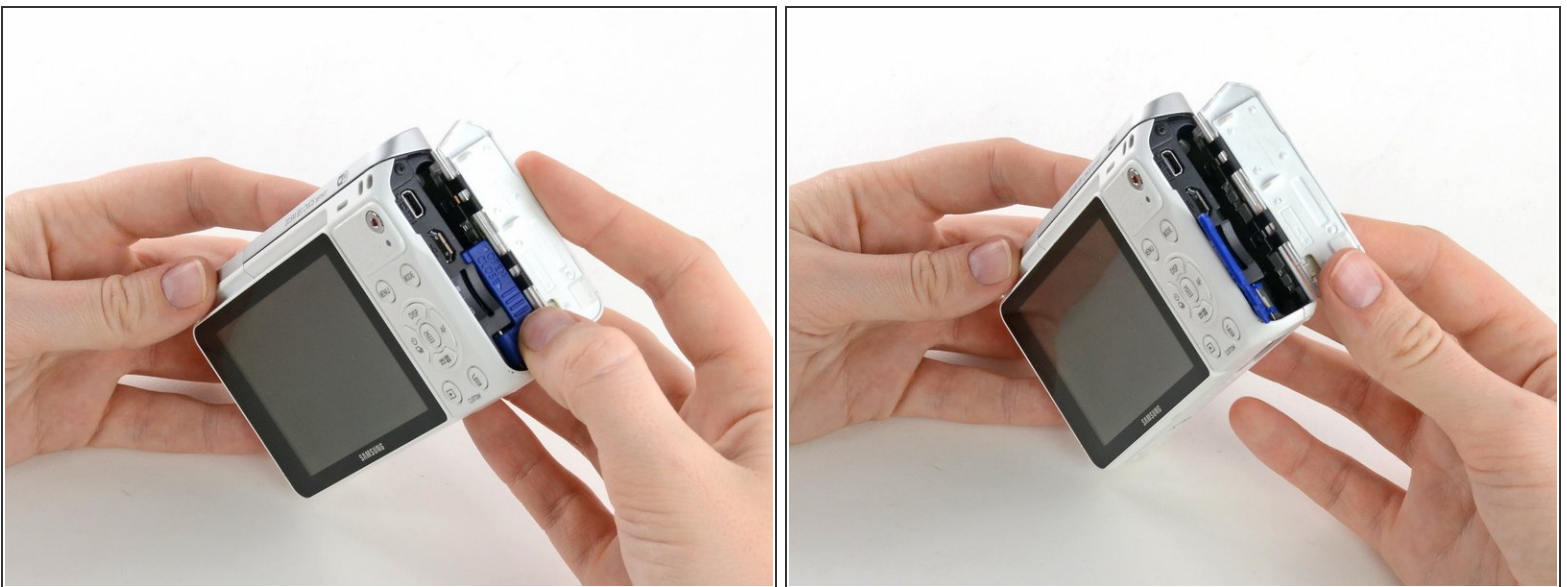
- [Phillips #00 Screwdriver](#) (1)
  - [Spudger](#) (1)
  - [Tweezers](#) (1)
  - [Magnetic Project Mat](#) (1)
-


## Step 1 — Battery



- Orient the camera so the button panel and LCD are facing you.
- Use a spudger or fingernail to open the battery compartment on the right side of the camera.

## Step 2



- Push the blue trapdoor to the left to release the battery, and remove the battery.
-  There is no battery shown in this photo.

## Step 3 — Front Case



- Use a Phillips #00 screwdriver to remove the 4 mm screw inside the battery compartment.

## Step 4



- Remove the 4 mm Phillips #00 screw hiding in the external flash port.

## Step 5



- Remove the four 5 mm Phillips #00 screws from the lens assembly.

## Step 6



- Remove the metal lens mount by hand or with tweezers.
- ⚠ Be careful not to touch the sensor in the center of the lens assembly.

## Step 7



- Use tweezers to remove the inner metal ring.

## Step 8



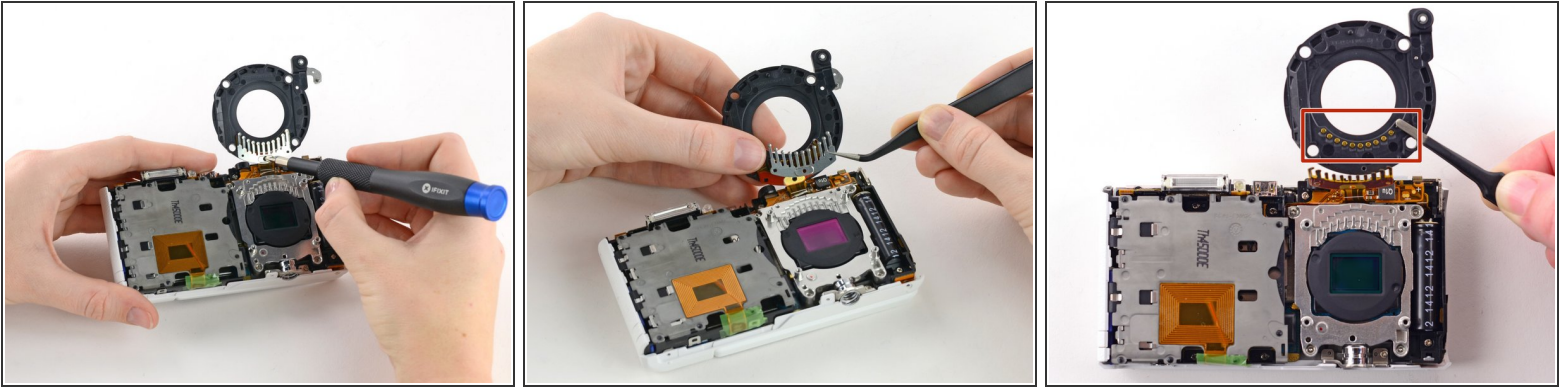
- Use a Phillips #00 screwdriver to remove the three 4 mm screws from the bottom of the case.

## Step 9



- Use your hands to slowly pull the front casing away from the camera.
- ⓘ The case is attached with multiple clips that may make a cracking noise as you pull it away from the camera.

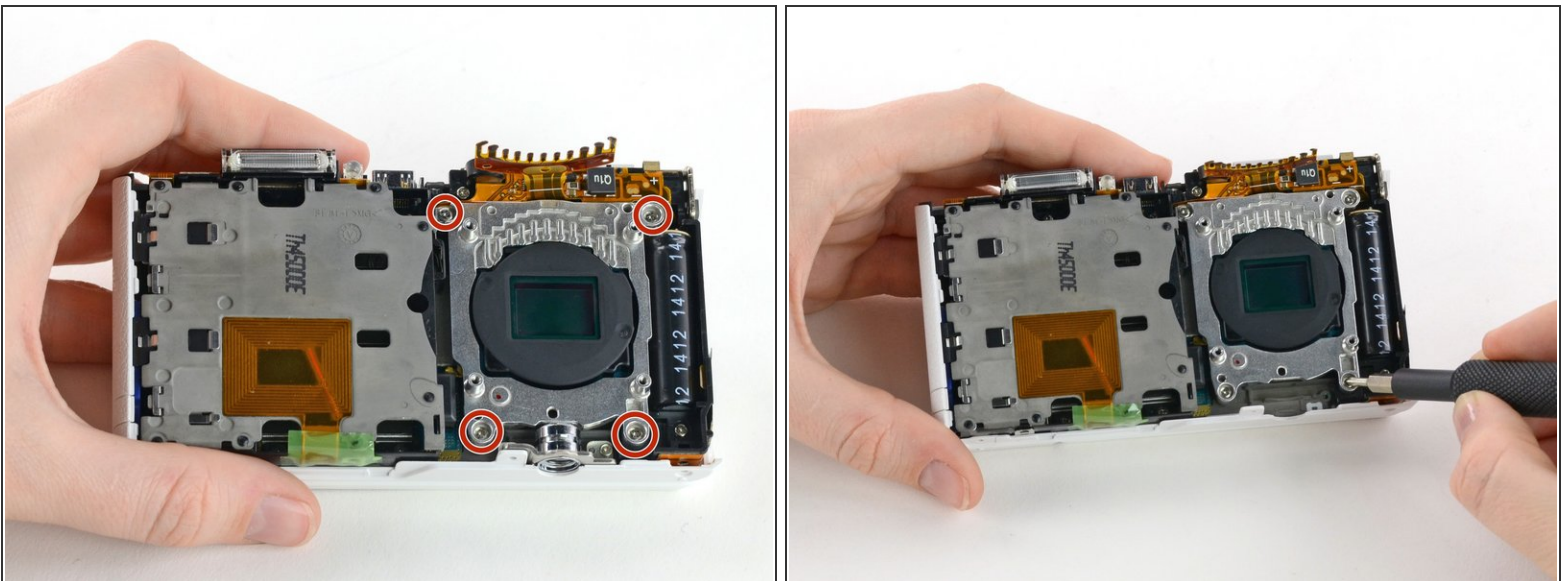
## Step 10 — Sensor



- Gently flip the sensor cover back to expose the screw attaching the sensor cover to the ribbon cable.
- Use a Phillips #00 screwdriver to remove the 3 mm screw from the sensor cover.
- Use tweezers to remove the metal contact cover. Be sure to carefully remove the cover so the gold contacts remain in place.

⚠ The gold lens contacts lying beneath the ribbon cable become loose when the screw and contact cover are removed.

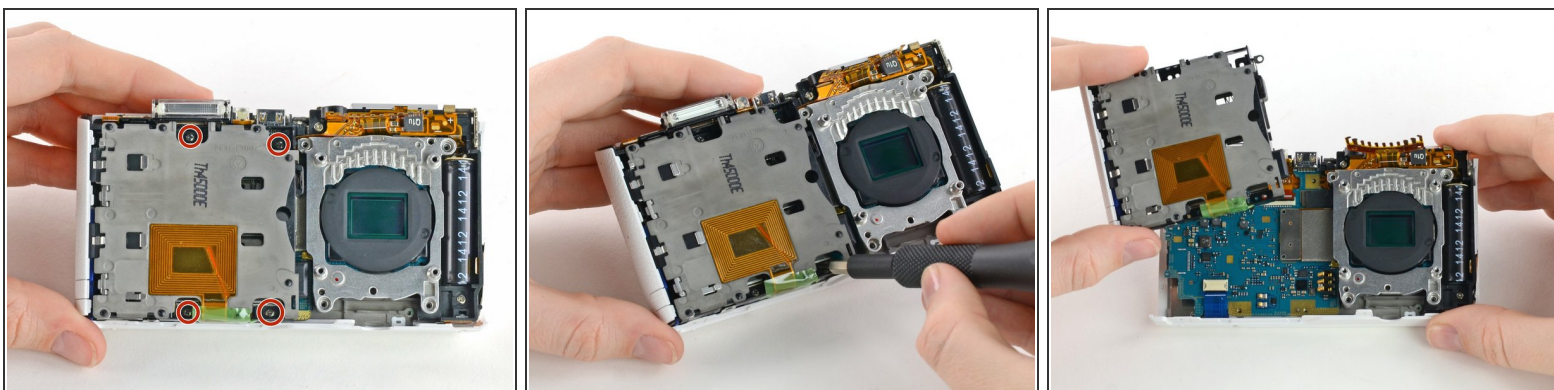
## Step 11



- Remove the four 4 mm Phillips #00 screws holding the sensor mount in place.

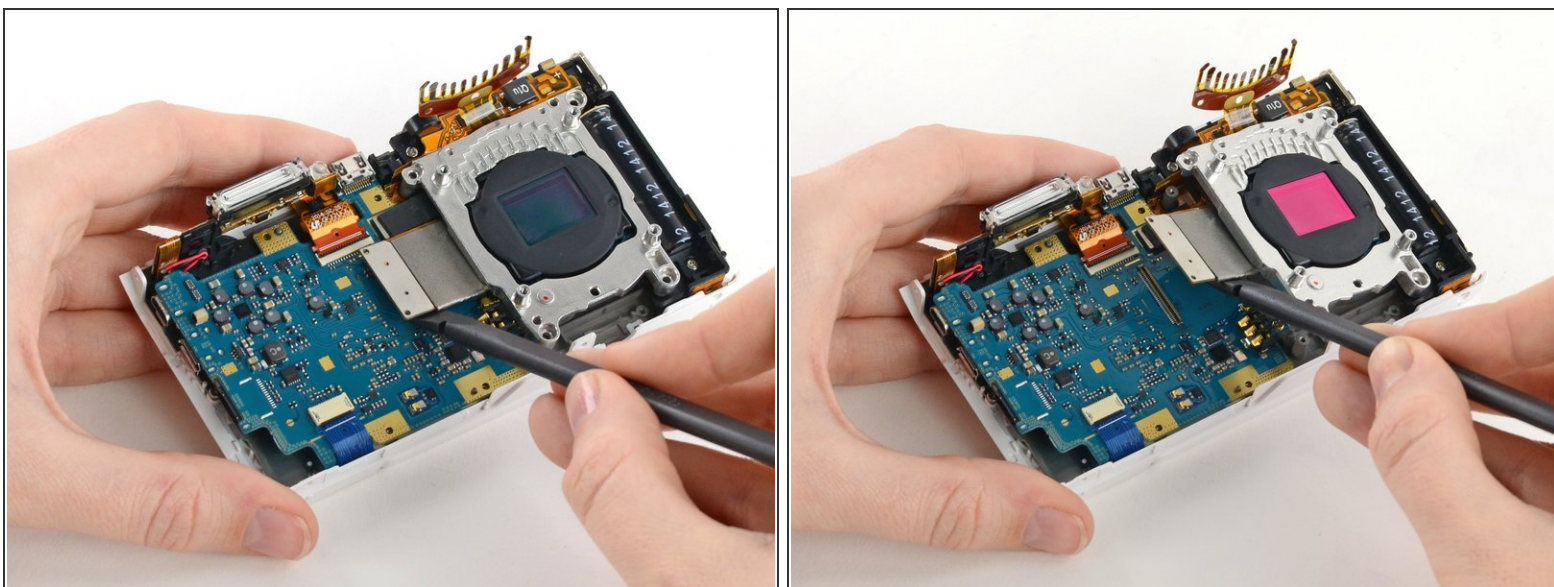
This document was generated on 2021-03-09 03:40:59 PM (MST).

## Step 12



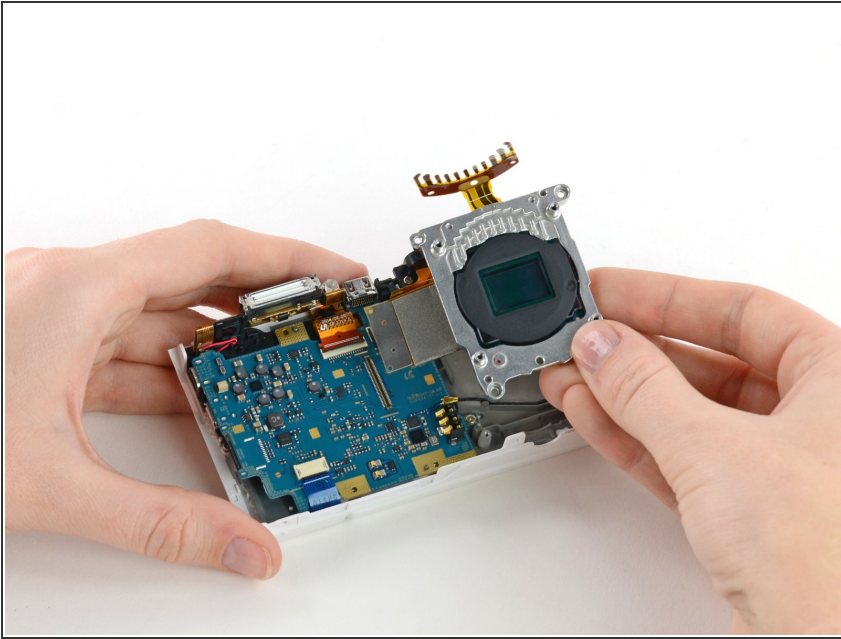
- Remove the four 4 mm Phillips #00 screws securing the battery compartment to the mother board.
- Remove the battery compartment.

## Step 13



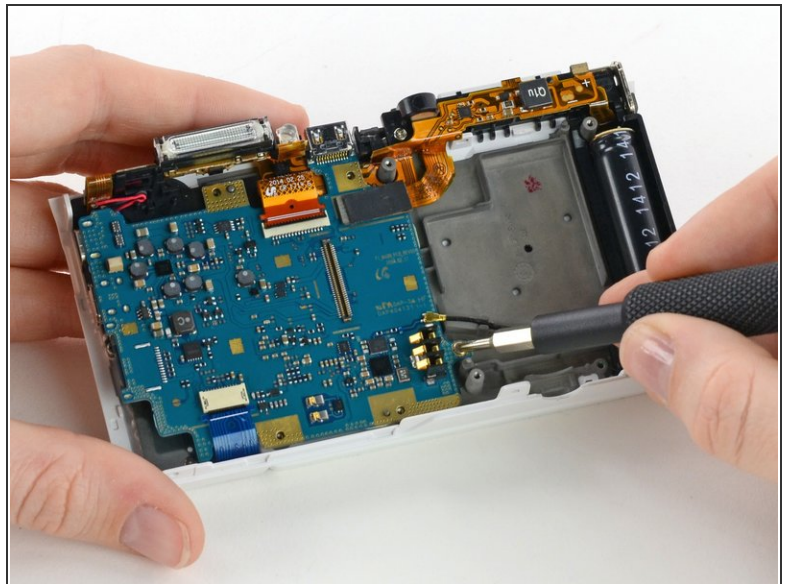
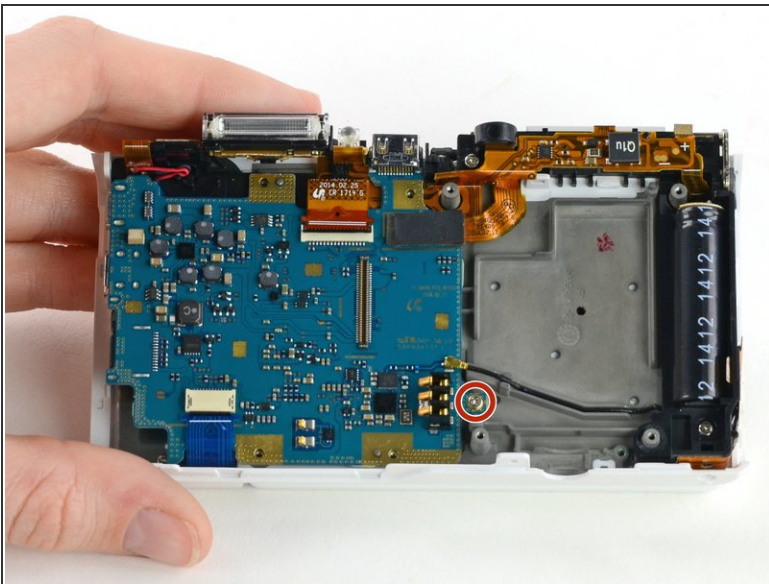
- Use a spudger to disconnect the ribbon cable connecting the image sensor to the motherboard.

## Step 14



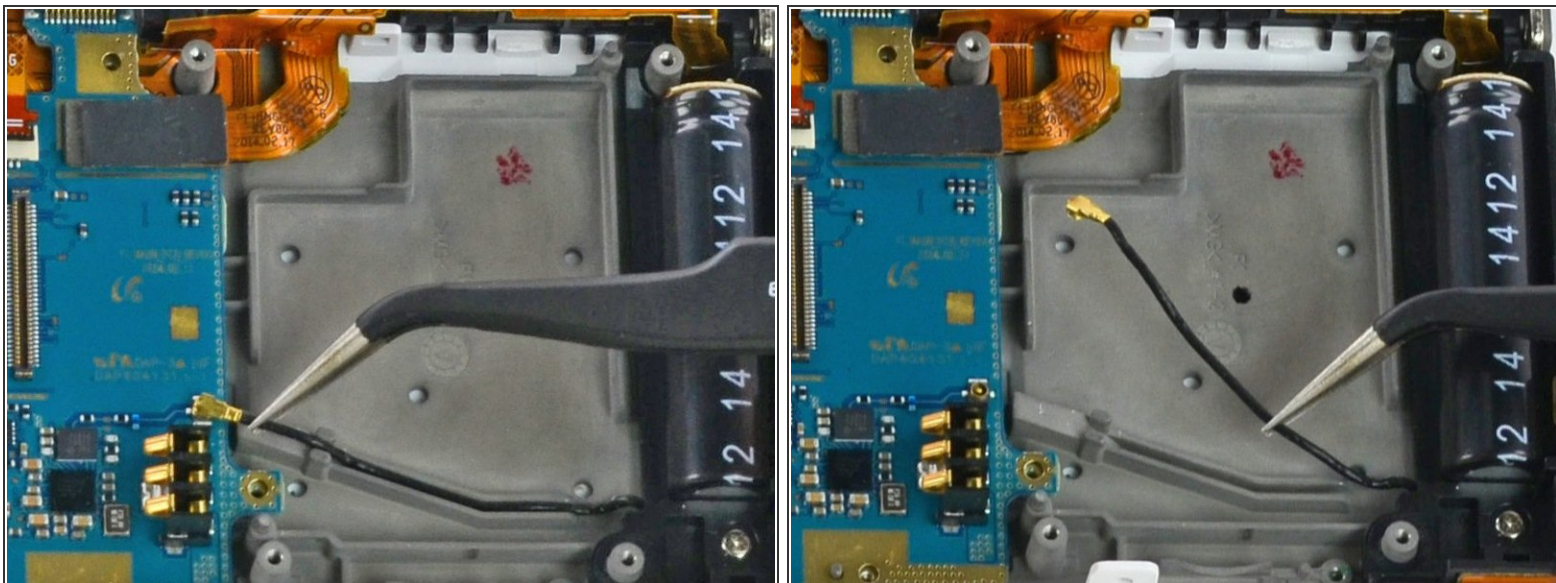
- Gently remove the sensor mount from the camera case.

## Step 15 — Motherboard



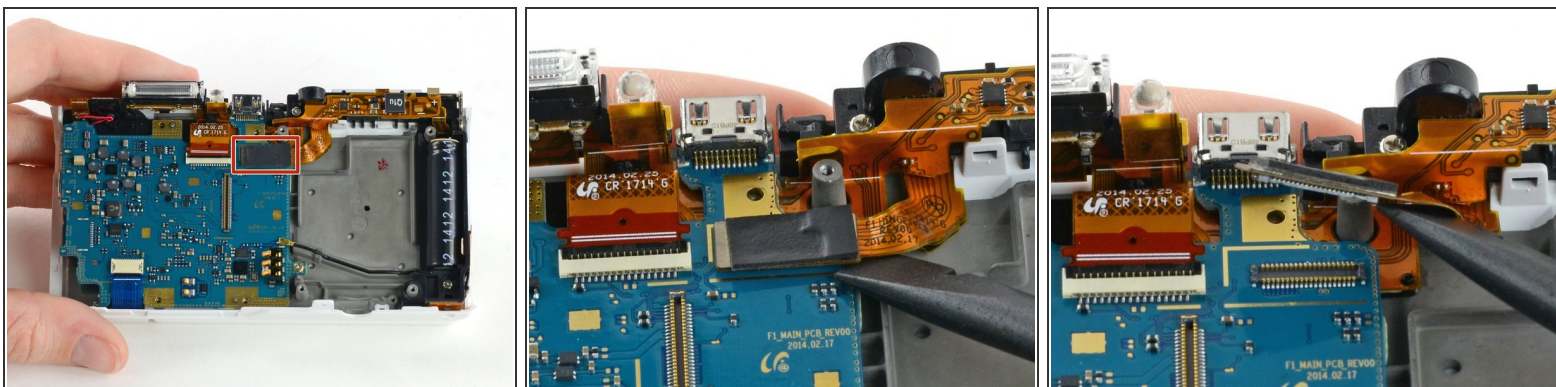
- Use a Phillips #00 screwdriver to remove the 3 mm screw located below the wifi antenna.

## Step 16



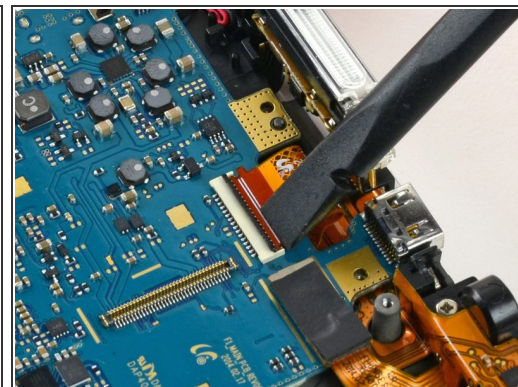
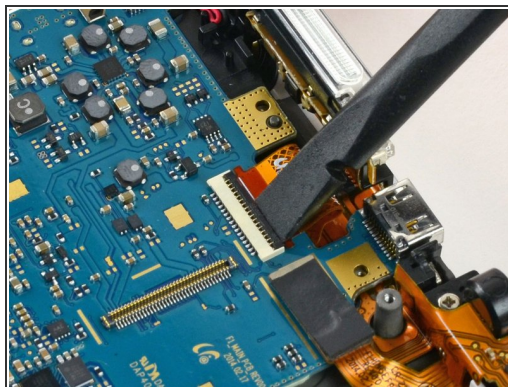
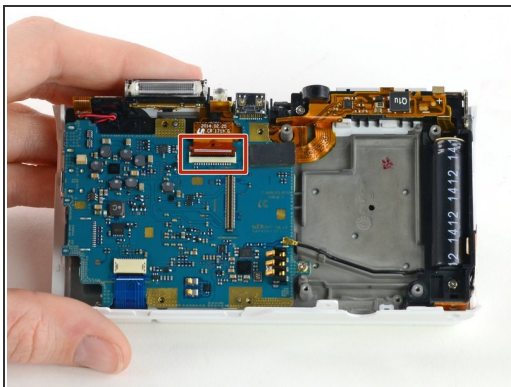
- Use tweezers to disconnect the wifi antenna from the motherboard.

## Step 17



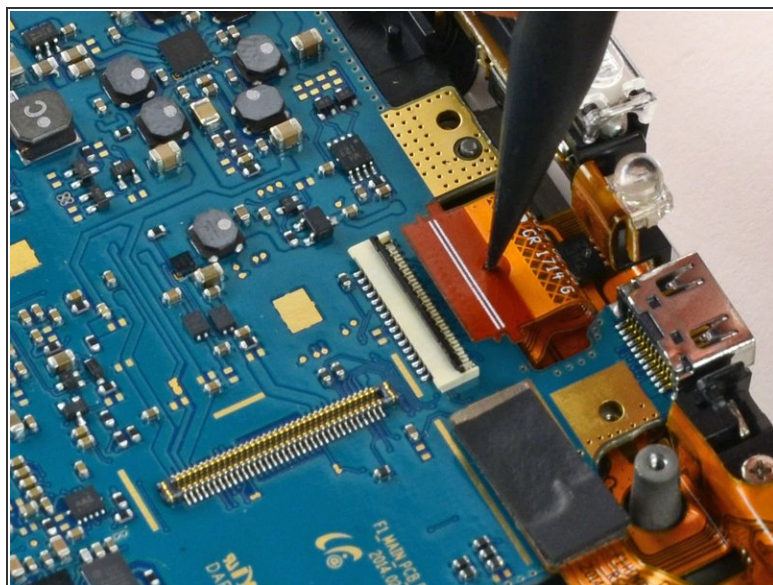
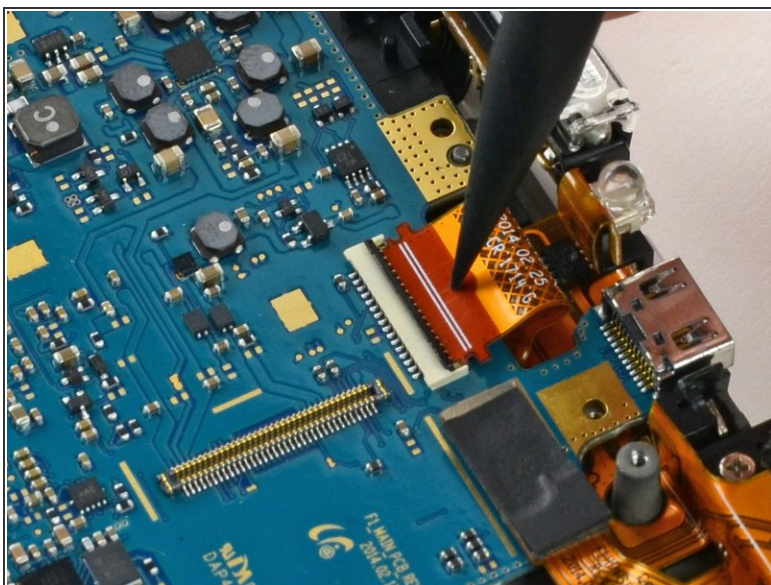
- Use a spudger to disconnect the LCD ribbon cable by prying it straight up from the motherboard.

## Step 18



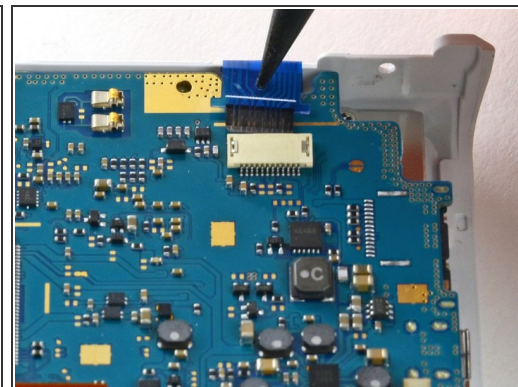
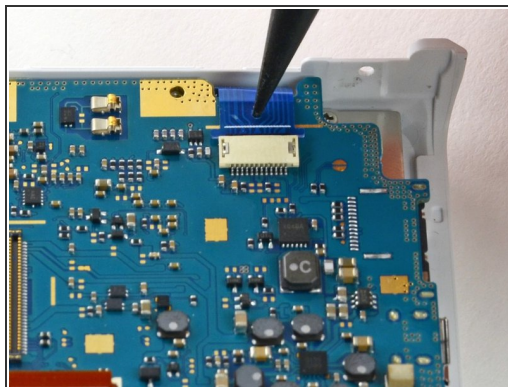
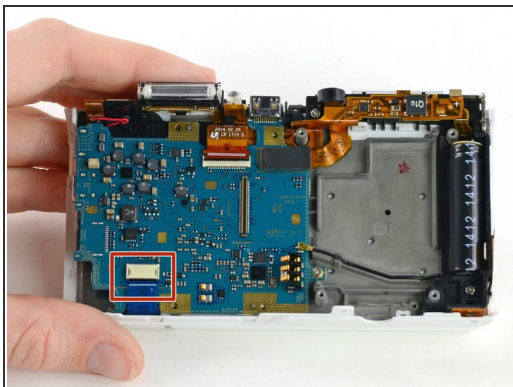
- Use a spudger to unlock the topmost ZIF connector by flipping open the black flap.

## Step 19



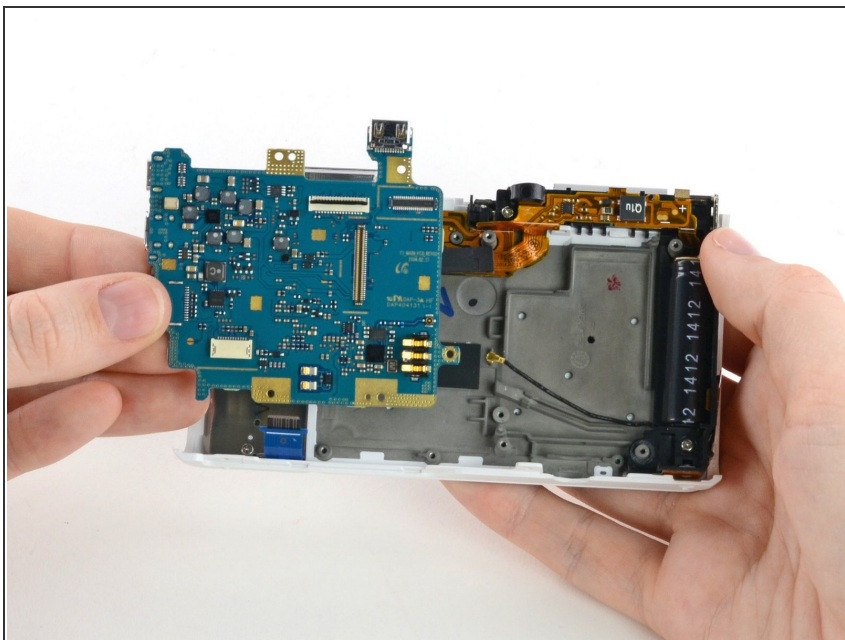
- Insert the pointed end of a spudger into the hole in the middle of the ribbon cable.
- Gently pull the spudger back to slide the ribbon cable out of its connector.

## Step 20



- Disconnect the blue ribbon cable from the motherboard.
- Insert the pointed end of a spudger into the hole in the top of the ribbon.
- Gently pull the ribbon from the connector.

## Step 21



- Remove the motherboard from the camera.

To reassemble your device, follow these instructions in reverse order.