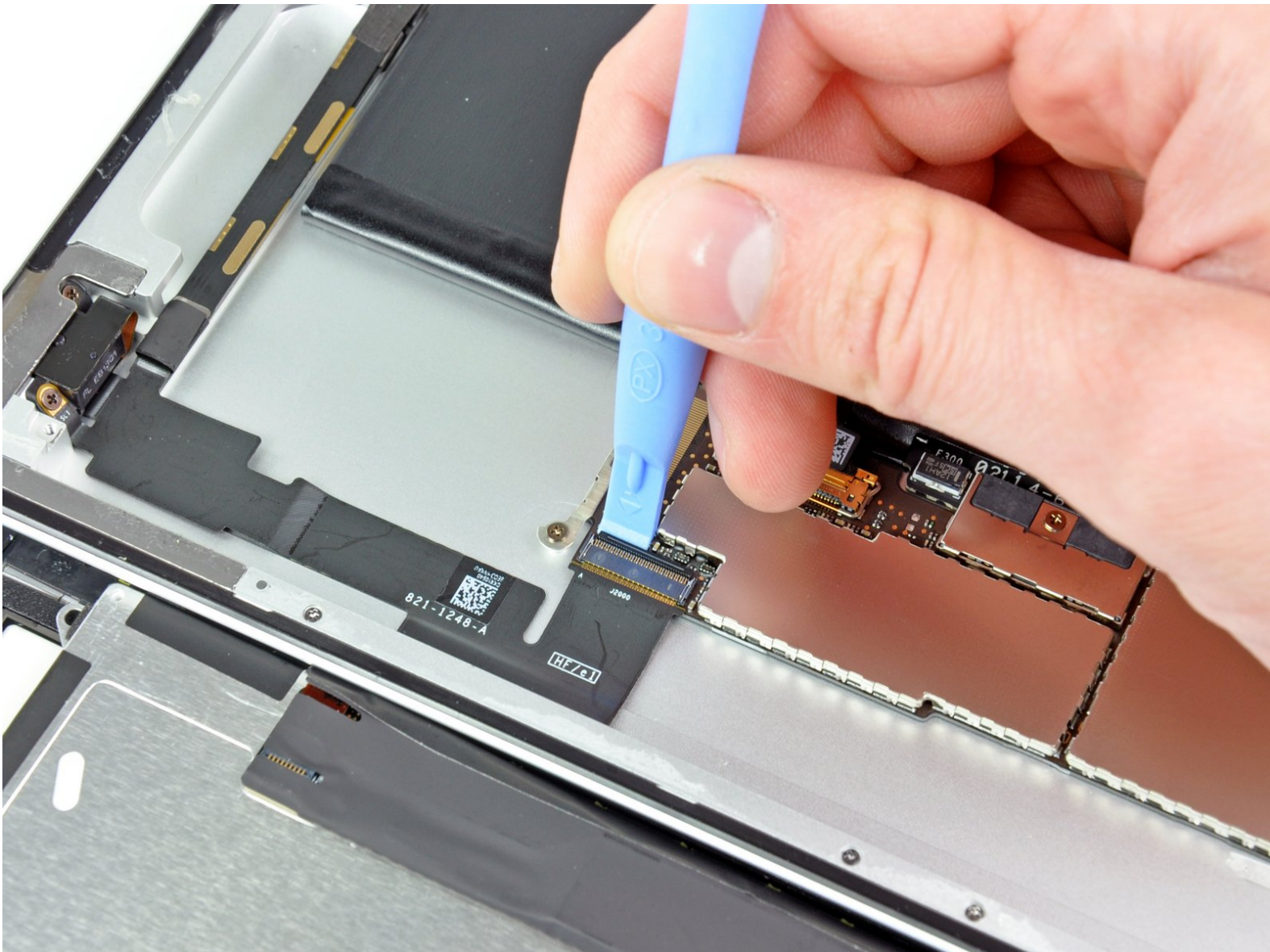




# iPad 2 Wi-Fi EMC 2415 Heaphone Jack & Front Camera Assembly Replacement

Internal Prereq.

Written By: Andrew Bookholt



---

# INTRODUCTION

Internal Prereq.



## TOOLS:

- [Phillips #00 Screwdriver](#) (1)
  - [iFixit Opening Tools](#) (1)
-

## Step 1 — Heaphone Jack & Front Camera Assembly

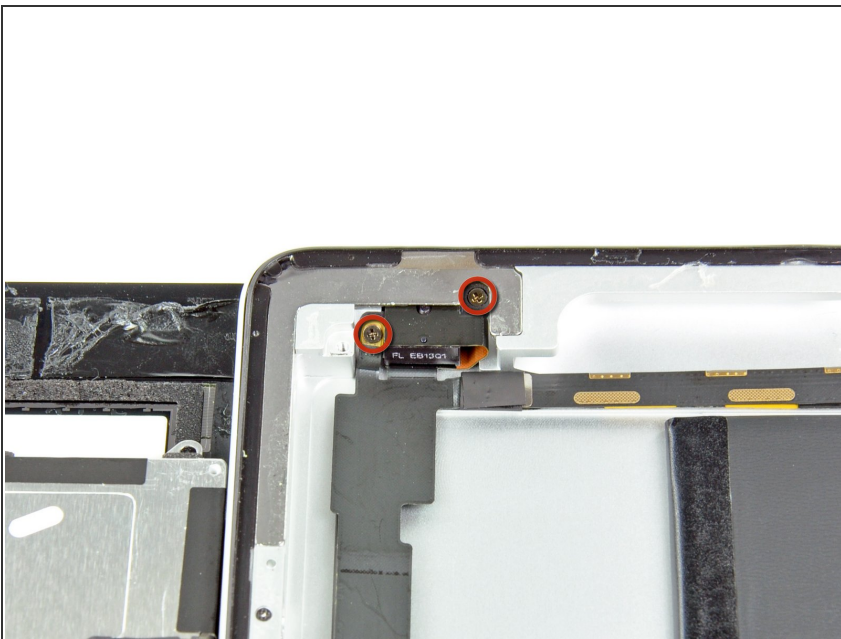


- Use the flat end of a plastic opening tool to flip up the retaining flap on the headphone jack and front-facing camera ribbon cable ZIF socket.

⚠ Be sure you are prying up on the hinged retaining flap, **not** the socket itself.

- Run a plastic opening tool underneath the headphone jack and front-facing camera cable to free it from the adhesive attaching the cable to the rear panel.
- Pull the headphone jack and front-facing camera ribbon cable straight out of its socket on the logic board.

## Step 2



- Remove the two 2.9 mm Phillips screws securing the headphone jack to the rear panel.



### Step 3



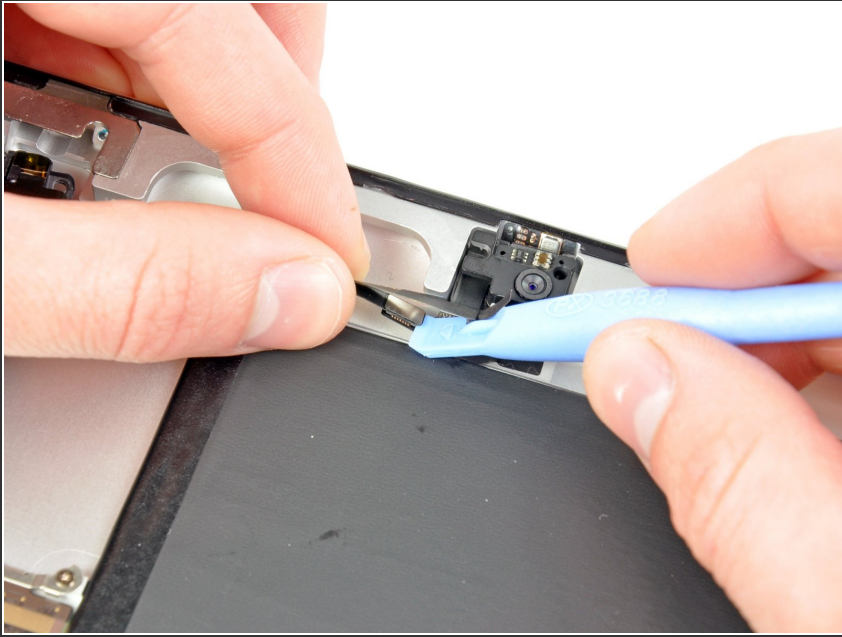
- Use the edge of a plastic opening tool to peel the tape and the adhesive securing the headphone jack & front camera cables to the rear panel.

### Step 4



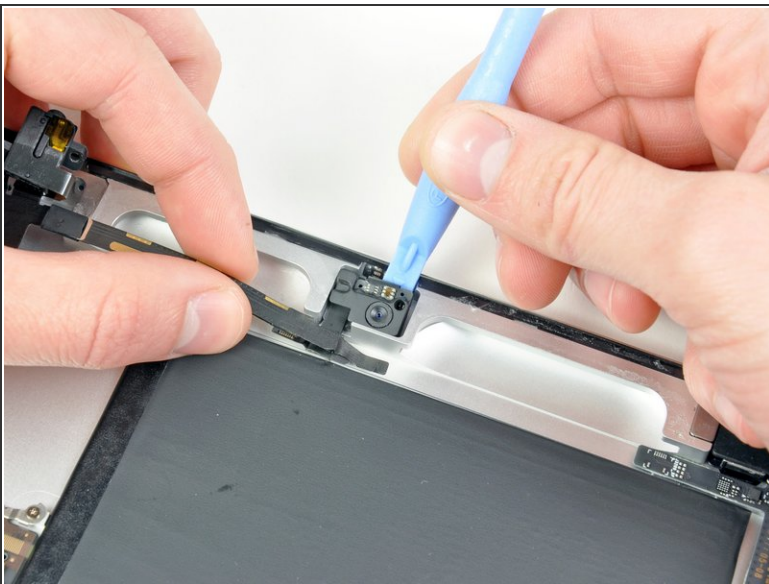
- Pull the headphone jack away from the top edge of the iPad.
- ⚠ Don't try to remove the assembly just yet. The front camera is still stuck to the rear panel.

## Step 5



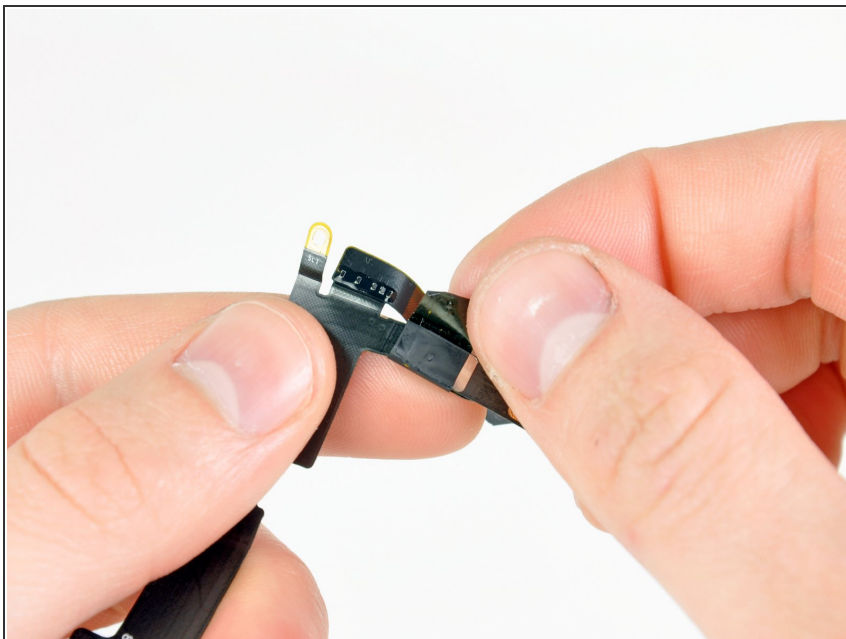
- Lift the headphone jack & front camera cables slightly to access the microphone connector.
- Use the edge of a plastic opening tool to separate the microphone connector from its socket on the headphone jack & front camera cables.

## Step 6



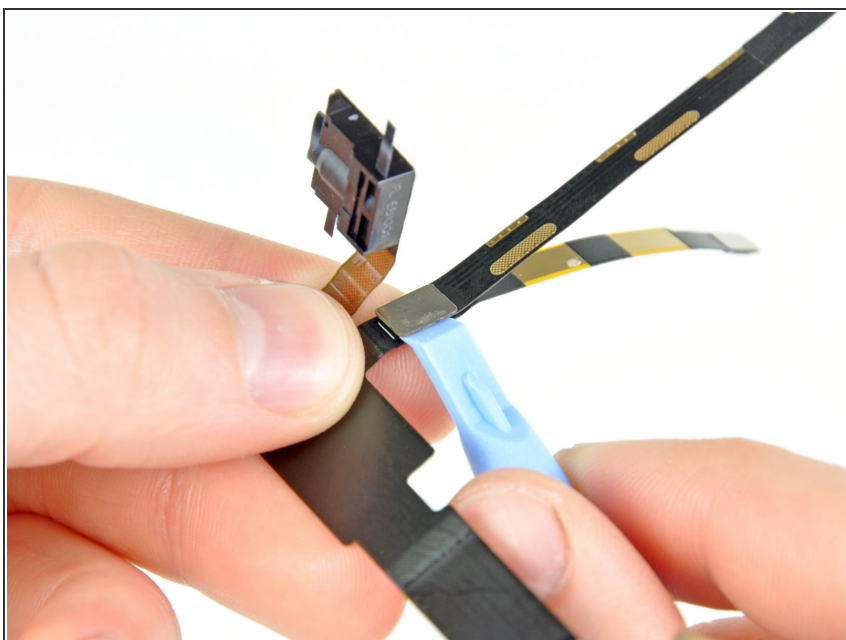
- Peel the front camera off the foam adhesive securing it to the rear panel.
- Remove the headphone jack & front camera assembly from the iPad.

## Step 7



- Carefully remove the strip of tape covering the front camera cable connector.

## Step 8



- Use the edge of a plastic opening tool to disconnect the front camera cable from the headphone jack cable.

To reassemble your device, follow these instructions in reverse order.