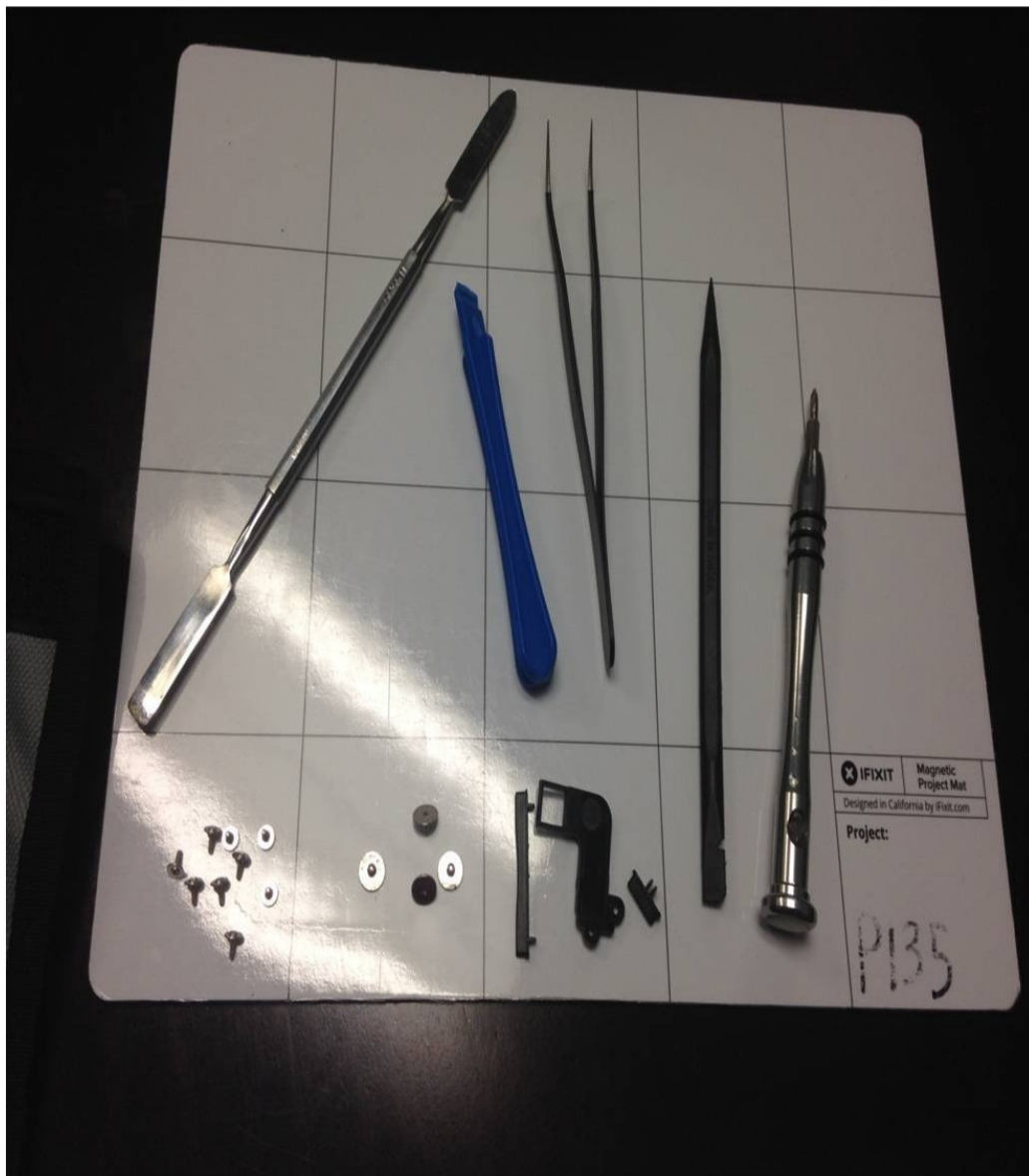




# Proscan Tablet Touch Screen Replacement

This guide demonstrates how to replace a cracked or otherwise dysfunctional screen

Written By: Cameron Denny





## TOOLS:

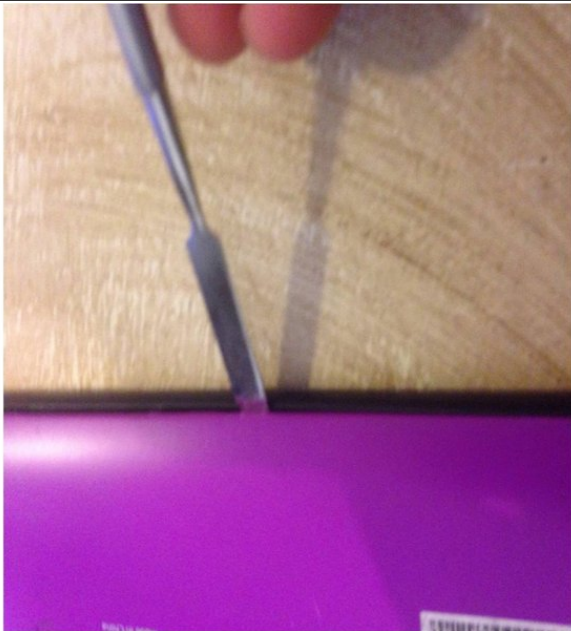
- [Metal Spudger](#) (1)
- [iFixit Opening Tools](#) (1)
- [Precision Tweezers Set](#) (1)
- [Spudger](#) (1)
- [64 Bit Driver Kit](#) (1)

## Step 1 — Touch Screen



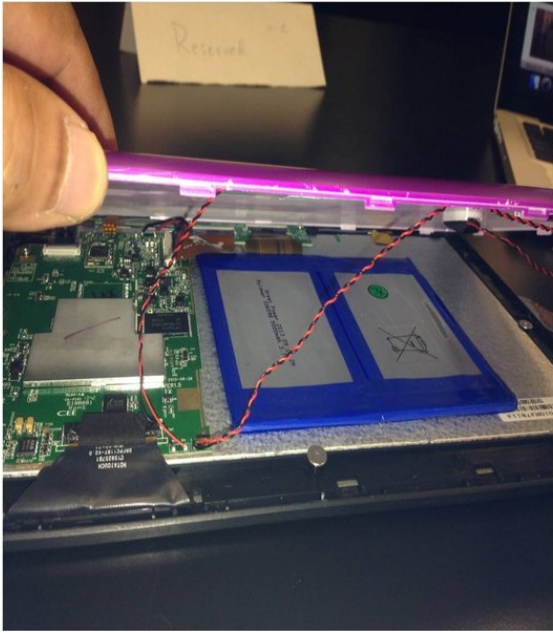
- Tools necessary for task.
- Starting from the left to right
- Metal Spudger
- Plastic opening tool
- Precision tweezers
- Point pen tool
- Driver with bit size J0

## Step 2



- The backing of the tablet is fastened by simply snapping it in. Using the metal opening tool, pry between the plastic backing and the edge, but do not remove it yet. Work your way around until you have them separated.

### Step 3



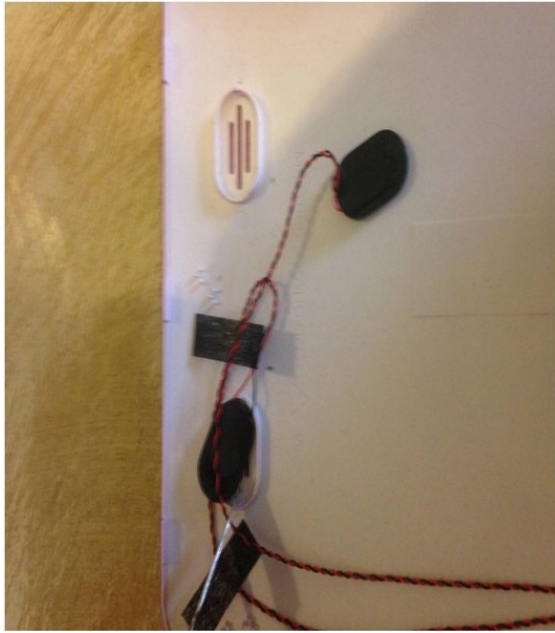
- Once you have finished going around the edges of the tablet, look inside.

### Step 4



- You will notice two wires still connecting the backing to the computer. These are for the speakers.

## Step 5



- You can remove the speakers with your hands to free the backing completely.

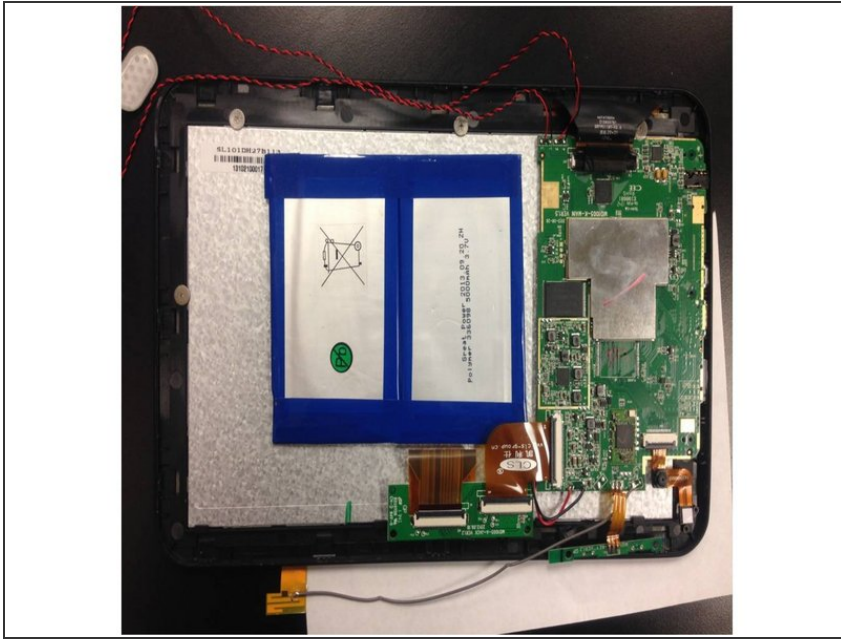
## Step 6



- Next the following highlighted spots are screws. These screws must be loosened to separate the motherboard and digitizer from the outer glass components. Remember lefty loosely, righty tightly. All screws were placed on a magnet board to ensure they did not roll away



## Step 7



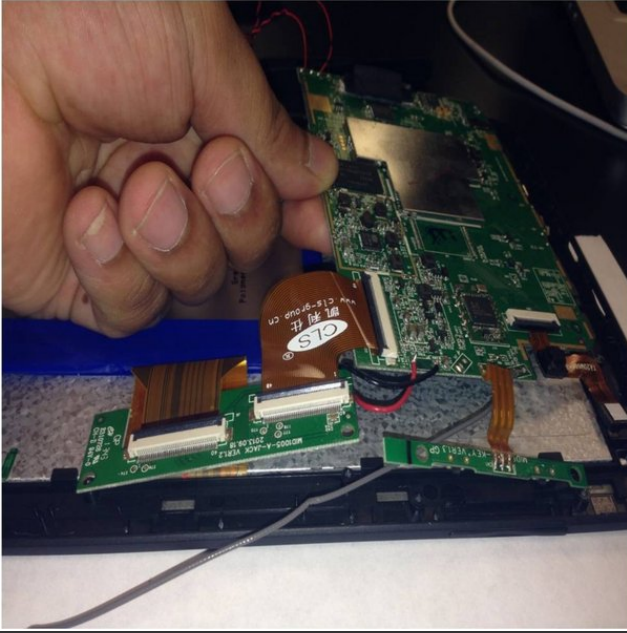
- There is some tape wire that links the screen to the grey digitizer. This can be gently pulled apart by the tweezers

## Step 8



- Next focus on the camera and volume components along the edges highlighted here. The screws have already been taken out, gently pull them off.

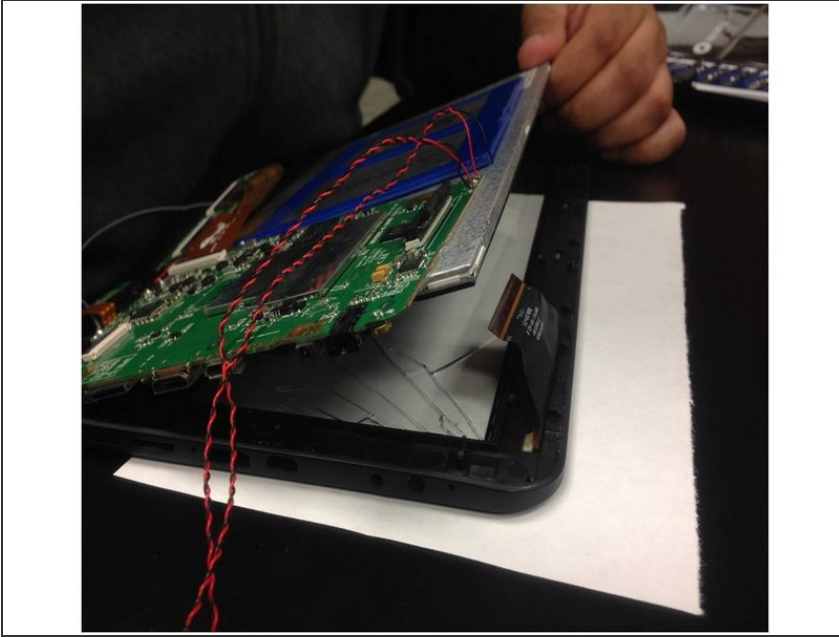
## Step 9



- Gently lift the green motherboard from the grey digitizer to ensure that all screws have been removed. The only connection remaining should be a tape wire to the battery.



## Step 10



- The last step is to remove the grey digitizer from the screen entirely. Note that the blue battery and green motherboard will still be attached, move them as one part

To reassemble your device, follow these instructions in reverse order.