



Asus Transformer Pad Infinity LCD Display Replacement

This guide will demonstrate how to replace the LCD display of the device.

Written By: Allison Poh



INTRODUCTION

Replacing the LCD display involves opening up the device. Prerequisites; follow the [Asus Transformer Pad Infinity Teardown](#) link up to step 6 to remove the LCD display.



TOOLS:

- [Phillips #000 Screwdriver](#) (1)
- [Tweezers - Pro/ESD/Angled](#) (1)
- [Spudger Plastic opening tool screwdriver](#) (1)
- [Anti-Static Wrist Strap](#) (1)

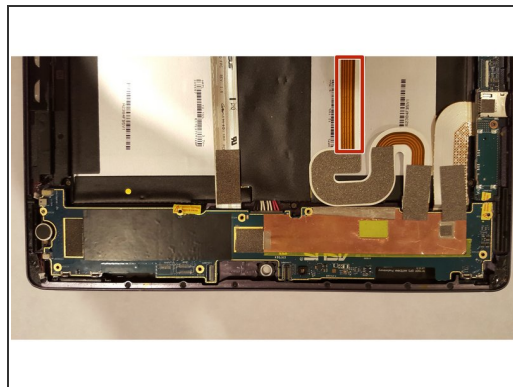
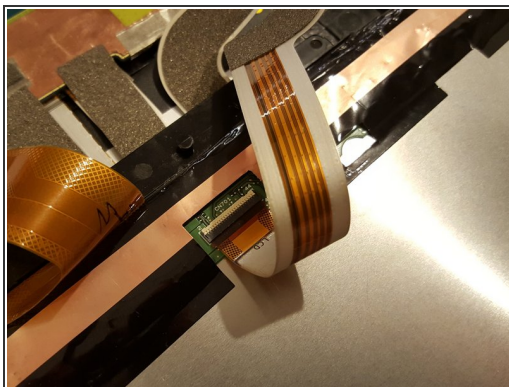
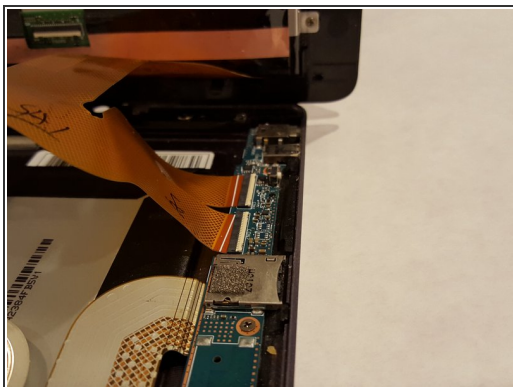
optional



PARTS:

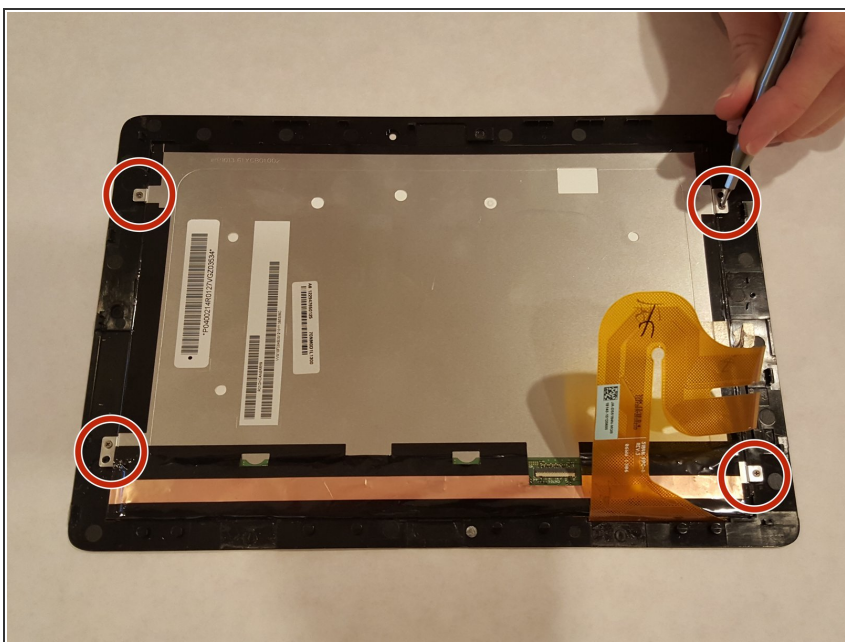
- [ASUS Transformer Pad Infinity LCD](#) (1)
- [ASUS Transformer Pad Infinity LCD Flex Cable](#) (1)

Step 1 — LCD Display



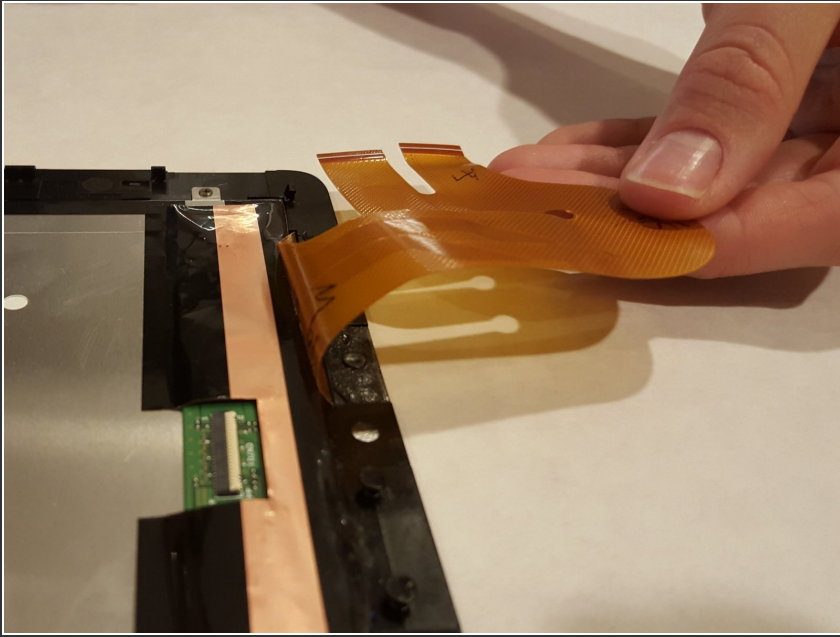
- Disconnect the long silver ribbon connector from the screen.
- Remove the orange ribbon connector with the two connections.

Step 2



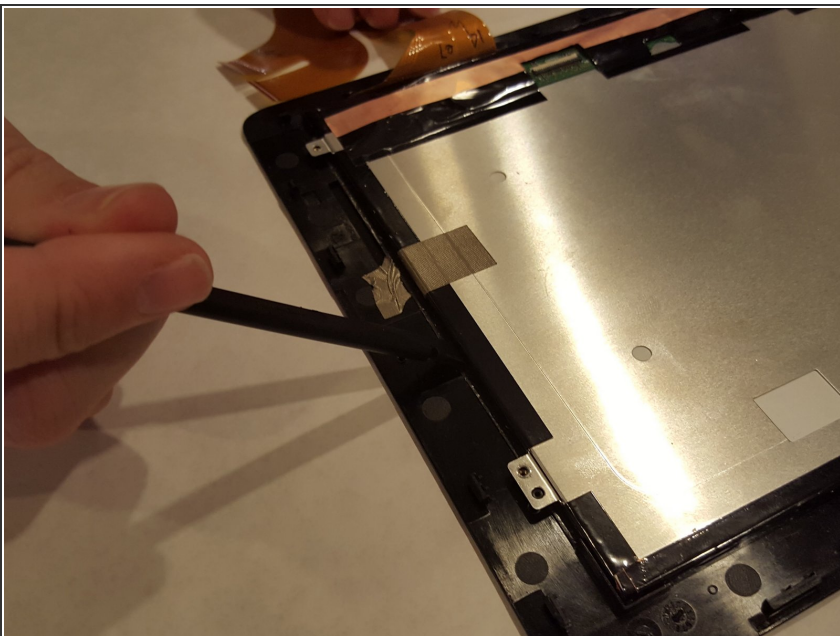
- Remove the 4 screws around the metal portion of the screen (this is the LCD display).

Step 3



- Peel the orange ribbon back (it has adhesive sticking itself to the black electric tape looking stuff surrounding the metal portion).

Step 4



- Carefully place a preferably plastic tool between the glass portion and the electric tape looking stuff and pry off the screen from that portion.
- Note: Take care as you're dealing directly with the glass and the way your touch input gets into the device.

Step 5



- Once removed, replace the LCD display back onto the glass screen (the new screen may or may not have new adhesive depending on where you got it).
- If it doesn't, make sure you secure it with the screws safely).

To reassemble your device, follow these instructions in reverse order.