



Dell Inspiron 8600 Display Removal

Follow this guide to remove the display module...

Written By: Victor



INTRODUCTION

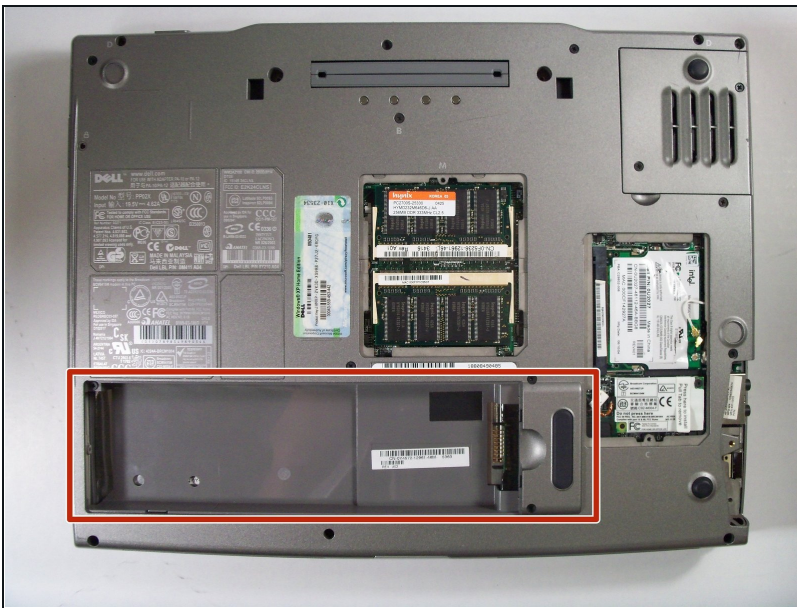
Follow this guide to remove the display module of your Dell Inspiron 8600.

TOOLS:


Flathead 3/32" or 2.5 mm Screwdriver (1)

Phillips #1 Screwdriver (1)

Step 1 — Battery



- Remove the battery from the bottom left of the laptop as shown.

 **Remove the battery before operating on the computer to avoid electrocution.**

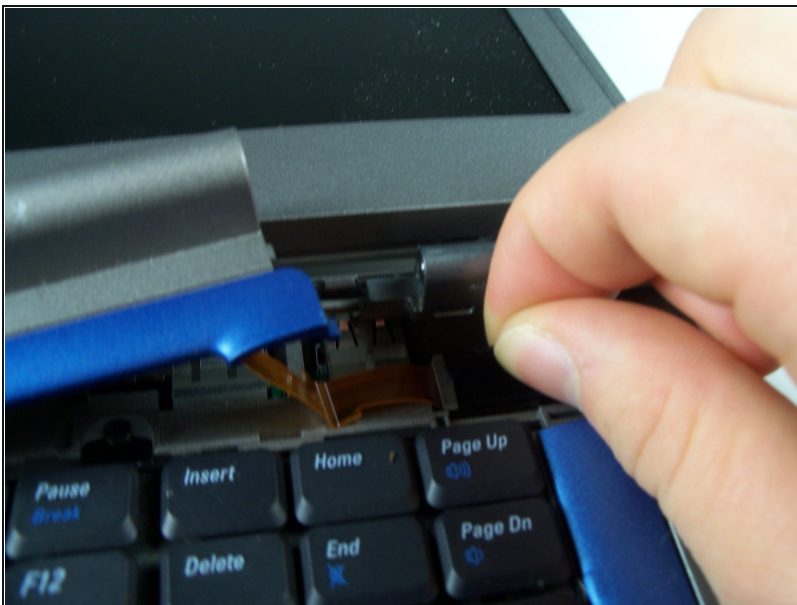
Step 2 — Hinge Cover



- Insert a spudger into the notch at the far left side of the top blue panel and pry the hinge cover off.
- You may need to pry the other side off as well. You can do this by inserting the spudger between the hinge and the top cover.

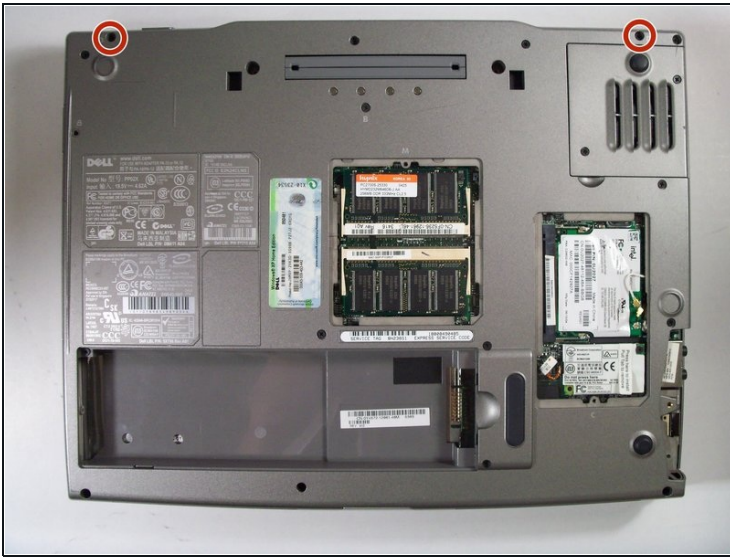
⚠ Be careful of the wire attached to the underside of the hinge cover.

Step 3



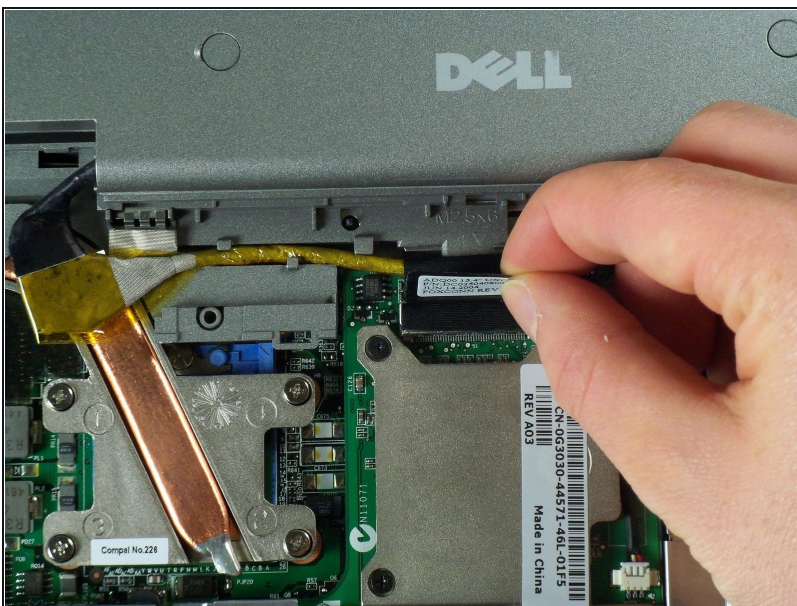
- Pull the small black tab on the right hand side of the laptop.
- You have now removed the hinge cover.

Step 4 — Display Module



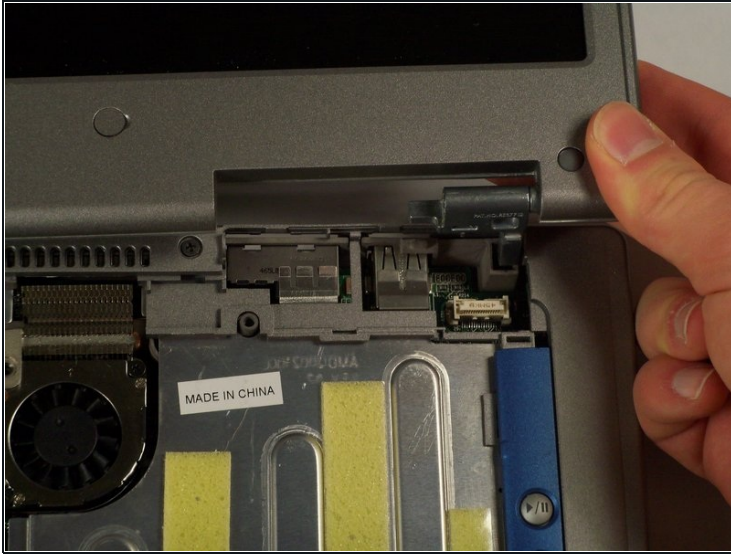
- Flip the laptop over and remove the indicated screws.
- Flip the laptop back over.
- Find the two places where the display module is attached to the base of the computer.

Step 5



- Disconnect the video card from the display module by gently lifting upwards on the black tab.

Step 6



- Lift the display module directly upwards from the base of the computer.

Step 7



- Now remove the display module.

To reassemble your device, follow these instructions in reverse order.