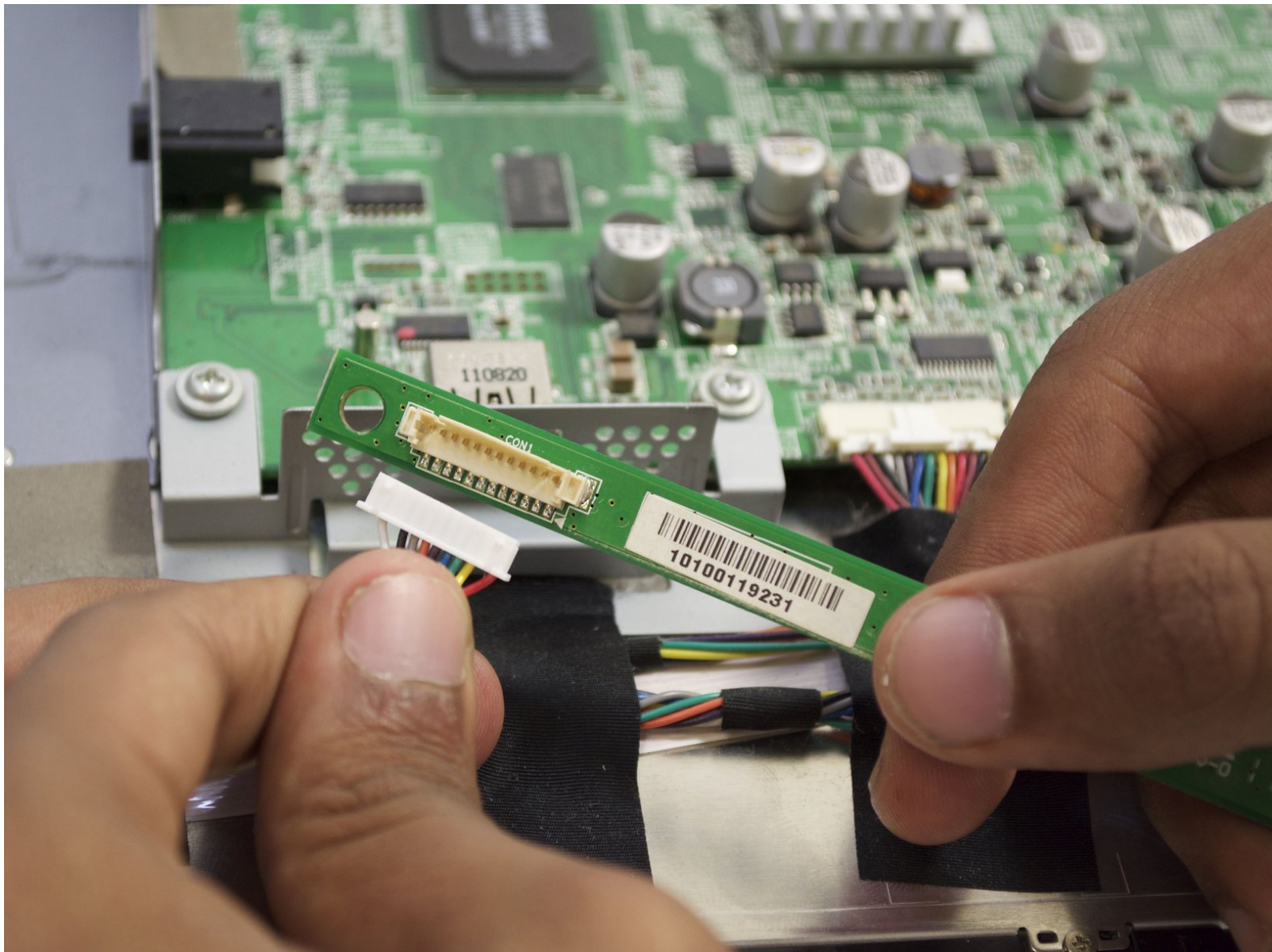




# Sony PlayStation 3D Display 3D Sync Transmitter Replacement

This guide will show you how to replace the 3D Sync Transmitter located inside of the Sony PlayStation 3D Display.

Written By: Tia McNaughton



# INTRODUCTION

This repair might be needed if your 3D glasses will not connect to your Sony PlayStation 3D Display.



## TOOLS:

- [Metal Spudger](#) (1)
- [Phillips #2 Screwdriver](#) (1)
- [iFixit Opening Tools](#) (1)
- [Phillips #1 Screwdriver](#) (1)



## PARTS:

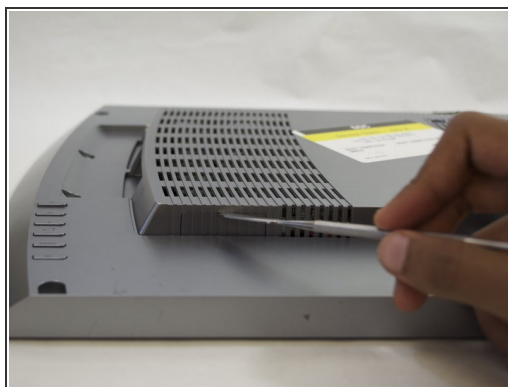
- [PlayStation 3D IR Sensor](#) (1)

## Step 1 — Rear Case



- Remove the base by pushing in the button and sliding out the unit.

## Step 2

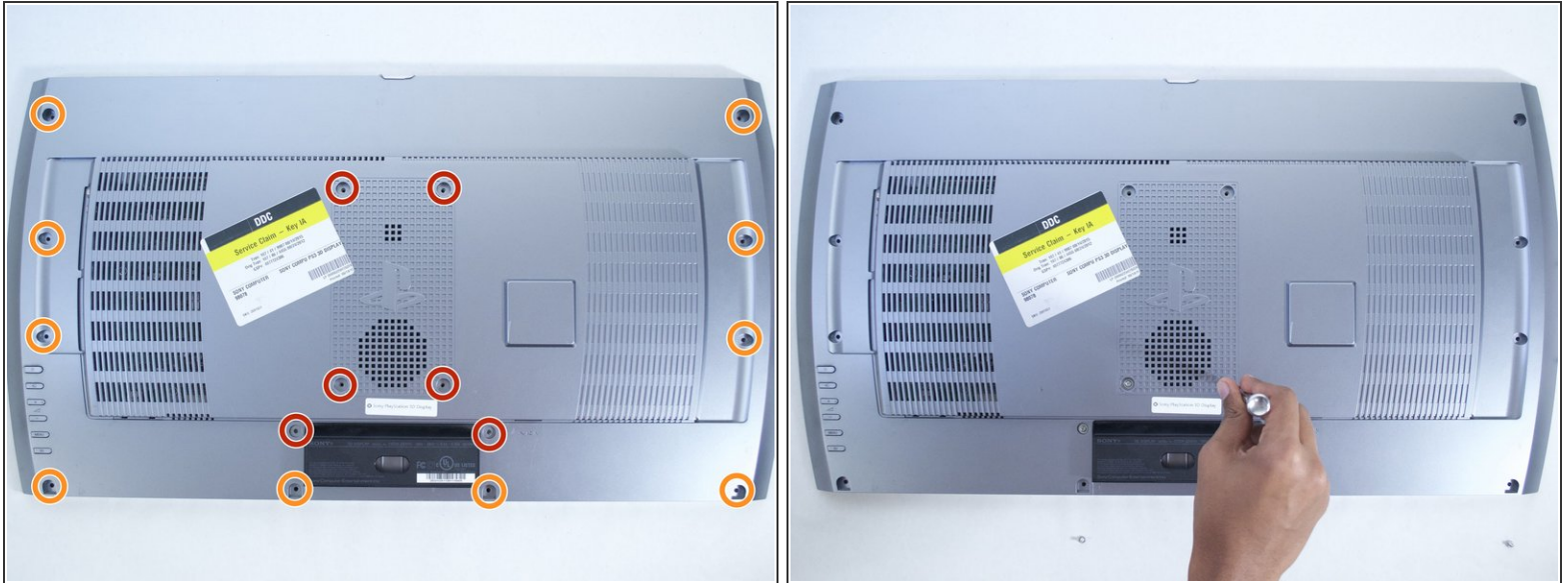


- Remove USB port cover from back plate with a metal spudger.

**i** This will prevent the cover from falling under the back plate once it is removed.

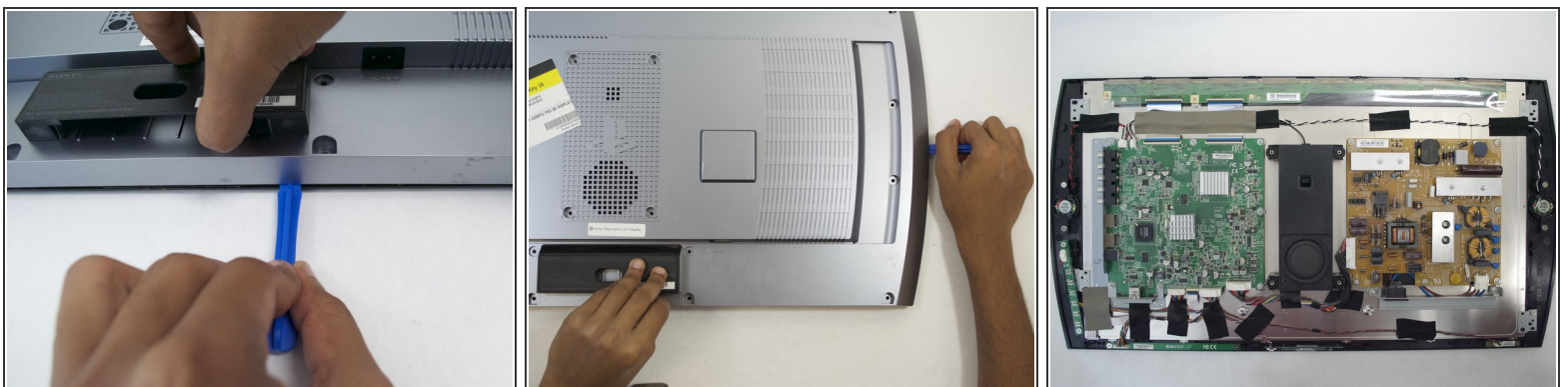


## Step 3



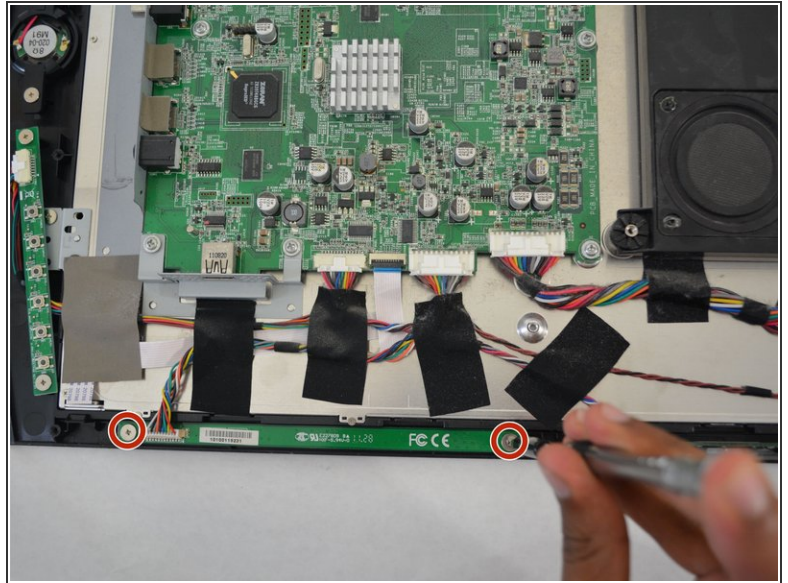
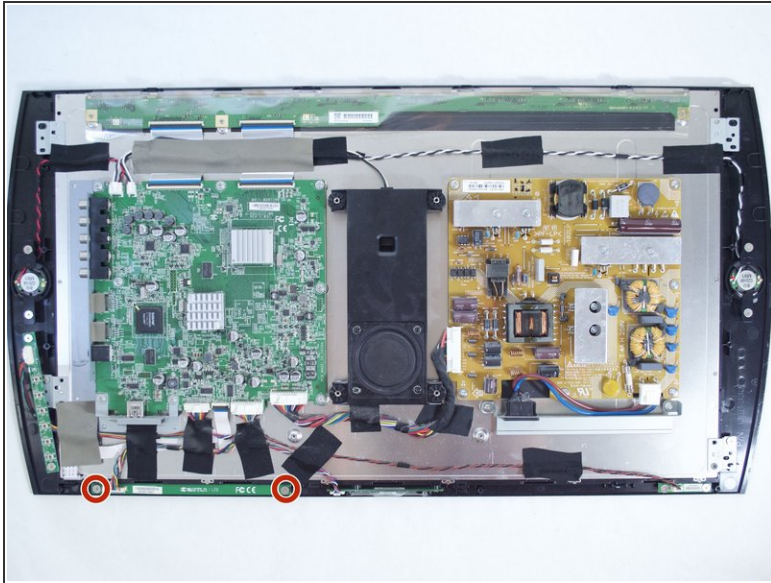
- With the Phillips #02 screwdriver, remove the six 6 mm length x 6 mm head screws from the back plate.
- With the Phillips #02 screwdriver, remove the ten 6 mm length x 8 mm head screws from the back plate.
- ⓘ These screws have different threads and need to be kept separate.

## Step 4



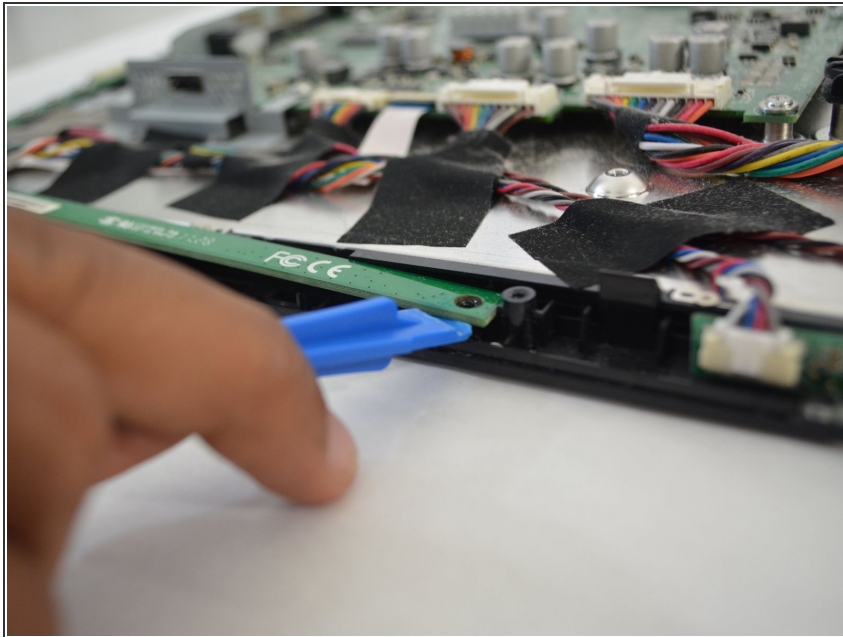
- Remove back plate with a plastic opening tool by slowly prying around the entire plate.
- ⚠ Be gentle to avoid breaking the plastic clips which hold the plate.
- Once separated the plate easily lifts off.

## Step 5 — 3D Sync Transmitter



- With the Phillips #01 screwdriver, remove the two 5 mm length x 7 mm head screws that hold the 3D Sync Transmitter in place.

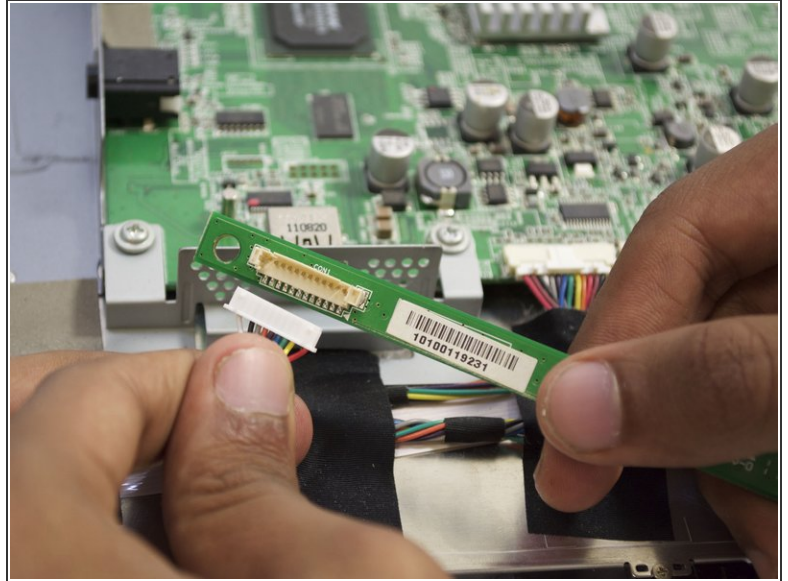
## Step 6



- Carefully pry off the 3D Sync Transmitter with the plastic opening tool.
- ⚠ Use the plastic opening tool to pry at both ends and not from the center as to avoid breaking the 3D Sync Transmitter.



## Step 7



- Pry the tab slightly up with your thumbnail and pull the connector away from the board.

To reassemble your device, follow these instructions in reverse order.