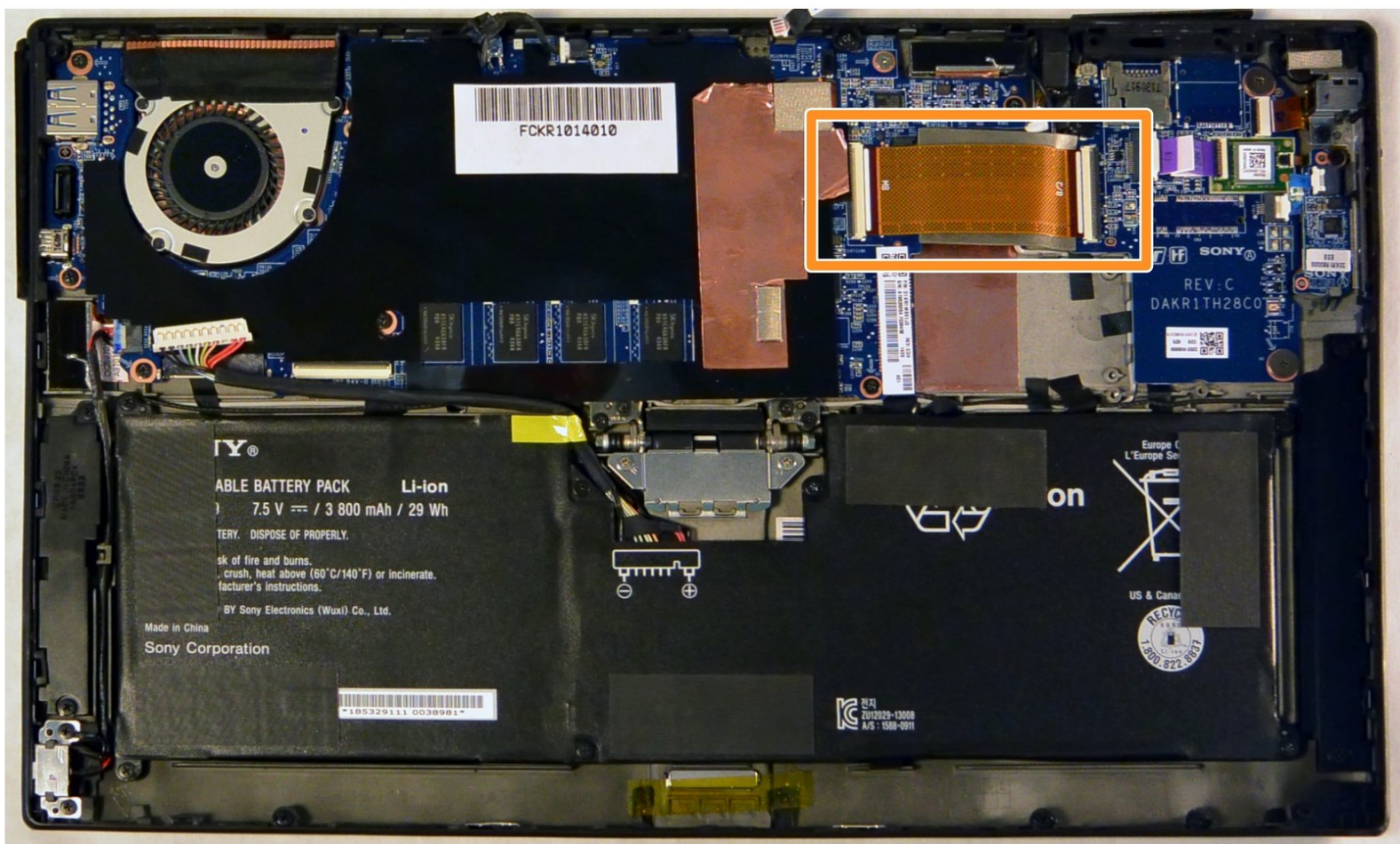




Sony Vaio Tap 11 Wifi Module Replacement

Written By: Alexander Bridges





TOOLS:

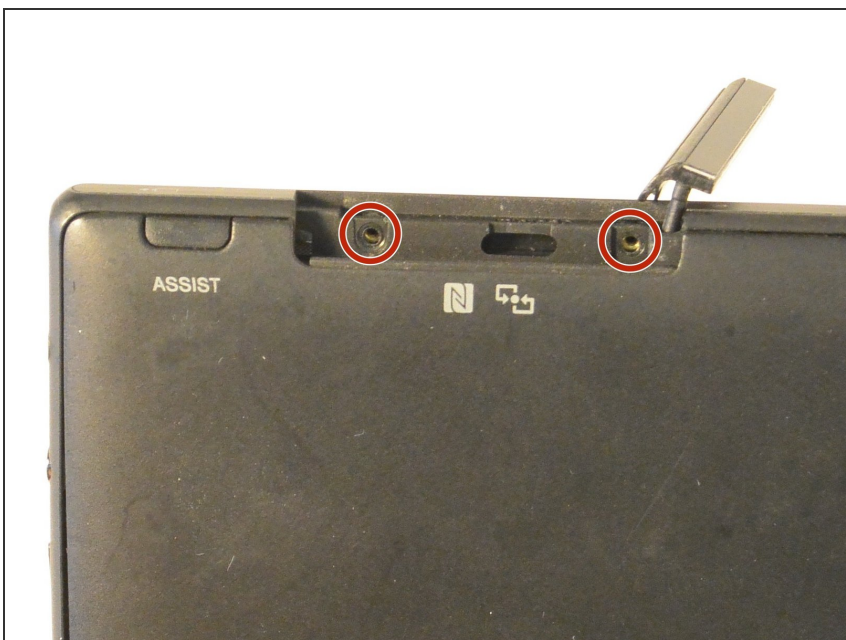
- [Phillips #000 Screwdriver](#) (1)
 - [Suction Handle](#) (1)
-

Step 1 — Screen Assembly



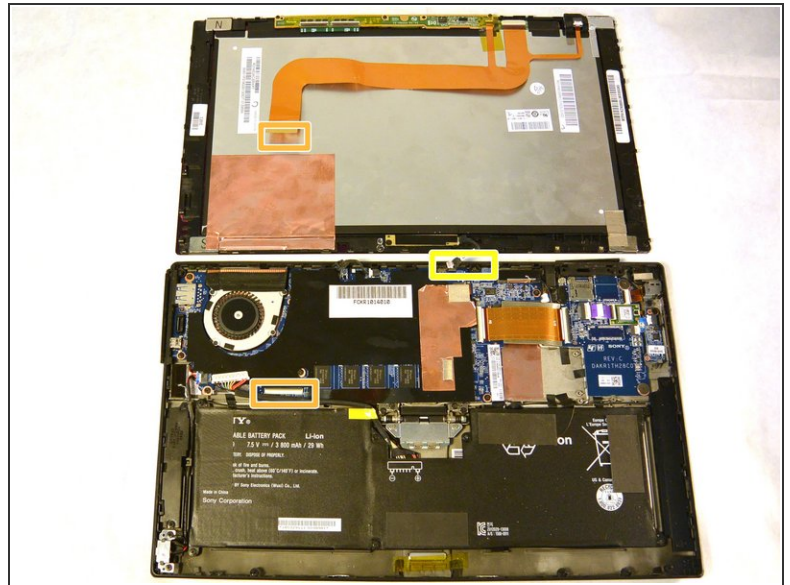
- Begin by opening the HDMI/USB port cover on the left edge.
- Remove the three #000 headed, 3 mm long screws located underneath the port cover.

Step 2



- Locate and open the Micro SD slot on the top side of the device.
- Remove the two screws located beneath the cover.

Step 3

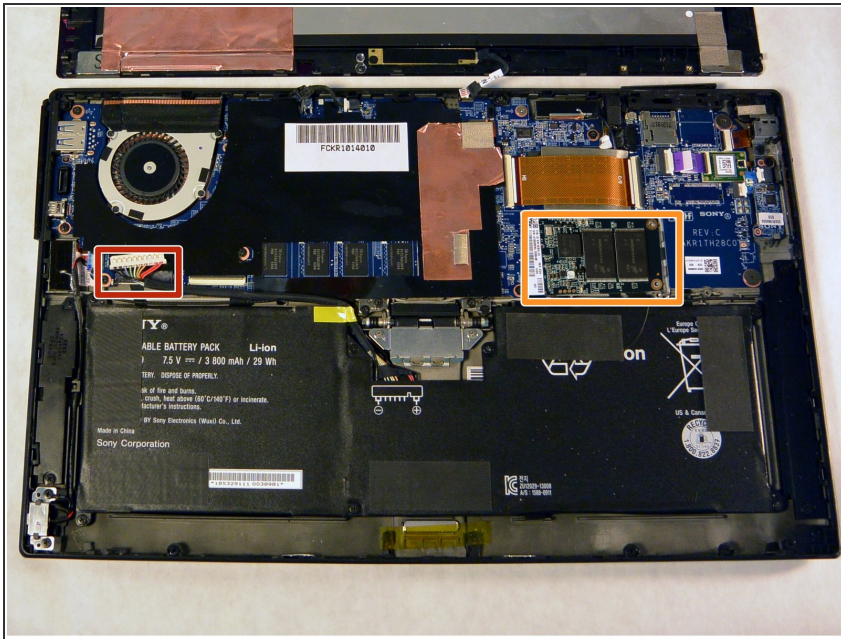


- Attach the suction cup to the top right area of the screen.
- Pull to separate the screen from the rest of the device.

⚠ Be aware of the front camera cable that is still connected to the rest of the device.

- Detach the display ribbon cable.

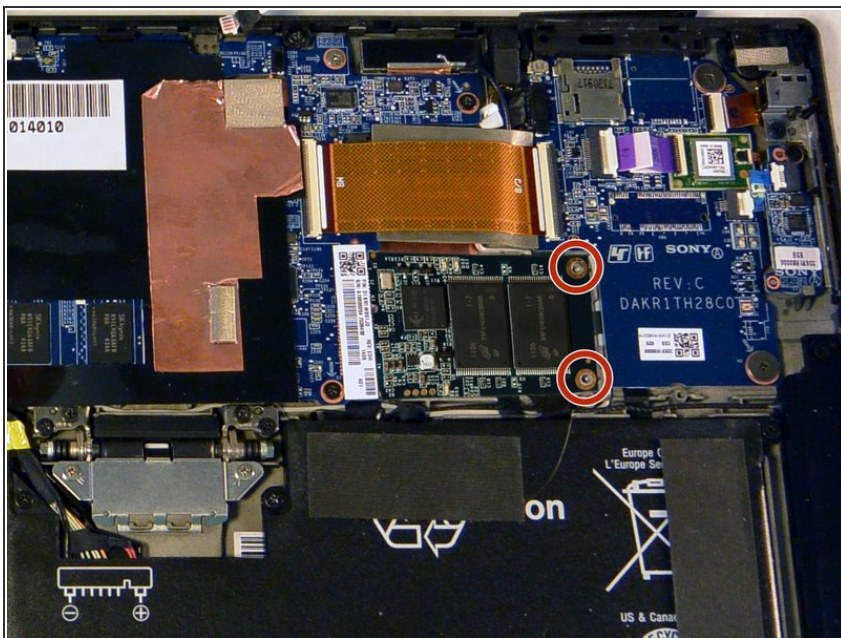
Step 4 — Solid State Disk



⚠️ Unplug the battery connector located beside the fan.

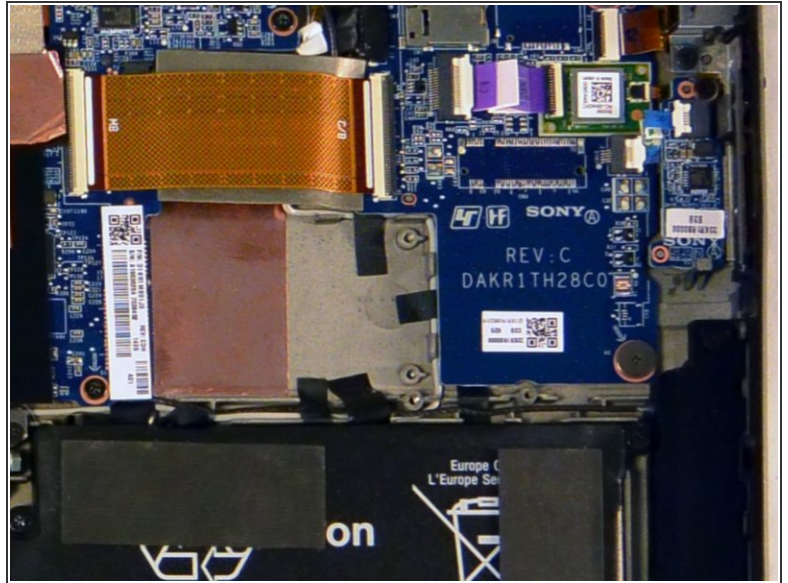
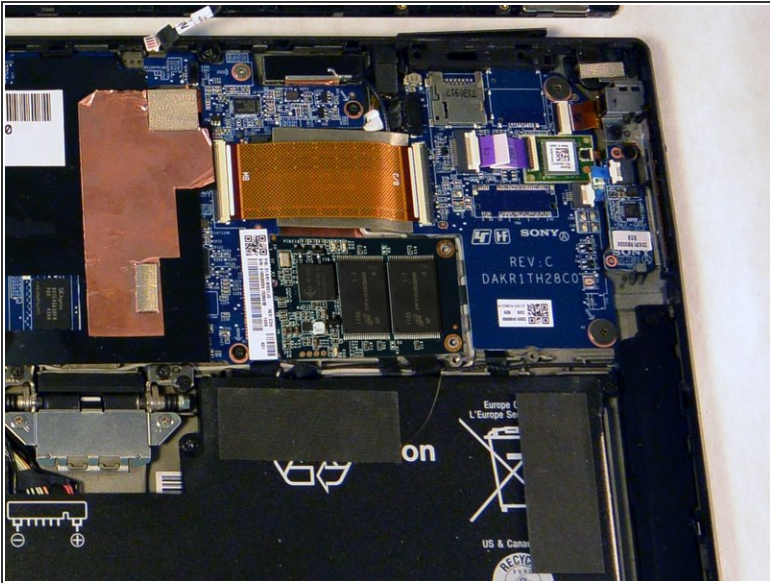
ℹ️ Locate the SSD on the right side of the device, above the battery and beneath the WiFi chip.

Step 5



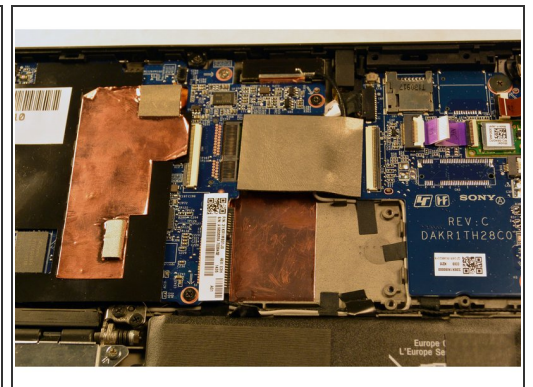
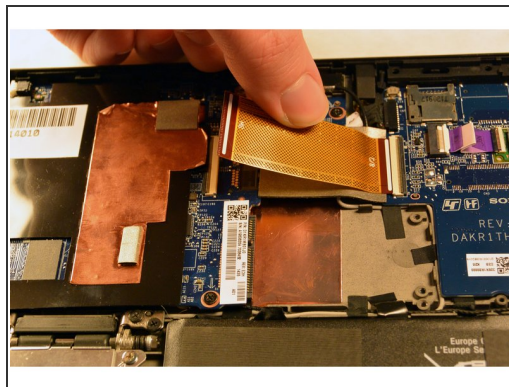
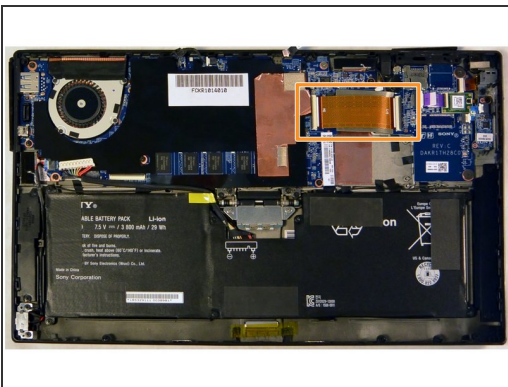
- Remove the two 3 mm Phillips #000 screws from the right edge of the SSD.

Step 6



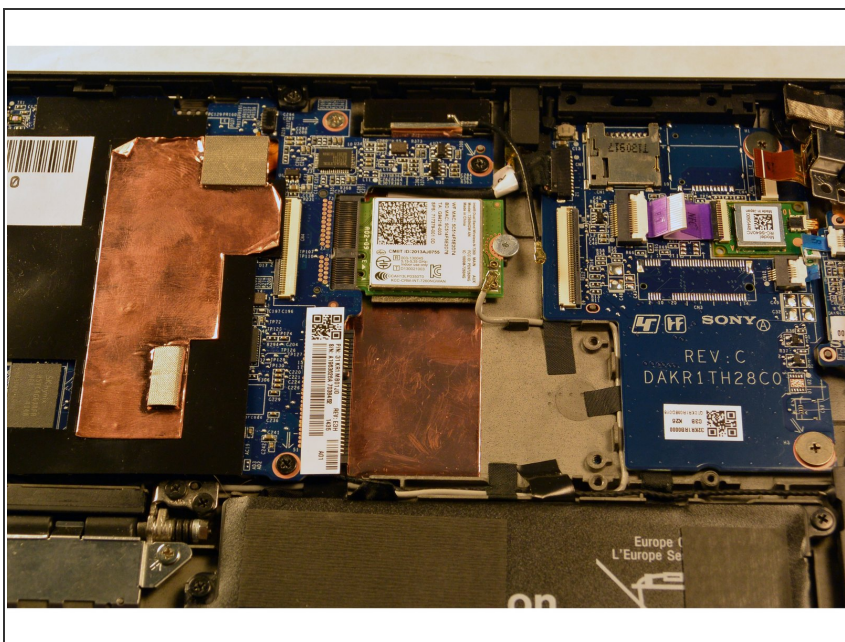
- Pull the SSD towards the right and slightly up, removing it from the back assembly.

Step 7 — Wifi Module



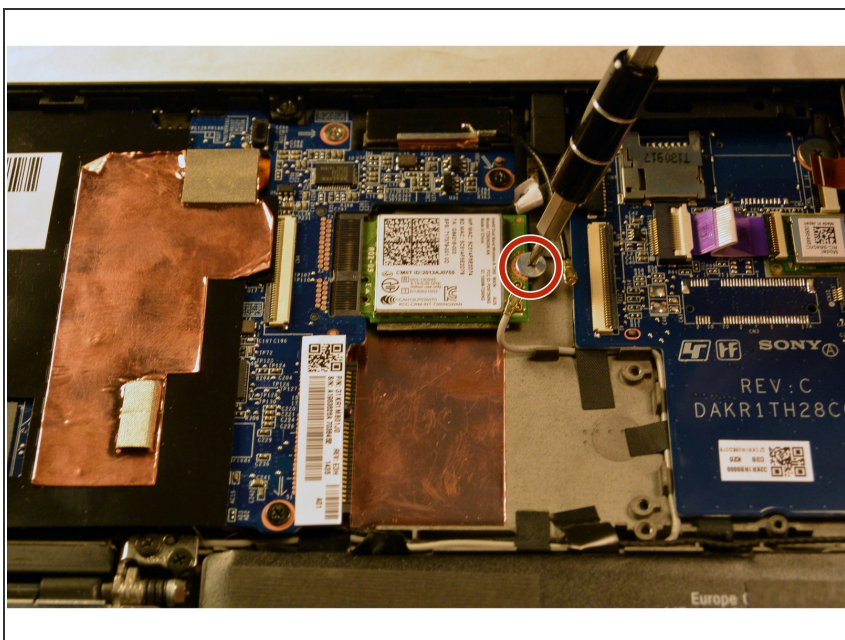
- Begin by removing the orange ribbon cable connecting the motherboard to the daughterboard, located above the SSD.
- Gently tug either side until it releases, then pull out the other end.

Step 8



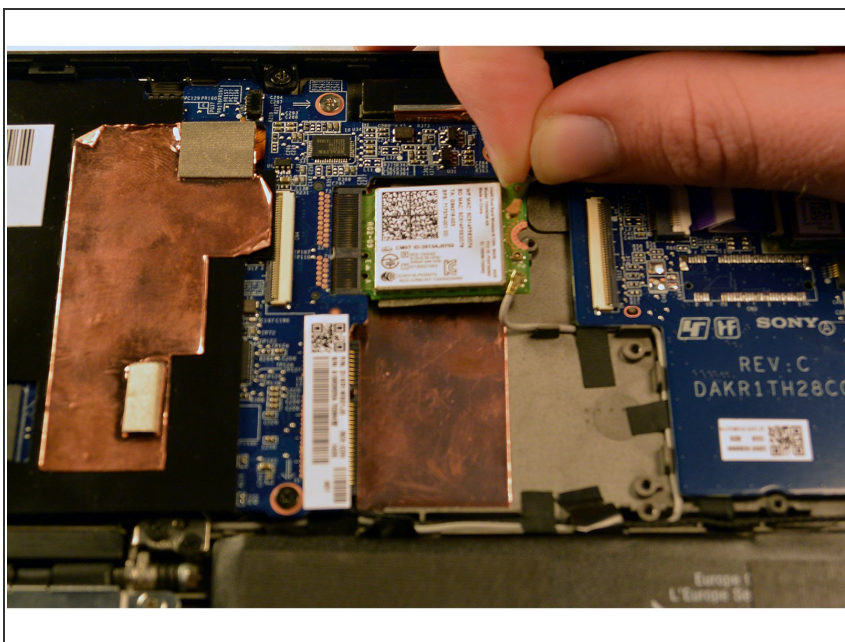
- Remove the grey foam separator that was underneath the orange ribbon cable.

Step 9



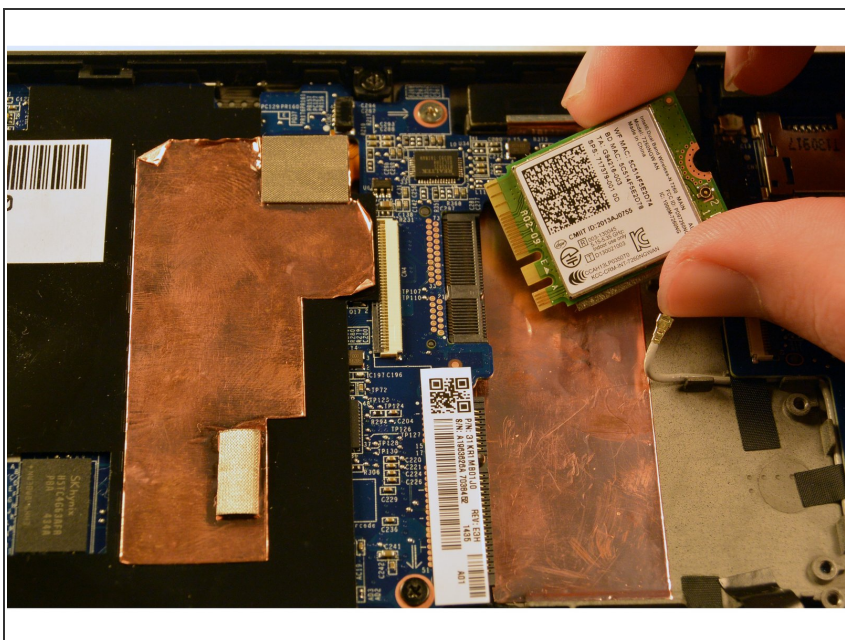
- Remove the silver 3 mm Phillips screw that holds the WiFi module in place.

Step 10



- Remove the black and grey antenna cables from the right side of the device.

Step 11



- Remove module by gently pulling towards the right.

To reassemble your device, follow these instructions in reverse order.