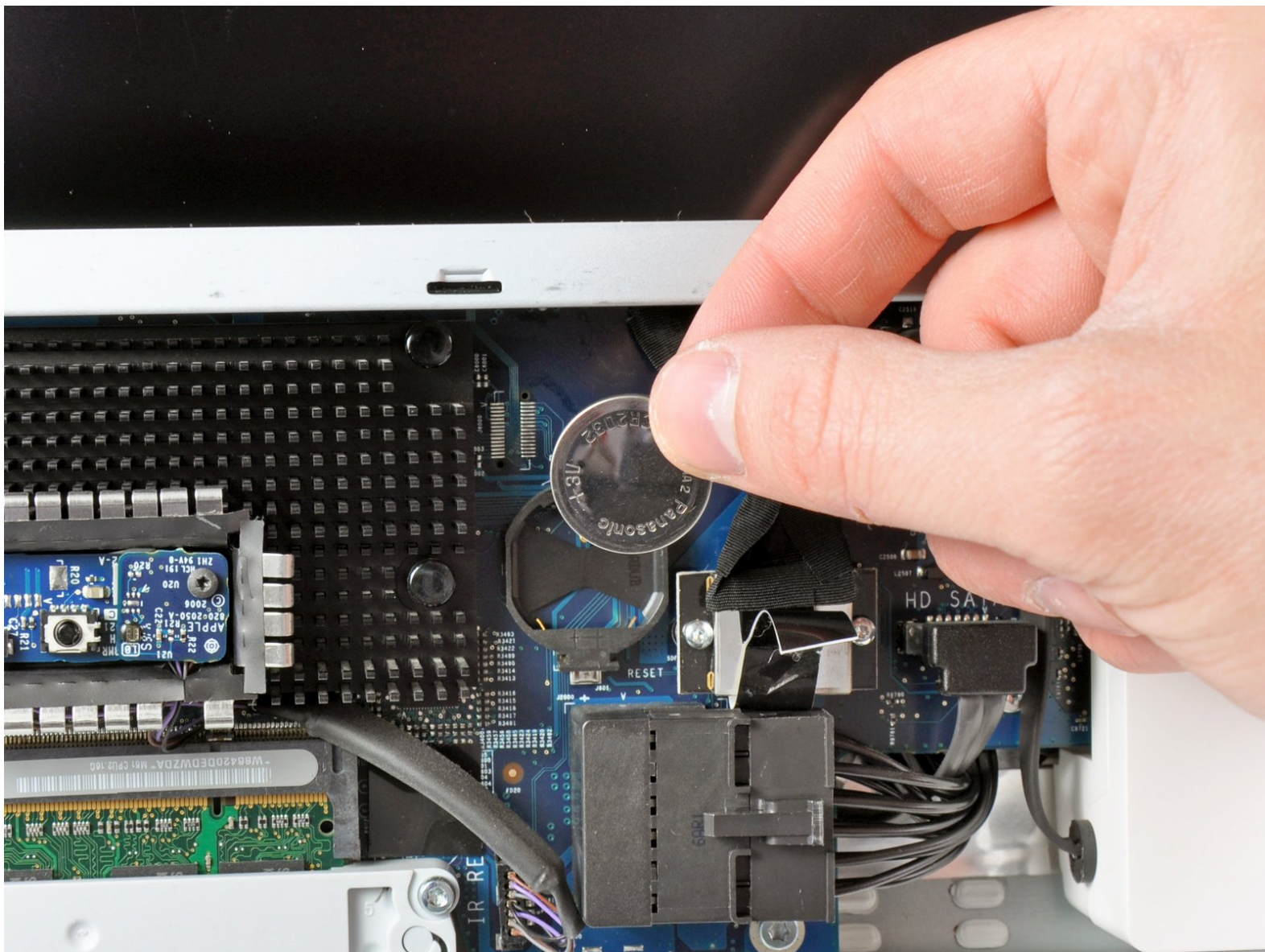




iMac Intel 24" EMC 2111 PRAM Battery Replacement

Replace a dead PRAM battery on your iMac Intel 24" EMC 2111.

Written By: Andrew Bookholt



INTRODUCTION

Use this guide to replace a dead PRAM battery.

TOOLS:

- [Phillips #1 Screwdriver](#) (1)
 - [Spudger](#) (1)
 - [T8 Torx Screwdriver](#) (1)
-

Step 1 — Access Door



- Loosen the two Phillips screws securing the access door to your iMac.
- ⓘ Both screws remain captive within the access door.
- Remove the access door.

Step 2 — Front Bezel



- Remove the following screws along the lower edge of your iMac:
 - Three 6 mm T8 Torx screws
 - One 8 mm T8 Torx screw

Step 3



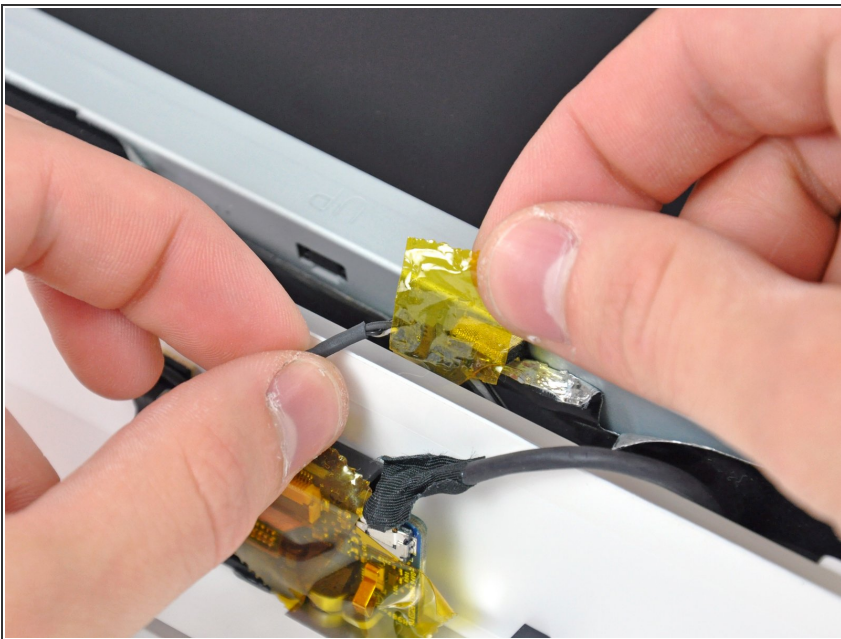
- ① Lay your iMac stand-side down on a flat surface.
- To lift the front bezel off the iMac, simultaneously:
 - Use your thumbs to press in the RAM arms and hold the iMac down.
 - Use your index fingers to pull the small bridge of material on the front bezel toward yourself.
 - Pull the front bezel up with your index fingers.
- Once the small bridge of material has cleared the RAM arms, lift the front bezel by its lower edge just enough to clear the bottom edge of the rear case.

Step 4



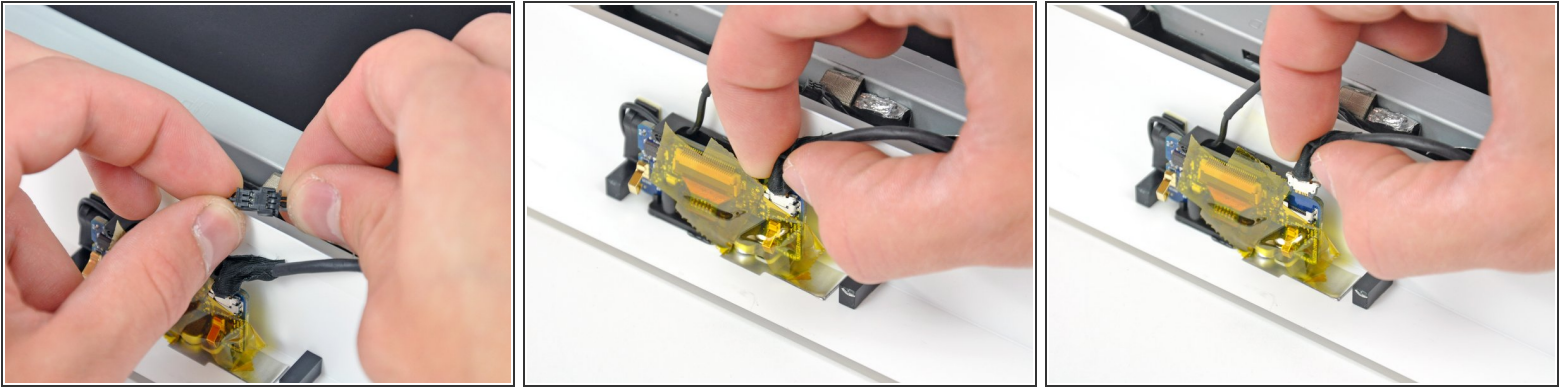
- Lift the front bezel off the rear case and rotate it away from the bottom edge of the iMac, minding the camera and microphone cables still attached to its upper edge.
- ⓘ The third picture shows the top front bezel brackets and their slots cut into the top edge of the iMac's rear case.
- ⚠ Do not completely remove the front bezel, as it is still attached by the camera/microphone cables.

Step 5



- ⓘ If necessary, remove the strip of tape covering the microphone cable connector.
- ★ The microphone connector is located near the inside of top edge of your iMac.

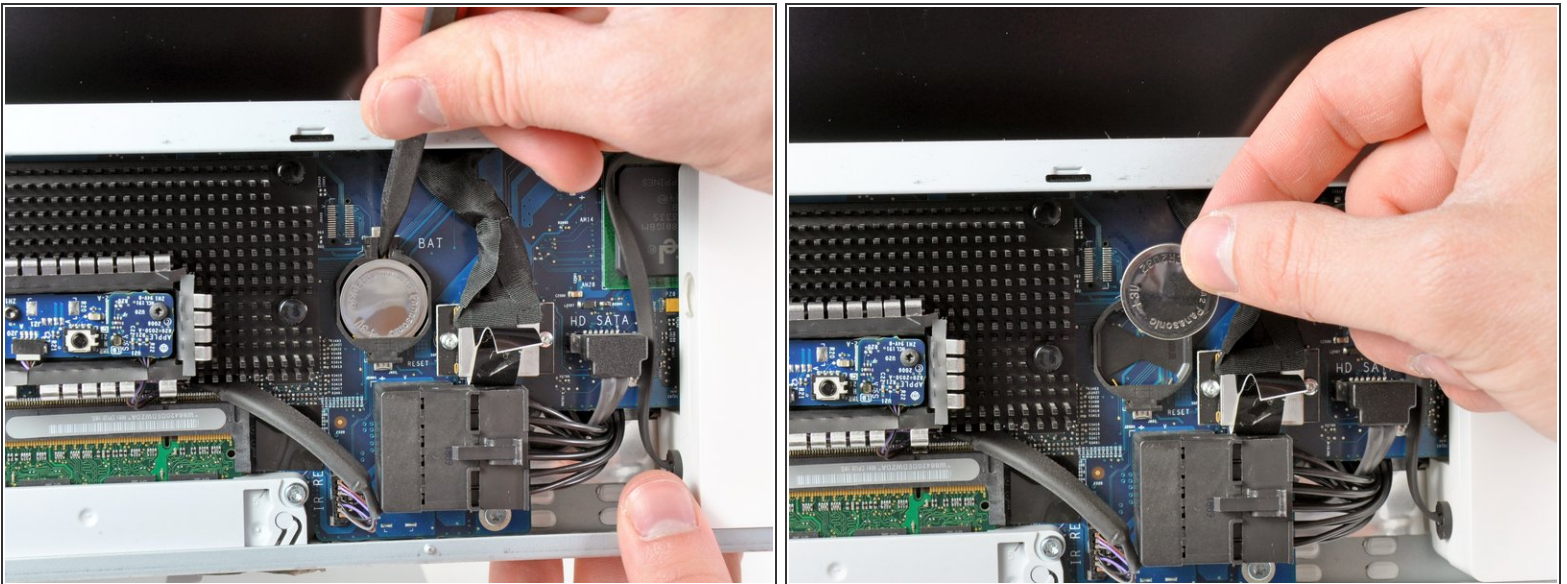
Step 6



- Disconnect the microphone cable.
- Disconnect the camera cable by pulling its connector away from the socket on the camera board.

⚠ The camera cable connector and socket are delicate and easily bent. Remove with caution.

Step 7 — PRAM Battery



- Use the tip of a spudger to pry the PRAM battery out of its socket on the logic board.
- Remove the PRAM battery.

⚠ Be sure to replace the battery with a new CR2032 Lithium battery cell.

To reassemble your device, follow these instructions in reverse order.