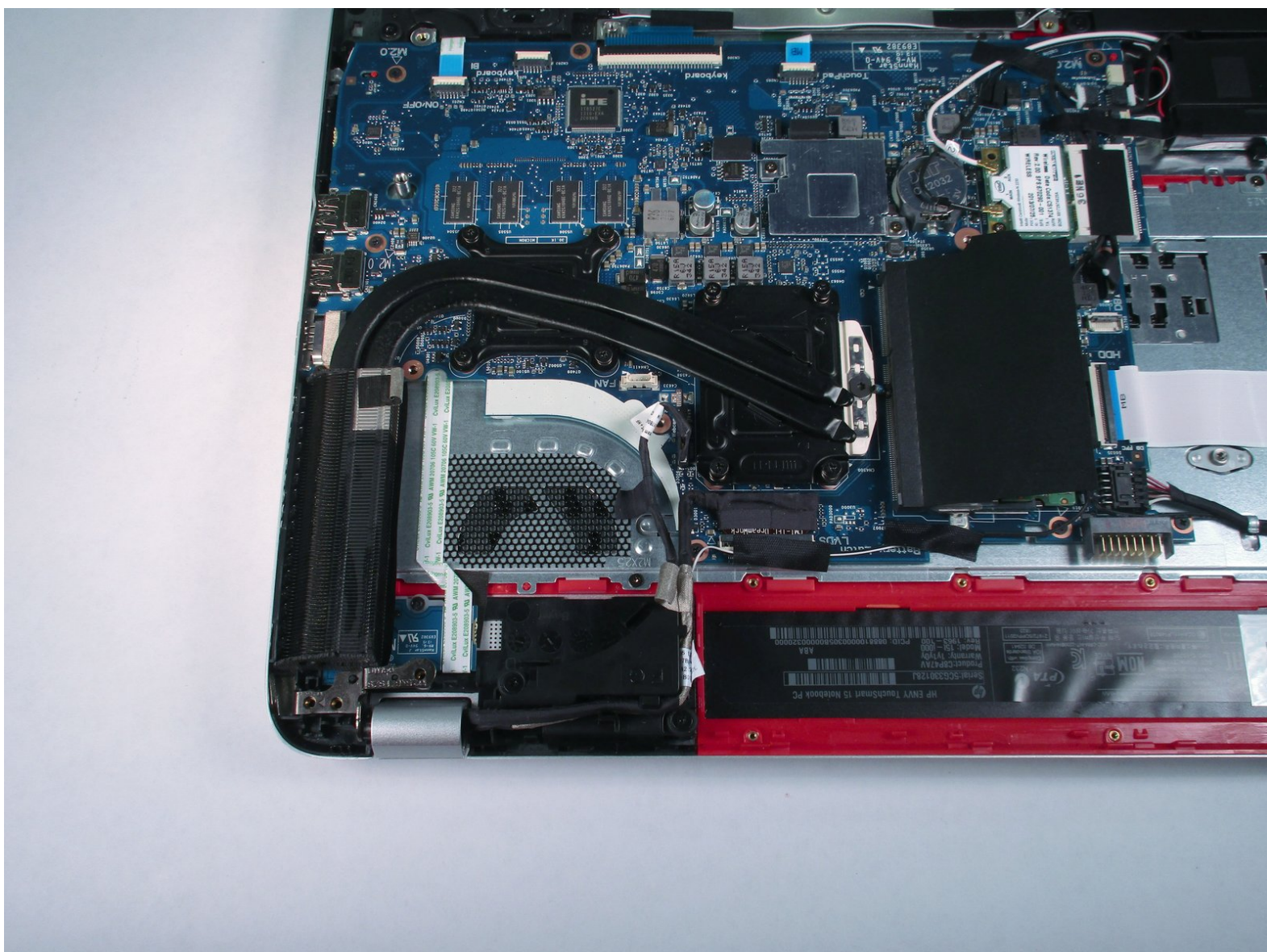




Disassembling HP Envy TouchSmart 15 Heat Sink

You may need to replace or re-seat your...

Written By: Ramon Villadonga



INTRODUCTION

You may need to replace or re-seat your heatsink if your computer constantly overheats and you don't hear any unnatural sounds from the fan. You will need some new thermal paste to apply.



TOOLS:

- [Phillips #00 Screwdriver](#) (1)
 - [Phillips #1 Screwdriver](#) (1)
 - [iFixit Opening Tool](#) (1)
 - [Phillips #0 Screwdriver](#) (1)
-

Step 1 — Battery



- Press the battery release tab and the battery will pop up.

Step 2



- Remove the battery from the laptop, it will come out easily.

Step 3 — Accessory Plate



- Remove the single screw holding the accessory plate. This is a PH0 2.0x2.5 screw.

Step 4



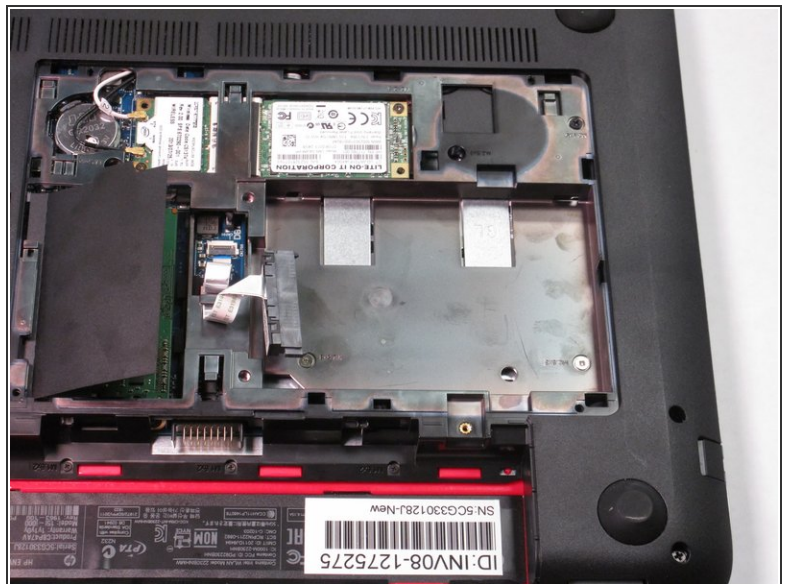
- Pry the accessory plate up from the back of the laptop by applying force upwards where the screw was removed.

Step 5 — Hard Drive



- Use the plastic opening tool to pry the hard drive away from the board. Notice that there is a slit centered at the back of where the hard drive is sitting. This is where you'll insert the plastic opening tool as shown in the photo. Finally, pry with the plastic opening tool to remove the hard drive.

Step 6



- Firmly grasp the connector's base as shown and pull to remove from the hard drive.

Step 7 — Solid State Drive



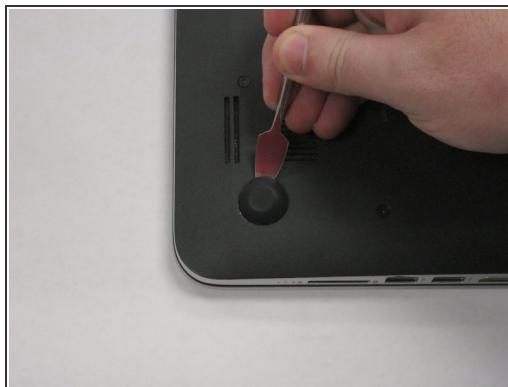
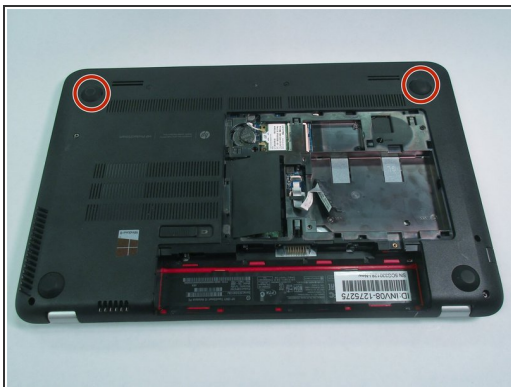
- Remove the PM 2.0x2.5 screw with the PH#0 Screwdriver attachment that is shown at the corner of the Solid State Drive.
- After you have removed the screw, the Solid State Drive should lift up.

Step 8



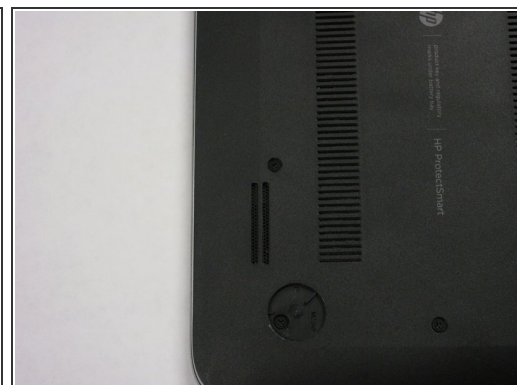
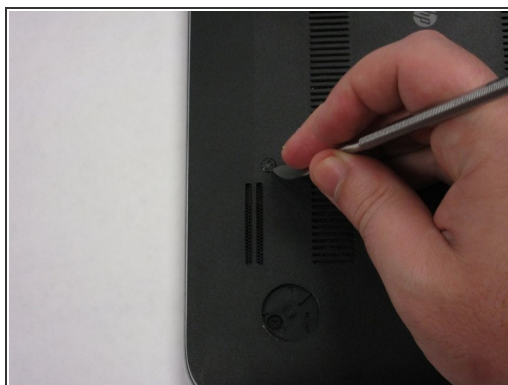
- Very carefully, remove the SSD by gently pulling away from the SSD socket.

Step 9 — Back Plate



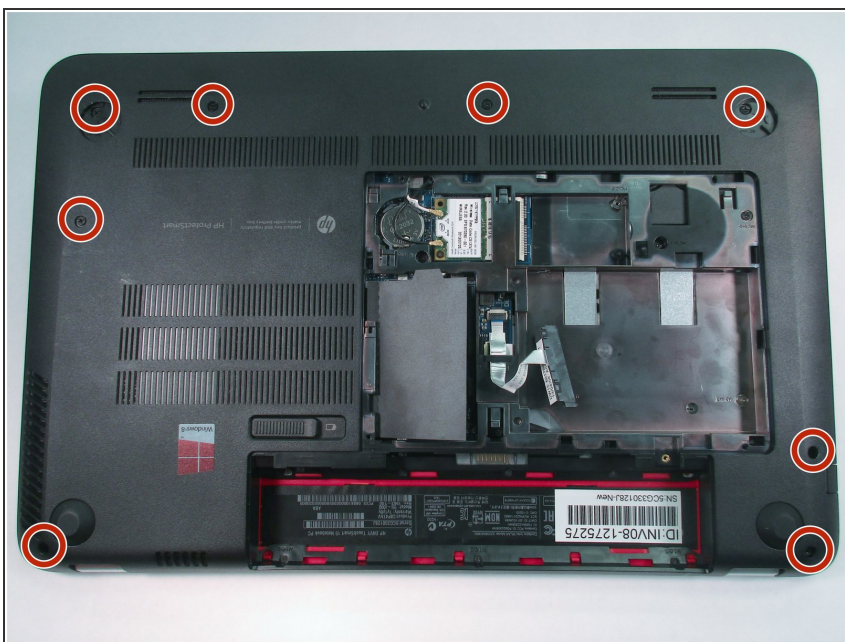
- Remove the highlighted rubber stoppers with a metal spudger as pictured. They should expose a screw that you will need to remove in a later step.

Step 10



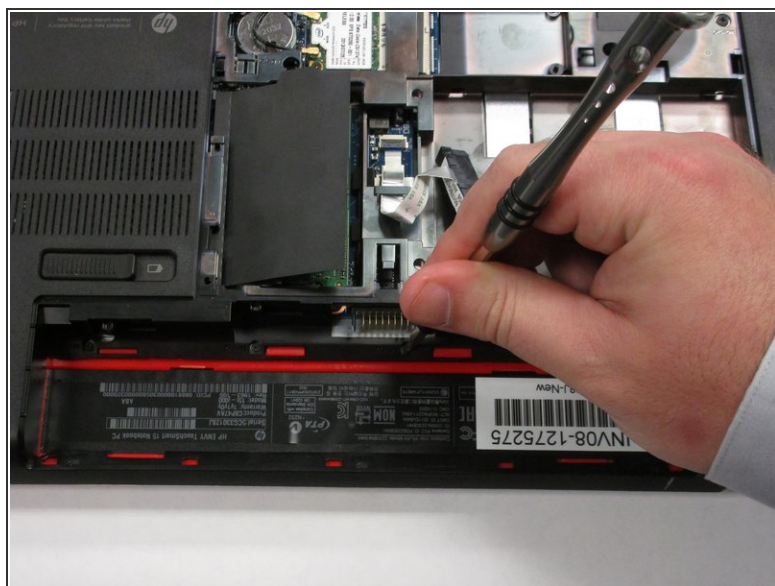
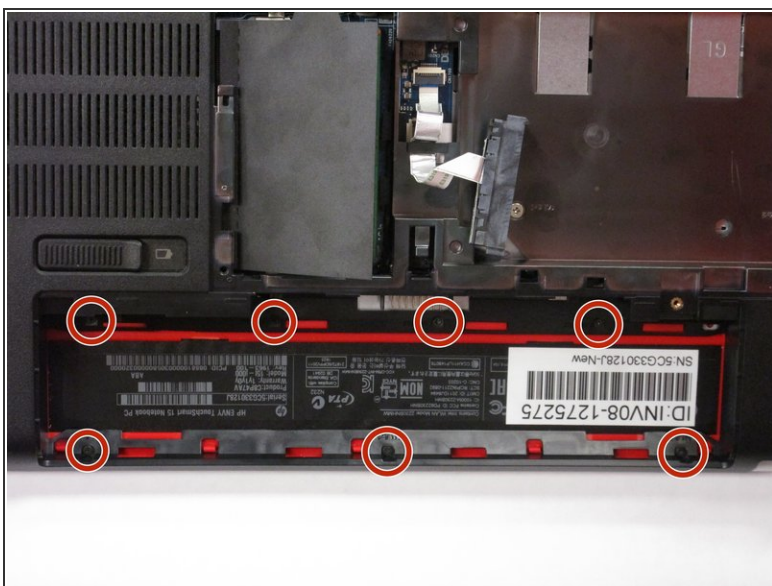
- Remove plastic cover highlighted. It should expose a screw that you will need in a later step.

Step 11



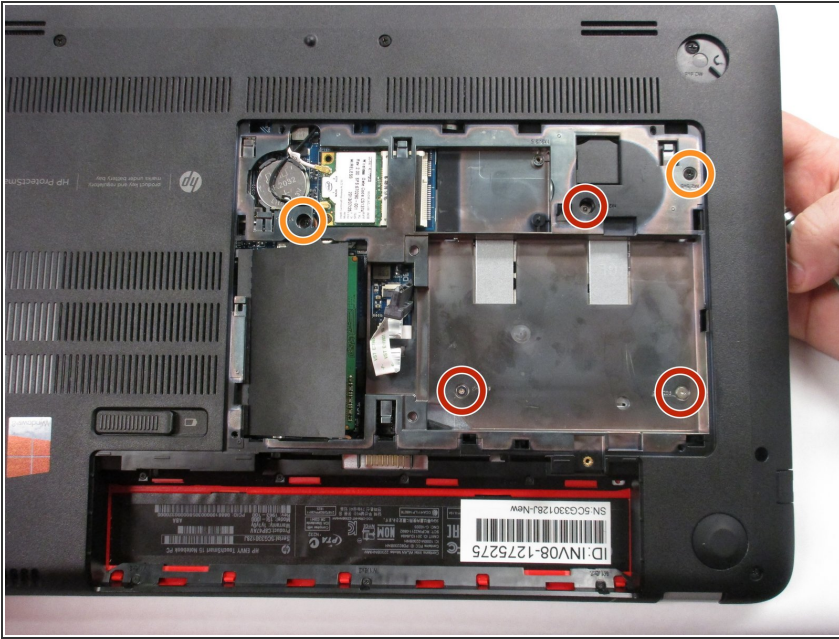
- Remove all highlighted screws with PH 1 screwdriver. These screws are PM 2.0x2.5.

Step 12



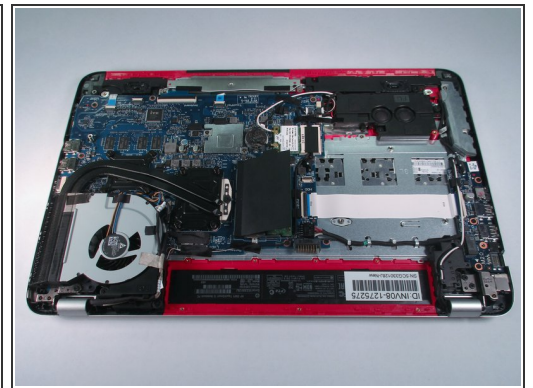
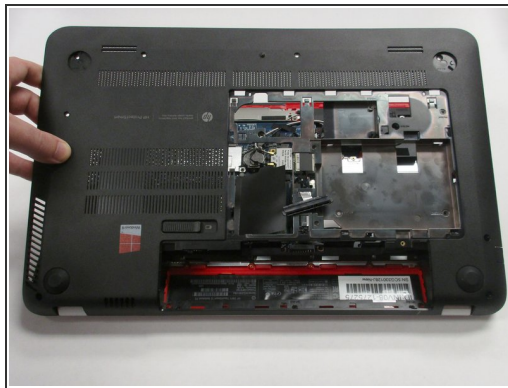
- Remove all highlighted screws from the battery access area. These are PM 1.5x2.0 screws

Step 13



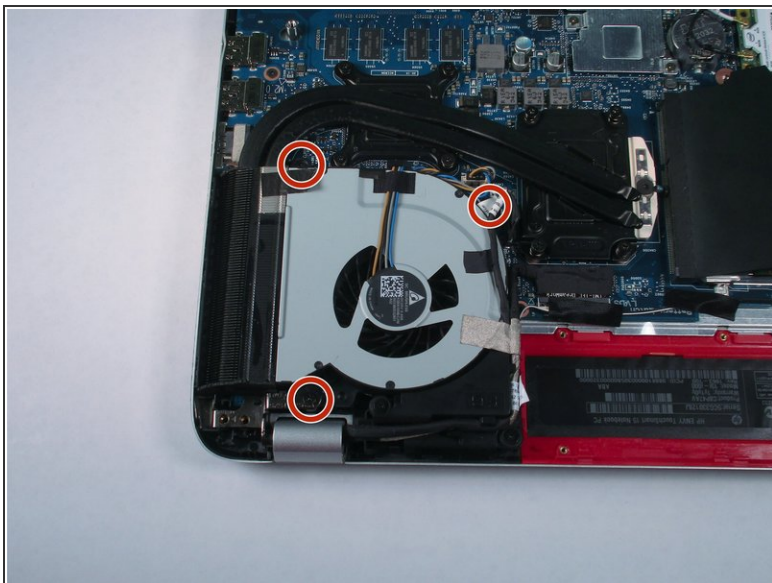
- Remove screws highlighted with PH1 screwdriver from accessory plate area. These are PM 2.5x3.0 screws
- Remove screws highlighted with PH1 screwdriver from accessory plate area. These are PM 2.5x4.5 screws

Step 14



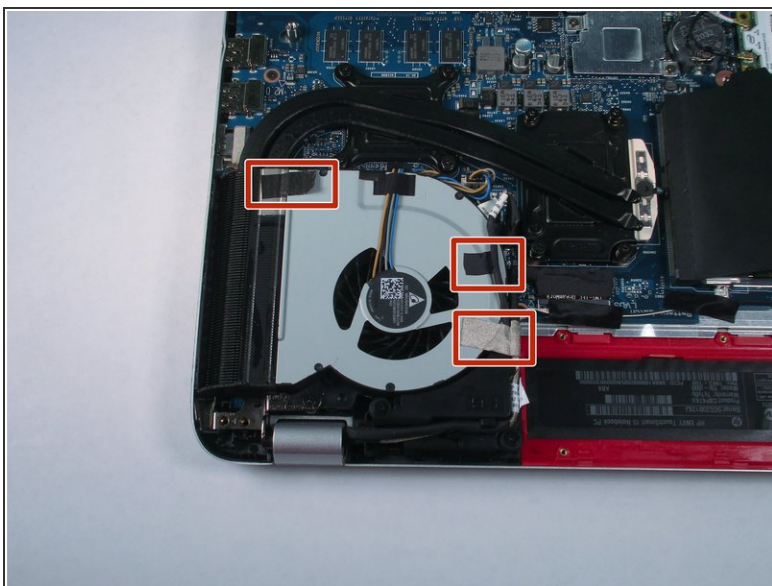
- Pry open back plate area with plastic opening tool. The back plate should pry open with relative ease. If you feel some resistance at any point please refer to steps 2-5 because a screw has probably been missed.

Step 15 — Fan



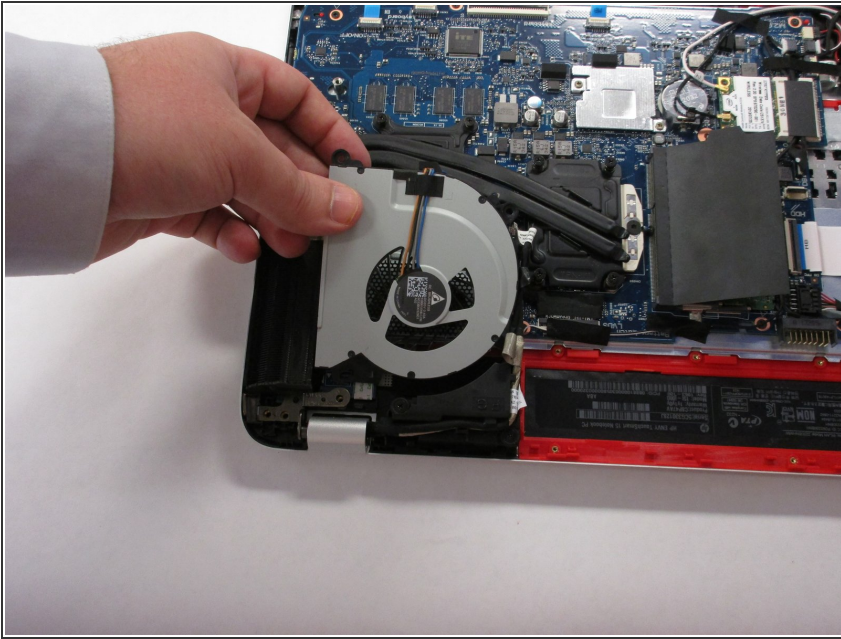
- There are 3 screws holding the fan in place. These are PM 2.5x4.5 screws

Step 16



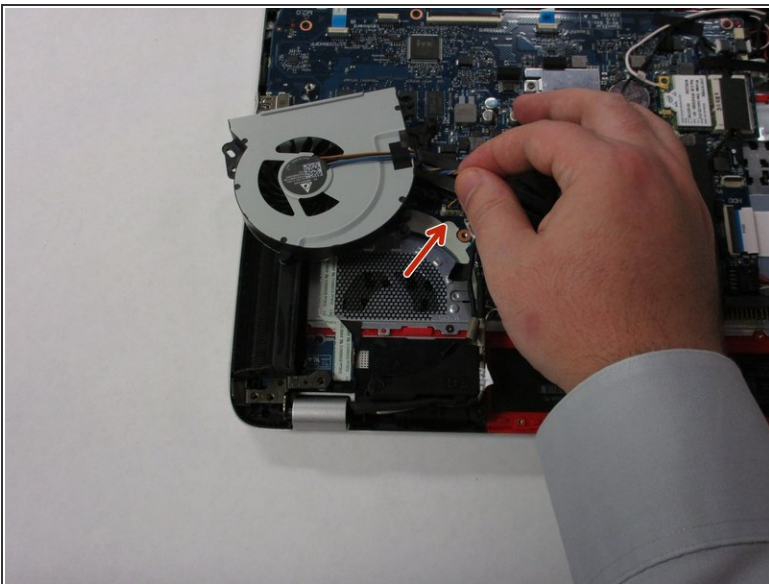
- There are 3 strips of tape. Remove them with your hand.

Step 17



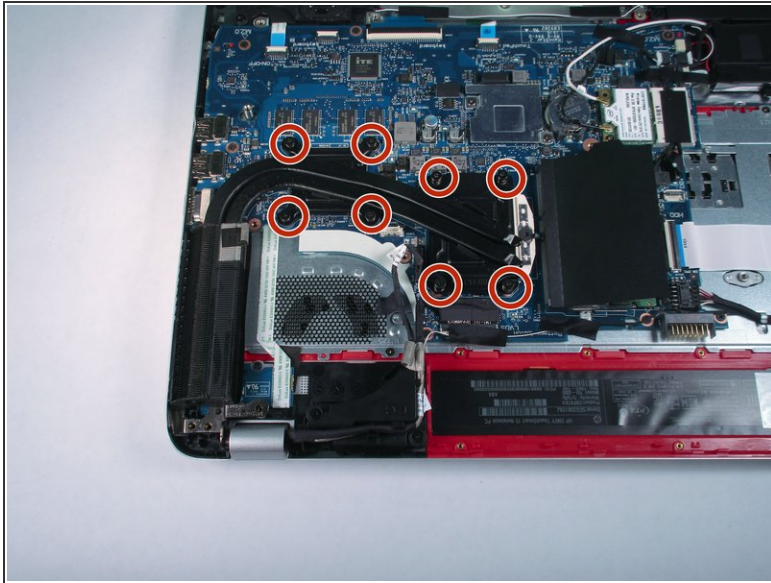
- Remove the fan by sliding it out and pulling it upwards. Set the fan off to the side to reveal the connector.

Step 18



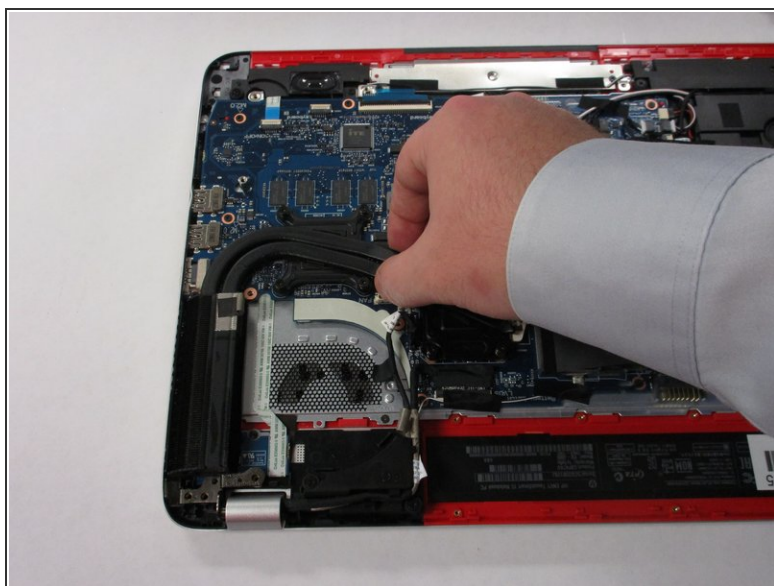
- Remove the black connector from the white insert shown at the center of the picture just below the fingers pinching the black connector.
- The connector will come out straight up.

Step 19 — Heat Sink



- You should see eight screws. Each screw should have a corresponding number under it.
- Unscrew each screw in with PH 1 Screw driver in numerical order. The screws will not come all the way out. Rotating the screw four to five times should make it loose enough to proceed. These are PM 2.0x11.0

Step 20



- Grab the middle of heat sink like in picture one. Pull straight up, it should come off fairly easy. If there is some resistance go back to the previous step.

To reassemble your device, follow these instructions in reverse order.