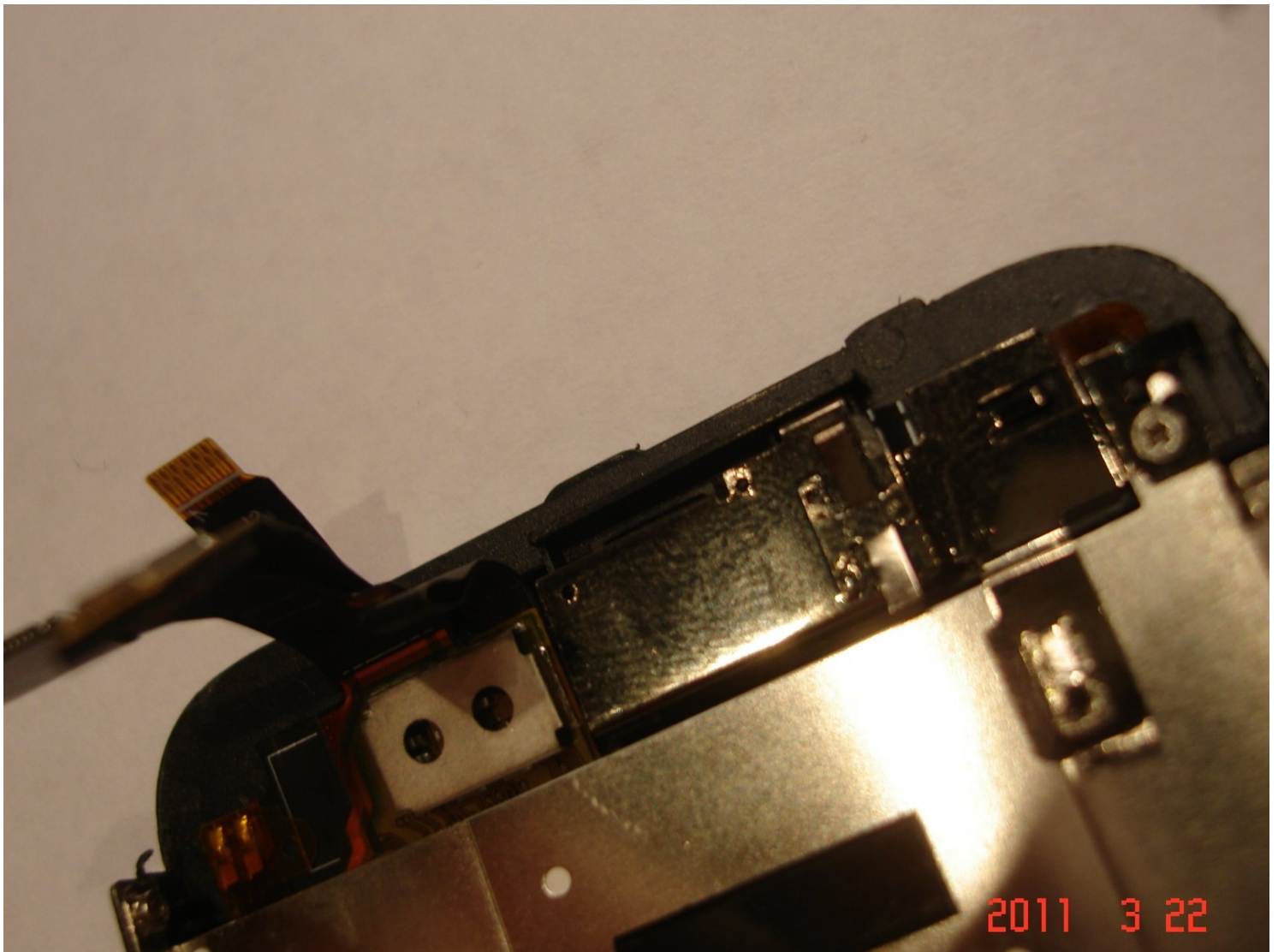




iPhone 3GS Proximity Sensor Ribbon Replacement

To find out how to remove the screen assembly...

Written By: [hectordtruong](#)



INTRODUCTION

To find out how to remove the screen assembly for an iPhone 3GS please go to [Installing iPhone 3GS Display Assembly](#).

Removal of the original ribbon is a bit tricky. I use an automotive type of pick tool to remove the existing ribbon bracket. Read on for details on this repair.

NOTE: Many vendors online sell defective units, and these ribbons damage easily. When buying, buy a few because you may go through 3-4 before you get a good one.

For more info about me and my repairs, check out my blog. I do a lot of microsoldering repairs and what not.

[My blog of DIY and repair things for the iphone!](#)

ALSO PLEASE CLICK "I DID IT" when you finish this repair! It'll help me help you more! Thanks!

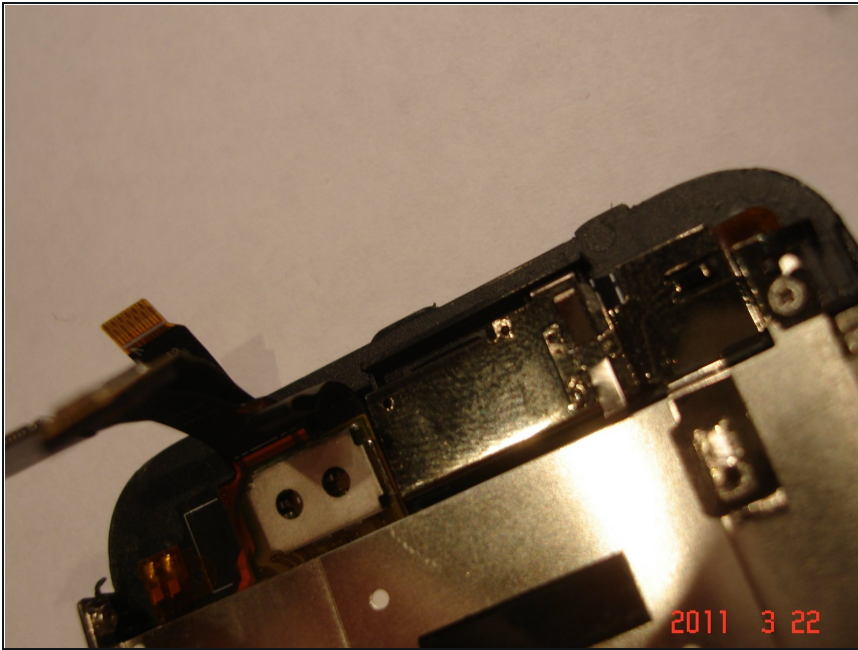
TOOLS:

[Phillips #0 Screwdriver](#) (1)

[iFixit Opening Tool](#) (1)

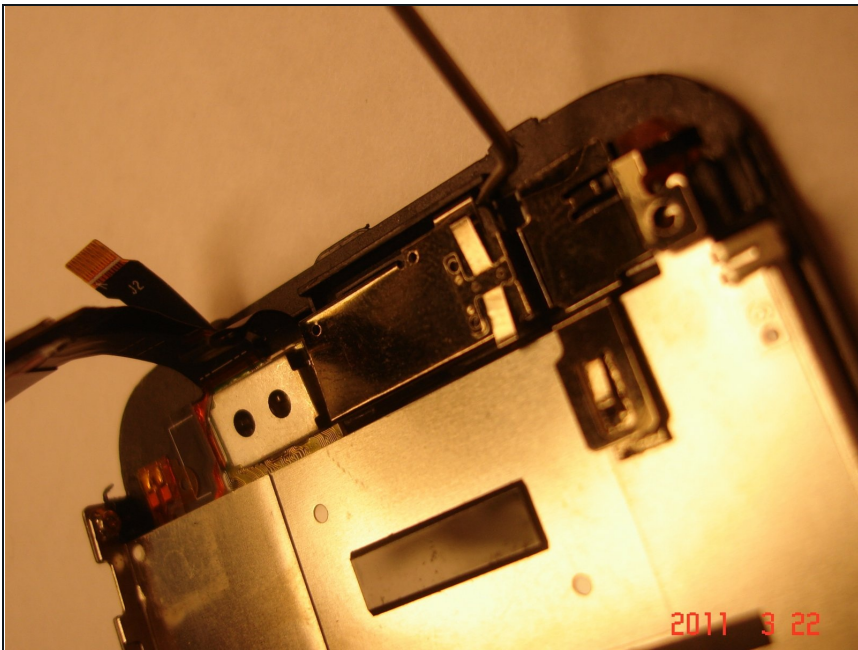
[Spudger](#) (1)

Step 1 — Proximity Sensor Ribbon



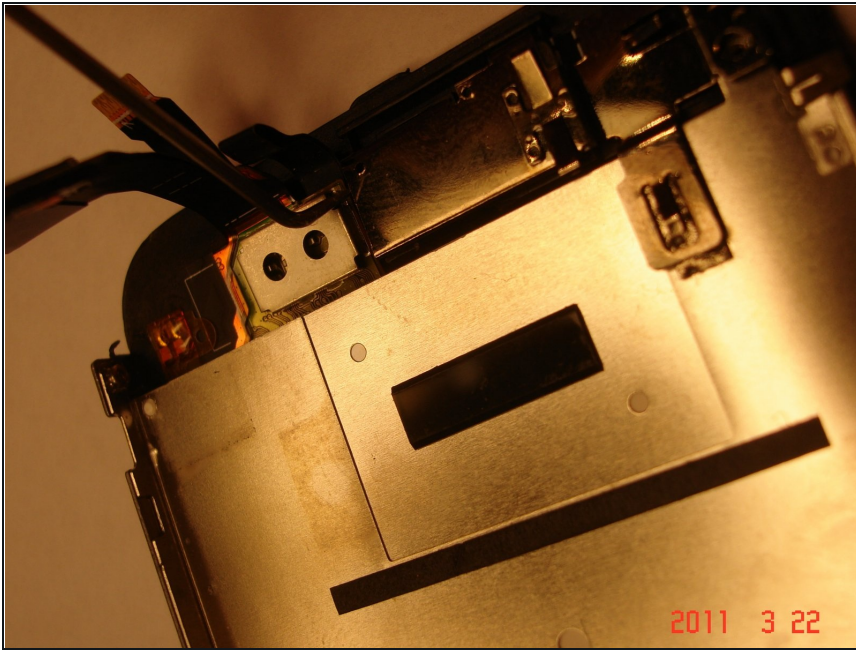
- Remove the screw that holds this bracket in and put it in a safe place.

Step 2



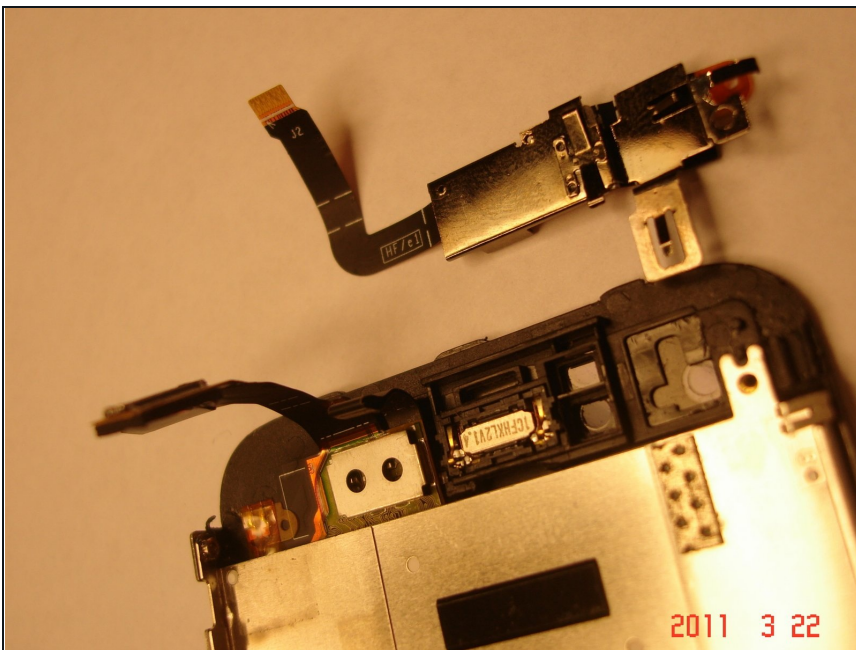
- Use an automotive pick tool to lift the bracket up on the side of where the speaker lies. Slight upward pressure, do not force or pry.

Step 3



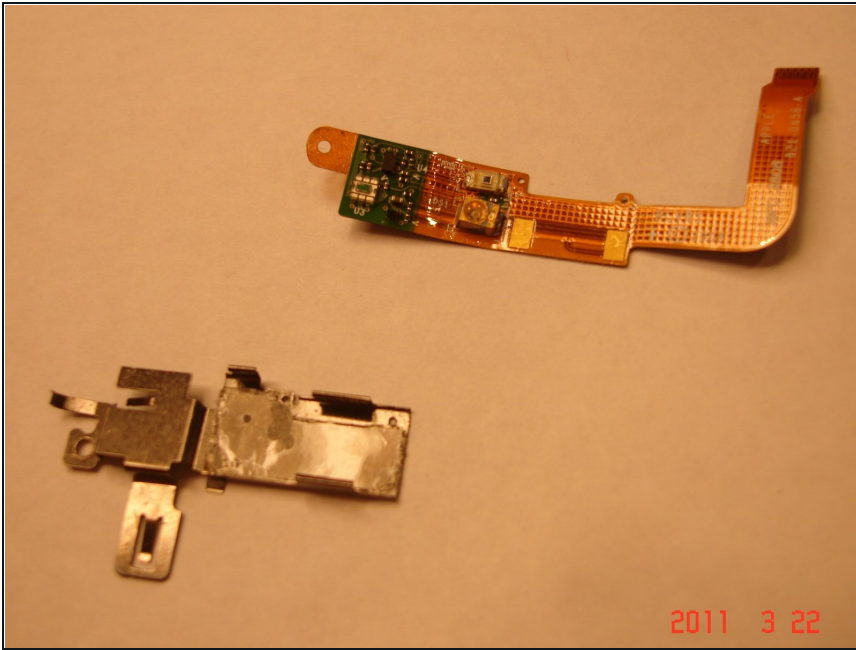
- Do the same with the other side and on the bottom of the bracket. This is held in with tension on fingers that clip into the screen midframe.

Step 4



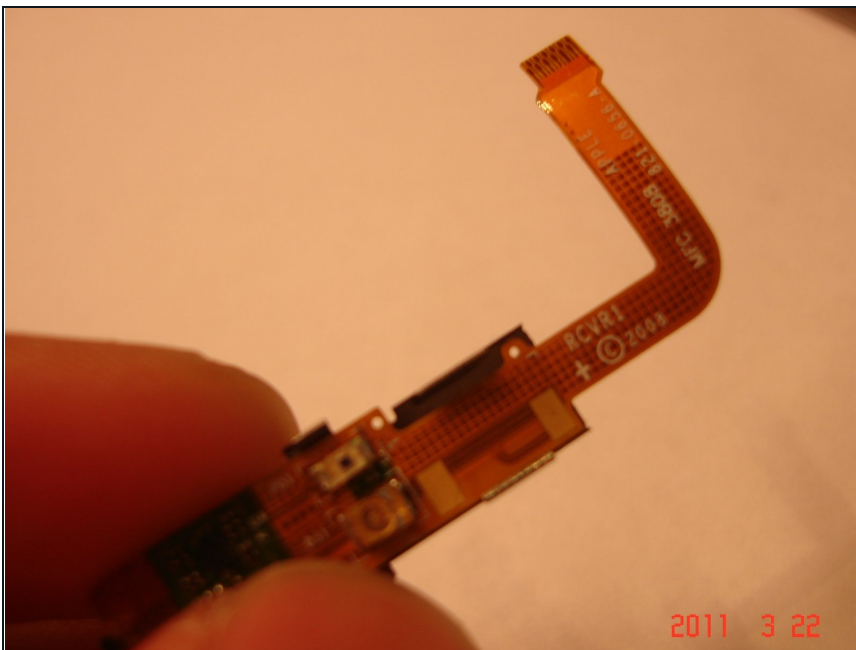
- Once the bracket is loose, you can pull it up carefully maneuvering it up and around the LCD and digitizer connectors.

Step 5



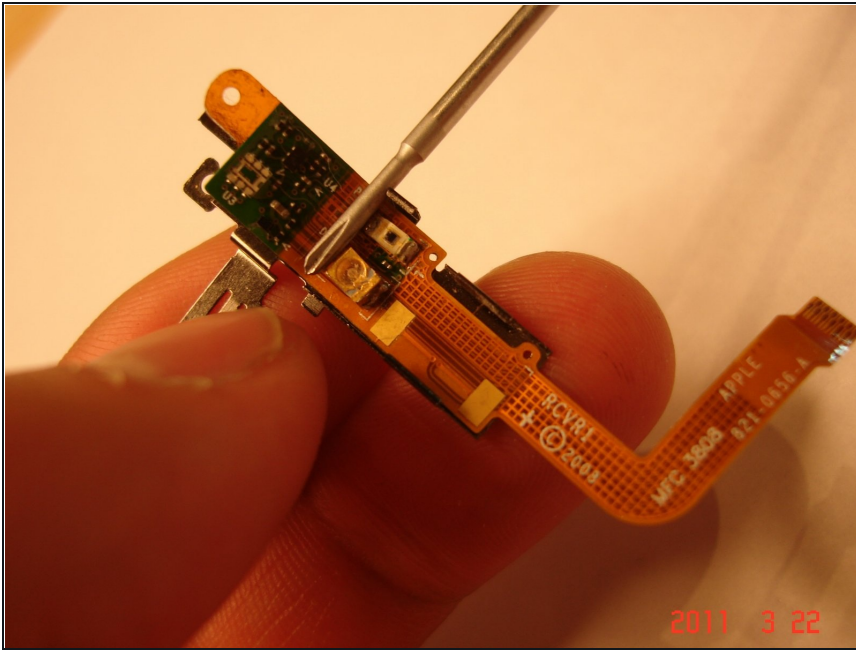
- Peel the old ribbon from the bracket, note the orientation.

Step 6



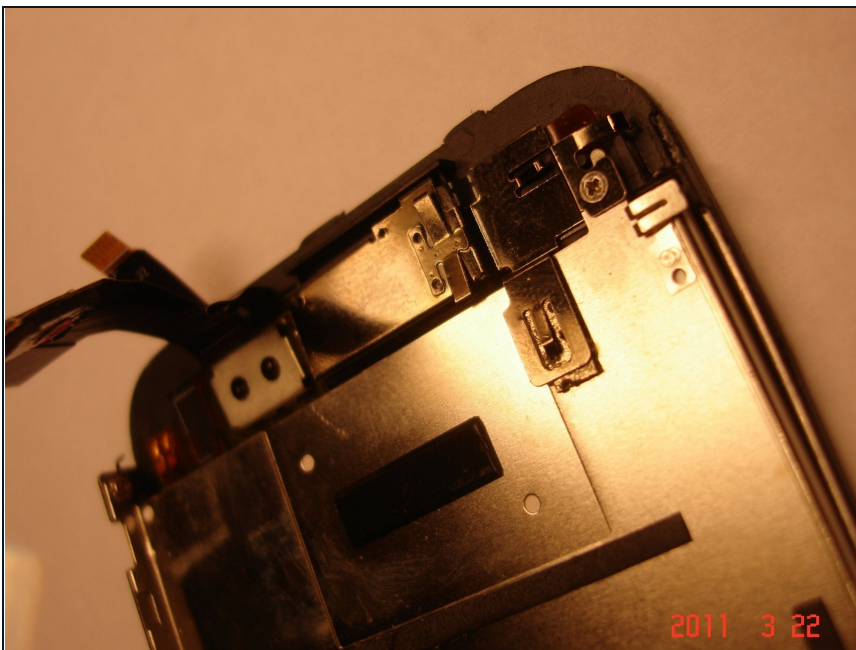
- Peel off the adhesive backing protectors from the new ribbon, and line up the holes in the ribbon with the ones on the bracket as so.

Step 7



- Use a small screwdriver's shaft to conform the new ribbon to the bracket's contour. Light pressure is only needed.
- At the top of the ribbon, note that there are two small holes. Align them with the two holes in the metal piece for a perfect fit.

Step 8



- Lift the digitizer and LCD connectors and snap in the bracket/ribbon combo to finish it off.

To reassemble your device, follow these instructions in reverse order.

