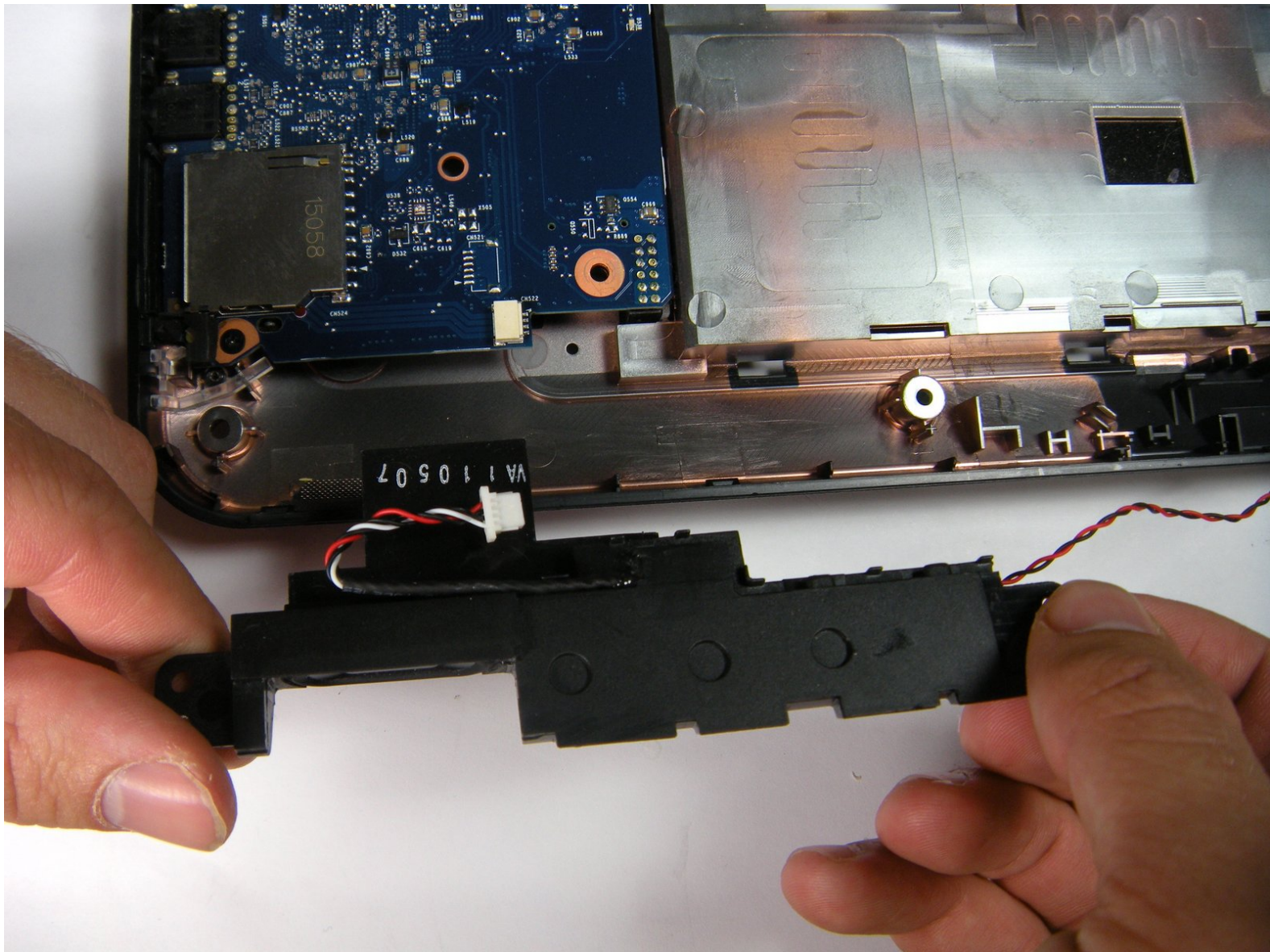




HP Pavilion g6-1b79dx Speaker Replacement

To remove the laptop's speakers, many...

Written By: Rachel Gallegos



INTRODUCTION

To remove the laptop's speakers, many components within the laptop need to be removed. This is a guide to do so.



TOOLS:

- [Phillips #00 Screwdriver](#) (1)
 - [iFixit Opening Tool](#) (1)
 - [Spudger](#) (1)
-

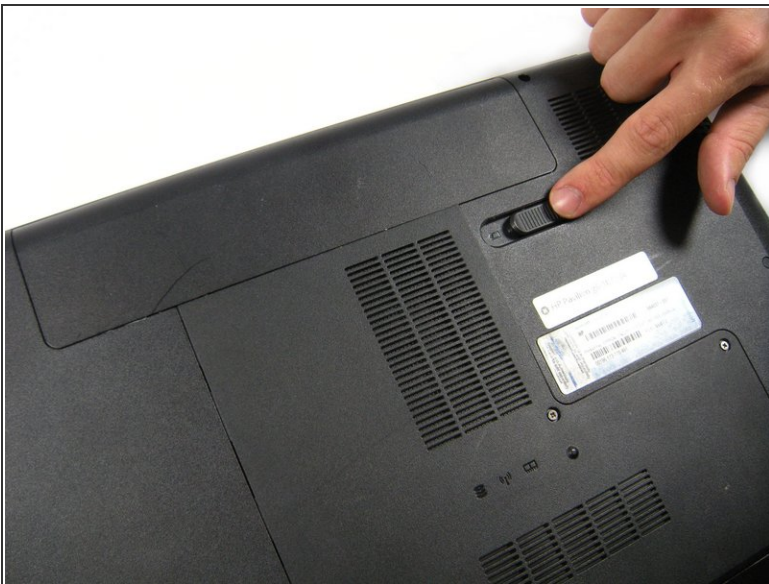
Step 1 — Battery



- Flip the computer so the bottom is facing up with the battery away from you.

⚠ Turn off the computer and disconnect the charger.

Step 2



- Slide the battery switch to the left until the battery unlatches from the base of the laptop.

Step 3



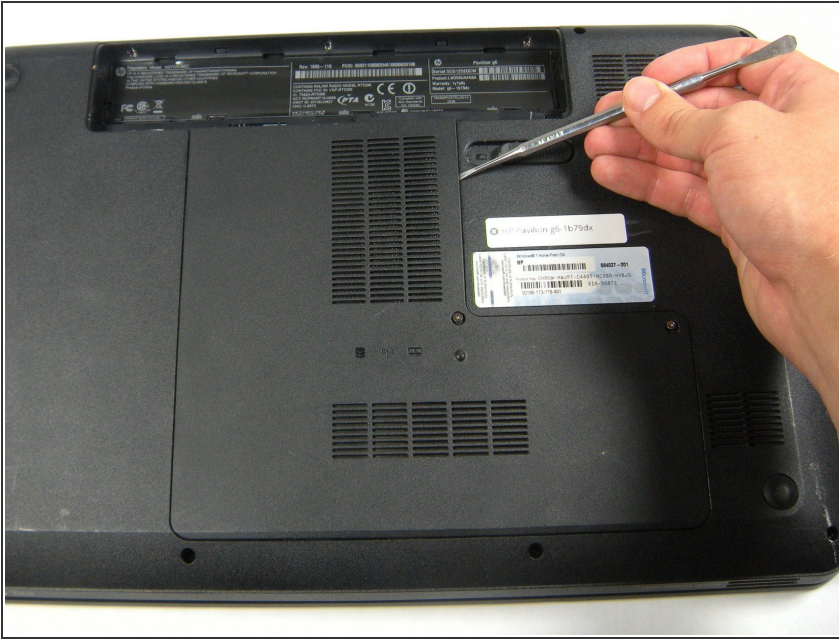
- Lift the battery from its compartment away from the laptop.

Step 4 — Bottom Panel



- Loosen the two 5.7 mm screws on the bottom panel using a PH00 screwdriver.
- ⚠ The screws do not come out of the panel due to small washers. Do not try to remove the screws completely.

Step 5

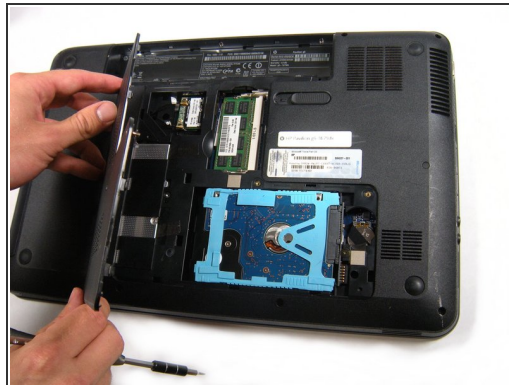


- Use the metal spudger all around the panel to pop it up from the base.

⚠ When working with electronics, it's important to choose a tool that's ESD-safe to avoid accidental damage to the device. The regular black nylon spudger or a plastic opening tool should be used whenever possible.

- ① Using your finger is acceptable but not entirely recommended. Be gentle if you choose to use your hands.

Step 6



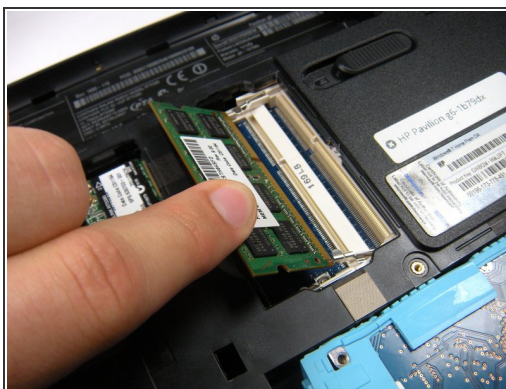
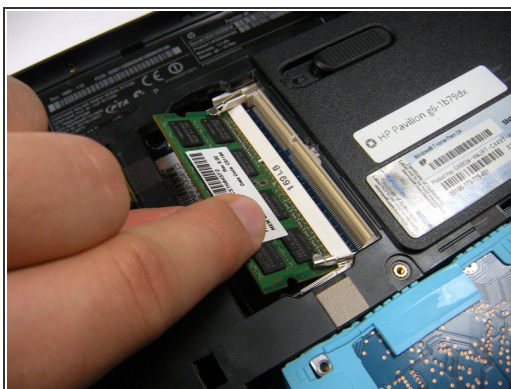
- With your hands, lift the panel completely off the base of the laptop.

Step 7 — RAM



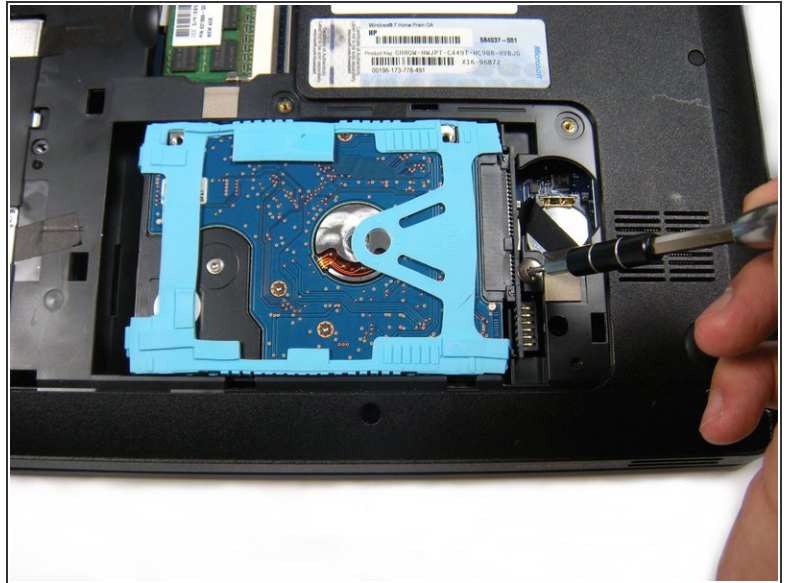
- Slide the two latches away from the RAM to unhook it.

Step 8



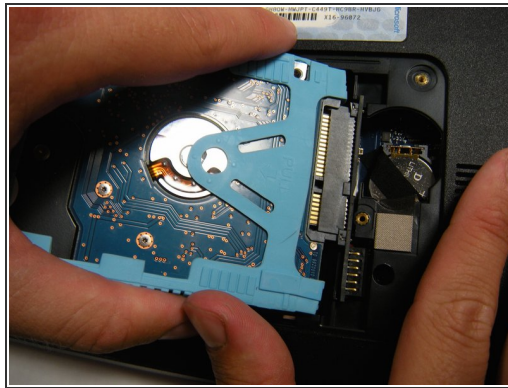
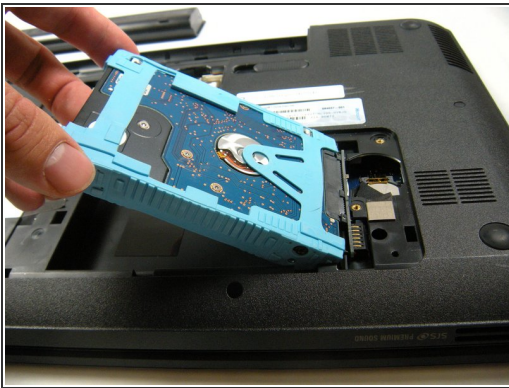
- Gently slide the RAM out from the laptop.

Step 9 — Hard Drive



- Use the PH 00 screwdriver to unscrew the 2.5 mm screw to the right of the hard drive.

Step 10



- Pull the triangular blue tab to disconnect and remove the hard drive. You can see the word 'Pull' on the cover.

Step 11 — Wireless Card



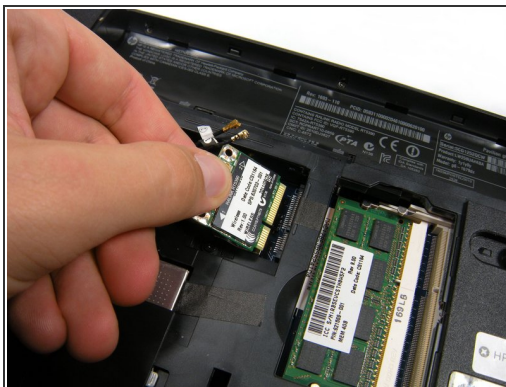
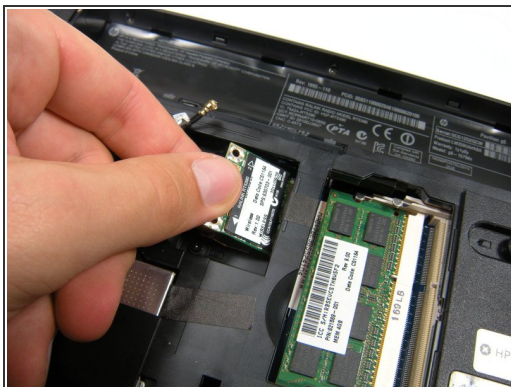
- Unlatch the two antenna cable connectors from the wireless card.

Step 12



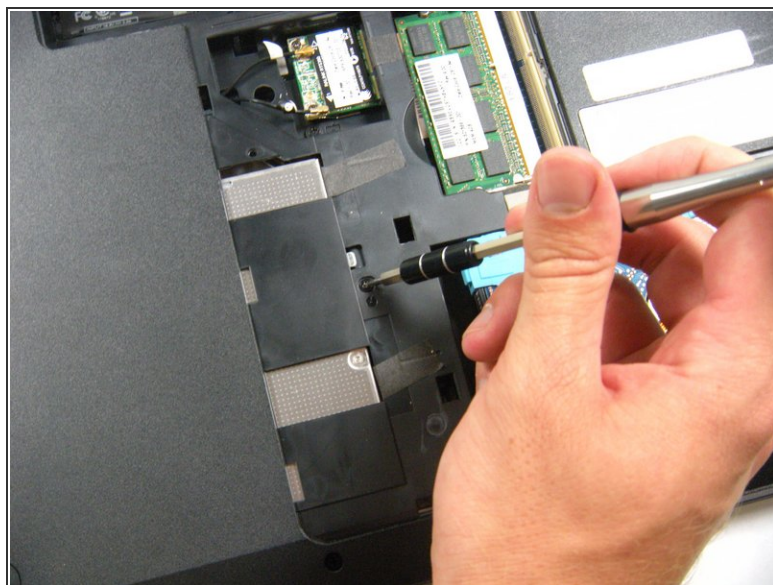
- Remove the two 2.5 mm screws in the wireless card with a PH00 screwdriver.
- ⓘ You may have to gently bend the cables away from the wireless card to remove the screws

Step 13



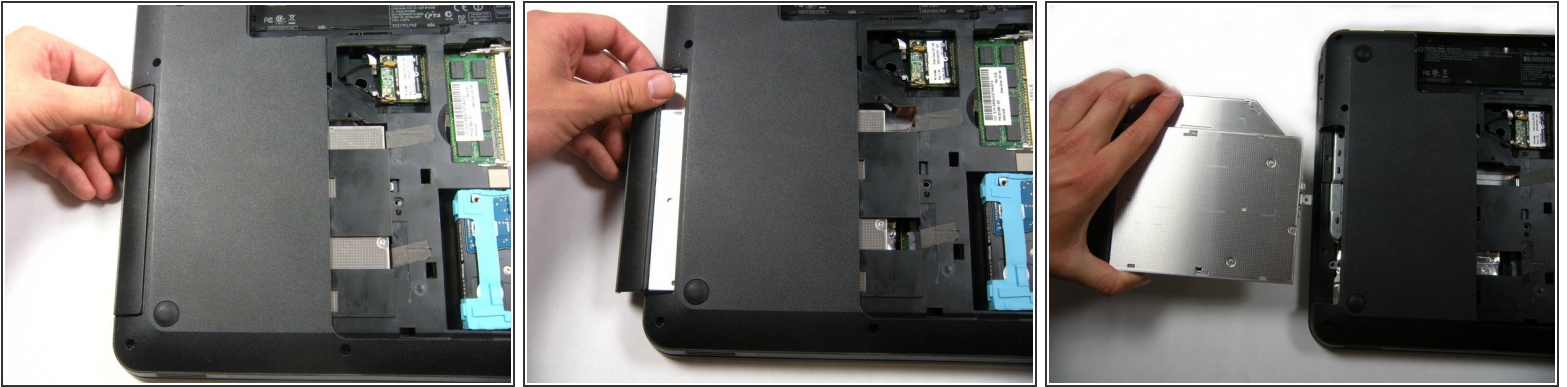
- Gently disconnect the wireless card from the laptop.

Step 14 — CD Drive



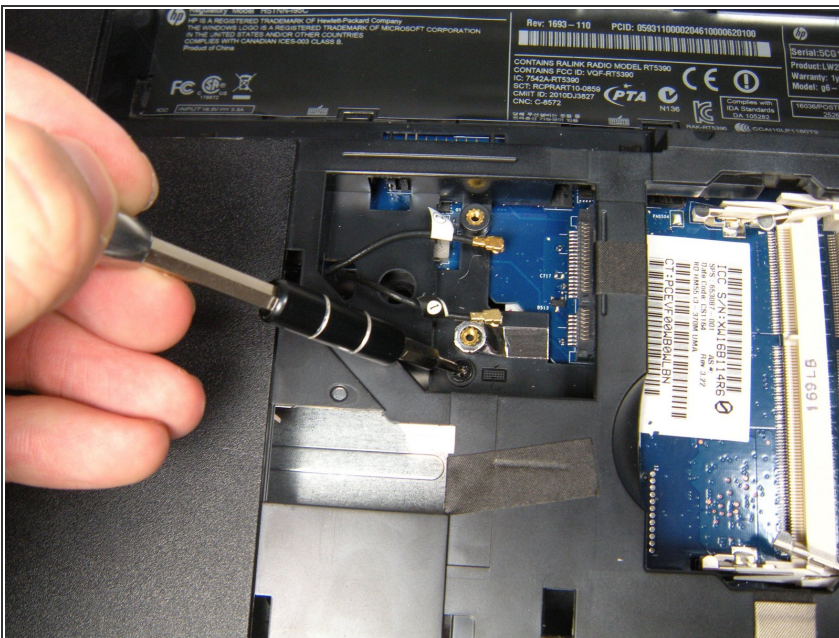
- Using the PH 00 screwdriver, remove the screw left of the CD drive.

Step 15



- Slide the CD drive out from the exterior of the laptop.

Step 16 — Keyboard



- Using a PH 00 screwdriver, remove the screw located next to the wireless card.
- ⓘ You can remove the wireless card for this process but it is not necessary.
- ⓘ This screw has a small keyboard icon next to it.

Step 17



- Flip the laptop over and open it.

⚠ The components beneath your computer may be loose and fall out when you flip the laptop. Be careful when turning it over.

Step 18



- Insert a **plastic** spudger or similar pry tool, beneath the keyboard, near the "insert" key, and pop the keyboard up from the laptop.

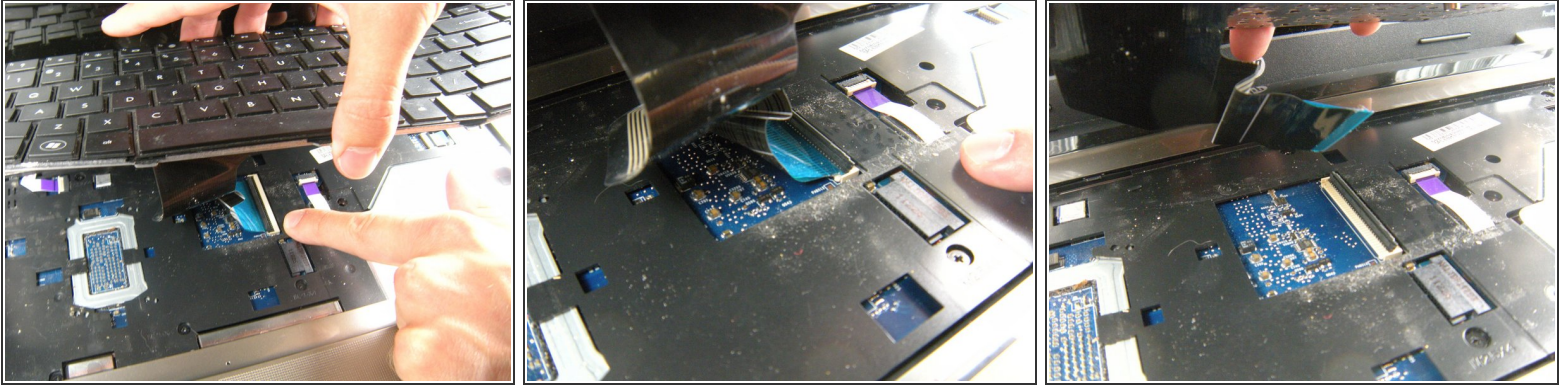
⚠ When working with electronics, it's important to choose a tool that's ESD-safe to avoid accidental damage to the device. The regular black nylon spudger or a plastic opening tool should be used whenever possible.

- Starting at the opening you just created, run your fingers around the outside of the keyboard separating it from the rest of the computer.

Only lift the keyboard up a few inches because it is attached to the laptop by a ribbon cable.



Step 19



- Slightly angle the keyboard back so the ribbon connector underneath it is visible.
- Remove the ribbon cable by using your fingers to pull up and away from the connector.

Step 20



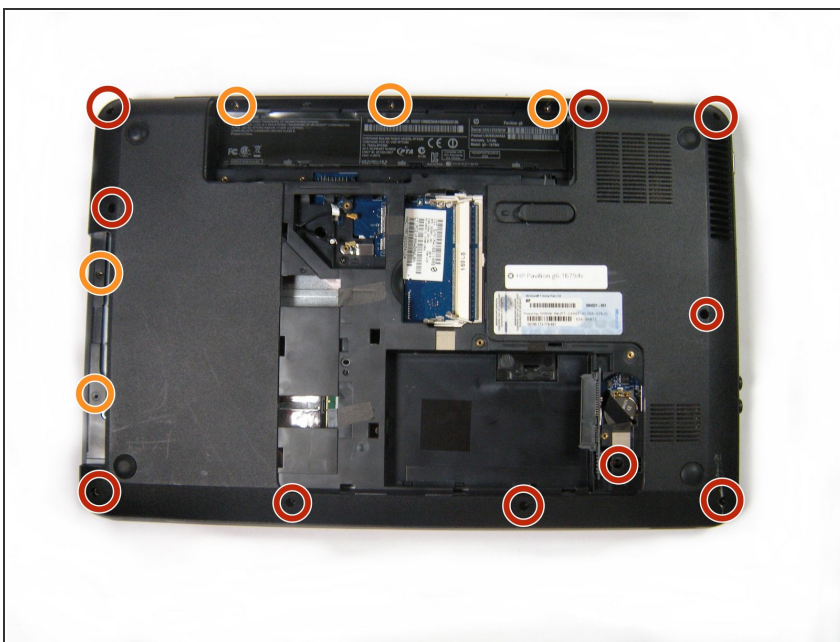
- With the ribbon cable detached, you can now completely remove the keyboard.

Step 21 — Speaker



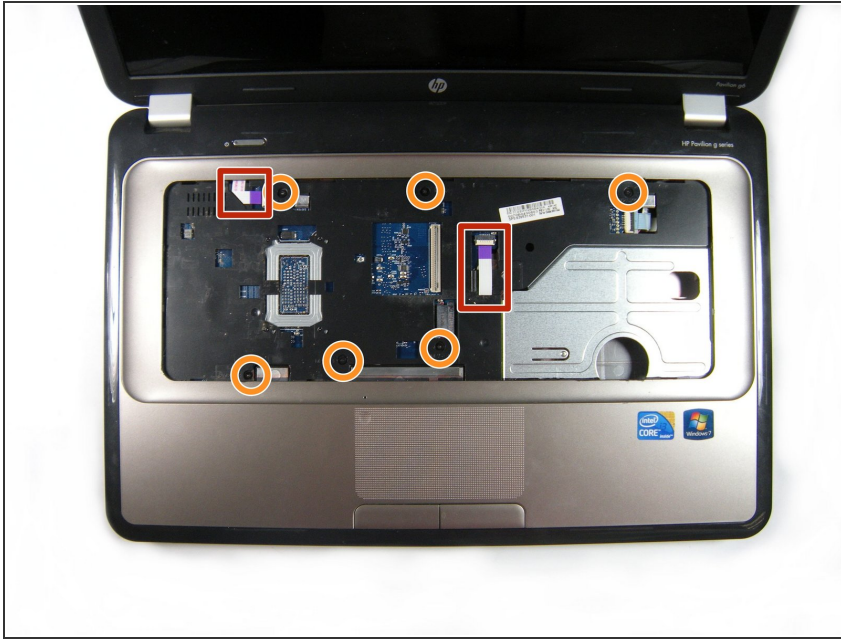
- With the laptop bottom facing up, locate the rubber plug on the right side of the computer.
- Use a metal splunger to remove the plug.

Step 22



- Remove the ten 6.7 mm screws using a PH00 screwdriver.
- Remove the five 3.4 mm screws using a PH00 screwdriver.

Step 23



- Flip the computer over and open it.
- Detach the two purple ribbons from the ribbon connectors.
- Unscrew the six 4.6 mm screws using the PH00 screwdriver.

Step 24



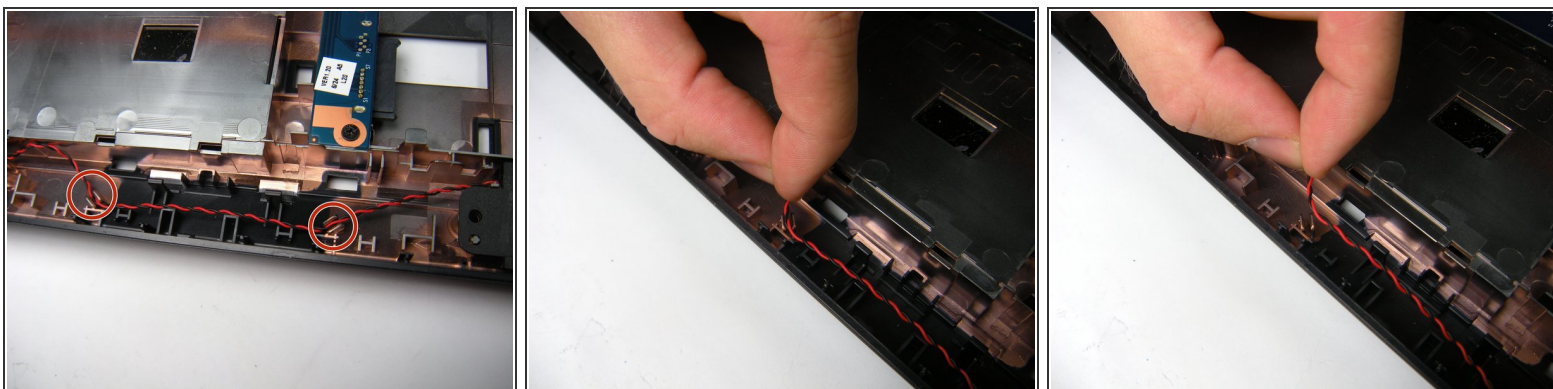
- Use the plastic opening tool to pry out the front panel around the entire computer.

Step 25



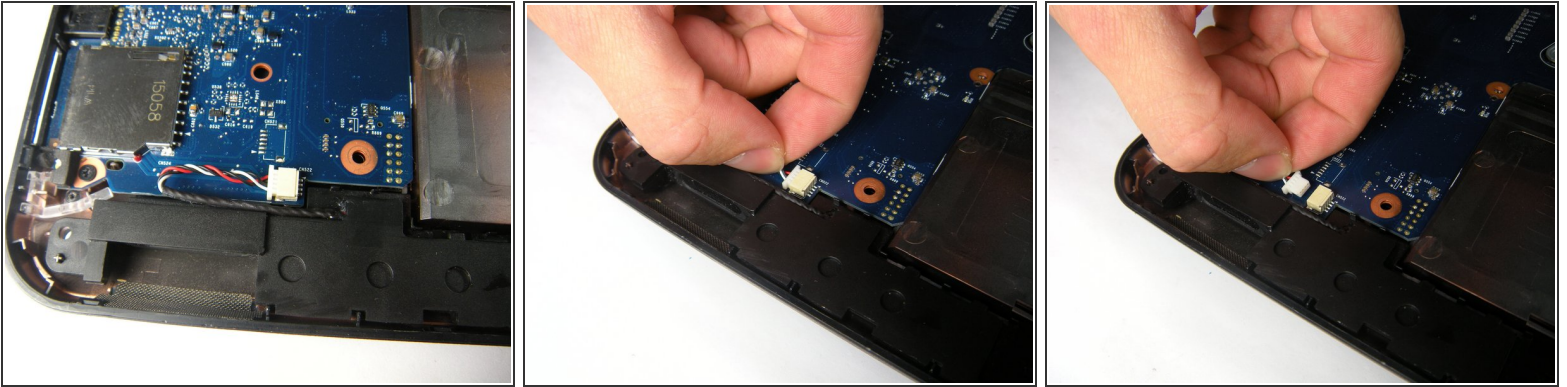
- Gently lift the front panel away from the computer.

Step 26



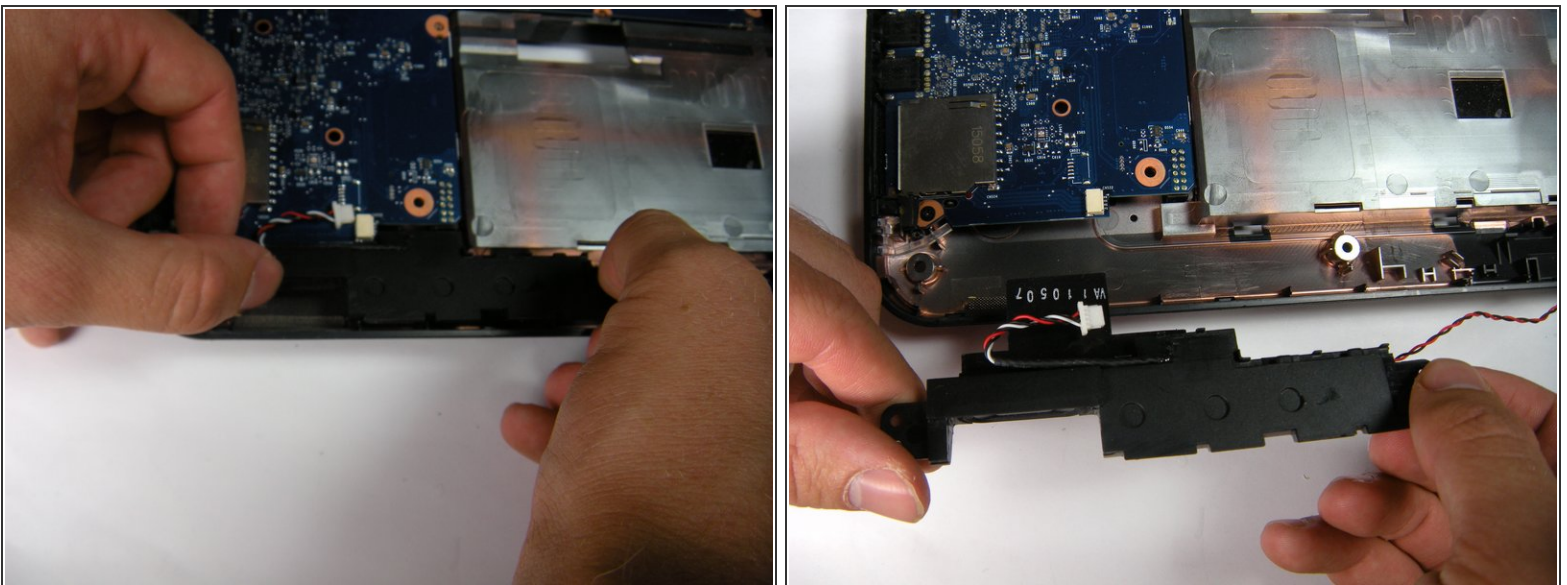
- Locate the red and black speaker cables connecting the speakers and detach them from the two holders.

Step 27



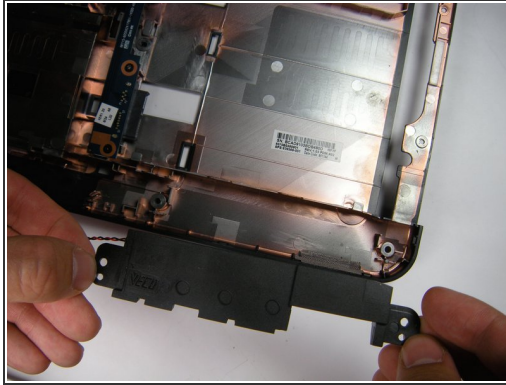
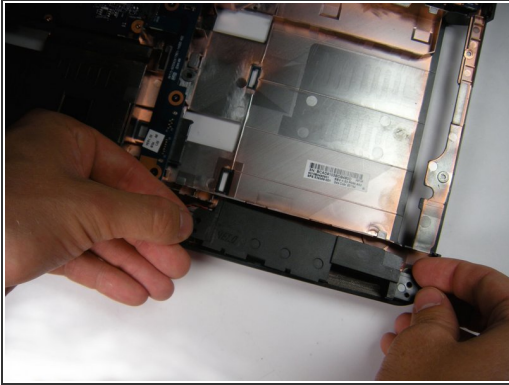
- Pull the speaker cables out of their connectors.

Step 28



- Slide the left speaker out from under the blue motherboard.

Step 29



- Lift the right speaker directly up and remove it from the computer.

To reassemble your device, follow these instructions in reverse order.