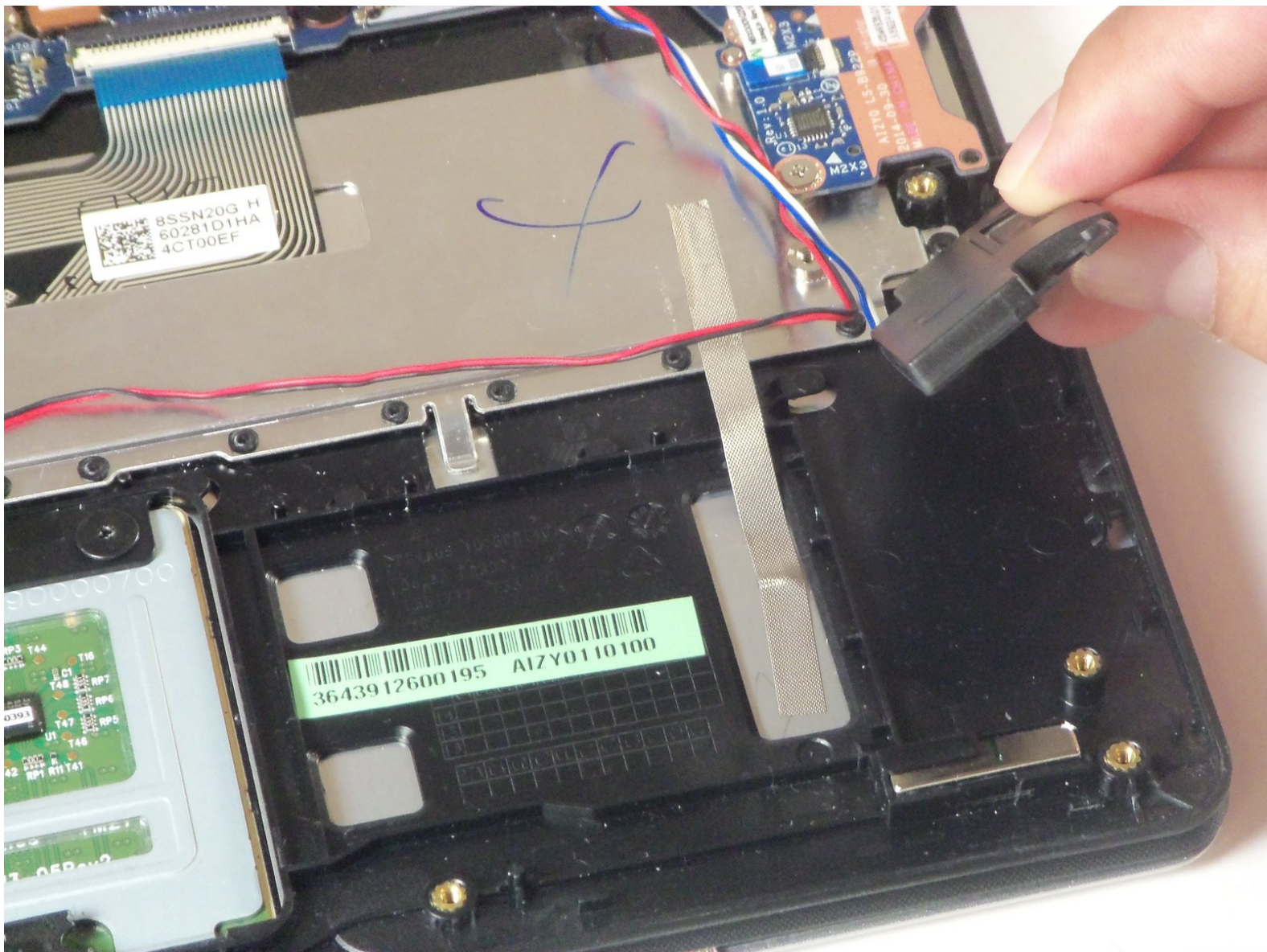




# Lenovo Yoga 3 11 Speaker Replacement

In this guide, you will learn how to remove and replace the speaker for the Lenovo Yoga 3 11 Laptop.

Written By: Slade Fernandes



## INTRODUCTION

If you are experiencing low to no sound coming from the speaker even when the volume is turned all the way up, then you have come to the right place as your speaker may need to be replaced. This guide will help you achieve the removal and replacement of your speaker.



### TOOLS:

- [Tweezers](#) (1)
  - [Phillips #00 Screwdriver](#) (1)
  - [T5 Torx Screwdriver](#) (1)
  - [Phillips #0 Screwdriver](#) (1)
-

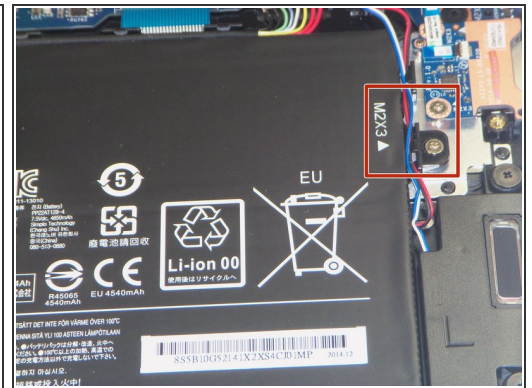


## Step 1 — Lower Case



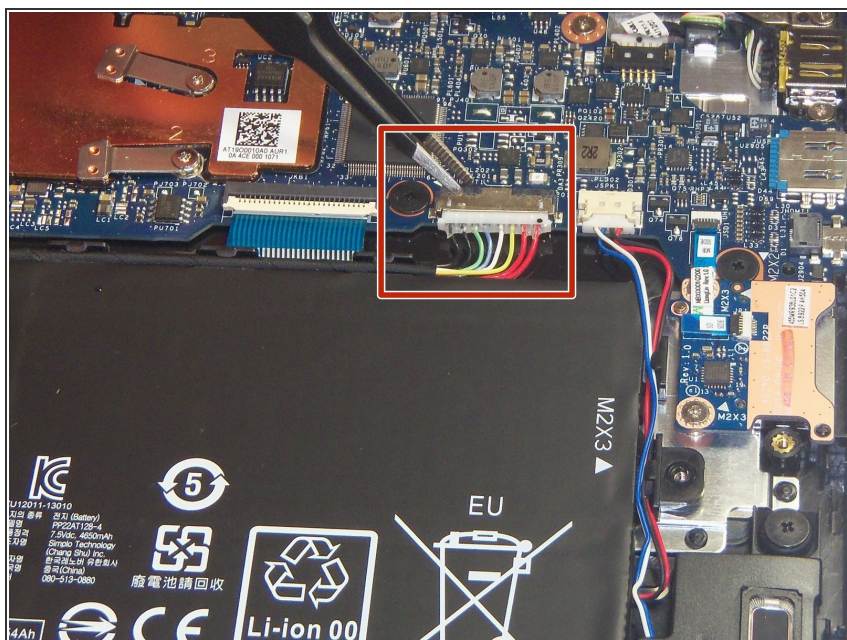
- Remove the eleven 6 mm T5 Torx screws securing the lower case.
- Gently lift the lower case up and away from the device.

## Step 2 — Battery



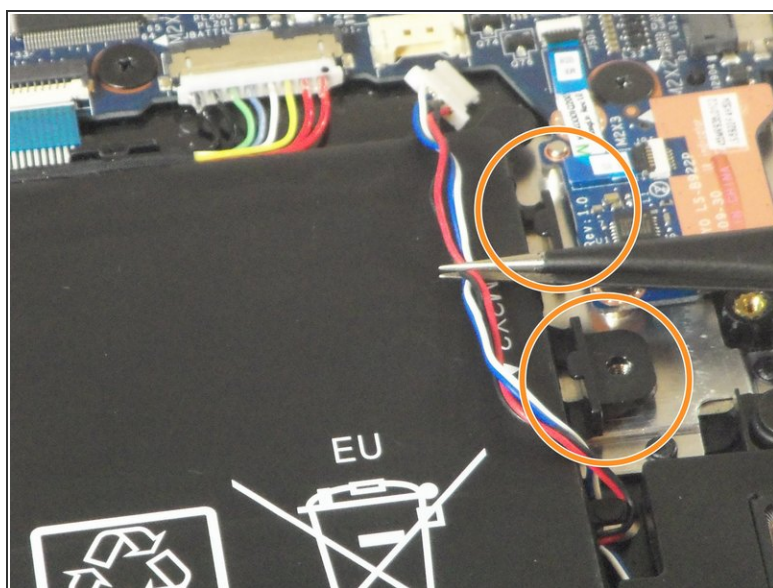
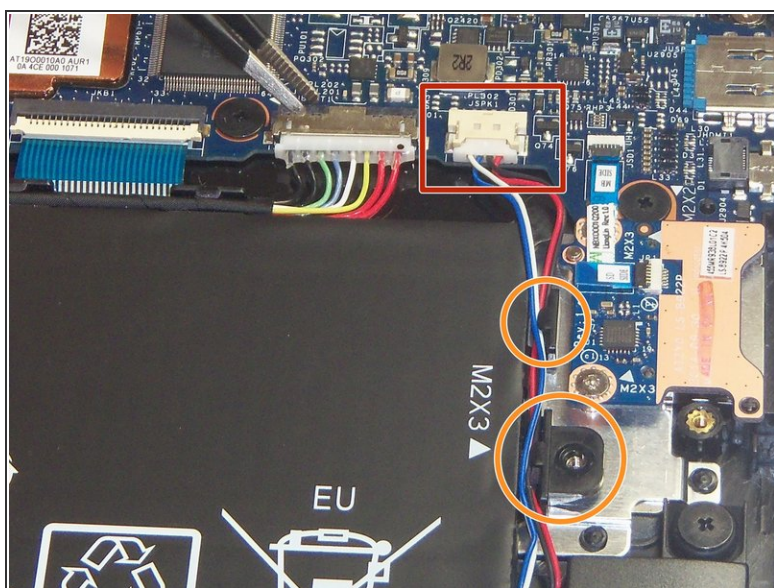
- Remove the two 3 mm Phillips #00 screws securing the battery.
- ⓘ There are arrows on the battery indicating the location of the screws.

## Step 3



- Use a pair of tweezers to gently disconnect the battery connector.

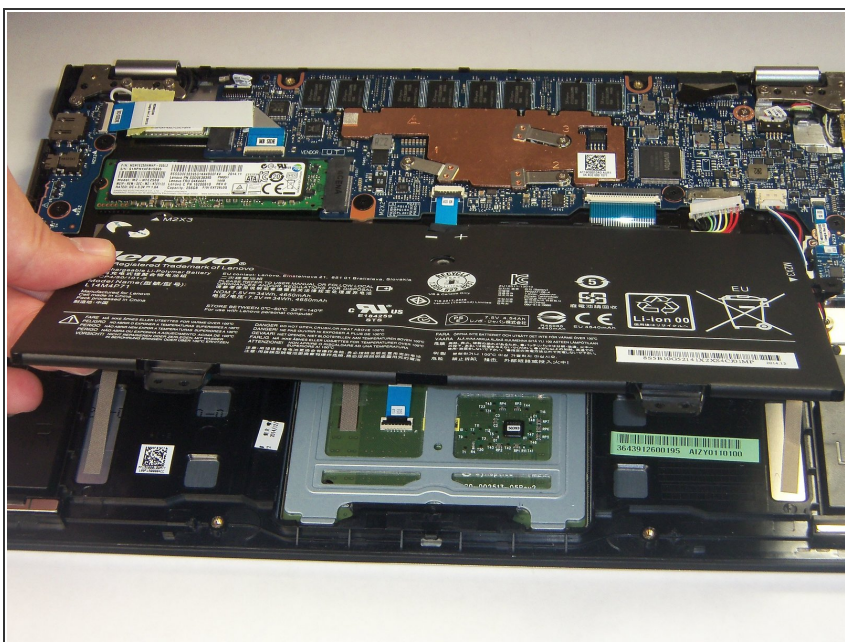
## Step 4



- Use a pair of tweezers to gently disconnect the speaker cable.
- Remove the wires from underneath the battery tabs using the tweezers.

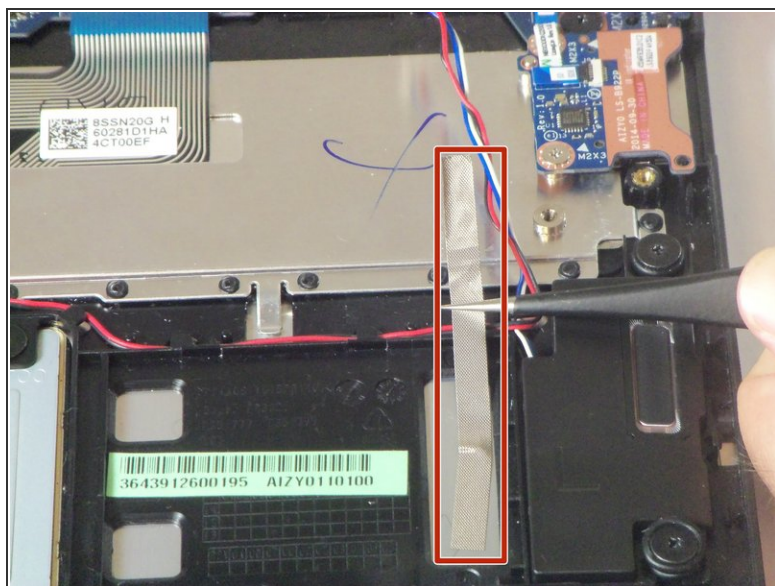
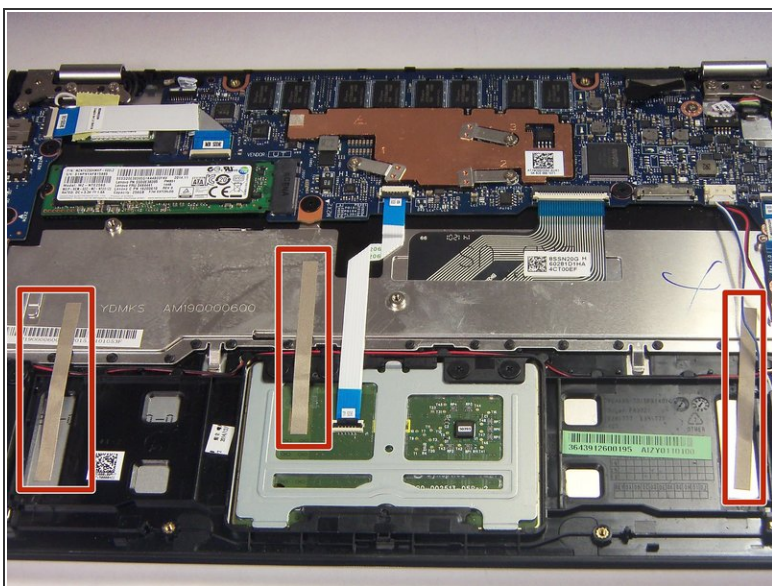


## Step 5



- Carefully remove the battery from the device.

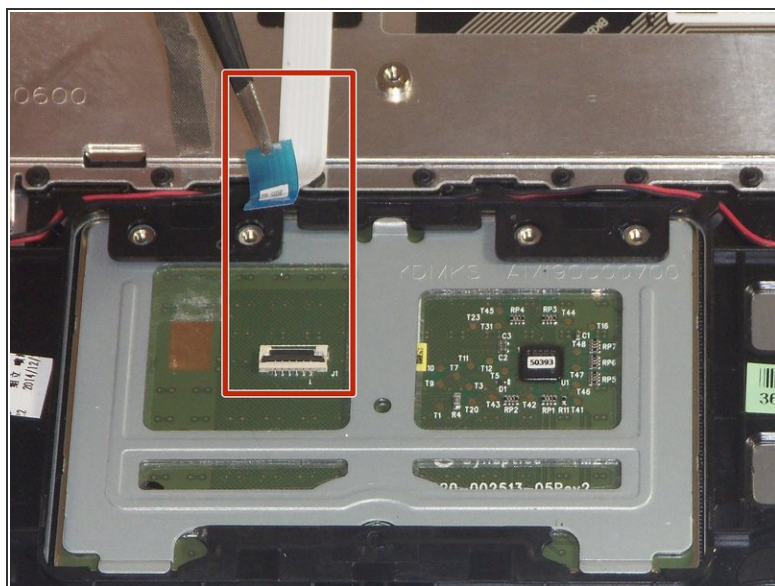
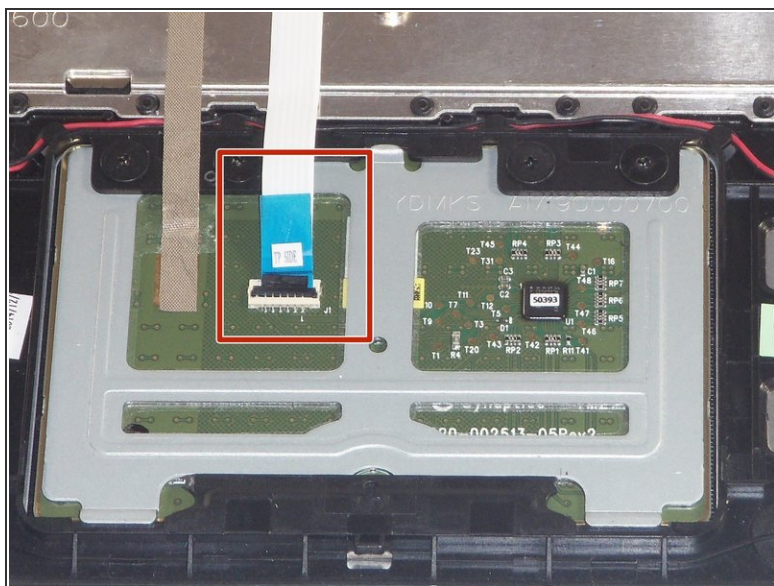
## Step 6 — Speaker



- Use a pair of tweezers to peel up one side of each of the 3 pieces of tape that cover the speaker wires.

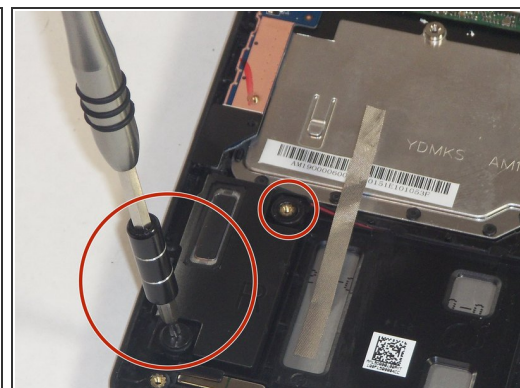
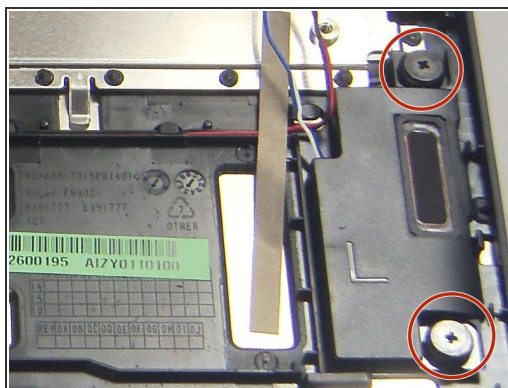
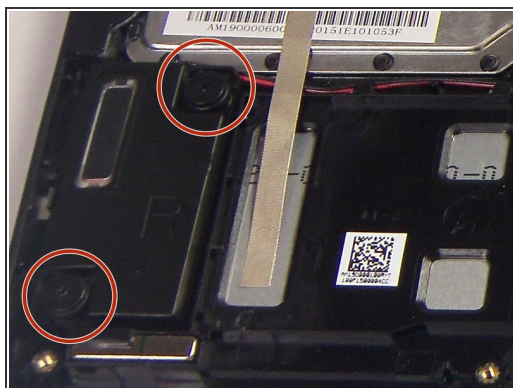


## Step 7



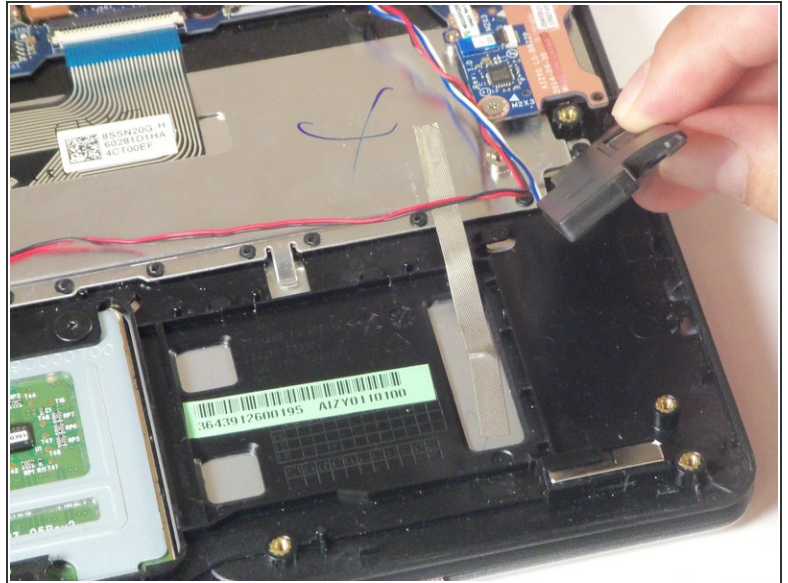
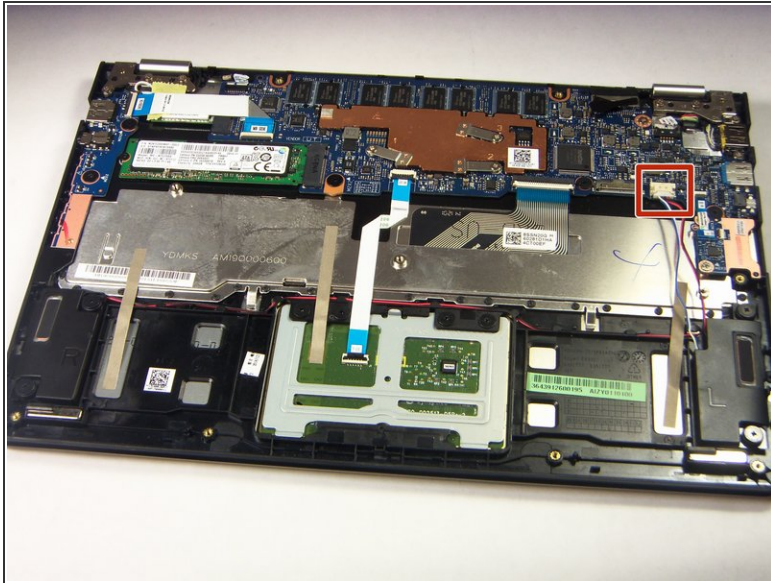
- Use a pair of tweezers to disconnect the [ZIF connector](#) securing the trackpad ribbon cable. Gently lift the black tab up, and the cable should come free.

## Step 8



- Remove the two 2 mm Phillips #0 screws securing the left speaker.
- Remove the two 2 mm Phillips #0 screws securing the right speaker.

## Step 9



- Use a pair of tweezers to disconnect the speaker connector.
- Gently lift the speakers free of the device.

To reassemble your device, follow these instructions in reverse order.