



Philips Norelco BeardTrimmer 3100 Zoom

Lock Precision Notch Replacement

Replacing the zoom lock precision notch of the zoom lock ring

Written By: ilan



INTRODUCTION

If the beard comb does not move, there may be a problem with the inside of the zoom lock ring, and the zoom lock precision notch may need to be replaced. Follow this guide to replace the zoom lock precision notch.



TOOLS:

- [Metal Spudger](#) (1)
-

Step 1 — Front and Back Panels



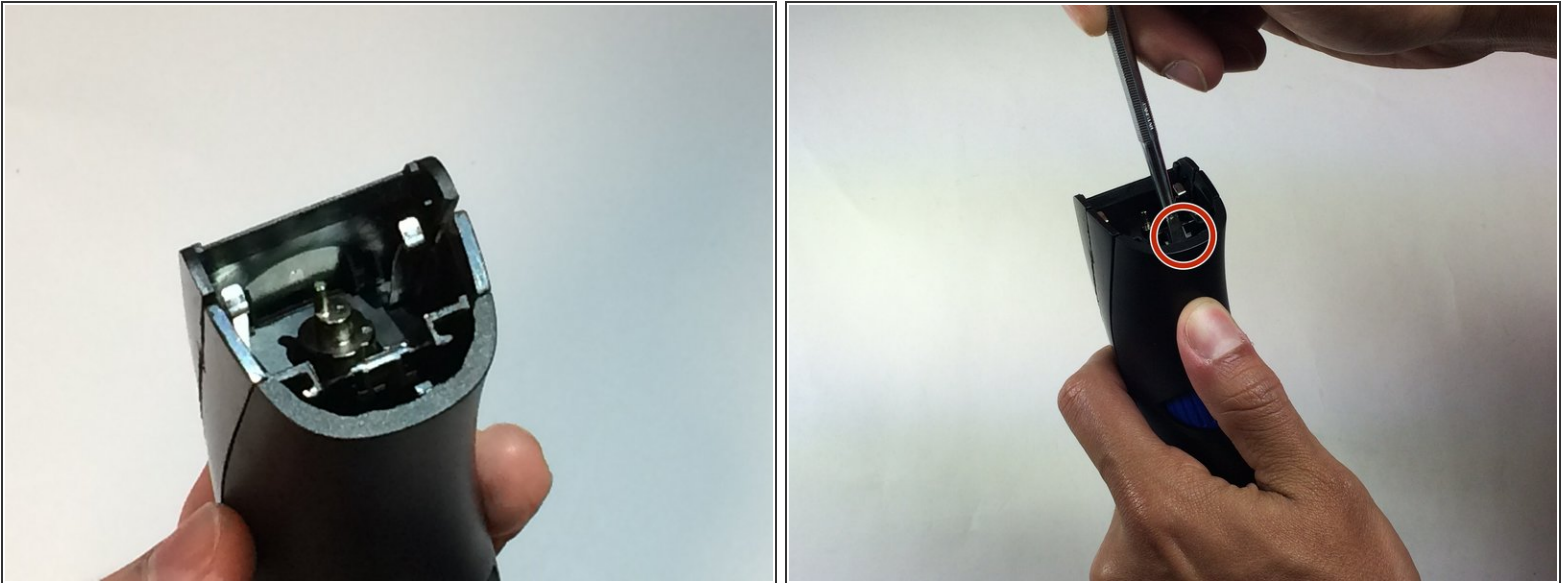
- Remove the comb from the top of the trimmer.

Step 2



- Place your thumb underneath the blade and push upward to remove it.

Step 3



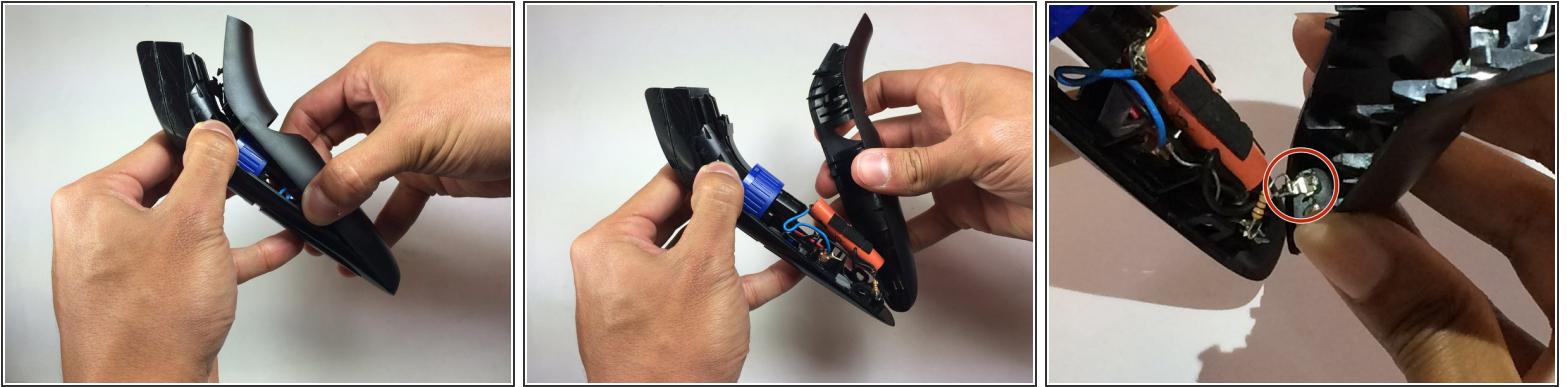
- Hold trimmer towards you as shown in the diagram.
- Insert your prying tool/metal spudger into the marked area.

Step 4



- Apply gentle pressure and begin prying open the back panel.
- Separate the panel one notch at a time. Listen carefully as you're prying the panel apart and notice each individual notch release.

Step 5



- Pull the trimmer apart using your hands once the panel is at least halfway apart.
- Pull the wires attached to the battery off of the power connectors before completely removing the back panel.

Step 6



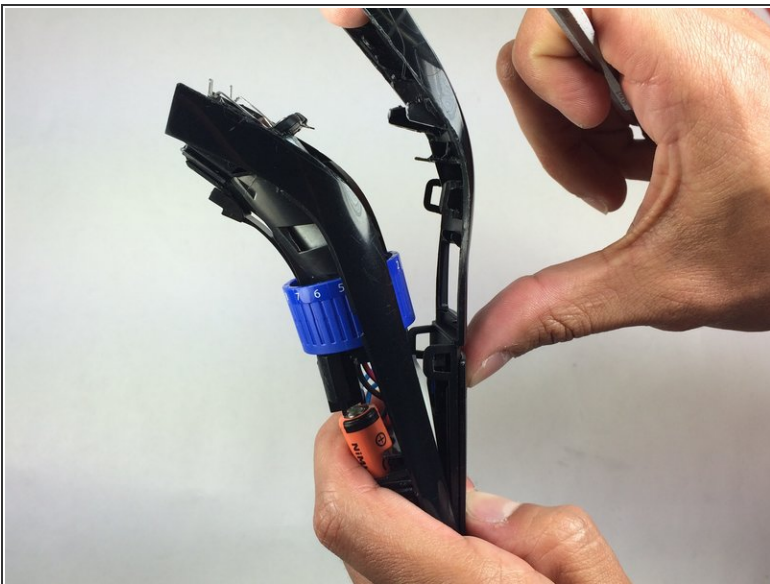
- Hold the trimmer towards you.
- Place the metal spudger tool in the marked area.

Step 7



- Apply gentle pressure and begin prying the front panel.
- Separate the front panel one notch at a time.

Step 8



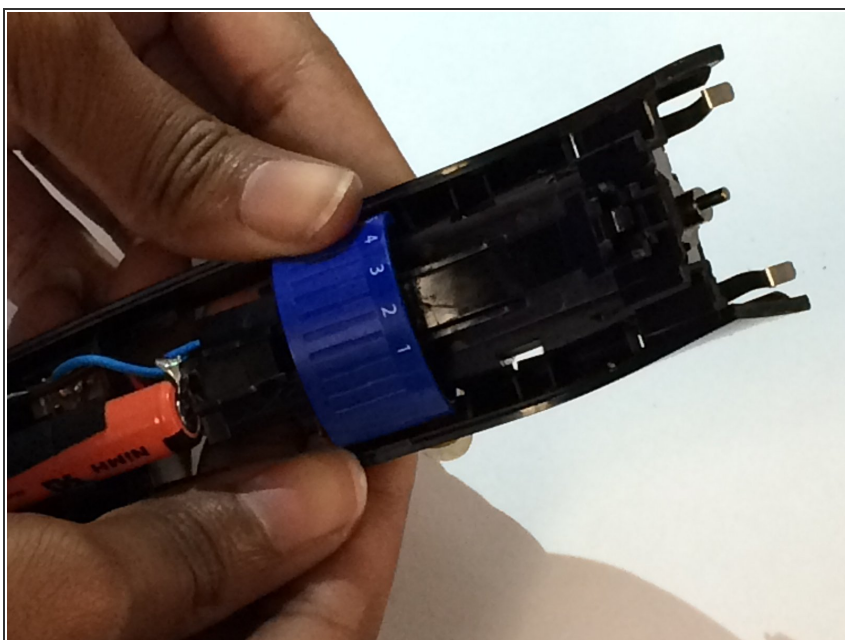
- Pull the trimmer apart using your hands once the panel is at least halfway apart.

Step 9 — Zoom Lock Precision Notch



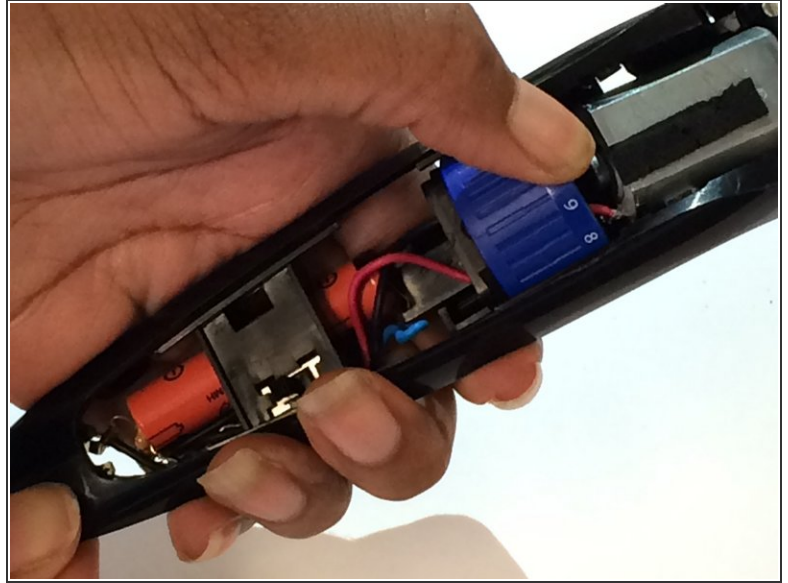
- Locate the zoom lock precision notch in the back panel of the Beardtrimmer

Step 10



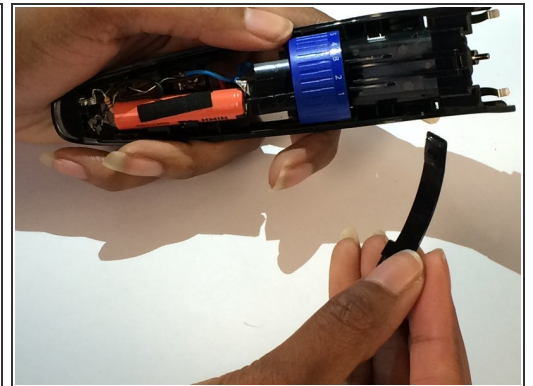
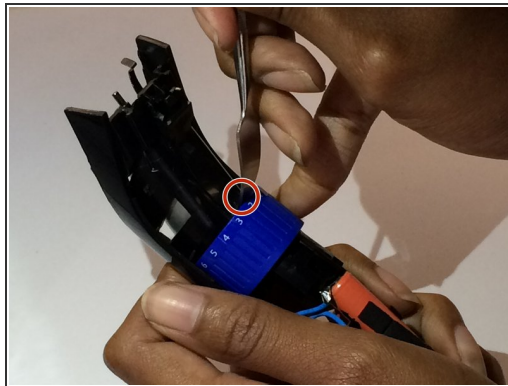
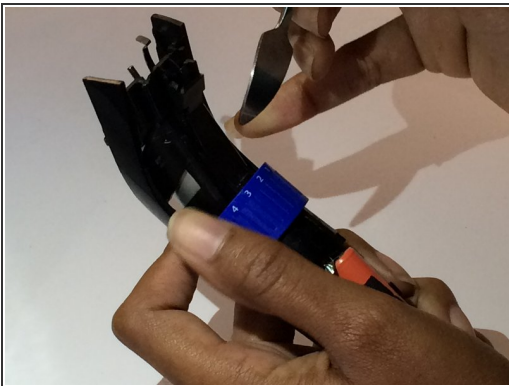
- Set the zoom lock wheel to the lowest setting

Step 11



- Rotate the trimmer so that the motor is facing you.
- Now gently push down the zoom lock wheel until the white button is not showing.

Step 12



- Rotate the beardtrimmer again so that the battery is facing you.
- With the help of the metal spudger, apply gentle pressure on top of the wheel to remove the zoom lock precision notch .

To reassemble your device, follow these instructions in reverse order.