



# Sharp Aquos LC13B2UA Front Case Replacement

Outline what you are going to teach someone how...

Written By: Robert Hobson



---

## INTRODUCTION

Outline what you are going to teach someone how to do.

---

### TOOLS:

- [Phillips #2 Screwdriver](#) (1)
-

## Step 1 — Stand



- Place the TV face down on a flat smooth surface as to not scratch the screen.
- Using a Phillips #2 screwdriver remove the four 8mm screws attaching the stand to the TV.

## Step 2



- Lift the stand off the television.

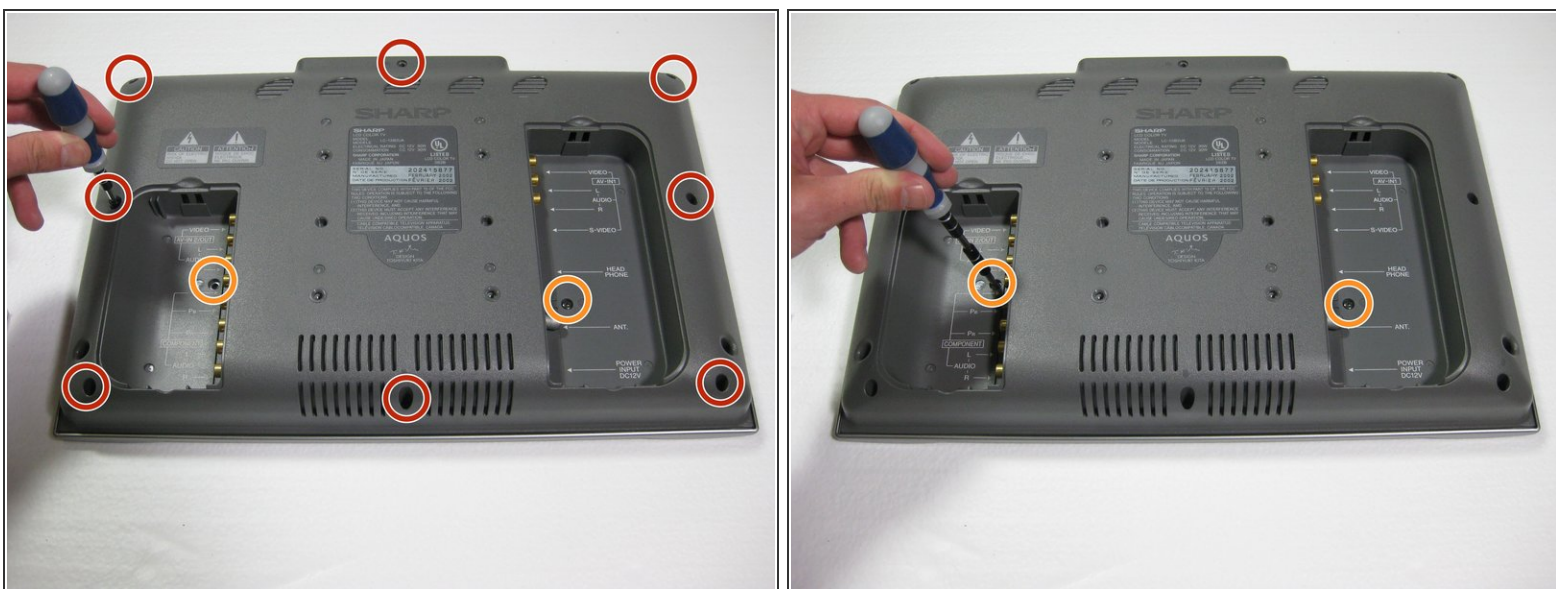


## Step 3 — Back Case



- Remove the two back panels by prying them out with your hands.

## Step 4



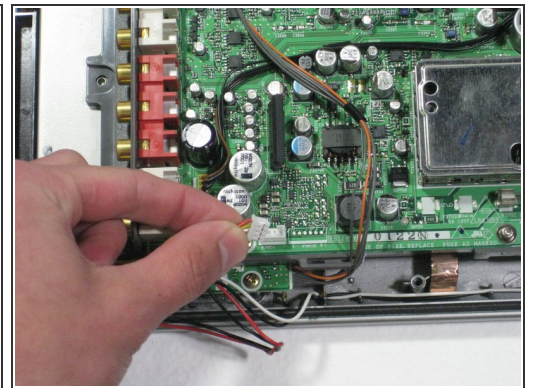
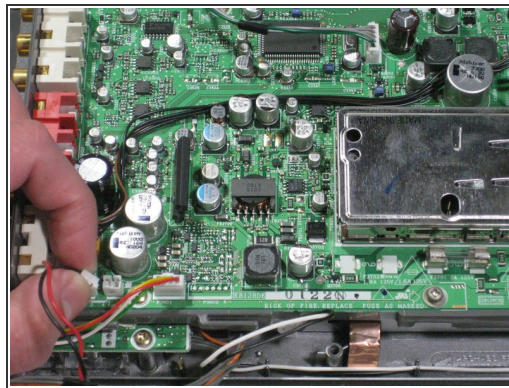
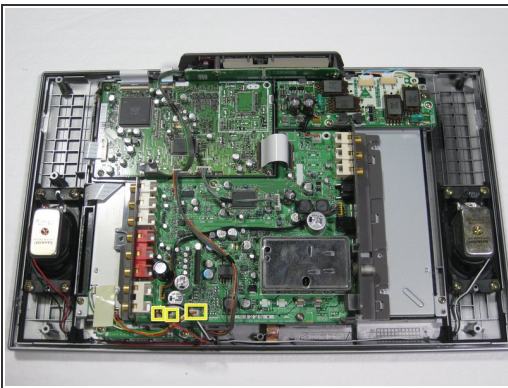
- Using a Phillips #2 screwdriver, remove the eight 6mm Phillips screws located around the edge.
- Using a Phillips #2 screwdriver, remove the two 6mm Phillips screws located near the inputs.

## Step 5



- Using your hands, gently lift and remove the back case of the television.

## Step 6 — Motherboard

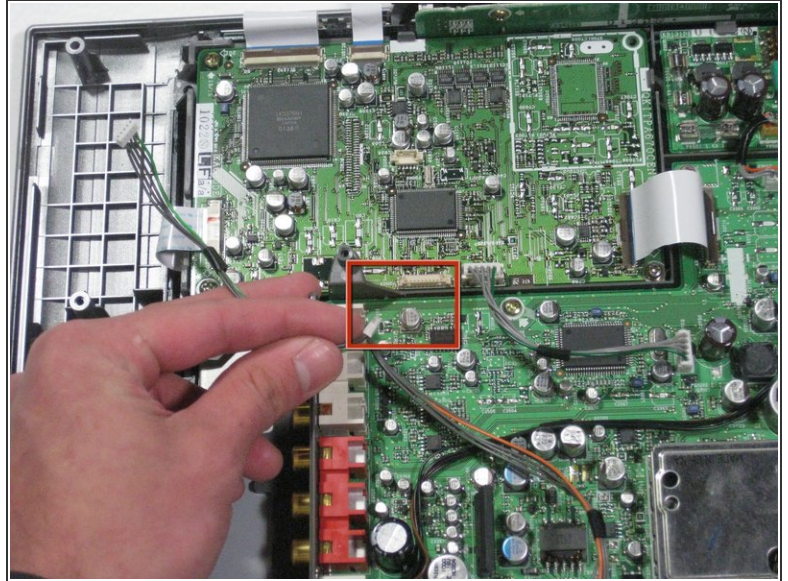
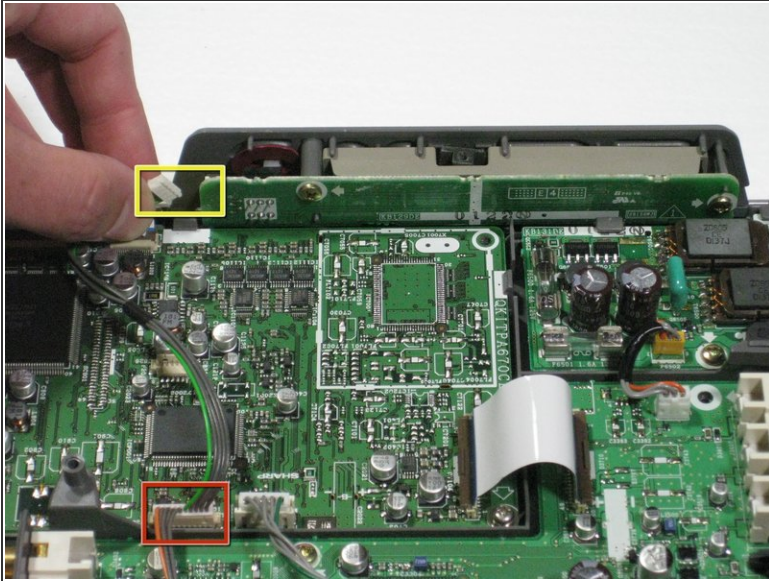


- Remove the two speaker cables and the connector from the circuit board by pinching the plastic connectors and firmly pulling up.

**⚠ Pull on the plastic part of the connector, even though it may seem easiest to pull on the wires.**

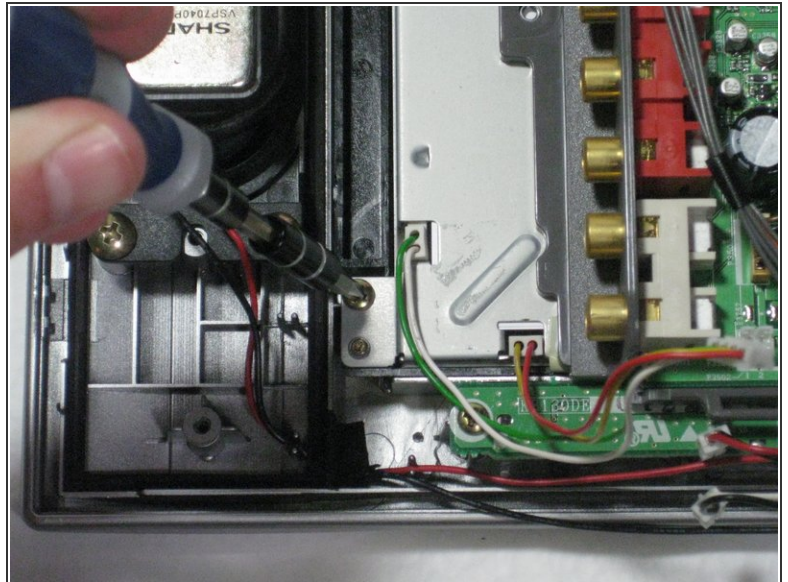
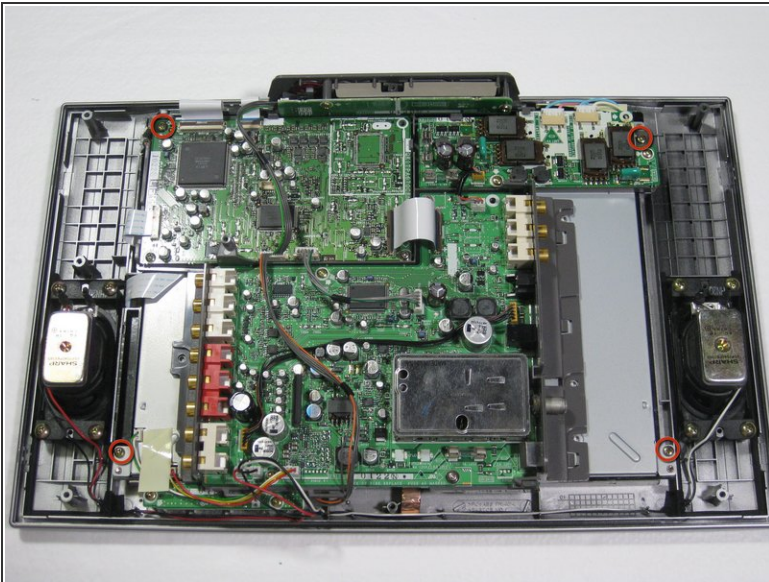


## Step 7



- Remove the green and gray power connector from the side of the buttons panel at the top of the television.
- Remove the green/gray to orange/gray connector from the center of the circuit board.

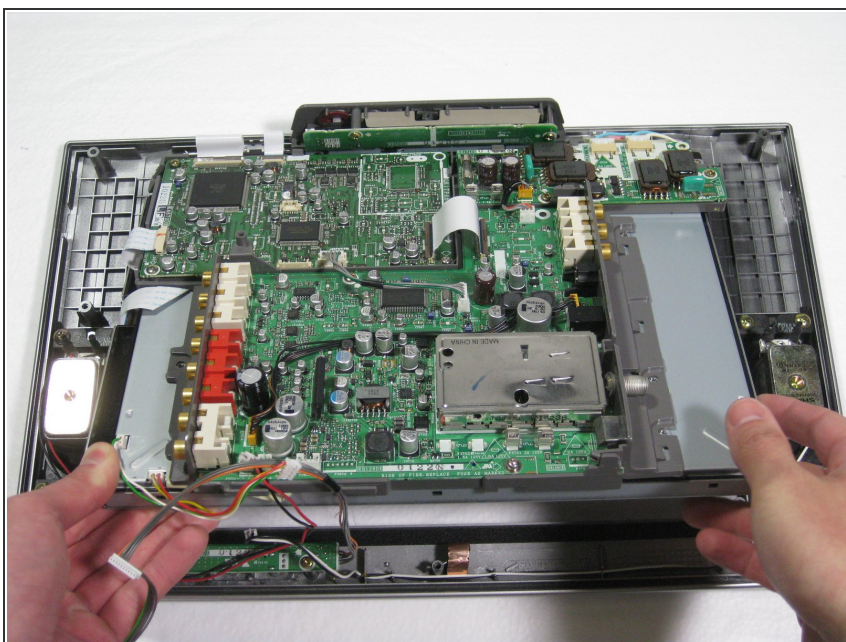
## Step 8



- Remove the four 5mm Phillips screws attaching the LCD and circuit board to the front case.

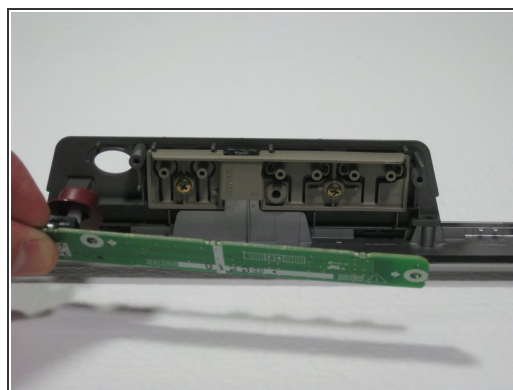
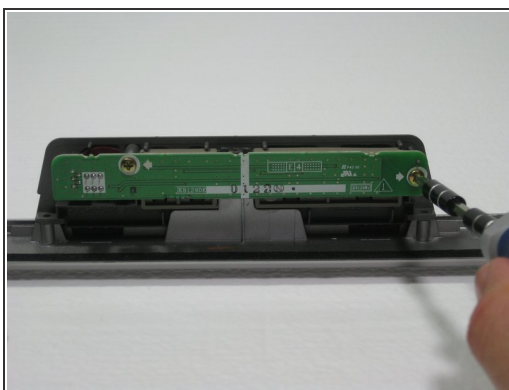


## Step 9



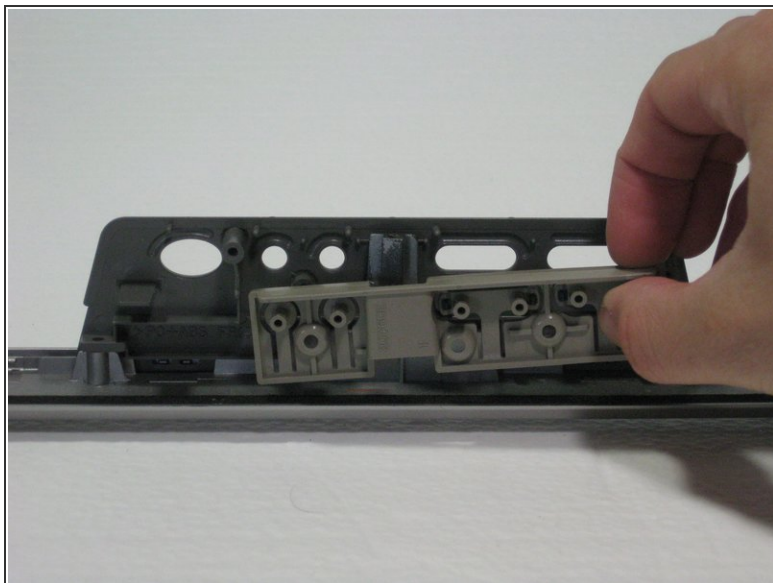
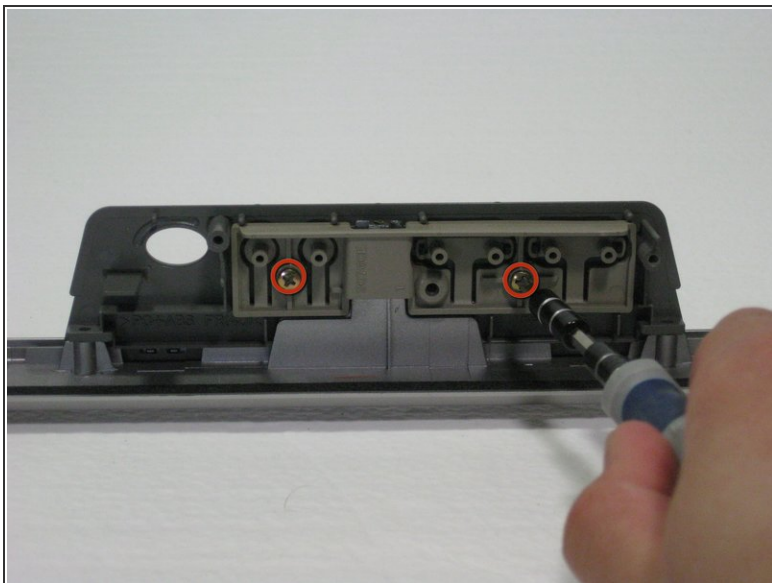
- Lift the circuit board/LCD block from the case by lifting the near side of the circuit board and sliding it under the button frame.

## Step 10 — Power Button



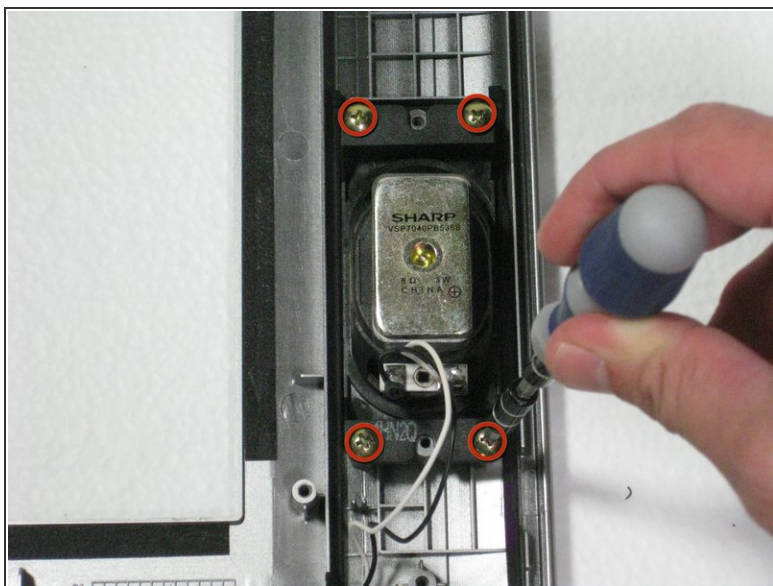
- Remove the two 6mm Phillips screws.
- Pull the board toward you, giving you access to the power button.

## Step 11 — Top Buttons



- Unscrew the two 4mm Phillips screws.
- Lift the buttons off the front case.

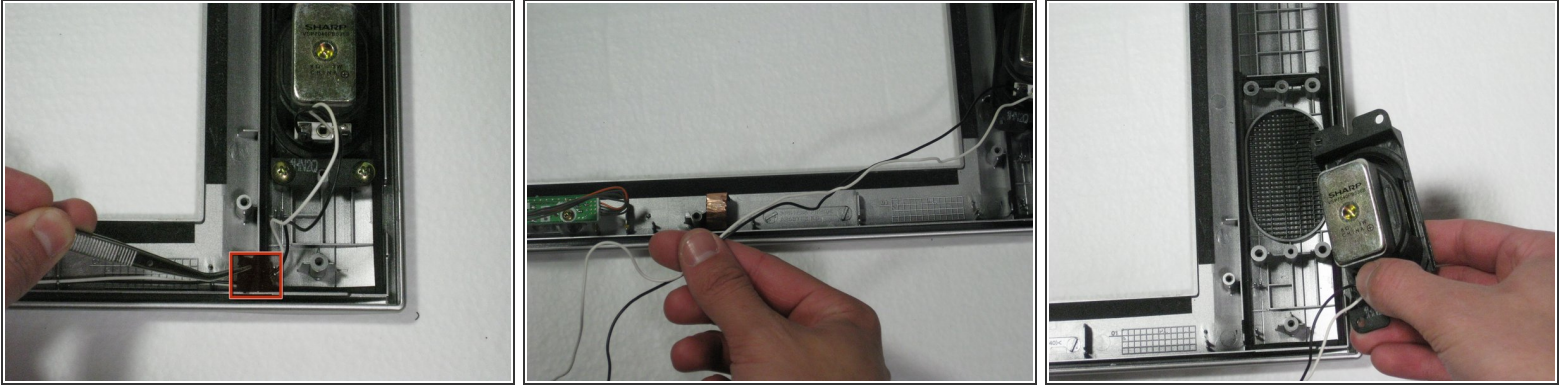
## Step 12 — Front Case



- Remove the eight 10mm screws connecting the two speakers to the front case.

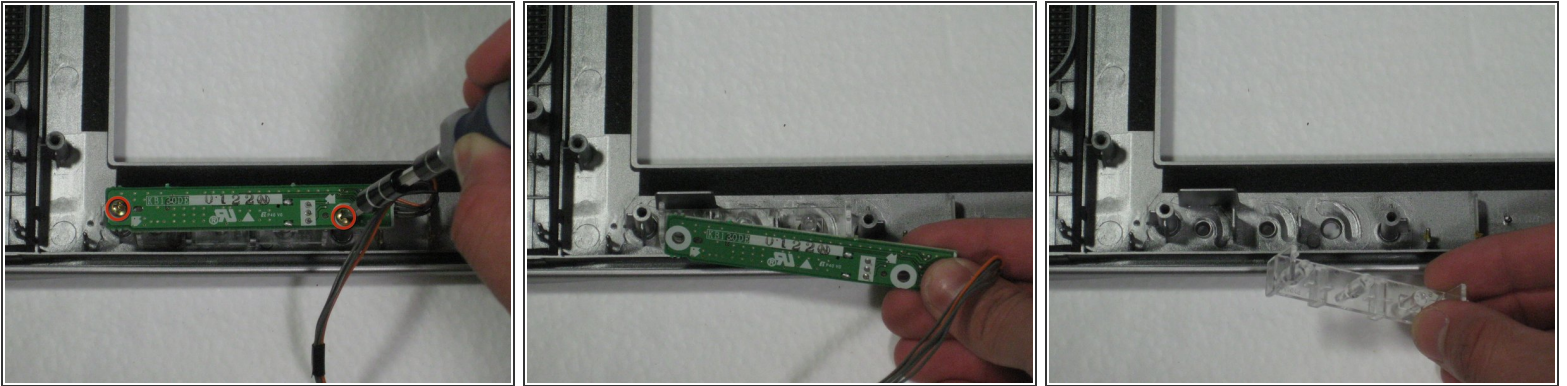


## Step 13



- Remove the two black tape strips securing the audio cables to the case.
- Lift the audio cable from the plastic prongs securing it to the front case
- The speakers can now be removed.

## Step 14



- To remove the LED circuit at the base of the front casing, unscrew the two 5mm Phillips screws.
- Lift the circuit to remove the plastic LED casing.

To reassemble your device, follow these instructions in reverse order.