



Philips Norelco BeardTrimmer 3100 Power Switch Replacement

This guide will give a thorough explanation on how to remove and replace the power switch from the beard trimmer.

Written By: Tamara Titus





TOOLS:

- [Metal Spudger](#) (1)
-

Step 1 — Front and Back Panels



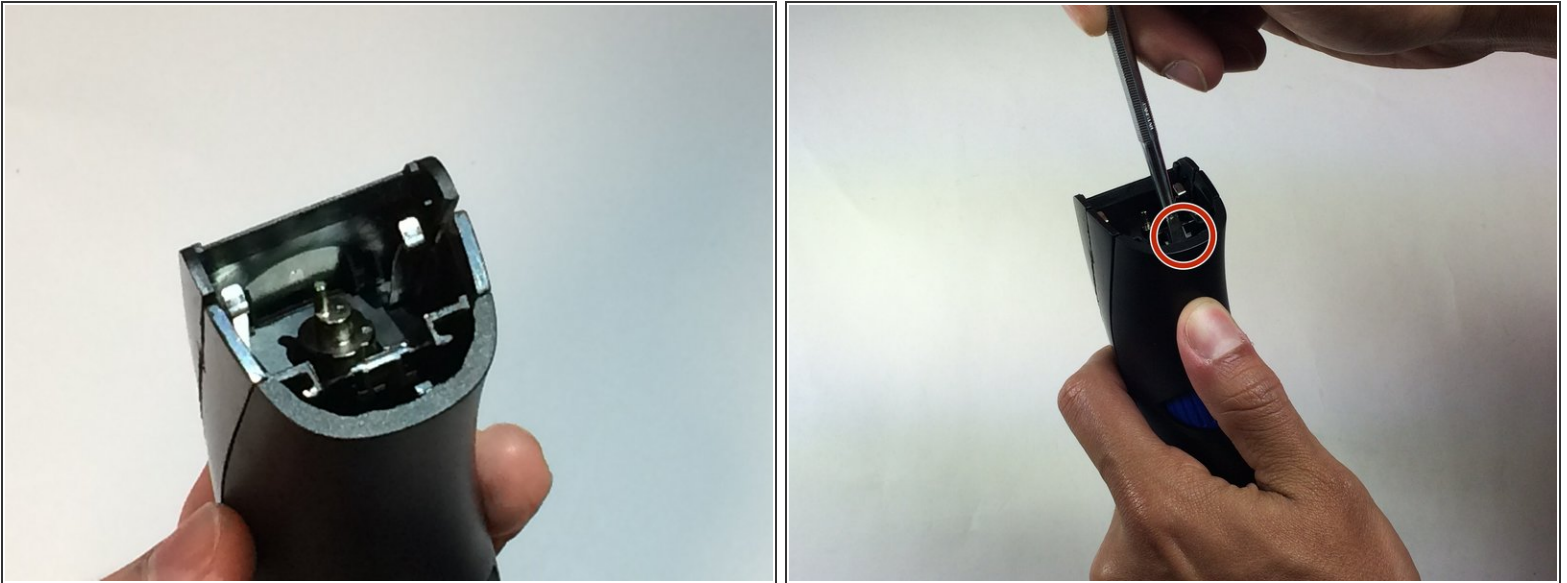
- Remove the comb from the top of the trimmer.

Step 2



- Place your thumb underneath the blade and push upward to remove it.

Step 3



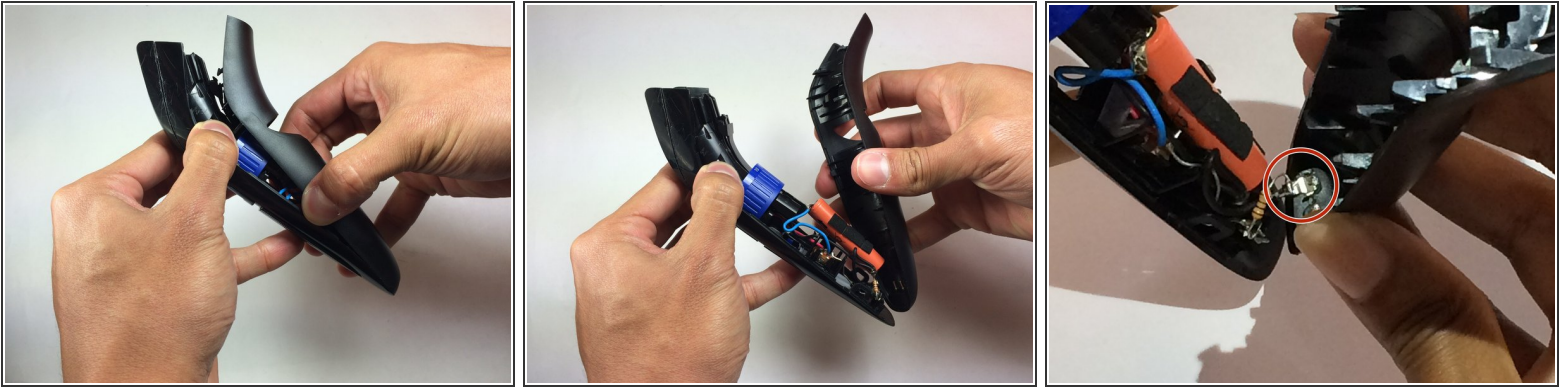
- Hold trimmer towards you as shown in the diagram.
- Insert your prying tool/metal spudger into the marked area.

Step 4



- Apply gentle pressure and begin prying open the back panel.
- Separate the panel one notch at a time. Listen carefully as you're prying the panel apart and notice each individual notch release.

Step 5



- Pull the trimmer apart using your hands once the panel is at least halfway apart.
- Pull the wires attached to the battery off of the power connectors before completely removing the back panel.

Step 6



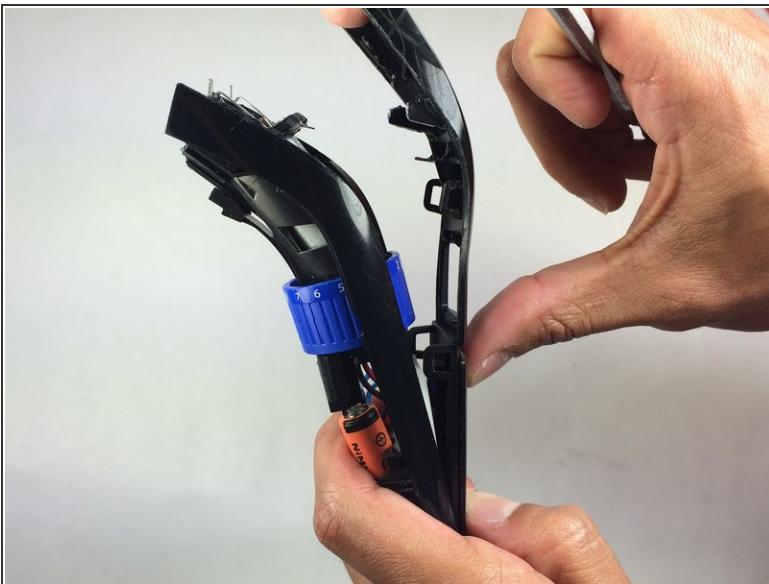
- Hold the trimmer towards you.
- Place the metal spudger tool in the marked area.

Step 7



- Apply gentle pressure and begin prying the front panel.
- Separate the front panel one notch at a time.

Step 8



- Pull the trimmer apart using your hands once the panel is at least halfway apart.

Step 9 — Power Switch



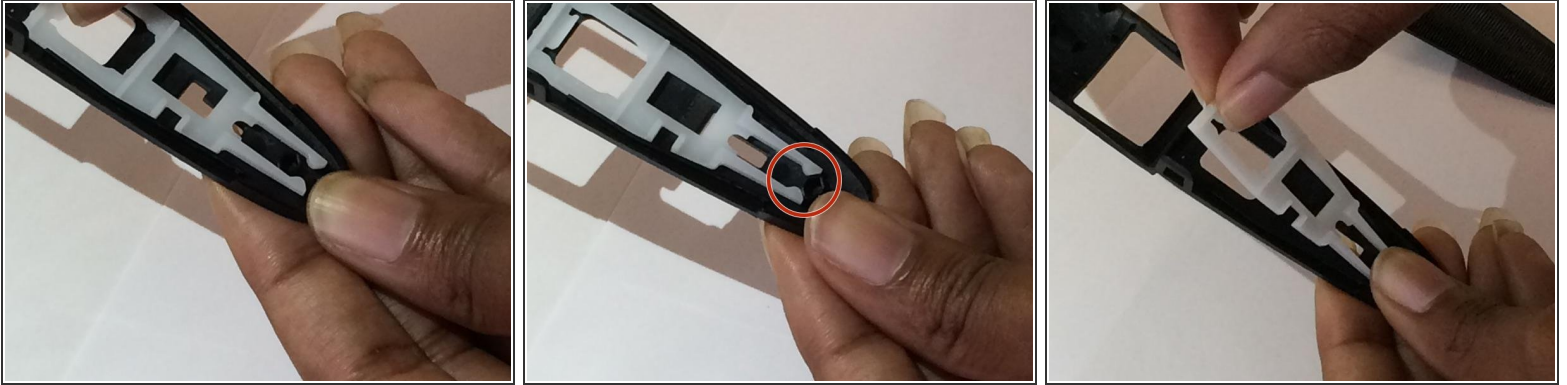
- Remove the front panel completely from the rest of the beard trimmer.

Step 10



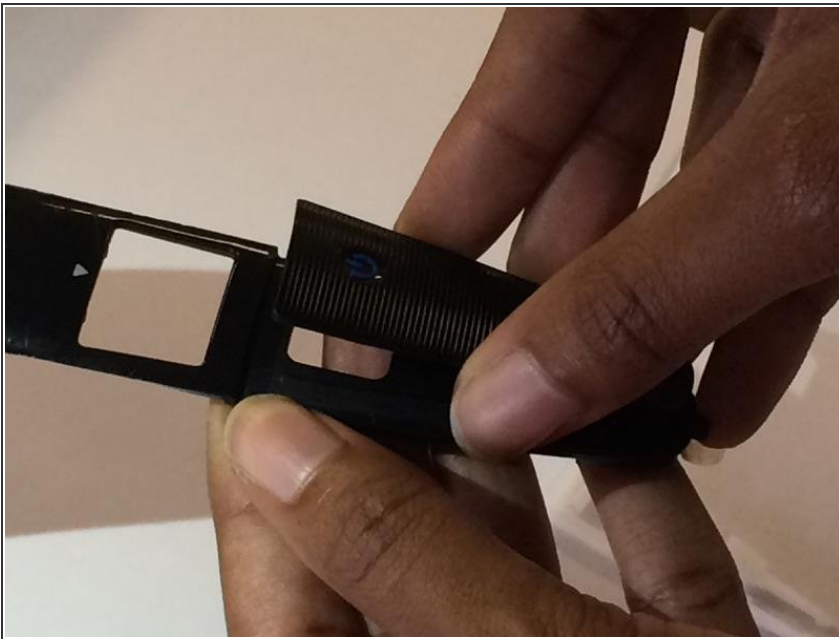
- Rotate the front panel so that the power switch is facing away from you.

Step 11



- Push the white plastic frame upward to remove it from the notch.
- Pull the white plastic frame off the front panel of the beard trimmer.

Step 12



- Remove the power switch from the front panel once the white plastic frame is removed.

To reassemble your device, follow these instructions in reverse order.