



# Philips Norelco BeardTrimmer 3100 Front and Back Panels Replacement

Prerequisite Only

Written By: Darren Chu



---

## INTRODUCTION

In order to access the internal components of the beardtrimmer, the front and back panels must be removed. This guide will instruct you on the process.



### TOOLS:

- [Metal Spudger](#) (1)
-

## Step 1 — Front and Back Panels



- Remove the comb from the top of the trimmer.

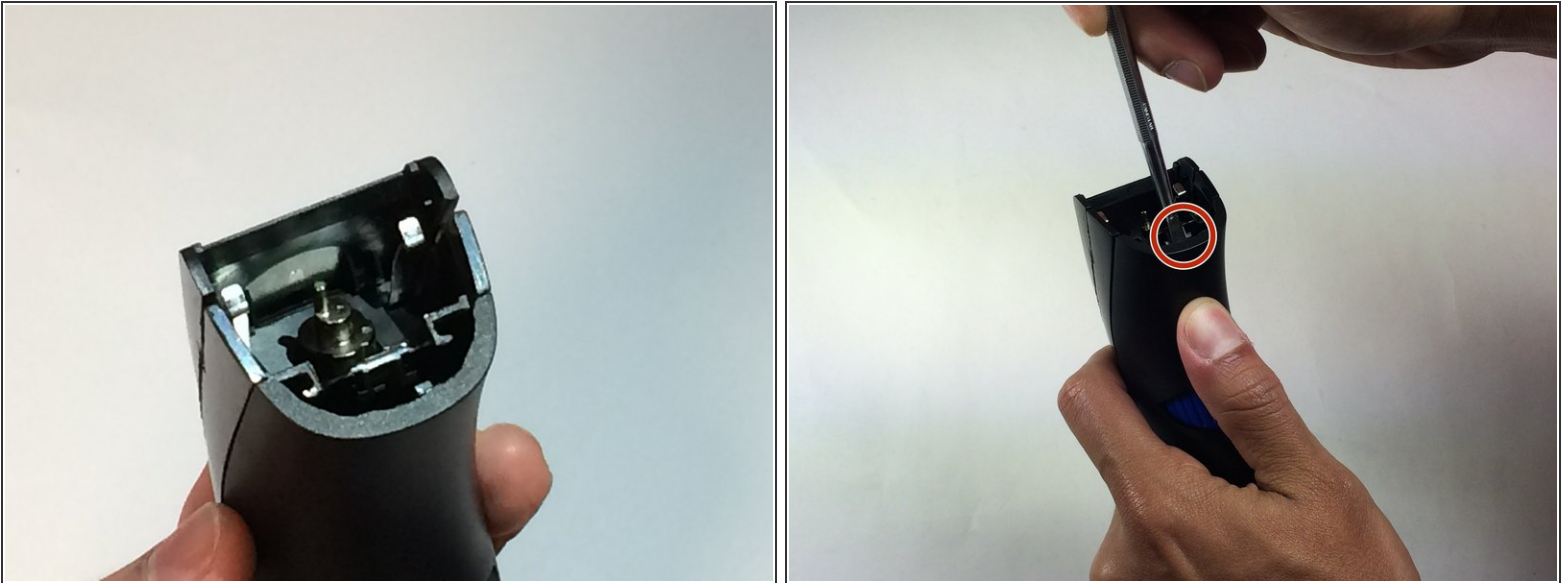
## Step 2



- Place your thumb underneath the blade and push upward to remove it.



### Step 3



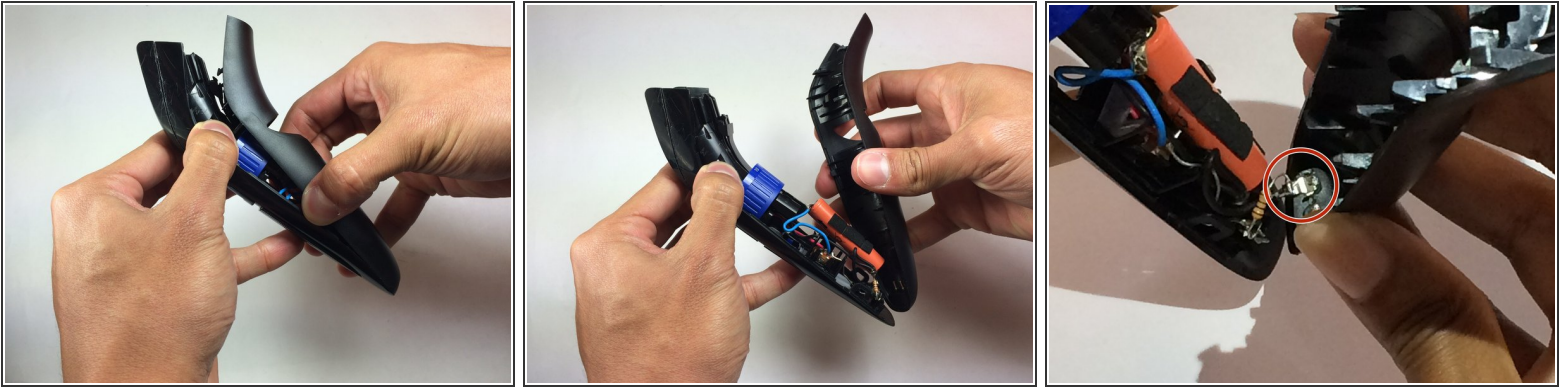
- Hold trimmer towards you as shown in the diagram.
- Insert your prying tool/metal spudger into the marked area.

### Step 4



- Apply gentle pressure and begin prying open the back panel.
- Separate the panel one notch at a time. Listen carefully as you're prying the panel apart and notice each individual notch release.

## Step 5



- Pull the trimmer apart using your hands once the panel is at least halfway apart.
- Pull the wires attached to the battery off of the power connectors before completely removing the back panel.

## Step 6



- Hold the trimmer towards you.
- Place the metal spudger tool in the marked area.

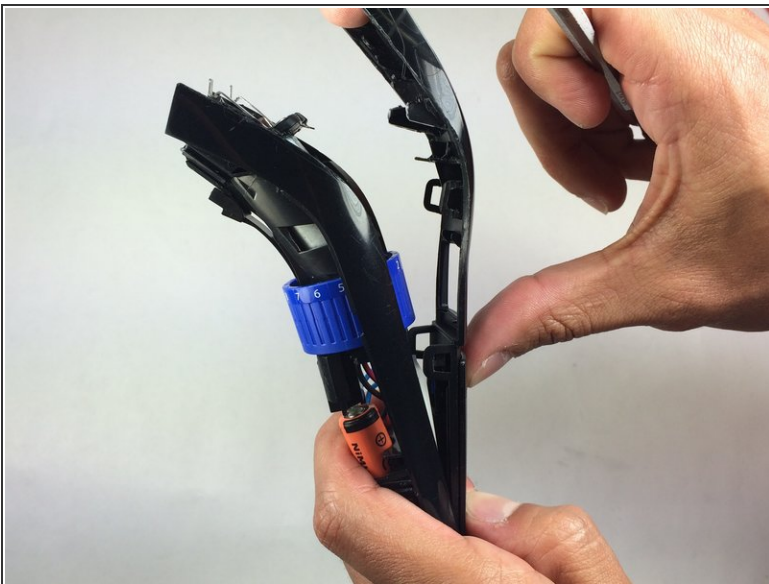


## Step 7



- Apply gentle pressure and begin prying the front panel.
- Separate the front panel one notch at a time.

## Step 8



- Pull the trimmer apart using your hands once the panel is at least halfway apart.

To reassemble your device, follow these instructions in reverse order.