



Repairing Cup Holder for 2008 328i BMW

This guide will show you how to fix your broken cup holder if it does not open.

Written By: Michael Tapia



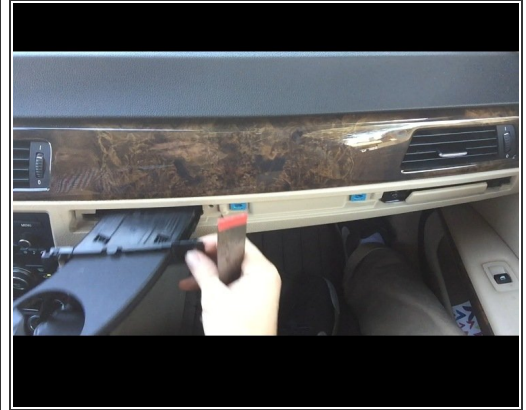
INTRODUCTION

If you have a cup holder but it wont open then this guide will take you through the steps you need to do to fix this problem.

TOOLS:

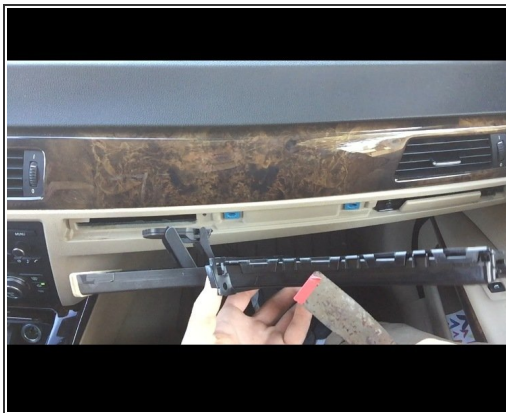
- [Phillips #1 Screwdriver](#) (1)
 - [Power Drill](#) (1)
 - [Puddy Knife](#) (1)
-

Step 1 — Repairing Cup Holder for 2008 328i BMW



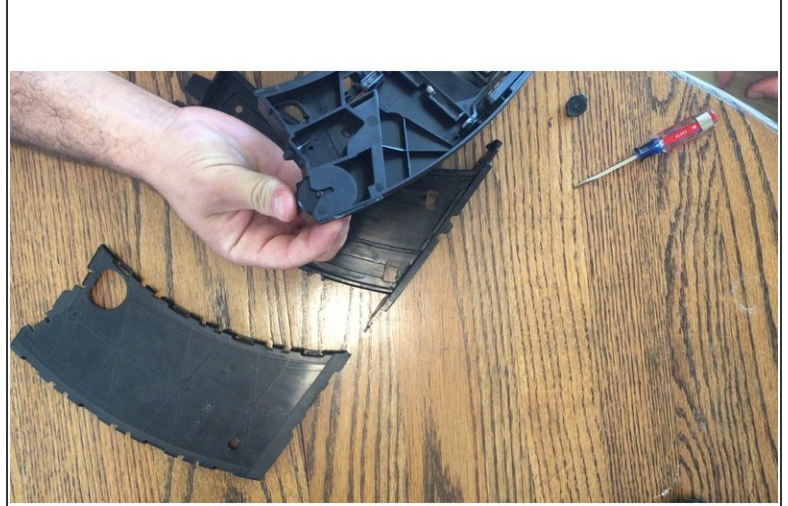
- Apply putty knife to edge of cover until it pops open
- Remove screws off of broken cup holder
- Take cup holder out

Step 2



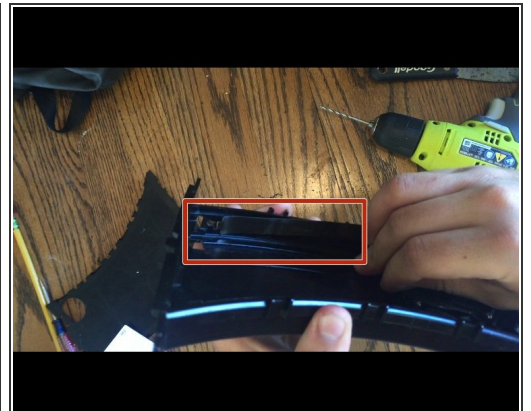
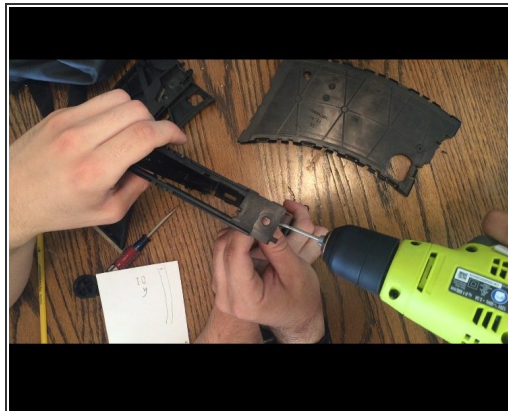
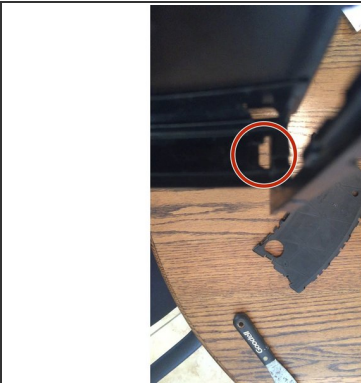
- Remove plastic cover on cup holder by pulling apart where the lips meet
- Locate spring in device

Step 3



- Fully take apart the cup holder to get to the inside of the cup holder
- Locate where spring is placed

Step 4



- Locate where the spring connects
- If hole is not broken then just apply spring into hole
- If the hole broke, like in this case here, then drill a hole the size of the spring around the same spot of the other hole



Caution: Be careful drilling the hole, the plastic is slippery when in contact with drill bit

This document was generated on 2020-11-16 03:43:41 PM (MST).

Step 5



- Test to make sure spring is properly working
- Reassemble the cup holder

Step 6



- Put cup holder back in place
- Screw in screws

Step 7



- Check to make sure cup holder works
- Start to put on cover by lining up holes

Step 8



- Press firmly on cover all around until it is fully on

Step 9



- Enjoy your fixed cup holder!

Follow these steps step by step to get your broken cup holder fixed.