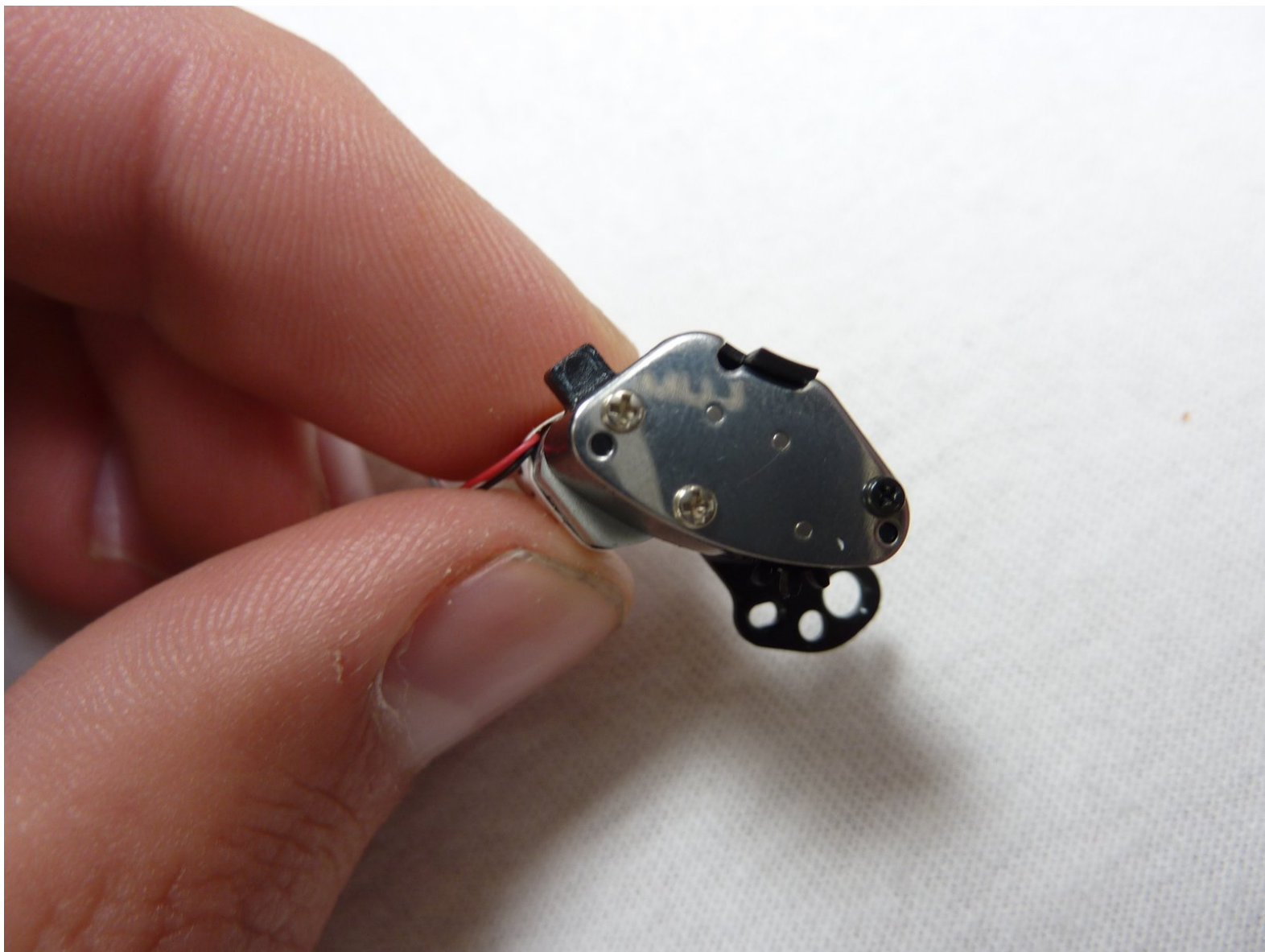




# Sony Cyber-shot DSC-P52 Shutter Motor Replacement

This guide explains how to replace the shutter motor.

Written By: Greg Hermansen



## INTRODUCTION

This guide explains how to remove and replace the shutter motor in the Sony Cybershot DSC-P52



### TOOLS:

- [Phillips #0 Screwdriver](#) (1)



### PARTS:

- [Replacement shutter motor](#) (1)

## Step 1 — Outer Case



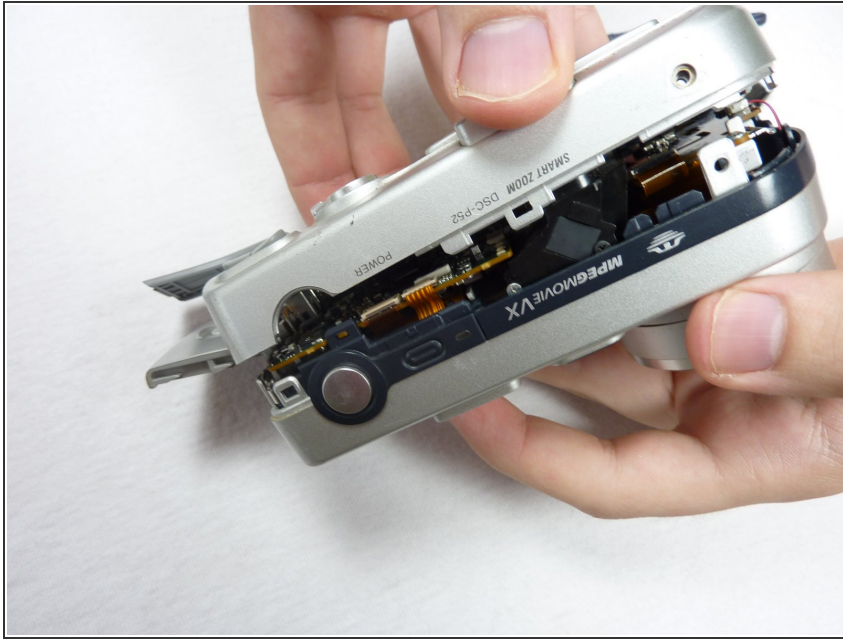
- Open the battery compartment and remove the batteries.
- Remove all of the visible screws on the outside of the case.
- ❗ There should be three of them that are all easily located.

## Step 2



- Open the memory card compartment.
- Remove the screw next to the memory card slot.

## Step 3



- Pull apart the front and back cover pieces carefully.
- ⓘ The front cover should come completely free with little effort.
- ⓘ The back cover will still be attached to the circuit board.

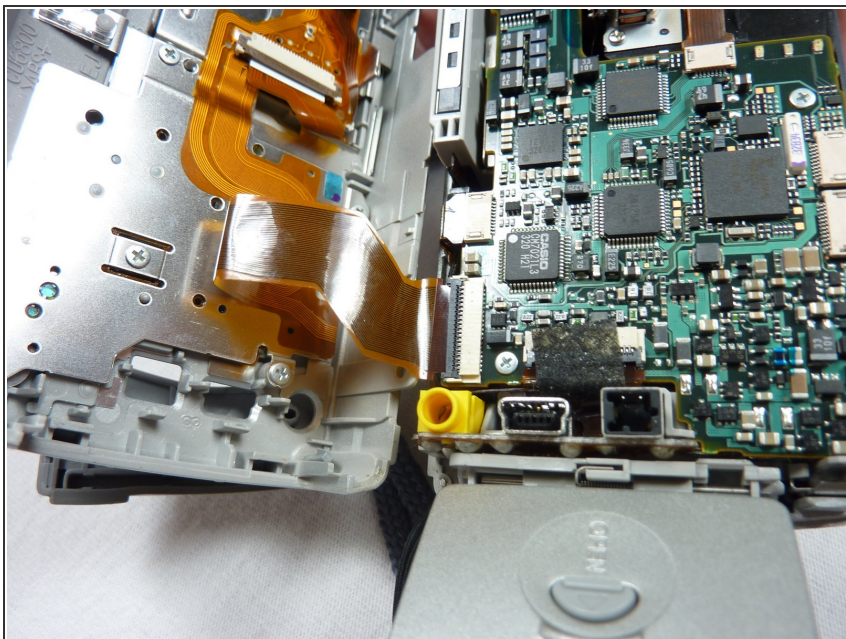
## Step 4



- Simultaneously unclip all of the clips holding in the circuitry. Remove the back case.
- ⓘ The circuitry will still be connected to the back case by ribbon cables.

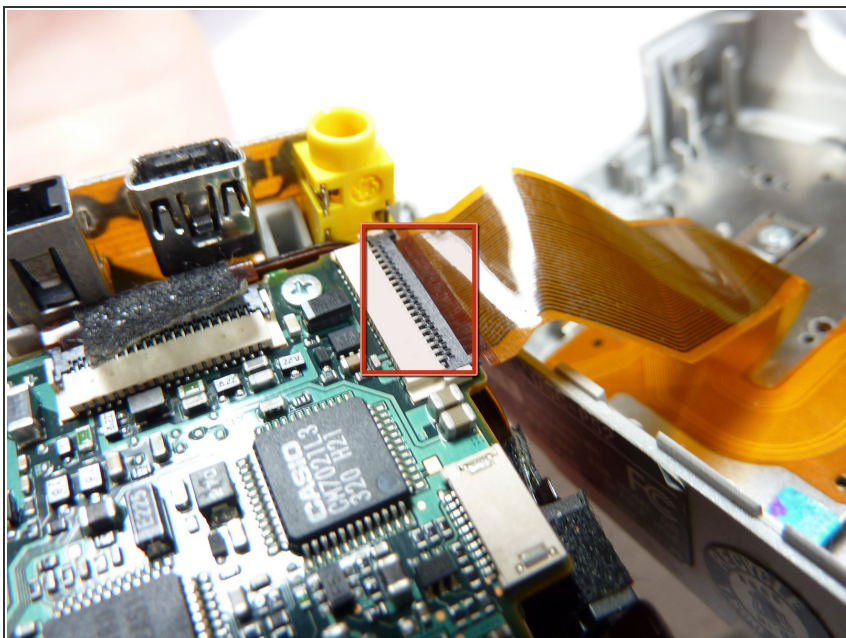


## Step 5



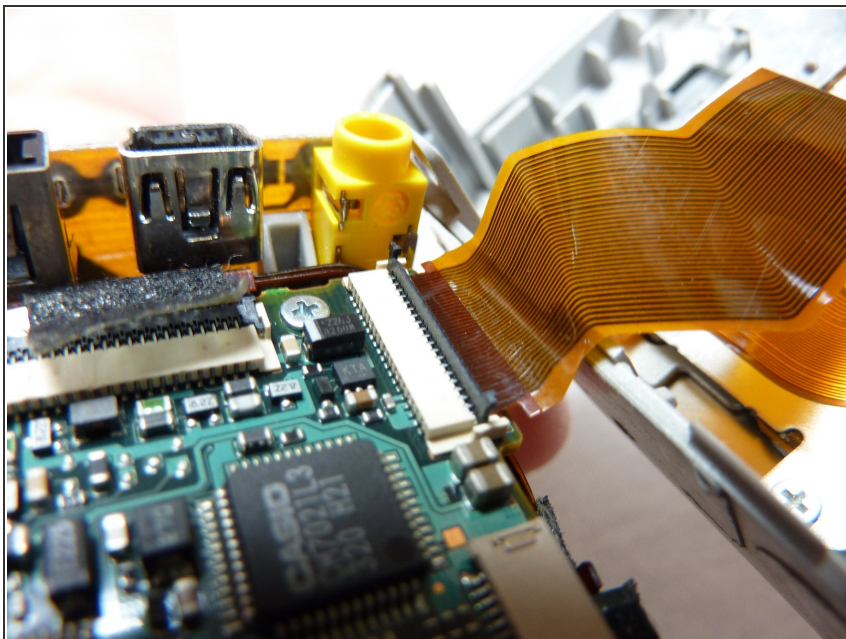
- Open the case as shown.

## Step 6



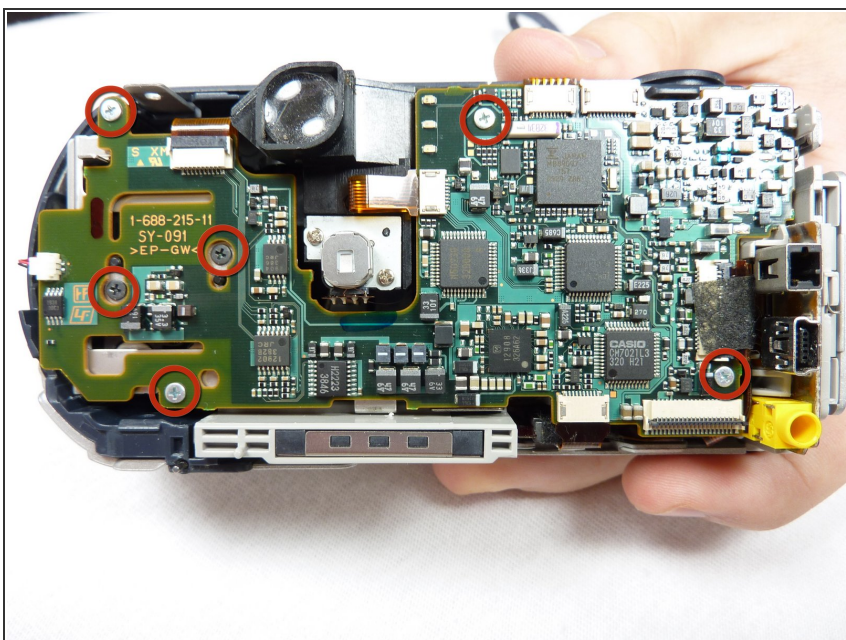
- Unclip the clip holding the ribbon cable in.
- ⓘ Other ribbon cables might not have a clips.

## Step 7



- Pull the ribbon cable out.

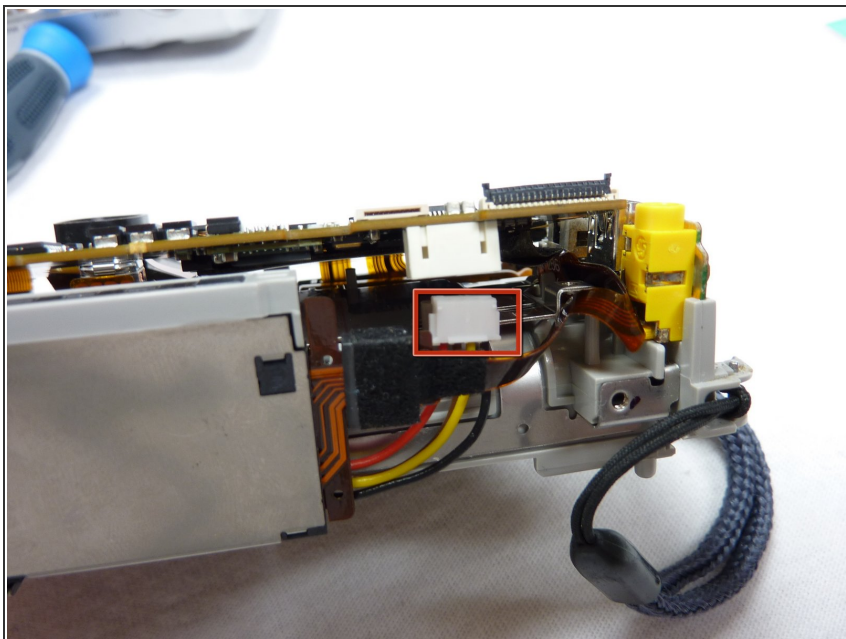
## Step 8 — Motherboard Assembly



- Remove all six screws on the front side of the motherboard circled in the picture.
  - Pull the motherboard from the rest of the housing.
- i** It will still be connected to the flash unit.

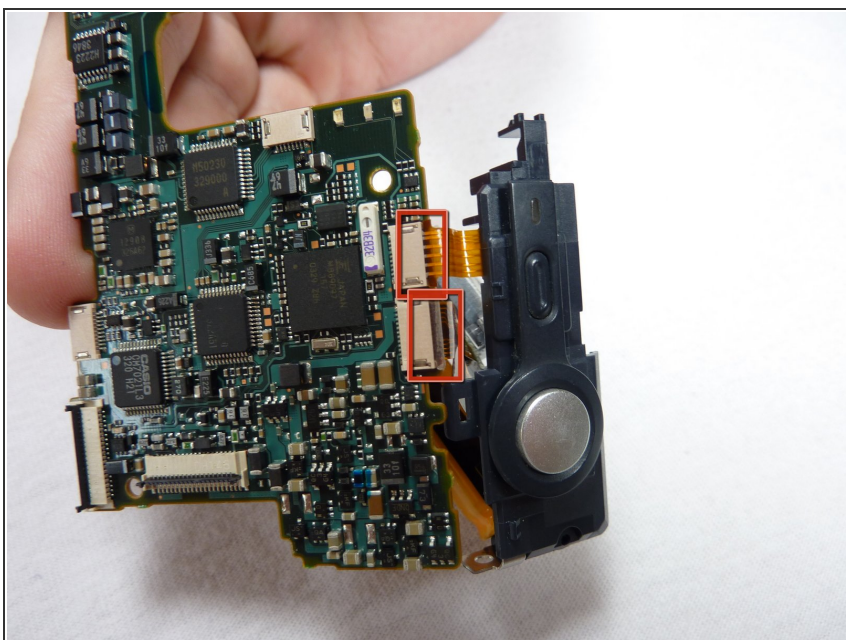


## Step 9



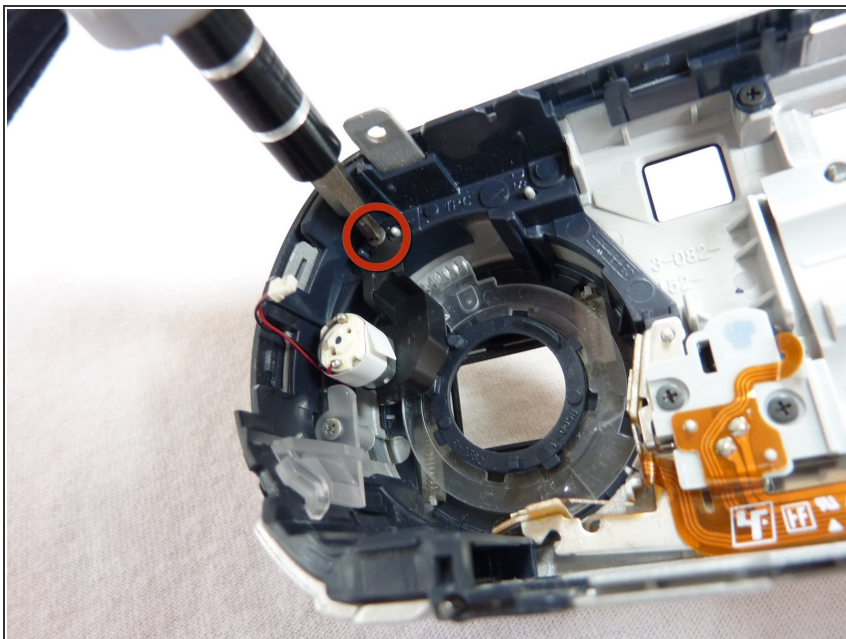
- Remove the cable on the back side of the motherboard.

## Step 10



- Detach the ribbon cables shown.
- ⚠ Careful! Touching the leads of the large yellow capacitor can result in a painful shock.
- Remove the flash unit from the motherboard.

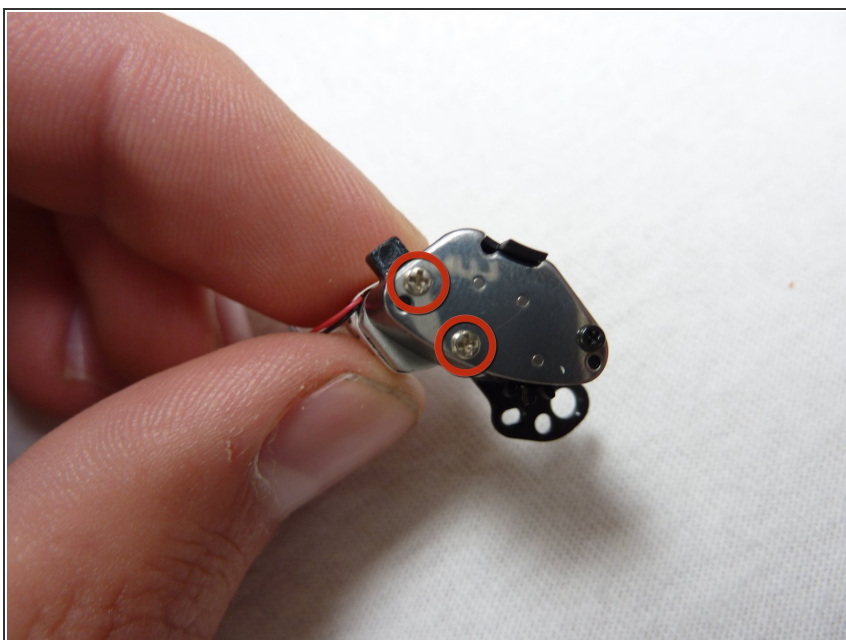
## Step 11 — Shutter Motor



- Remove screw securing motor and mount in place.

⚠ Be careful to leave shutter gears in the correct position

## Step 12



- Remove the two screws holding motor to mount/gears.
- Remove the motor from the mount.

To reassemble your device, follow these instructions in reverse order.