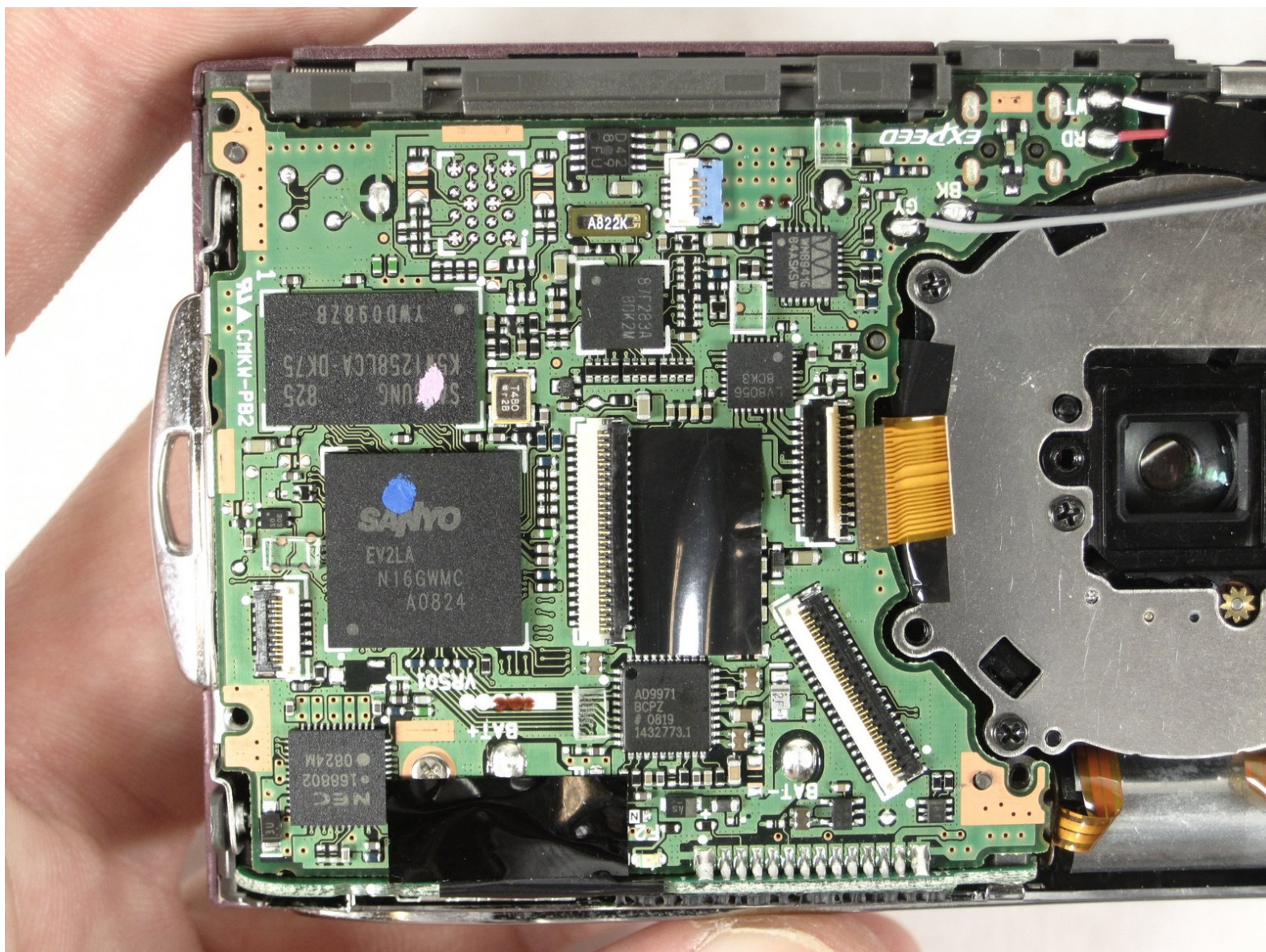




Nikon Coolpix S210 Circuit Board Replacement

Removing the Nikon Coolpix S210 circuit board.

Written By: John Bowers



INTRODUCTION

You will be desoldering the circuit board of the camera.



TOOLS:

- [Phillips #00 Screwdriver](#) (1)
 - [Soldering Workstation](#) (1)
 - [Spudger](#) (1)
-

Step 1 — Battery



- Place thumb on the battery cover panel on the bottom of the device.
- Slide the panel to the right away from the camera.

Step 2



- Slide the orange latch outward towards the corner of the camera.
- The battery should pop out.
- Remove the battery and reattach the cover.

Step 3 — Back Case



- After removing the battery, unscrew the four 3.10mm screws on the side opposite the buttons.

Step 4



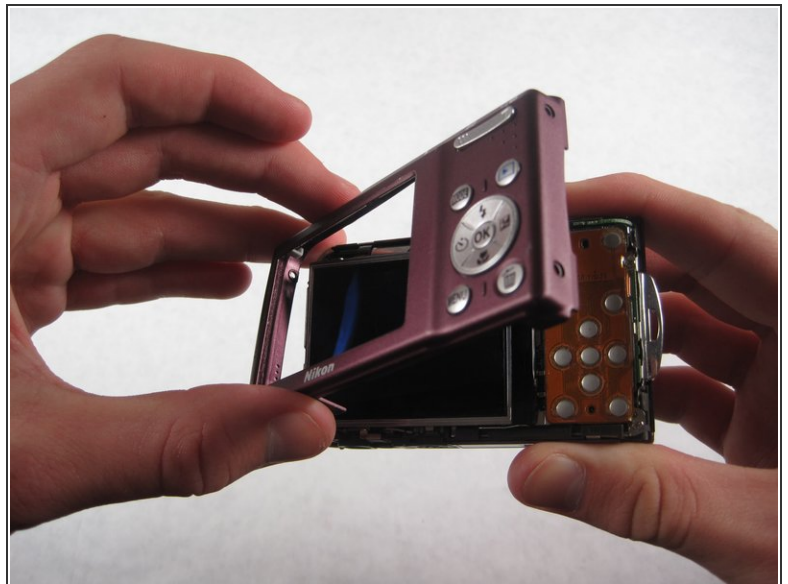
- Unscrew the three 4.05mm screws on the bottom of the camera below the lens.

Step 5



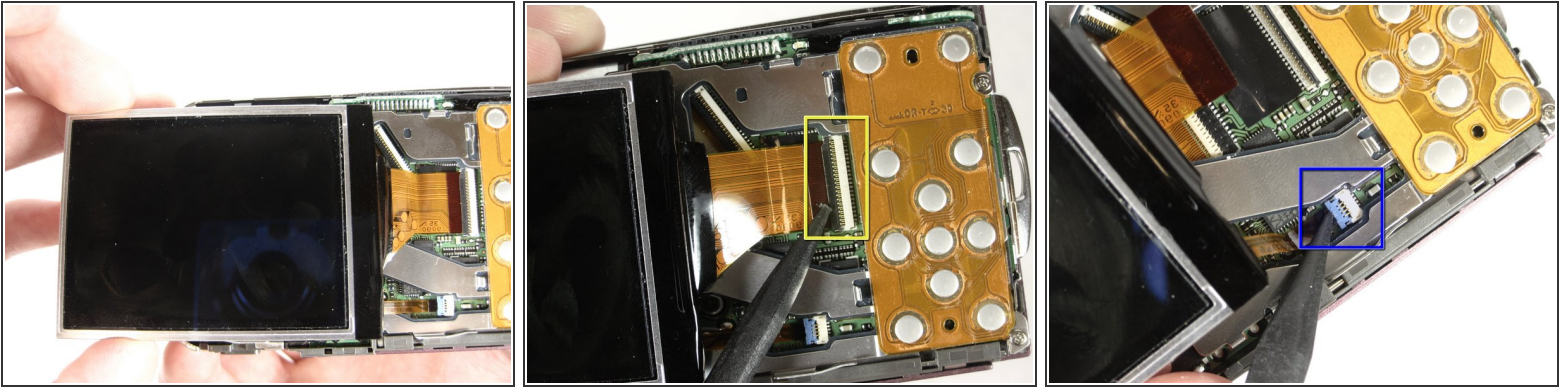
- Unscrew the two 4.05mm screws on the side next to the buttons.

Step 6



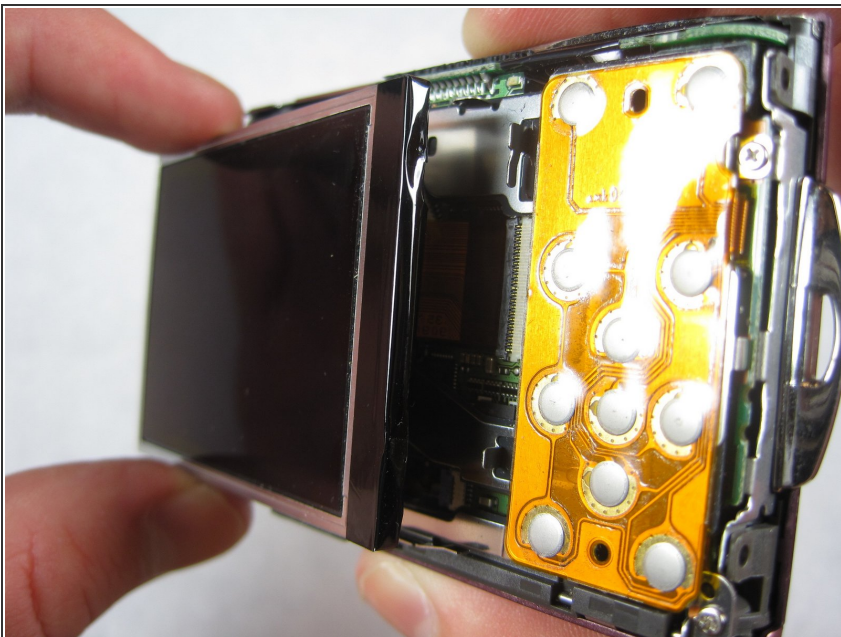
- Gently wedge the flat end of the spudger between the back case and the wrist-strap mount.
- ⓘ The wrist-strap mount is the thin metal piece on the side of the camera. Your camera may have the wrist-strap attached, but you will not need to remove it to continue.
- Carefully pry the back case away from the camera and then gently lift it off.

Step 7 — LCD screen



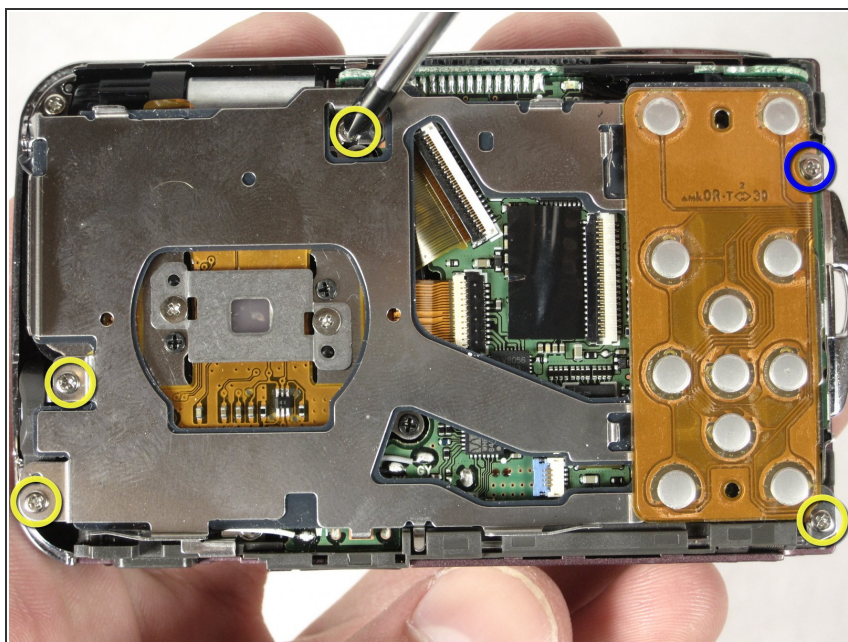
- ✦ Having removed the back case, the LCD screen should be sitting loosely on the camera, attached only by a wide ribbon and a narrow ribbon.
- i The ribbons are connected to and held in place by small plastic latches.
 - To remove the wide ribbon, gently pry the spudger underneath the black plastic latch where the ribbon connects and lift up. The ribbon should slide out easily.
 - Repeat the same process with the smaller ribbon, this time looking for a light blue latch.

Step 8



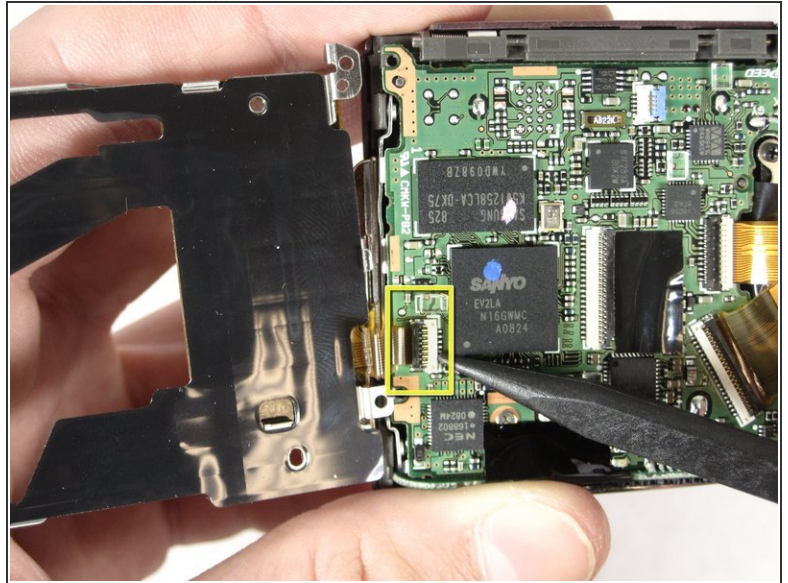
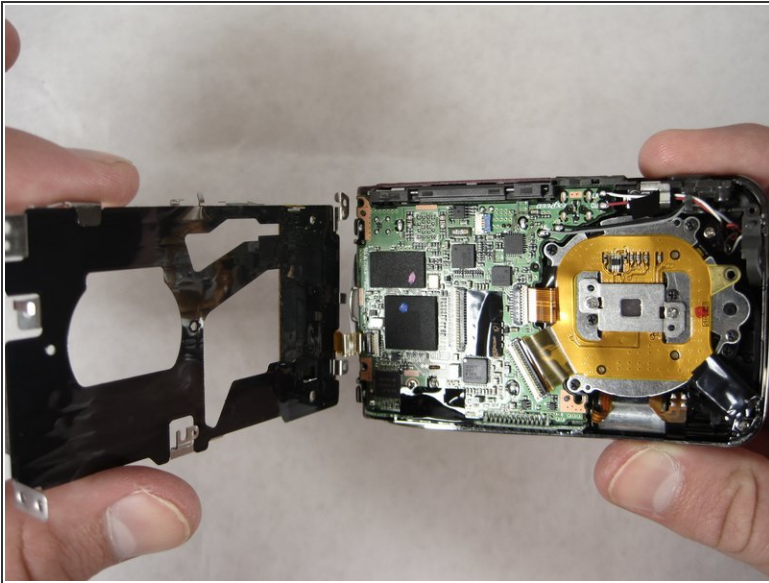
- Gently remove the LCD screen.

Step 9 — Circuit Board Cover



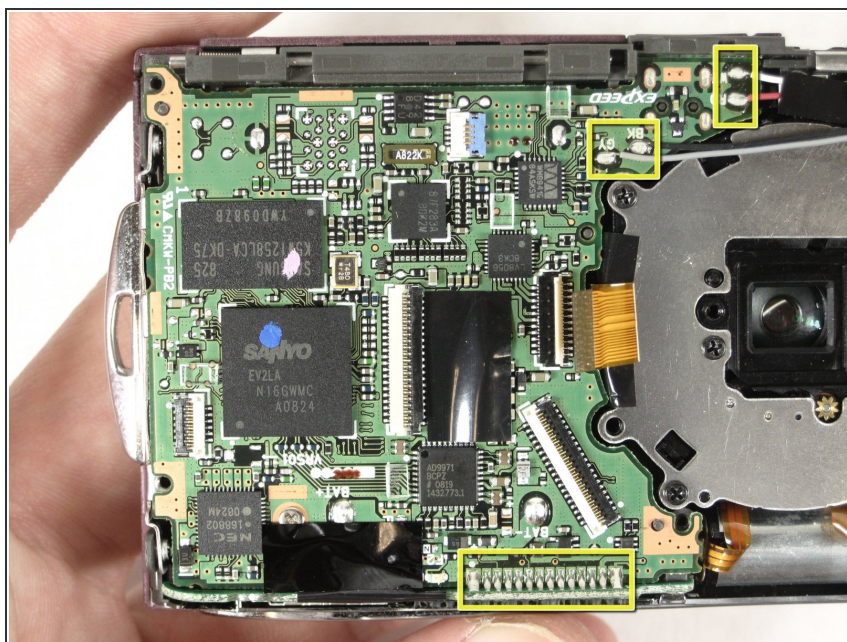
- After removing the LCD screen, unscrew the four 3.8mm screws that hold down the metal plate
- Unscrew the 2.5mm screw next to the wrist-strap mount.

Step 10



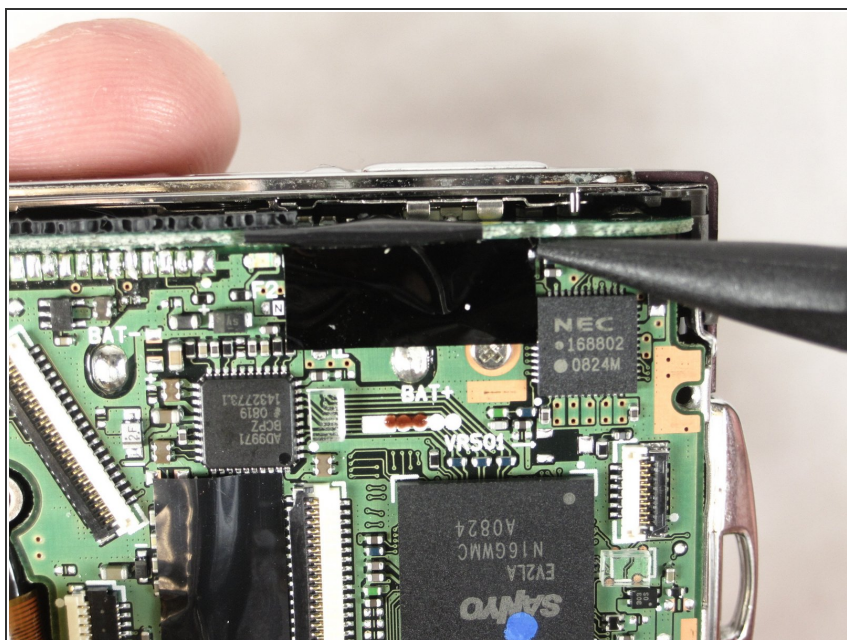
- Position the camera with the lens facing down and the shutter button facing you.
- Lift the metal plate away from the camera without removing it fully. There is a ribbon attaching the edge of the plate to the camera.
- ⓘ The ribbon is being held in place by a black latch.
 - Carefully pry the spudger under the black latch and lift gently upward. The ribbon will slide out easily.
- With the ribbon unlatched, the entire metal plate should now be detached.

Step 11 — Circuit Board



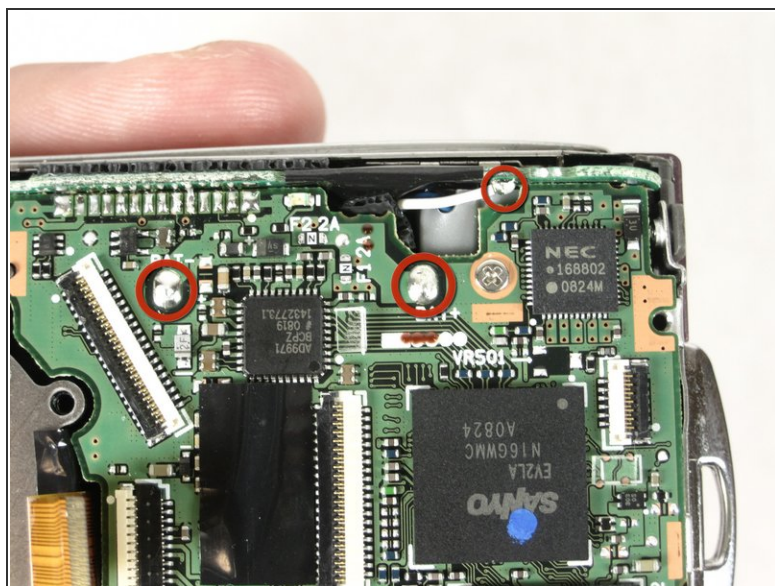
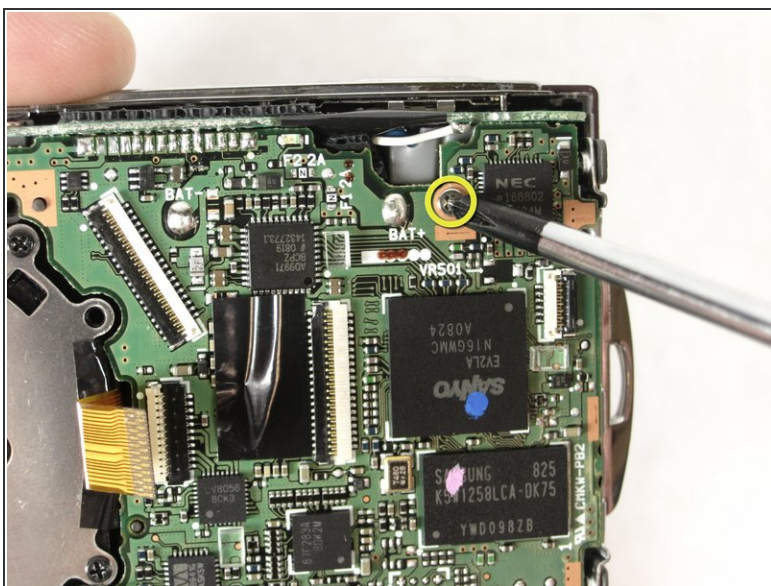
- Desolder the marked areas. For desoldering instructions go [-here-](#)

Step 12



- Place the spudger underneath the small black tape as shown. Gently lift the spudger up to remove the tape.

Step 13



- Remove the 3.8mm screw from the circuit board.
- Desolder the marked areas.

To reassemble your device, follow these instructions in reverse order.