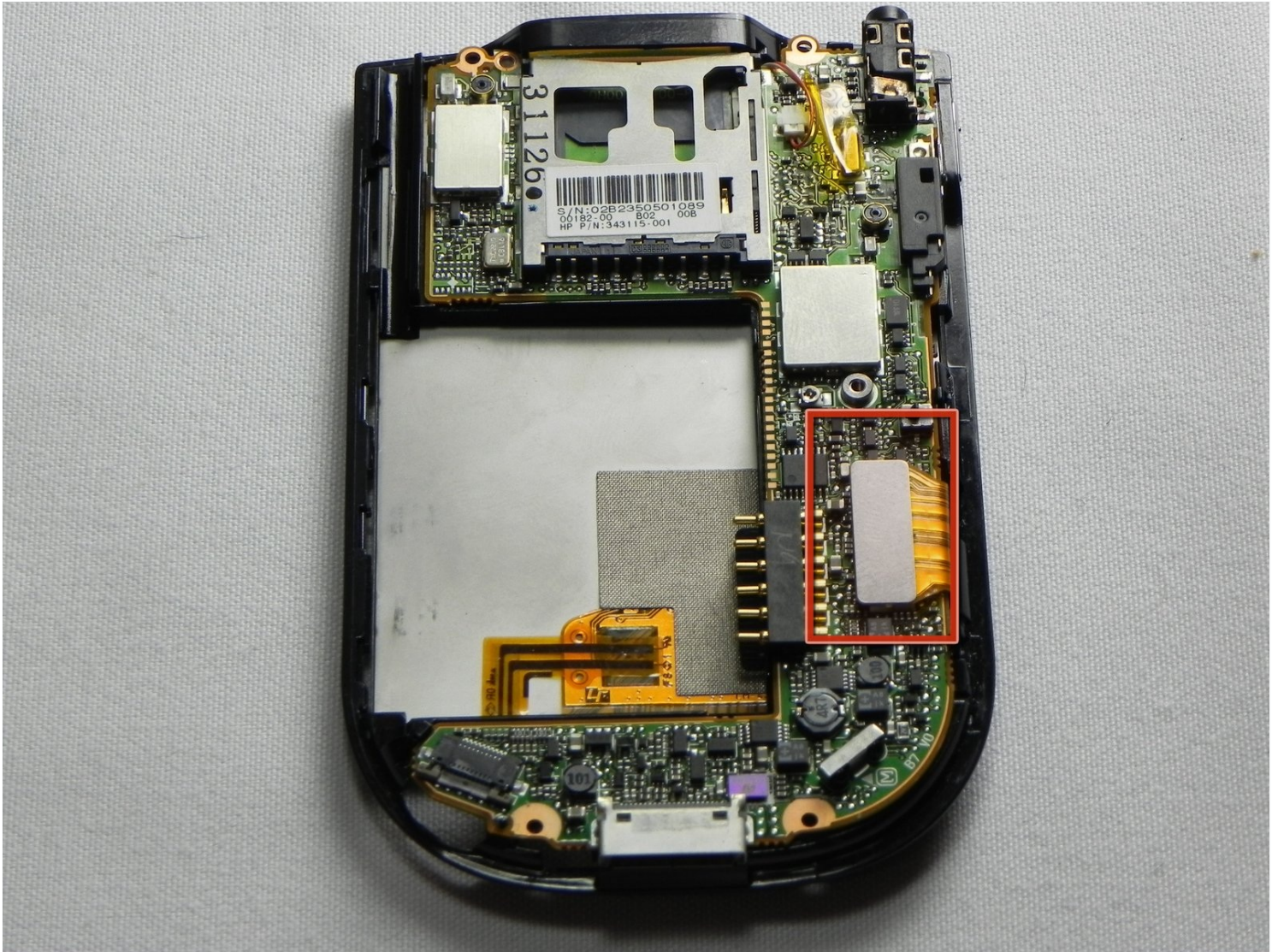




HP iPAQ h4155 Motherboard Replacement

Written By: John Pagliero



TOOLS:

iFixit Opening Tool (1)

T5 Torx Screwdriver (1)

Phillips #00 Screwdriver (1)

Tweezers (1)

Step 1 — Battery



- While sliding the silver release tab up, simultaneously lift the cover up from the left side.

Step 2



- Push the tab left to right to remove the cover.

Step 3



- Now, lift the battery up and away from the device to remove it.

Step 4 — Back Case



- Remove the four silver screws using the T5 Torx Screwdriver (T5 x .25 in).

Step 5



- Remove the single black screw that is located beneath the HP sticker with the T5 Torx Screwdriver.

Step 6



- Next, use your plastic removal tool to separate the gray back from the black center piece.
- For better results, start the separation at the corner piece.

Step 7



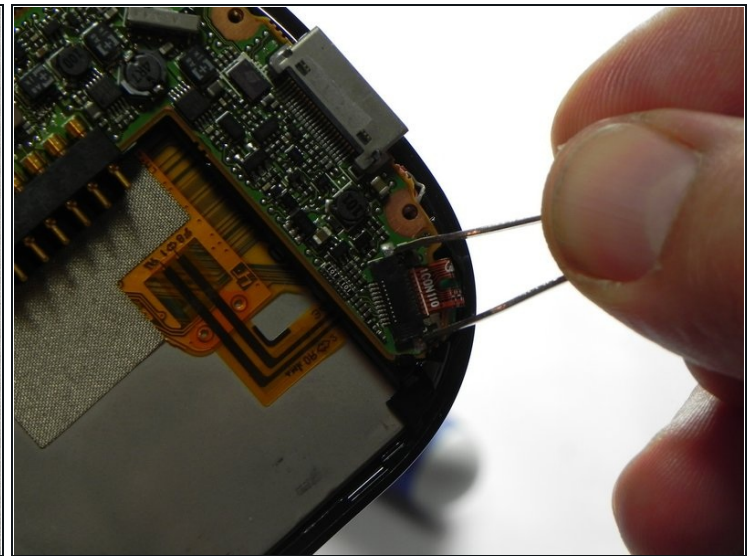
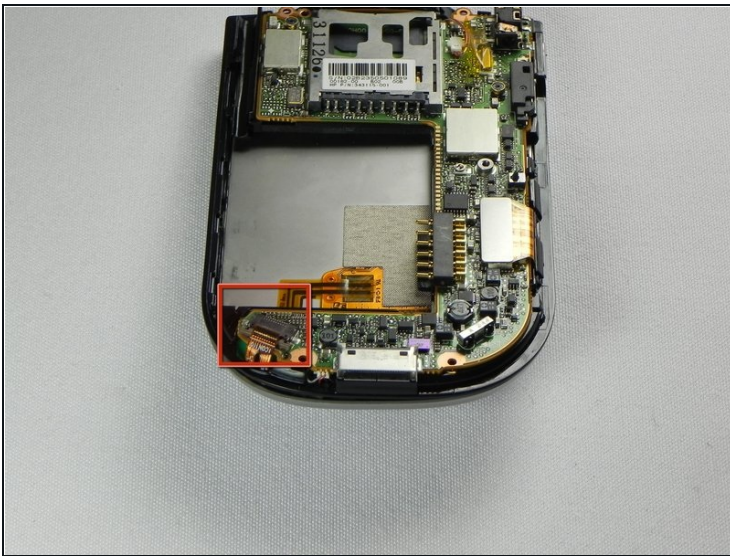
- Remove the back case.

Step 8 — Face Plate



- Now that the back cover is removed, use the #00 Philips x .17 screwdriver to remove the small screw to the left of the SD card slot.

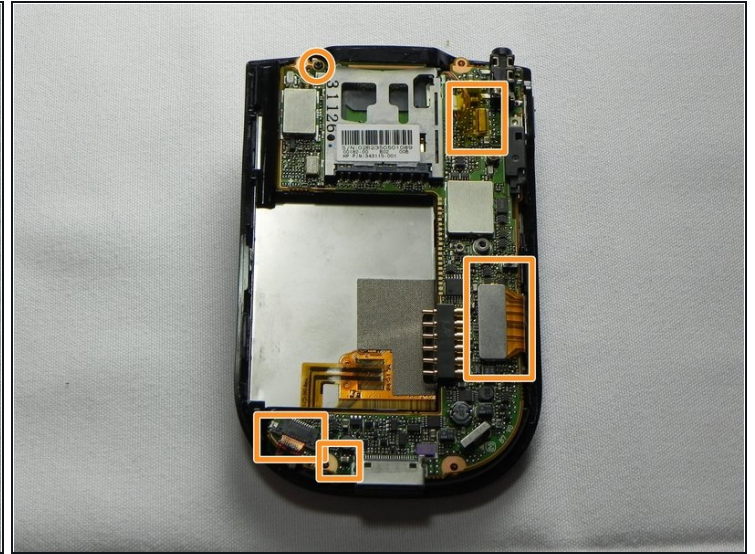
Step 9



- Next, unlock and remove the ribbon cable.
- Using metal [tweezers](#), carefully pull back on both sides of the brown bar unlocking the cable and slipping it out of the connector.

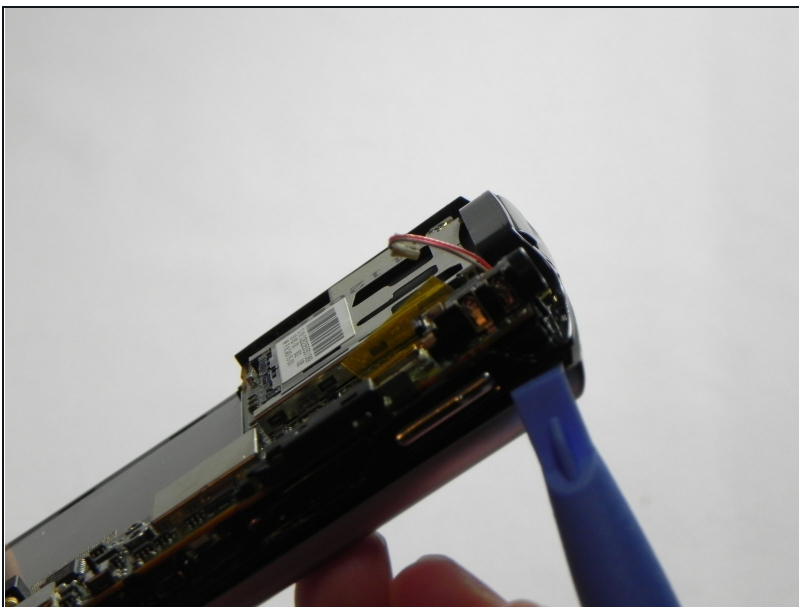
⚠ The bar, the connector, and the cable are fragile components that are easily broken.

Step 10



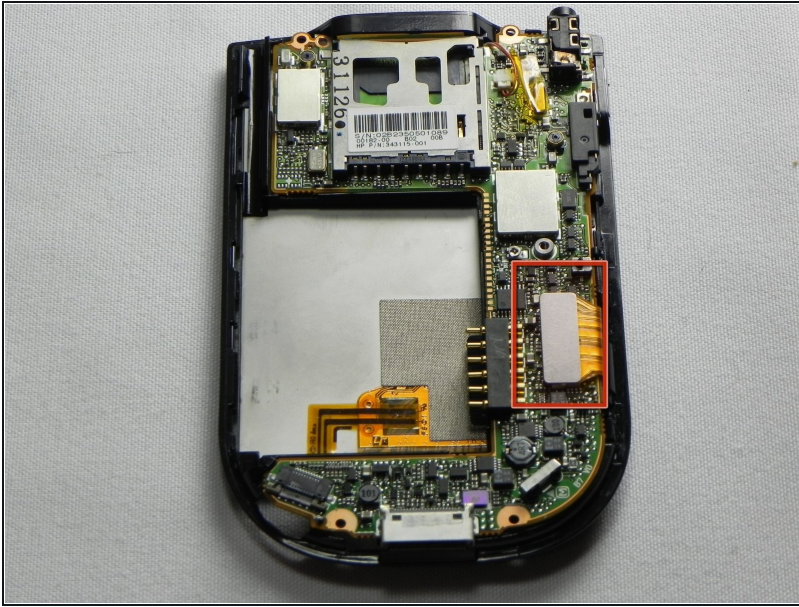
- Next, remove the wire from the bottom of the mother board.
- ① The easiest method is to use metal tweezers and grip the plug closest to the connector.
- Make sure all the connections are properly disconnected before separation from the motherboard.

Step 11



- Next, use a plastic removal tool and separate the silver front case from the black frame.

Step 12 — Motherboard



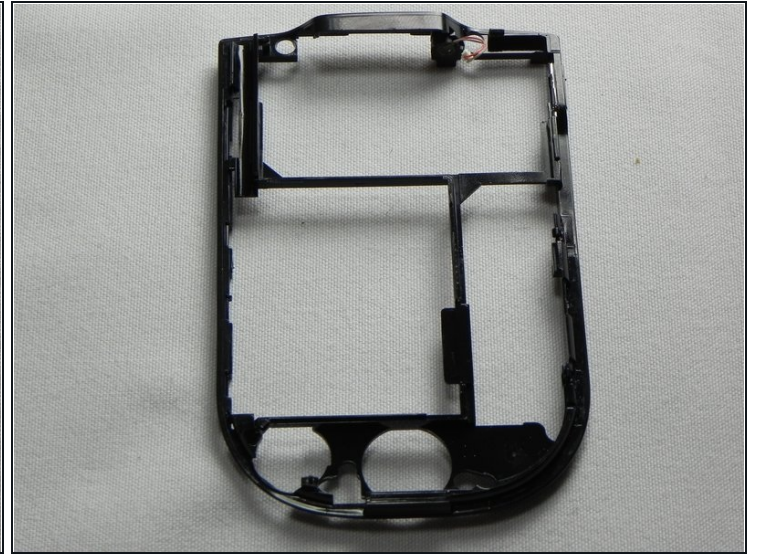
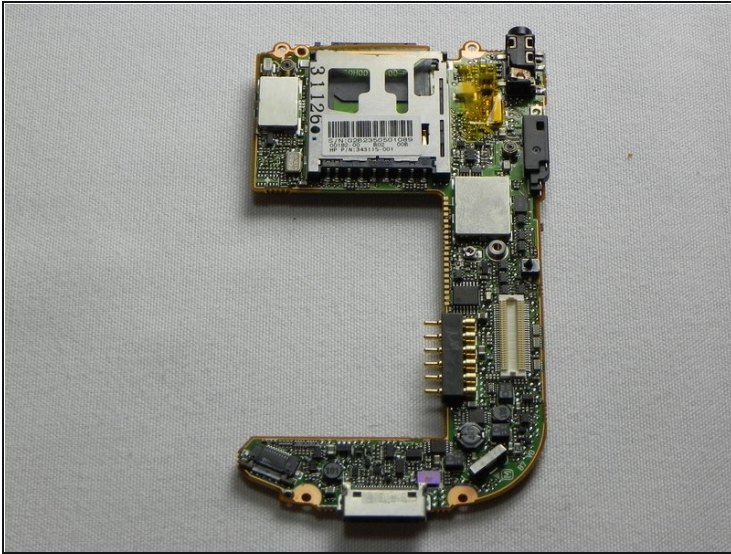
- Now that the front cover is removed we will need to disconnect the LCD screen from the motherboard. Pull the LCD connection out of the slot to properly disconnect.

Step 13



- Next we will need to remove the last wire from the motherboard
- ① The easiest method is to grab and pull with metal [tweezers](#) near the bottom of the plug near the connector.

Step 14



- Finally the mother board can be removed from the center black frame.

To reassemble your device, follow these instructions in reverse order.