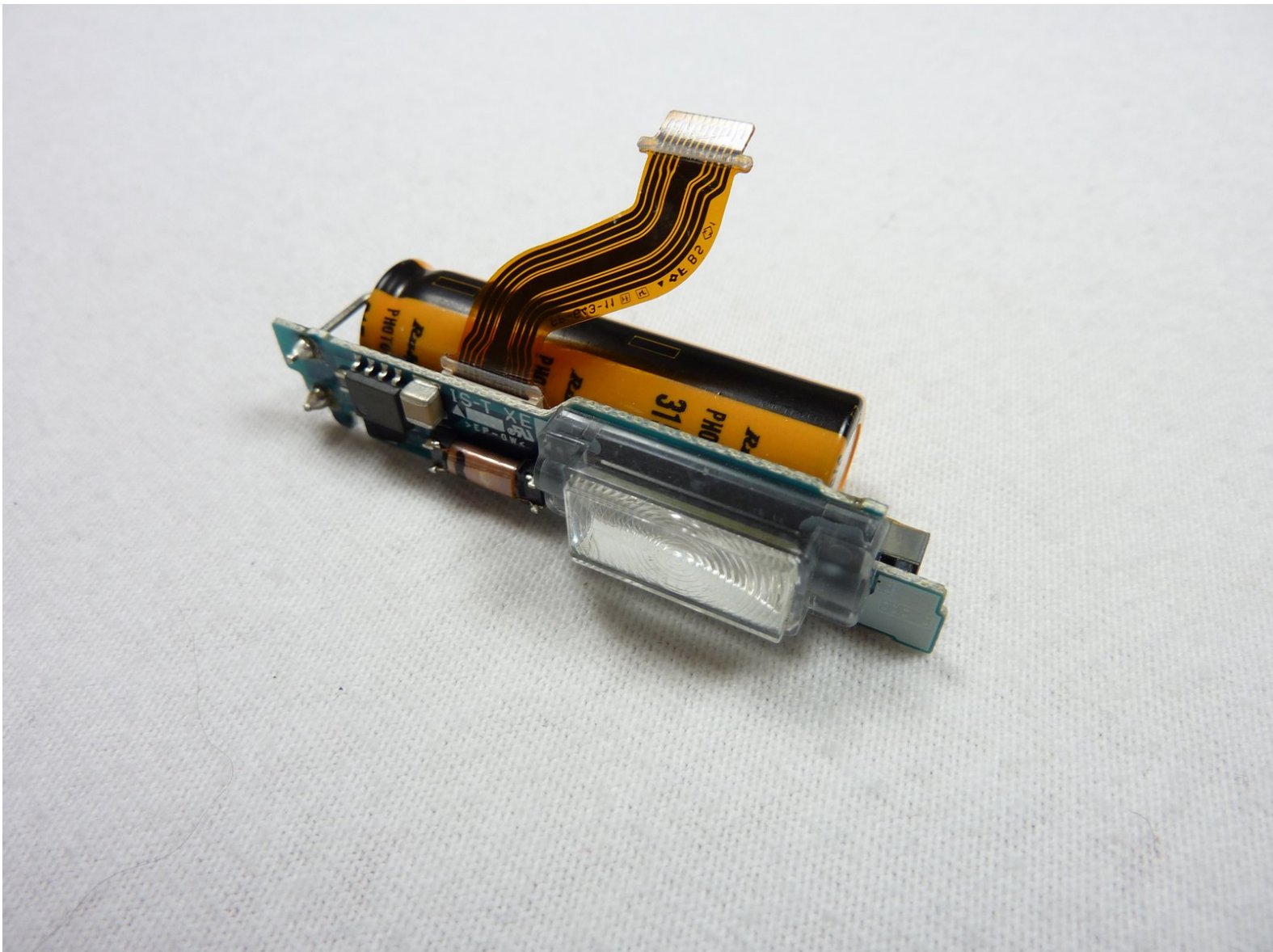




# Sony Cyber-shot DSC-P52 Flash Unit Replacement

This guide will go explain how to replace the flash unit in the Sony Cybershot DSC-P52.

Written By: Trevor



## INTRODUCTION

The camera will need to be completely disassembled to get to the flash, so only do this as a last resort.



### TOOLS:

- [Phillips #0 Screwdriver](#) (1)



### PARTS:

- [Flash Replacement](#) (1)

## Step 1 — Outer Case



- Open the battery compartment and remove the batteries.
- Remove all of the visible screws on the outside of the case.
- ① There should be three of them that are all easily located.

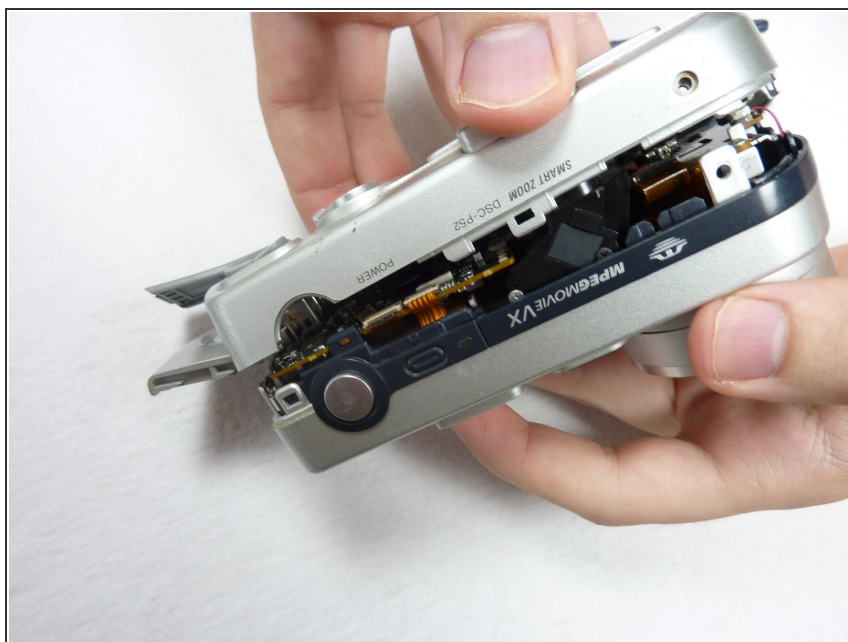
## Step 2



- Open the memory card compartment.
- Remove the screw next to the memory card slot.



## Step 3



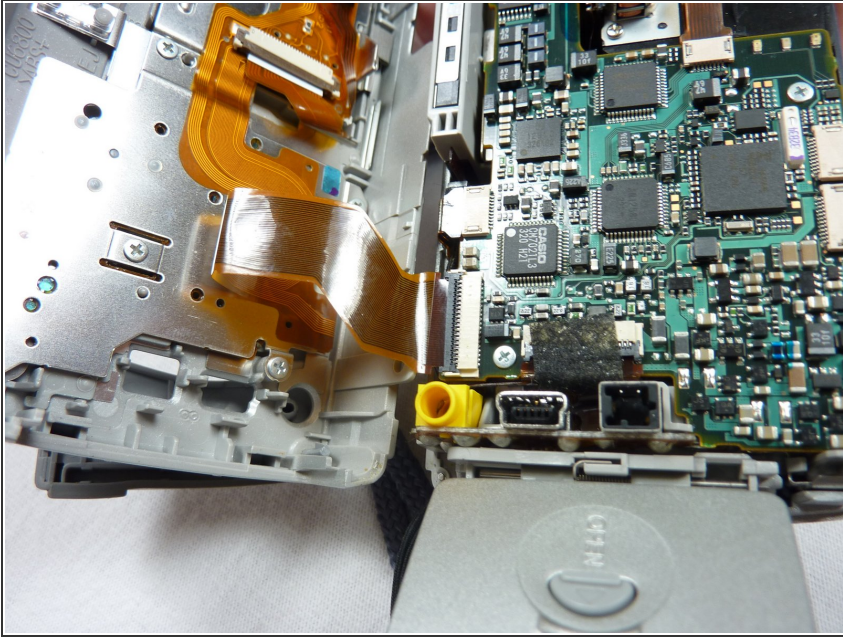
- Pull apart the front and back cover pieces carefully.
- ① The front cover should come completely free with little effort.
- ① The back cover will still be attached to the circuit board.

## Step 4



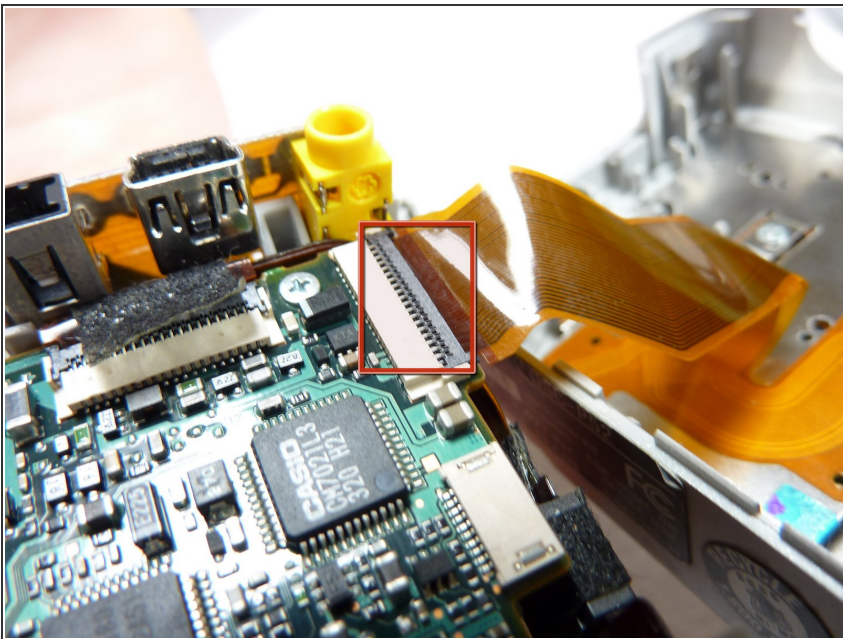
- Simultaneously unclip all of the clips holding in the circuitry. Remove the back case.
- ① The circuitry will still be connected to the back case by ribbon cables.

## Step 5



- Open the case as shown.

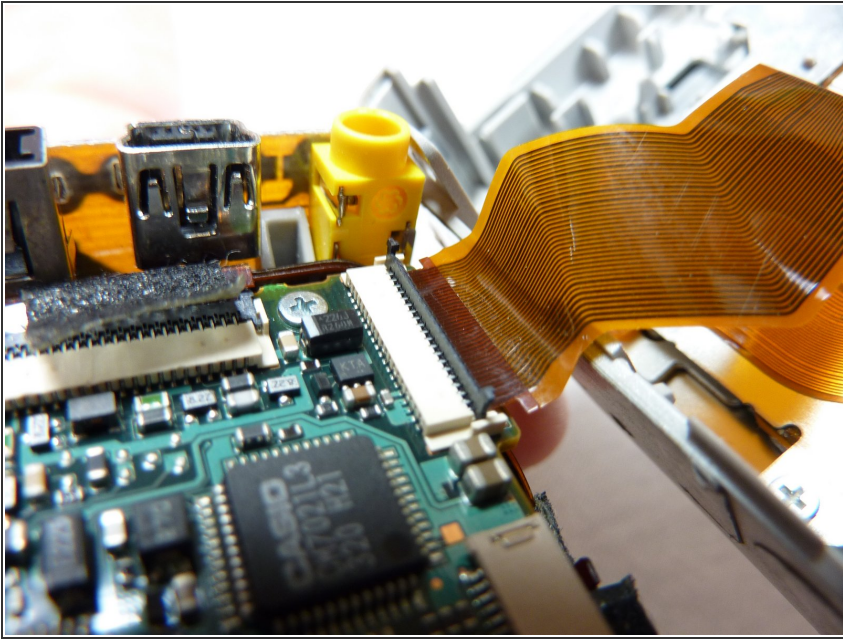
## Step 6



- Unclip the clip holding the ribbon cable in.
- ⓘ Other ribbon cables might not have a clips.

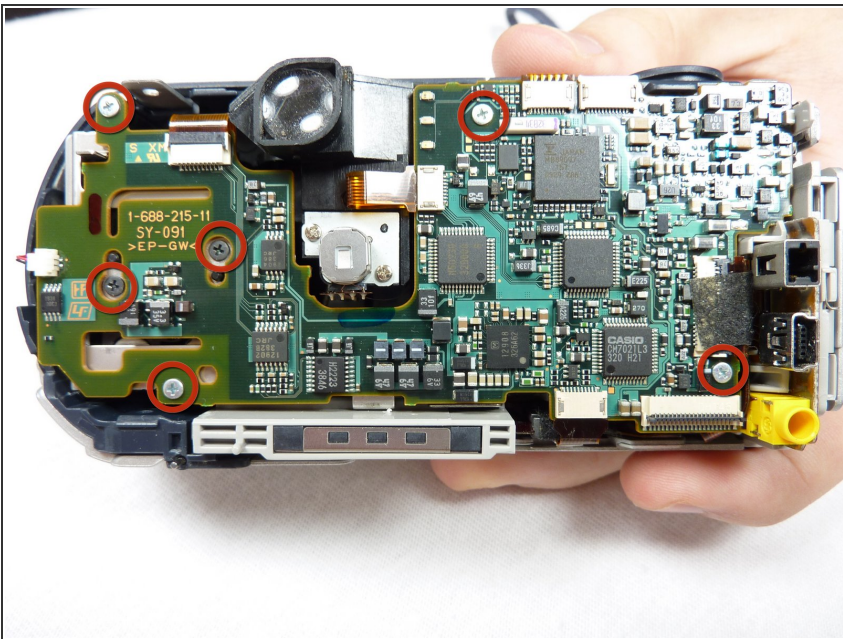


## Step 7



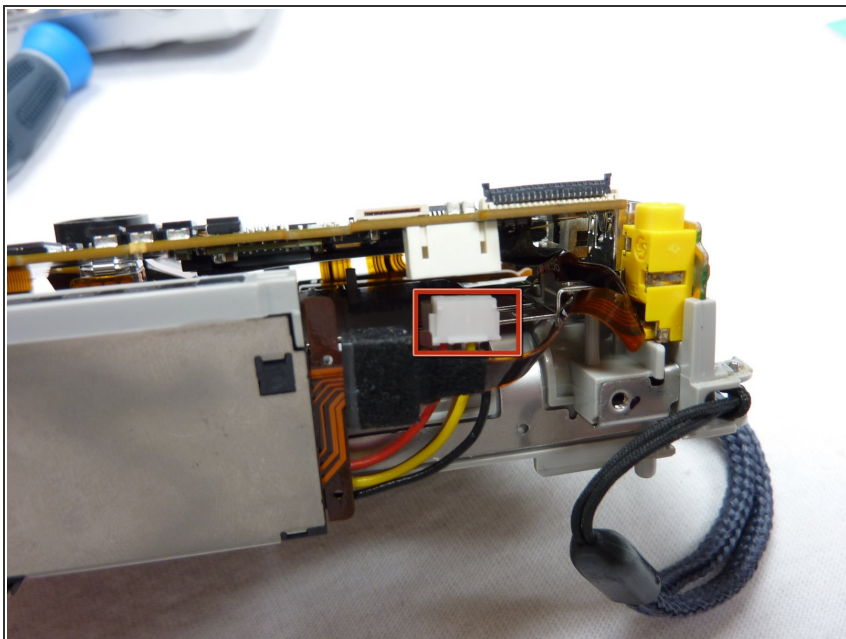
- Pull the ribbon cable out.

## Step 8 — Motherboard Assembly



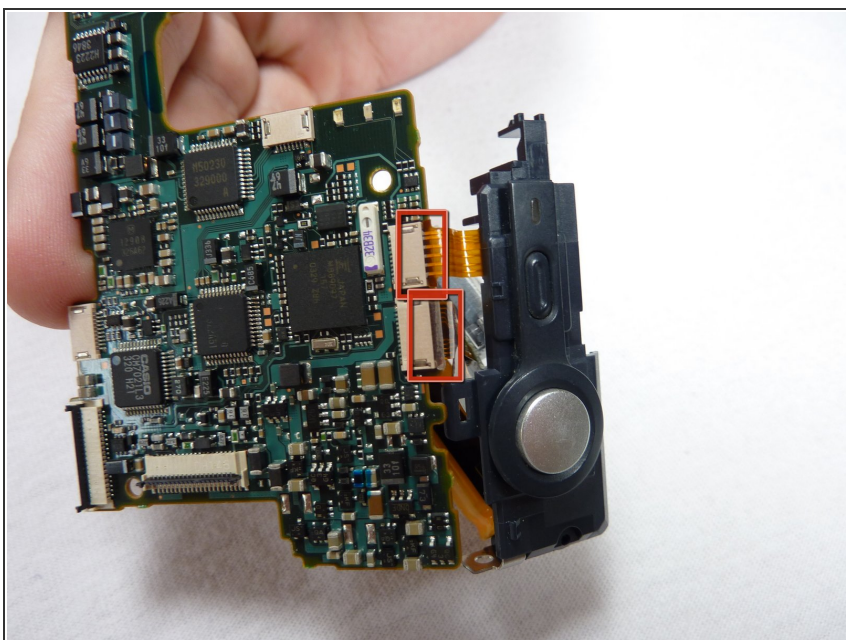
- Remove all six screws on the front side of the motherboard circled in the picture.
  - Pull the motherboard from the rest of the housing.
- i** It will still be connected to the flash unit.

## Step 9



- Remove the cable on the back side of the motherboard.

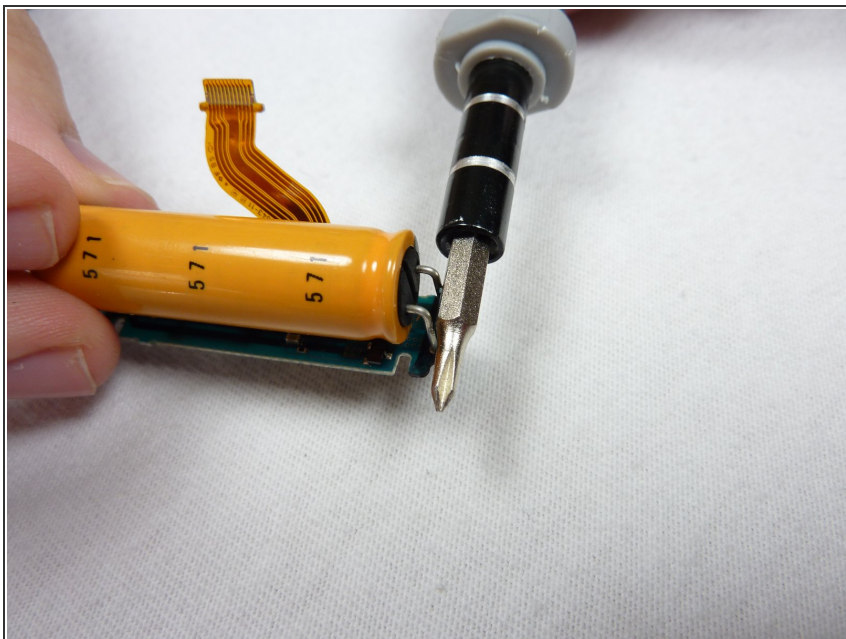
## Step 10



- Detach the ribbon cables shown.
- ⚠ Careful! Touching the leads of the large yellow capacitor can result in a painful shock.
- Remove the flash unit from the motherboard.



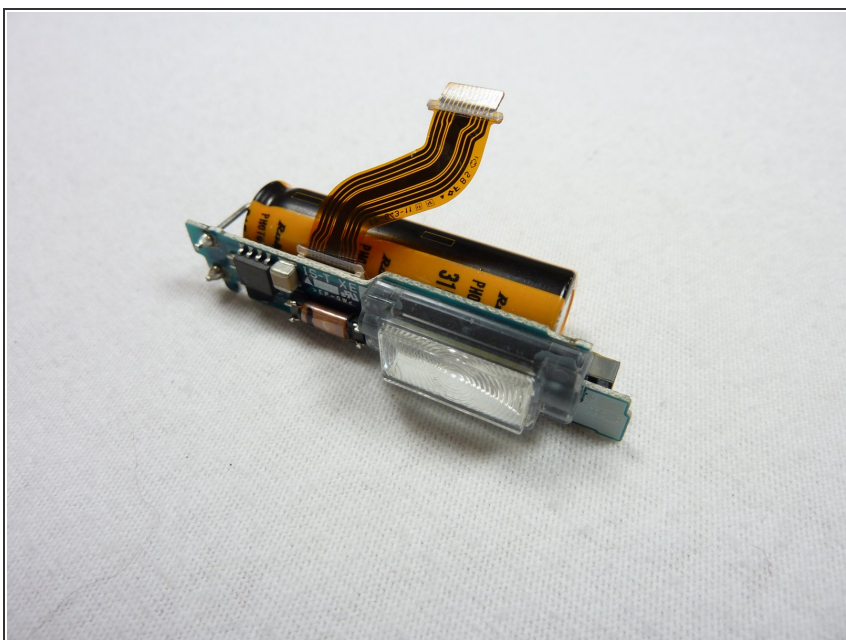
## Step 11 — Flash Unit



- Discharge the yellow capacitor attached to the flash unit by shorting the leads with a screw driver.

⚠ Avoid touching the leads with your hands, as this can result in a painful shock.

## Step 12



- Replace the flash unit.

To reassemble your device, follow these instructions in reverse order.