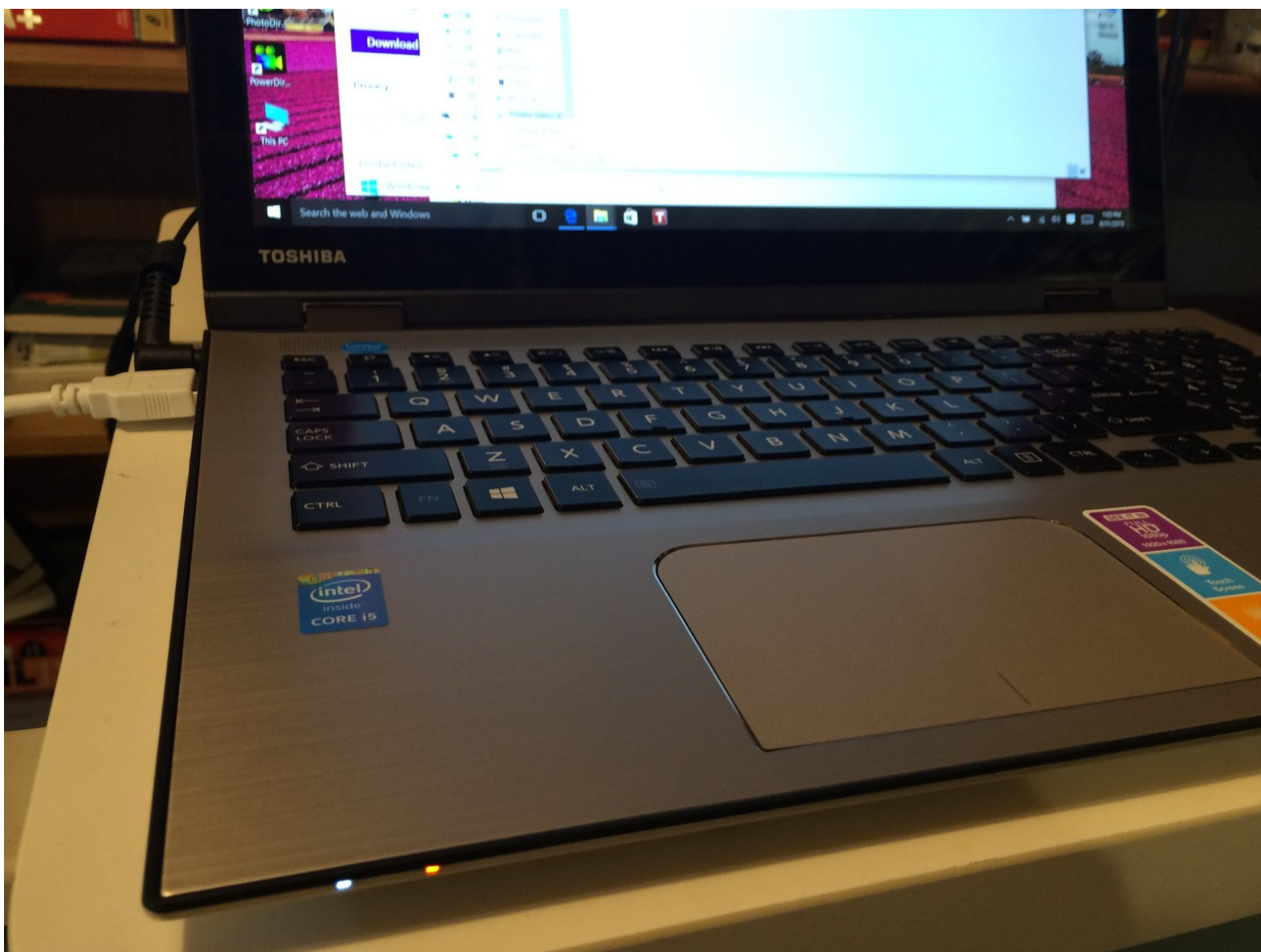




Toshiba Satellite P55W Hard Drive Replacement

How to remove bottom panel on laptop so that HDD can be replaced with SSD. (Or upgrade RAM memory etc.)

Written By: Netmammal



This document was generated on 2020-11-21 11:31:51 PM (MST).

INTRODUCTION

How to remove bottom panel on laptop so that HDD can be replaced with SSD. (Or upgrade RAM memory etc.)



TOOLS:

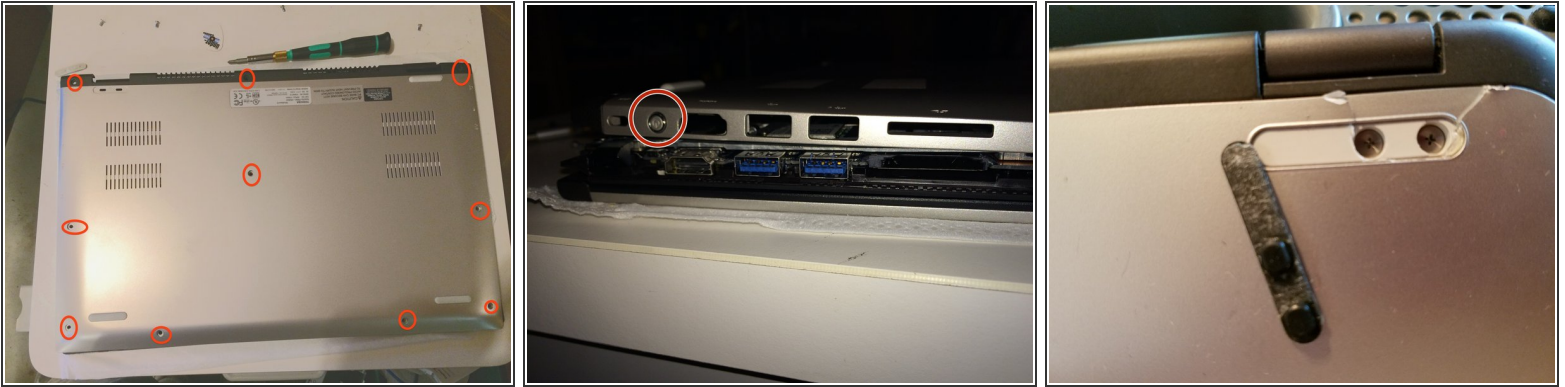
- [Mini screwdrivers, plain and philips](#) (1)
- [Plastic Razor Blade](#) (1)




PARTS:

- [1 TB SSD / Upgrade Bundle](#) (1)
- [250 GB SSD / Upgrade Bundle](#) (1)
- [500 GB SSD / Upgrade Bundle](#) (1)
- [2 TB SSD](#) (1)

Step 1 — Remove 10 screws

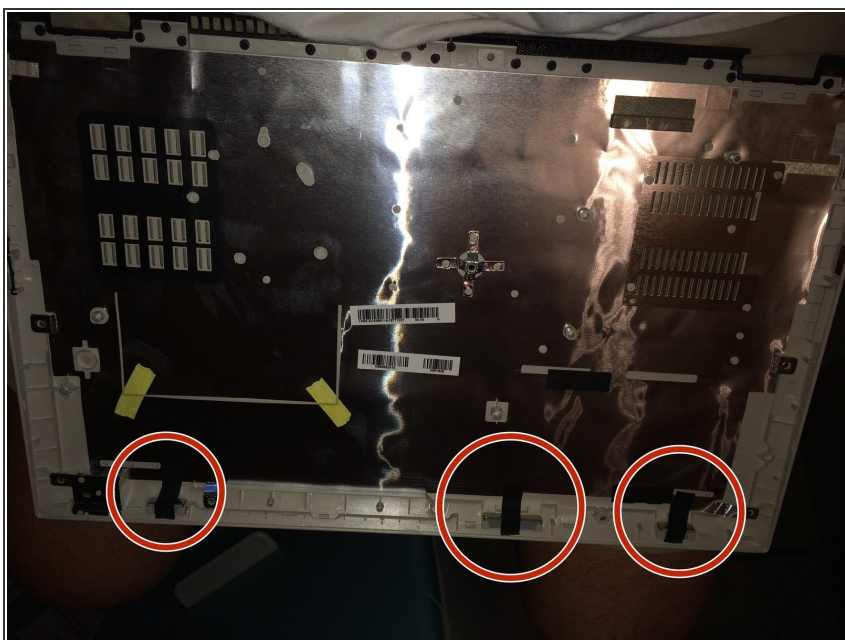


- Do not remove the footpad on the upper left, there are no screws under any of the footpads on this model of Satellite

 A reader with a p55w-B5318 DID have screws under the footpads, Worse, he missed that one of the footpads had a white double-stick section which stayed on, and covered over the screws when he removed the pad. If you can not get the bottom off with a reasonable amount of force, check under your footpads for screws. (See 3rd photo)

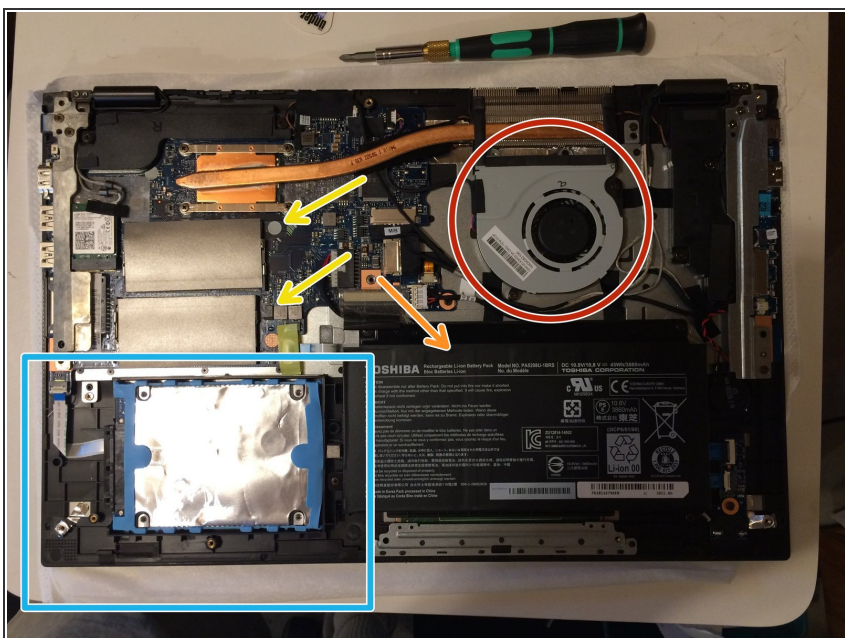
- Once all of the screws are out, slide your tool of choice between top and bottom (plastic razor, credit card or guitar pick)
- Start at front of machine, and work your way around to the black hinge side.
- The black hinge side looks almost like it is a separate piece which the silver bottom slides under. Nope! It is attached to the rest of the bottom.
- Once you have separated the silver areas, lift the front of the bottom slightly, and push backwards horizontally towards the hinge side. The backside black area "cups" the hinge area, you can not lift it straight up like the rest of the bottom.
- As you remove the bottom, do not worry about the on/off button. It is attached to the bottom shell, and has no connection to the motherboard.
- The 2nd picture is a side view of the on/off button area after the bottom has been removed. There are no connections or cables of any sort between bottom shell and rest of laptop.

Step 2 — Bottom removed - be careful of magnets!



- The bottom shell has three very strong **magnets**. Do not lay the shell down on another laptop or near any hard drives!

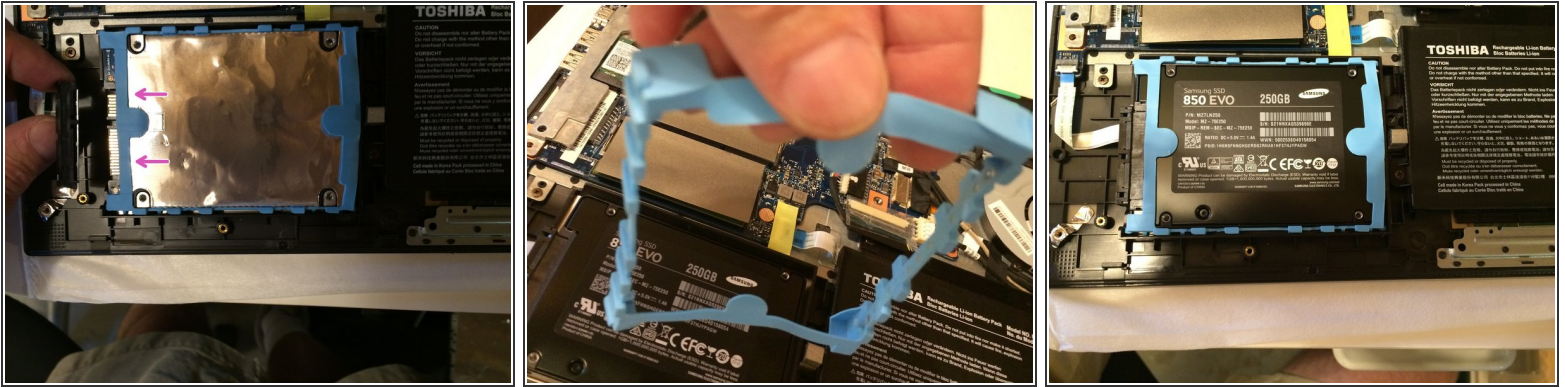
Step 3 — View of inside of P55W-C5200X



- The hard drive is in the blue square.
- ① Some models come with a factory-installed mSATA drive instead of the 2.5" SSD pictured. In that case, the mSATA drive will be where the yellow arrows indicate the RAM memory is, with the pins lining up against the blue area, and the butt towards the bronze heatsink.

- To remove, unscrew the one screw in the upper right hand corner of the drive (would be approximately where the top yellow arrow is.) Gently lift the free end until it angles up from the pins. Pull and it slides right out.
- ⓘ The 2.5" drive bay is empty, but there are no connection sockets. According to Toshiba, it is there due to the variations in the P55W models (as seen in this guide) and all use the same motherboard and layout.
- You may have to pry the 2.5" hard drive up with a little bit of force, the silicon was sticky.
- The RAM SIMMs are located under those gray flaps with two yellow arrows above the hard drive.*
- The orange arrow points to the battery taking up all of the lower area to the right of the hard drive.
- If you have owned your laptop for a while, now is a good time to blow out any dust in the fan and heatsinks. (Red circle.)

Step 4 — Remove the old HDD, insert new SSD



- Remove the SATA cables before you attempt to remove the hard drive. Pull in the direction of the pink arrows.
- You may need to lightly pry the hard drive out. The blue silicon was sort of sticky, and held it in.
- Remove the light blue silicon "frame" from the HDD, and place it on the SSD. You'll probably have to try twice to get aligned with the right end going on the right end of the SSD.
- You want to end up with your SSD attached with the SATA cables in a way that keeps the original fold in the ribbon the same way.

Step 5 — You are done



- The white cable that goes to the power button needs to be reinserted into the adapter on the cover just before snapping the cover back on.
- Once the SSD is in, replace the bottom shell, and re-insert all of the screws you removed.

To reassemble your device, follow these instructions in reverse order.