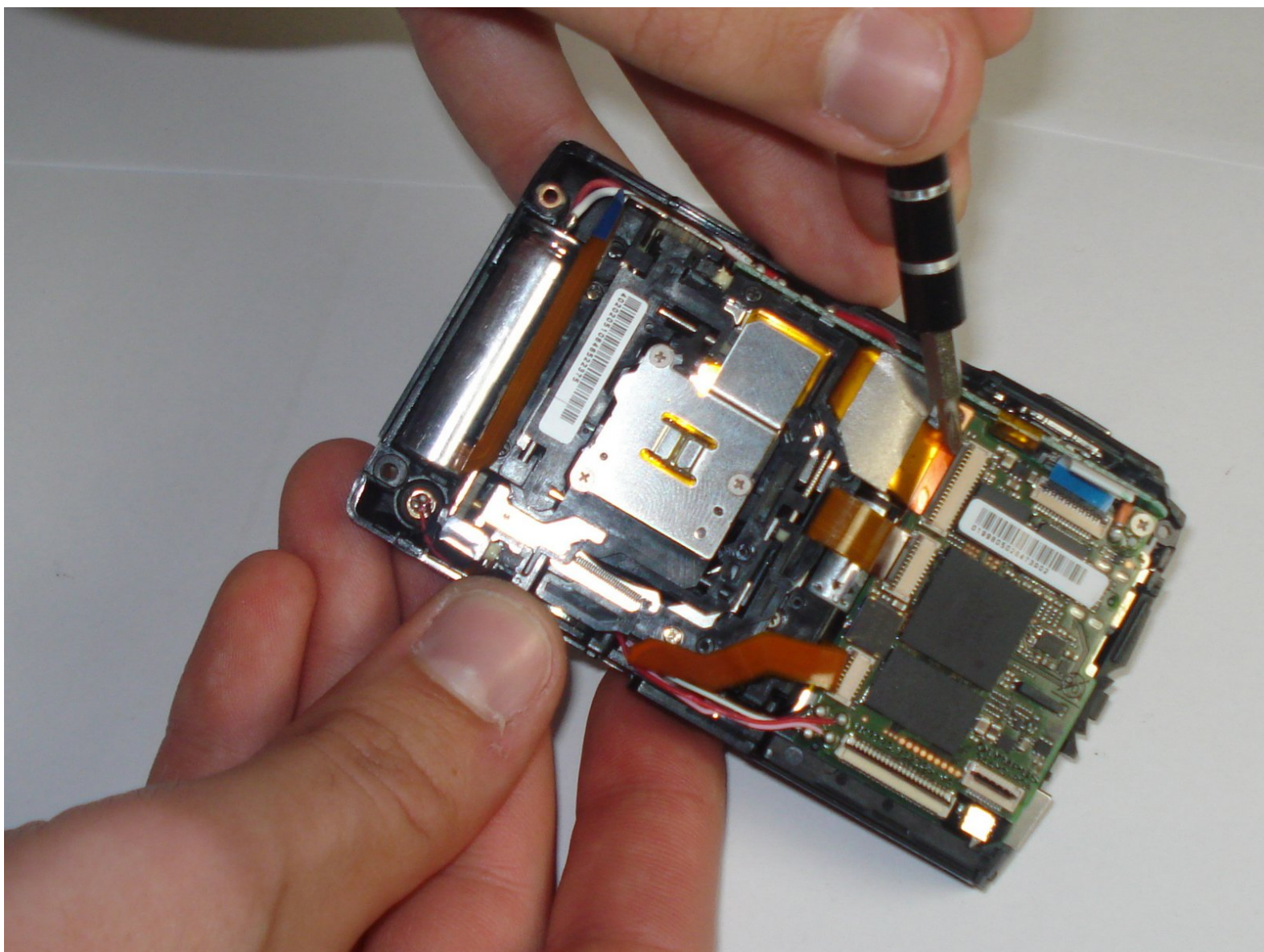




# Olympus Stylus 1010 Lens Replacement

Replace the Lens in your Olympus Stylus 1010.

Written By: Max McIntyre



---

## INTRODUCTION

This guide gives instructions on how to access and remove the lens from the Olympus Stylus 1010. Before proceeding make sure you have [removed the case](#) from the Olympus Stylus 1010.

---

### TOOLS:

- [Phillips #00 Screwdriver](#) (1)
-

## Step 1 — Disassembling Olympus Stylus 1010 Case



- Remove the five Phillips #00 bottom and right side panel screws.

## Step 2



- Remove the right side panel by pulling off the large silver piece.

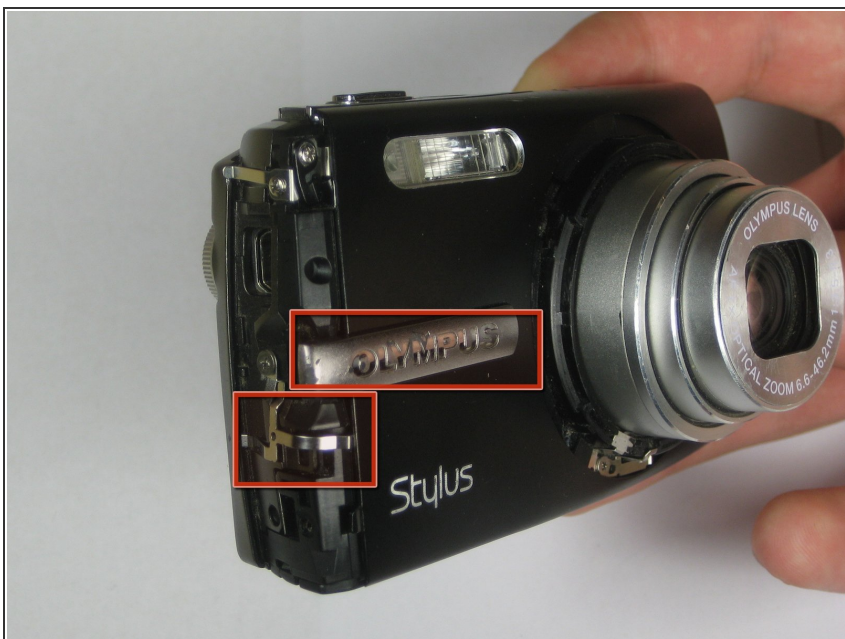


### Step 3



- Remove the remaining three Phillips #00 side and front panel screws.

### Step 4



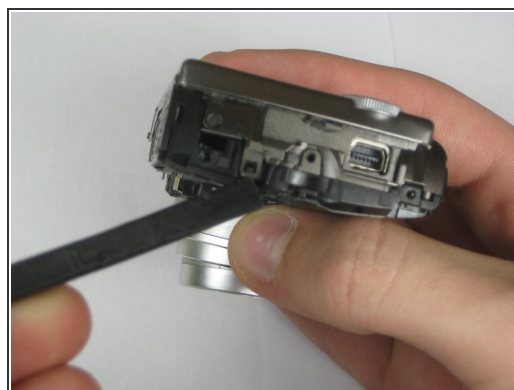
- Using your thumb and forefinger, pull off the silver name plate and silver "T-shape" piece.

## Step 5



- Remove the black front panel by sliding it towards the lens and then pulling it up off of the camera.

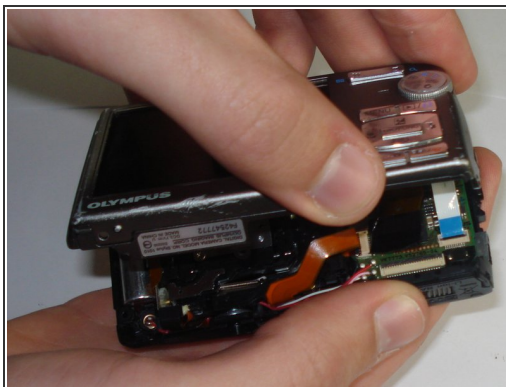
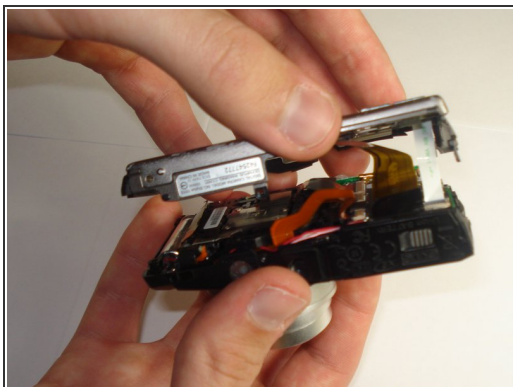
## Step 6



- Remove the three Phillips #00 screws from the front of the camera.
- Using a spudger, lift the two tabs to separate the case—one tab on top and one tab on the right side.

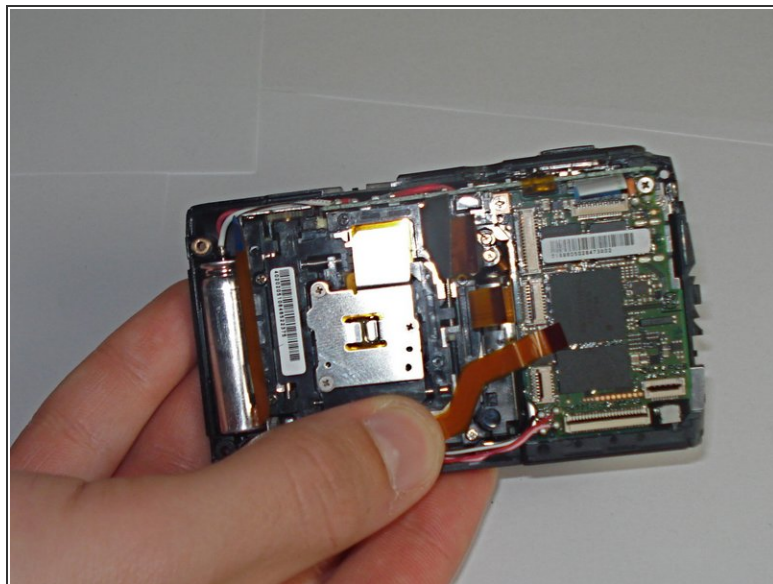


## Step 7



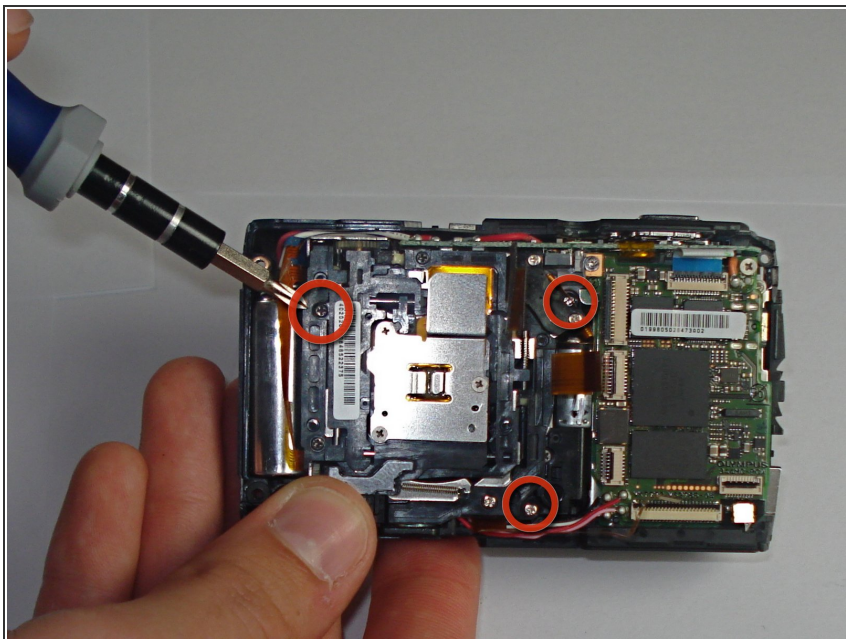
- Using a plastic spudger, lift up the black clips.
- Still using the plastic spudger, detach the gold connector strip and white connector strip.
- Using both hands, pull the camera apart into two pieces.

## Step 8 — Lens



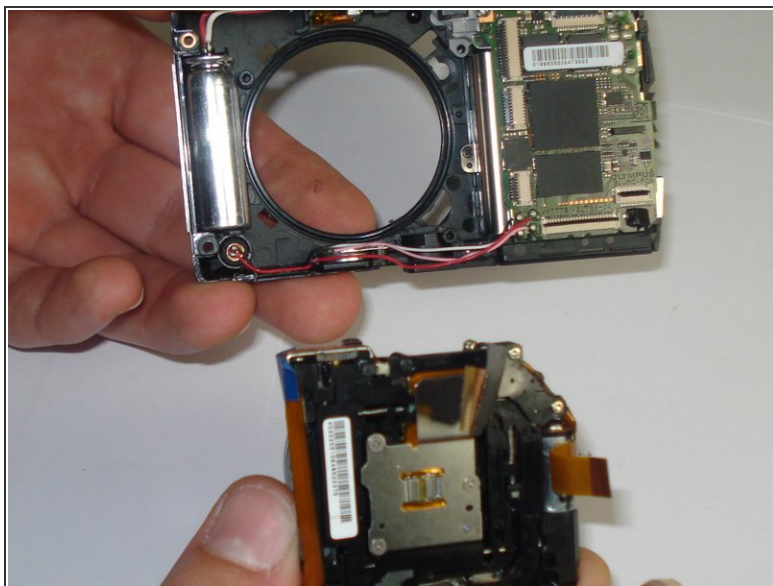
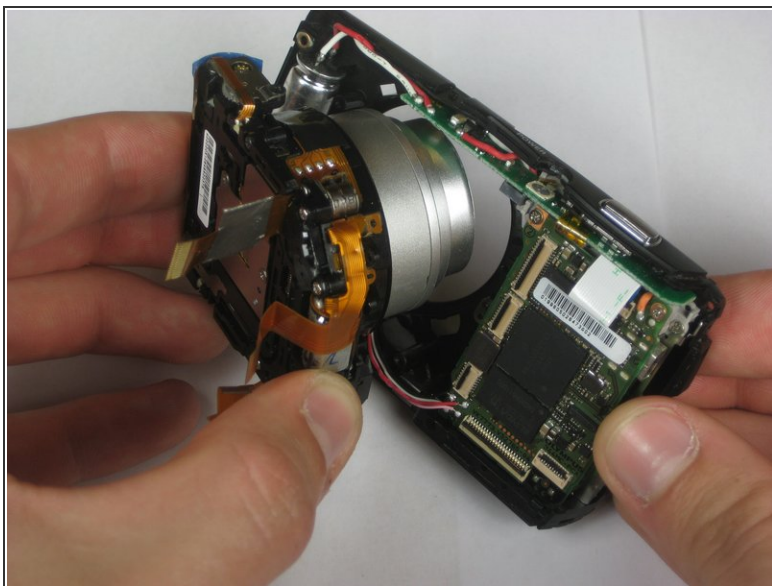
- Using a plastic spudger, lift up the black clips.
- Still using the spudger, detach the three gold wire tape connectors from the inside of the camera.

## Step 9



- Remove the three screws from the inside of the camera using a #00 screwdriver.

## Step 10



- Using your thumb and forefinger, pull the lens piece straight out from the body of the camera.

To reassemble your device, follow these instructions in reverse order.