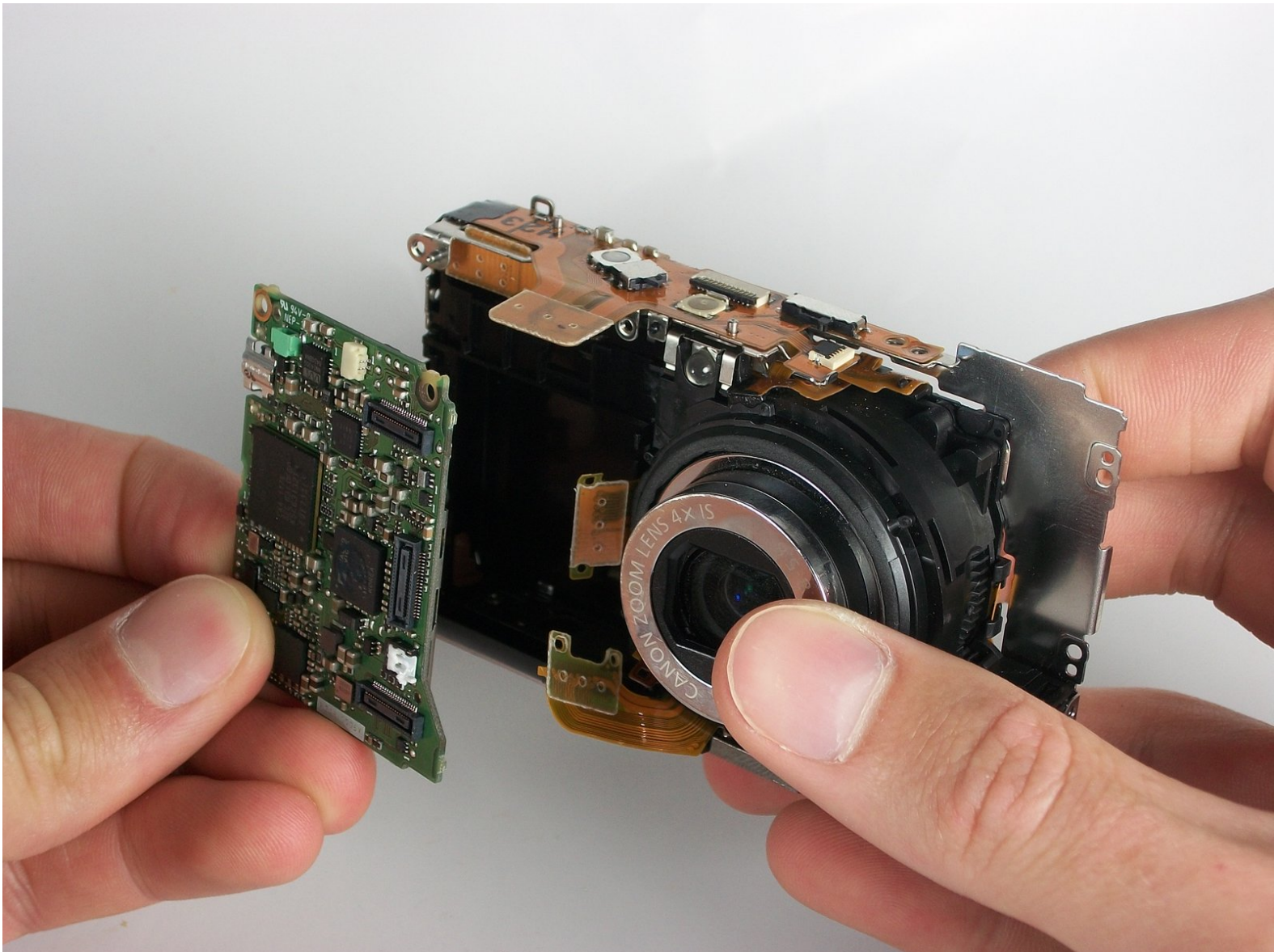




Disassembling Canon Powershot SD880 Logic Board

The logic board is the brains behind the camera...

Written By: Juan Miguel



INTRODUCTION

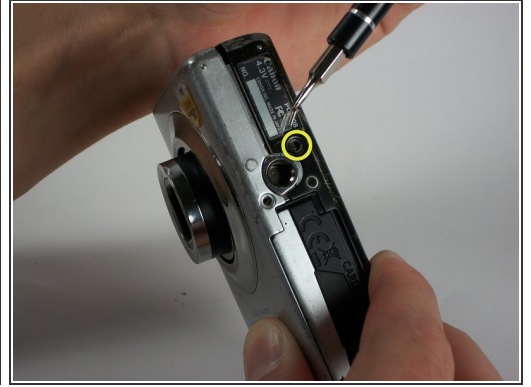
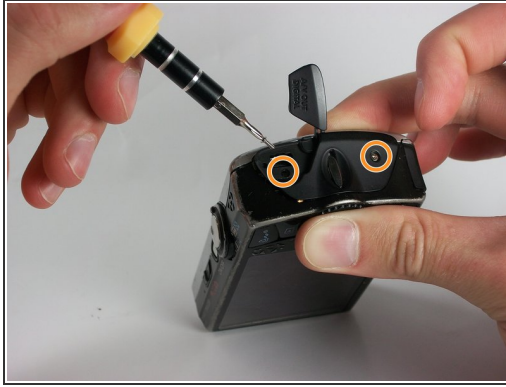
The logic board is the brains behind the camera and should be handled delicately.



TOOLS:

- [Phillips #0 Screwdriver](#) (1)
-

Step 1 — Back Cover



- Remove the two 2.4 mm screws on the side of the camera that are next to the LCD screen using a Phillips #00 screwdriver.
- Remove the two 4.1 mm screws on the other side using a Phillips #00 screwdriver.
 - ⓘ One screw will be located under the rubber USB flap.
- Remove the single 2.6 mm screw from the bottom of the camera using a Phillips #00 screwdriver.
- Slowly pull the back cover off of the camera.

Step 2 — Front Cover



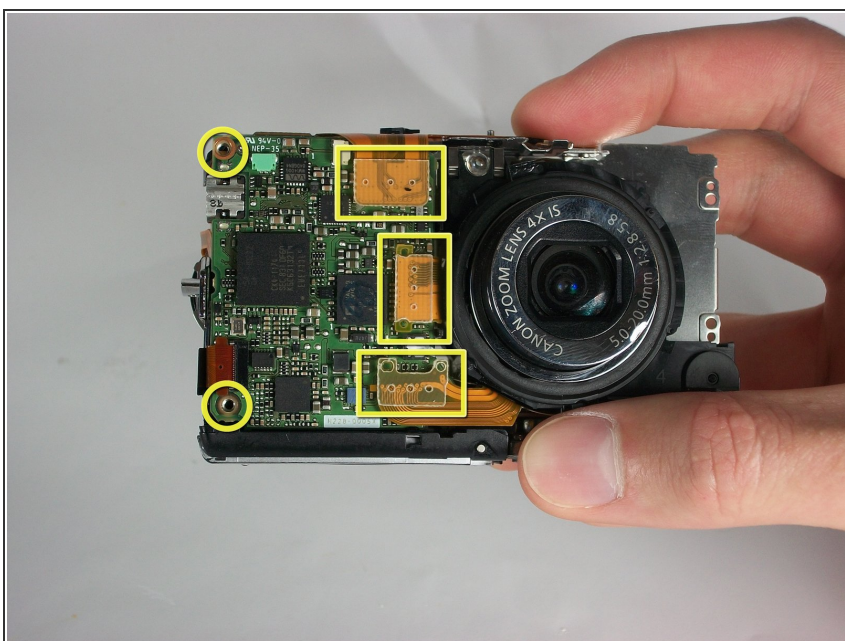
- Remove the 2.6 mm screw from the bottom of the camera using a Phillips #00 screwdriver.
 - Remove the 4.1 mm screw from the menu button side of the camera using a Phillips #00 screwdriver.
- i** The two screws on the other side of the camera were already removed when the back cover was taken off.

Step 3 — Top Panel



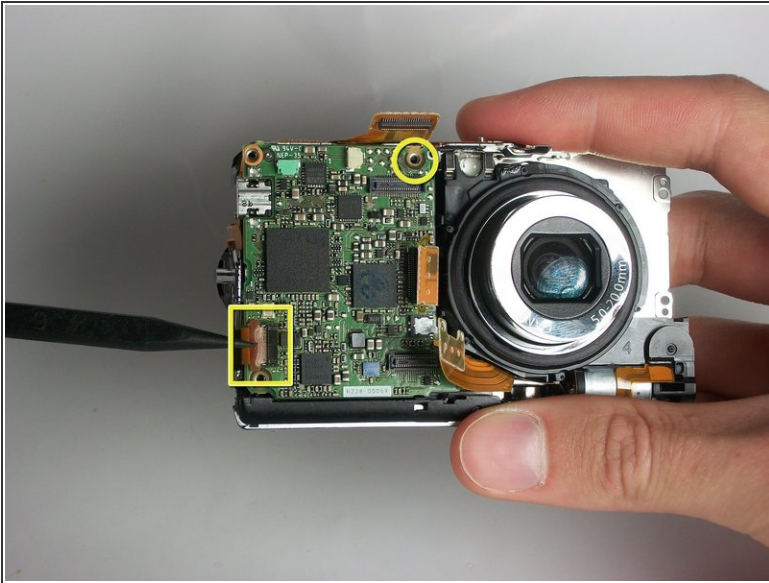
- Unplug the green and white plugs that connect the top panel to the top of the logic board.
- Dislodge the tab above the lens.
- Dislodge the tab at the back.

Step 4 — Logic Board



- Remove 2 screws(1.75mm) using a screwdriver.
- Detach 3 ribbons by pulling up on them. All are on the front of the camera.

Step 5



- Remove the newly exposed screw(1.75mm) with screwdriver.
- Unhinge the black tab to slide out the ribbon.
- The only thing keeping logic board in place is a black nub. Lift the logic board from that corner with increasing force until it pops out.

To reassemble your device, follow these instructions in reverse order.