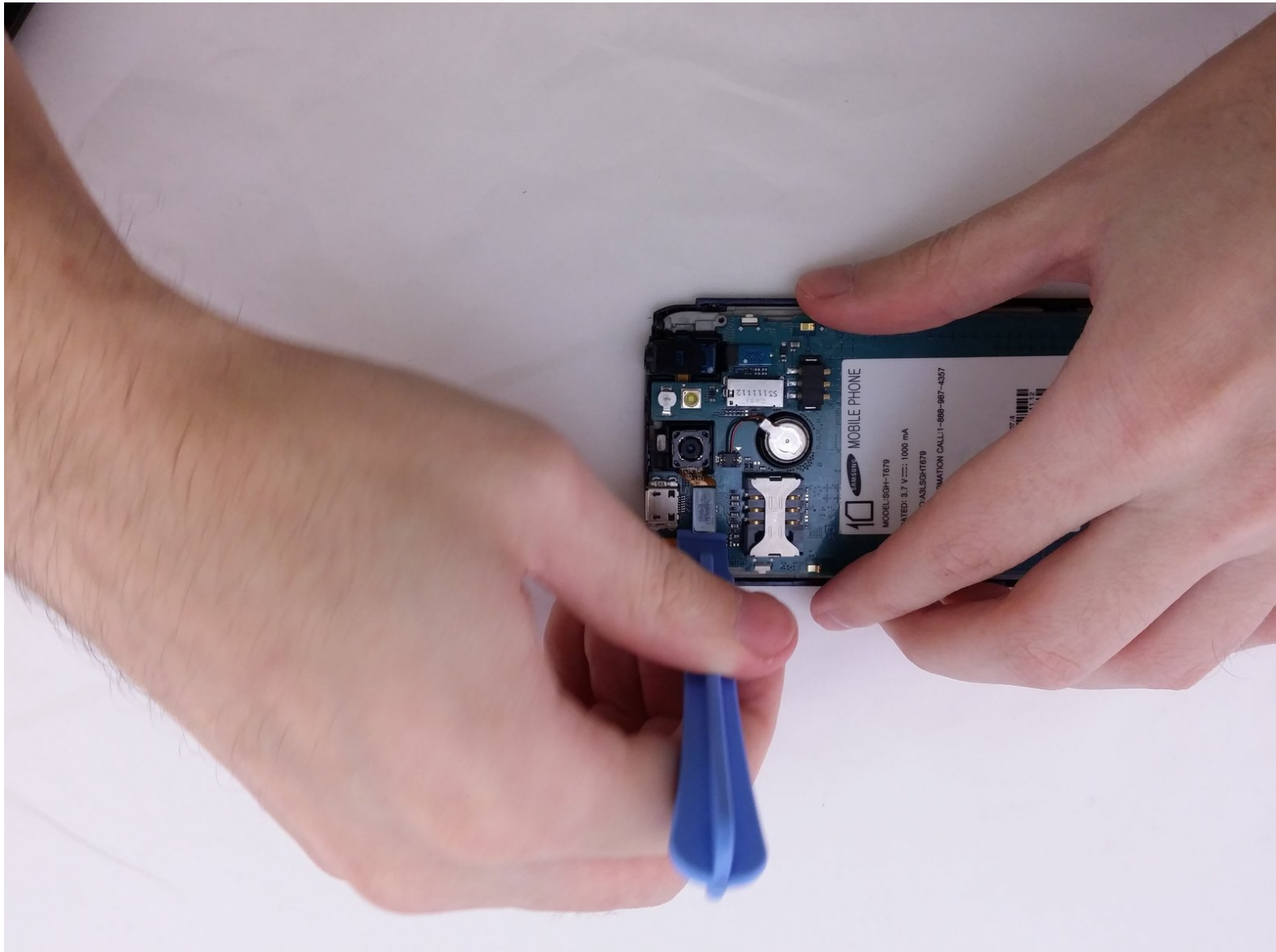




Samsung Exhibit II 4G Rear Facing Camera Replacement

Replace the Camera in your Samsung Exhibit II 4G.

Written By: David R



INTRODUCTION

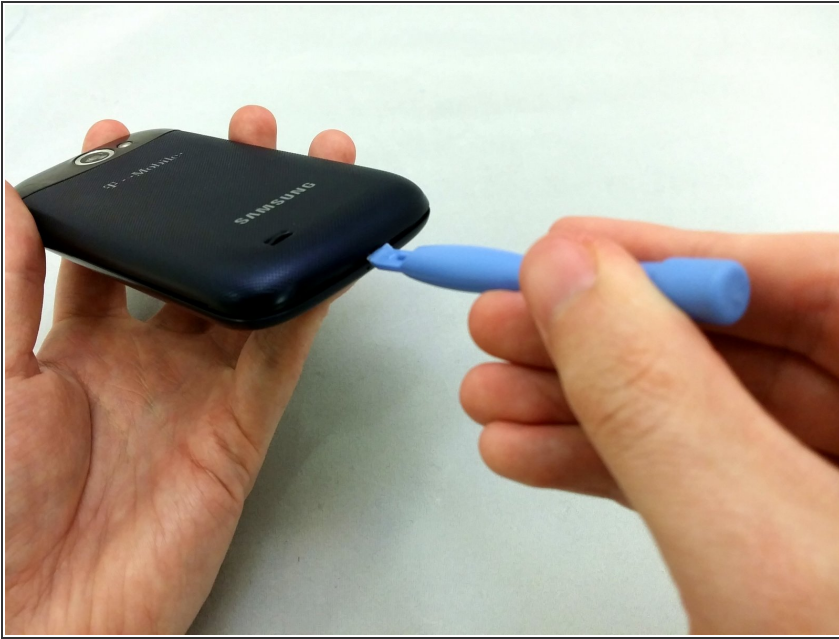
Use this guide to replace a defective Camera.



TOOLS:

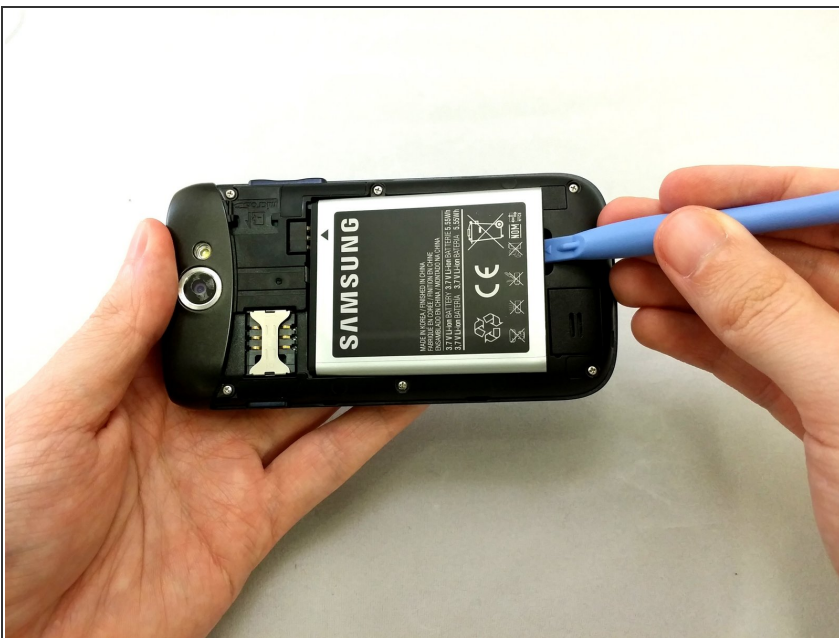
- [iFixit Opening Tools](#) (1)
 - [Phillips #000 Screwdriver](#) (1)
 - [Spudger](#) (1)
-

Step 1 — Battery



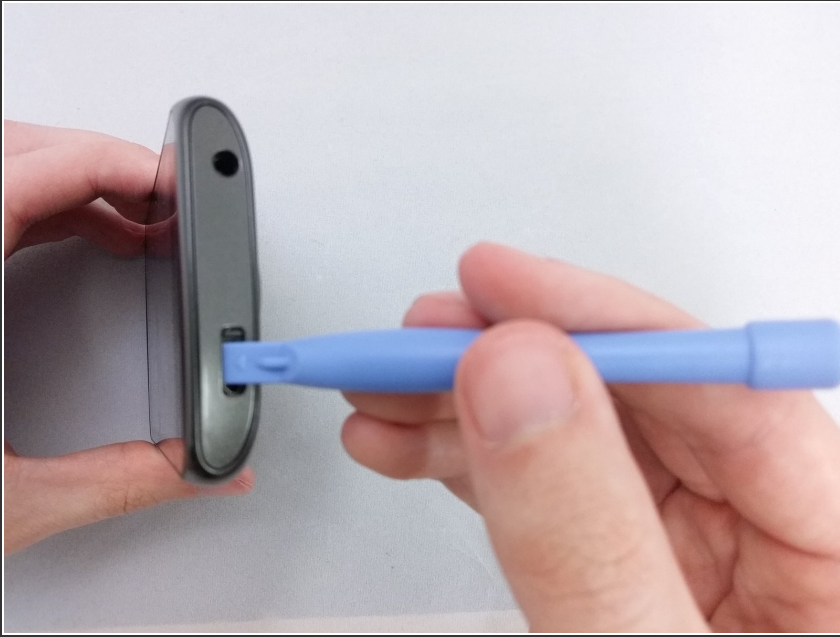
- Insert plastic opening tool under back cover.
- Apply pressure on tool while using a downward motion to pop off back cover.

Step 2



- Insert plastic opening tool under battery.
- Pry battery out.

Step 3 — Top Rear Housing Cover



- Insert plastic opening tool under back cover.
- Pry the top cover upward to remove it from the phone.

Step 4



- Remove the top cover.

Step 5



- Remove the four 3.8mm Phillips #000 screws securing the top cover to the back assembly.

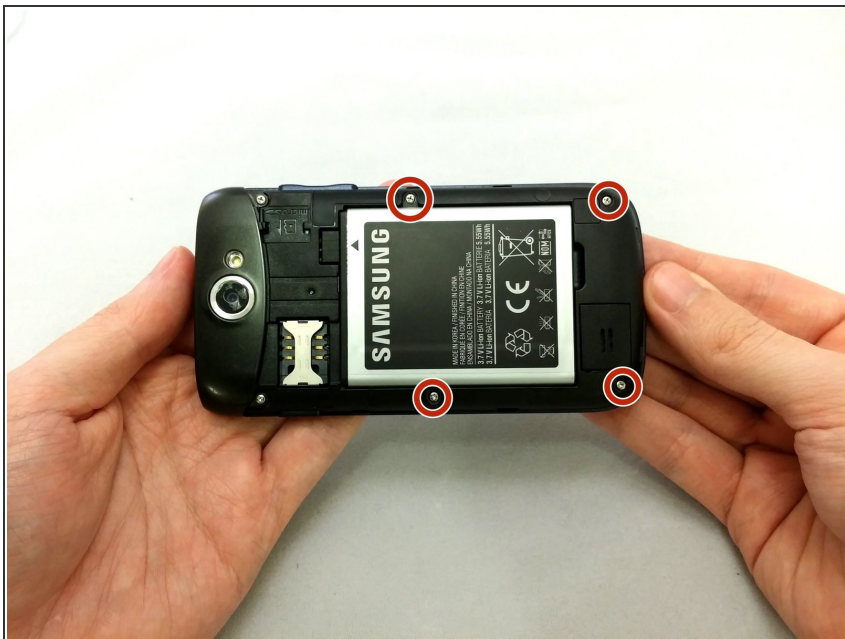
i Two screws from top and two screws from back.

Step 6



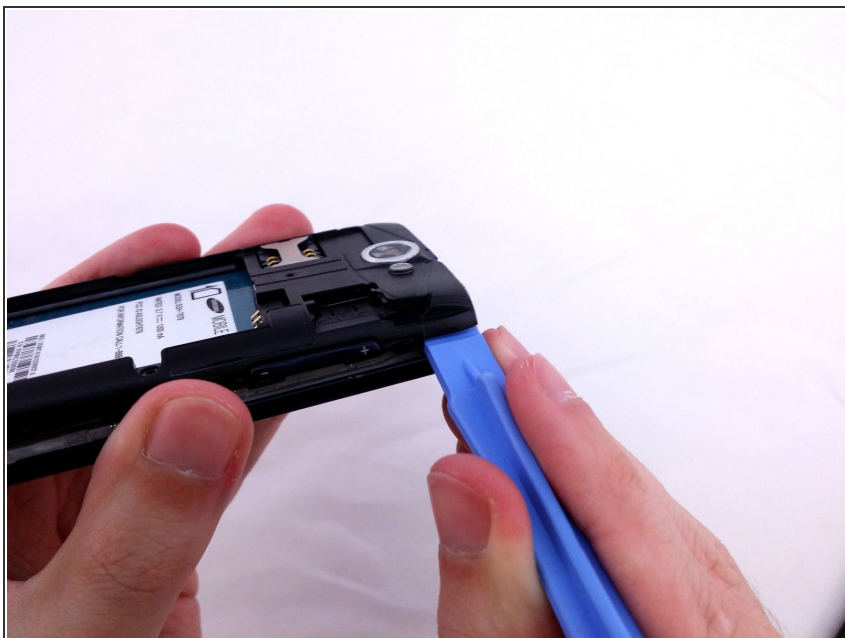
- Insert plastic opening tool under top cover.
- Using hand slide top cover away from phone.

Step 7 — Midframe



- Remove the four 3.8mm Phillips #000 screws securing the back assembly to the phone.

Step 8



- Insert plastic opening tool between back assembly and phone.
- Pry the back assembly away from phone.

Step 9



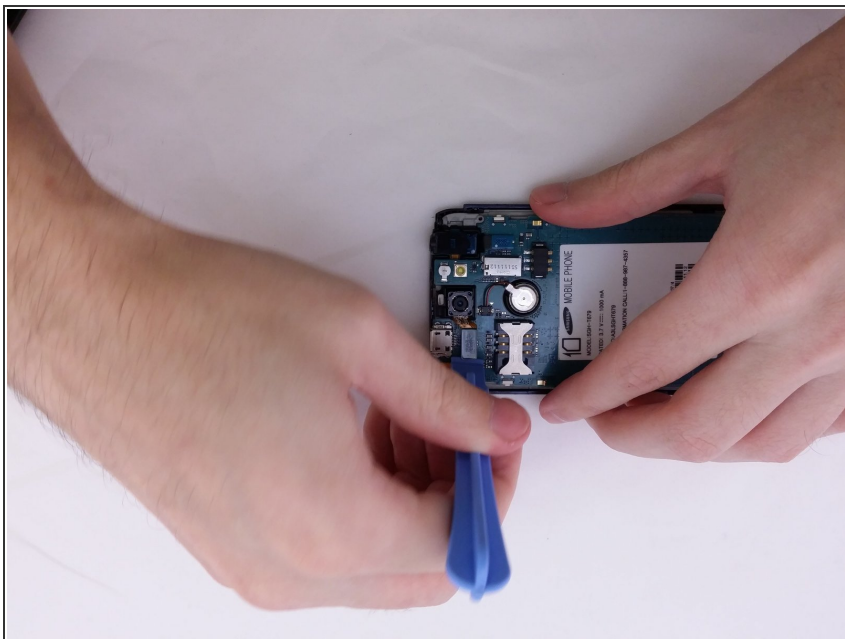
- With plastic opening tool continue prying around the edge of the back assembly.

Step 10



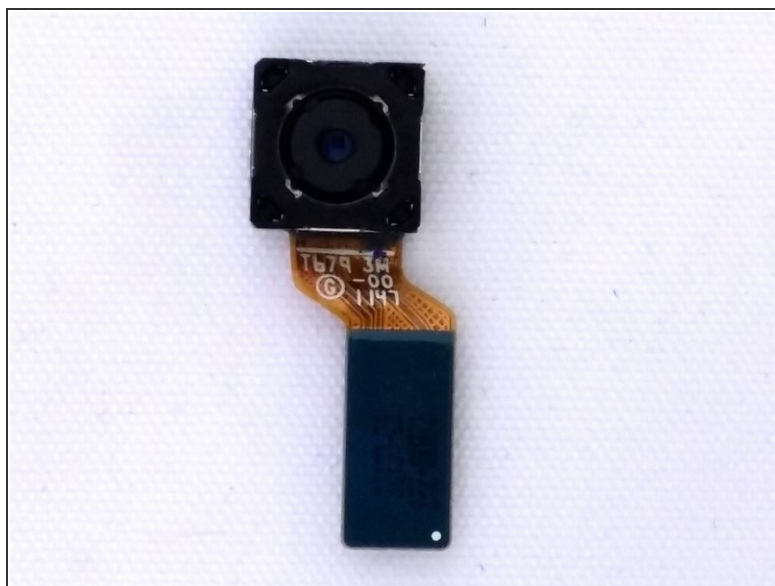
- Pull back panel assembly away from main body.

Step 11 — Rear Facing Camera



- Use the flat end of a spudger to disconnect the camera assembly cable.

Step 12



- Remove camera from square housing.

To reassemble your device, follow these instructions in reverse order.